

301-303 MAIN STREET
1989 Loma Prieta Earthquake Damage Survey
301-303 Main Street
Watsonville
Santa Cruz County
California

HABS CA-2816
CA-2816

11/25
CA 2816

WRITTEN HISTORICAL AND DESCRIPTIVE DATA

FIELD RECORDS

HISTORIC AMERICAN BUILDINGS SURVEY
National Park Service
U.S. Department of the Interior
1849 C Street NW
Washington, DC 20240-0001

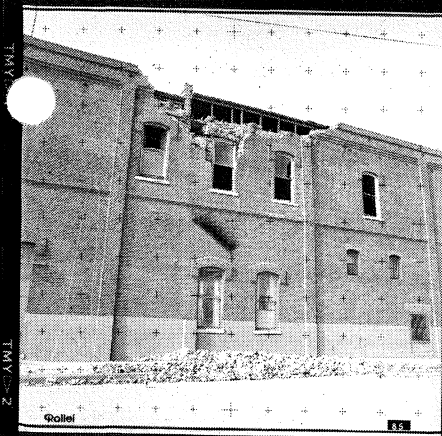
HISTORIC AMERICAN BUILDINGS SURVEY

301-303 MAIN STREET

HABS No. CA-2816

HABS
CA-2816
(page 1)

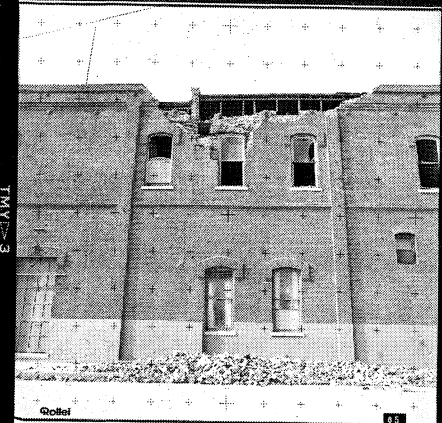
In October and November of 1989, the National Park Service, Historic American Buildings Survey, completed a photographic survey of the 1989 Loma Prieta earthquake damage of the San Francisco Bay Area. The photographs and negatives from that project have been deposited in the field notes for this survey.



TMY 2

TMY 2

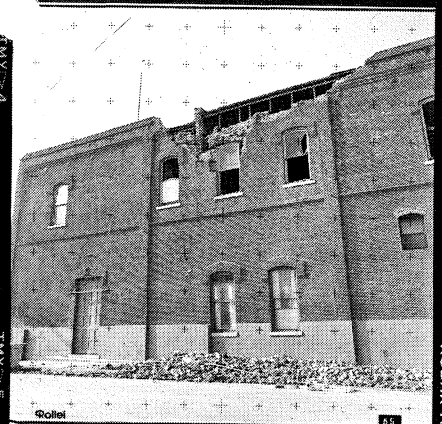
KODAK TMY 6053



TMY 3

TMY 3

KODAK TMY 6053



TMY 4

TMY 5

KODAK TMY 6053



TMY 6

TMY 6

KODAK TMY 6053



TMY 7

TMY 8

KODAK TMY 6053



TMY 9

TMY 10

KODAK TMY 6053



TMY 11

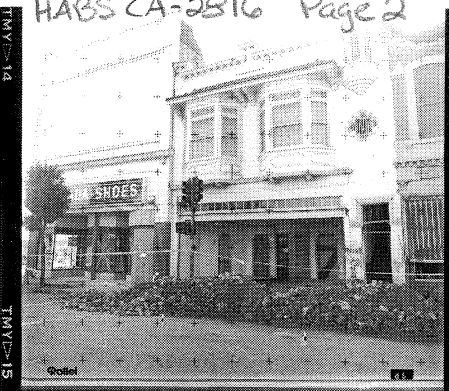
TMY 12

KODAK TMY 6053



TMY 13

KODAK TMY 6053



TMY 14



TMY 15

KODAK TMY 6053



TMY 17

KODAK TMY 6053



TMY 18

KODAK TMY 6053



TMY 19

KODAK TMY 6053