

F 574

.G7 G77





GRAND RAPIDS

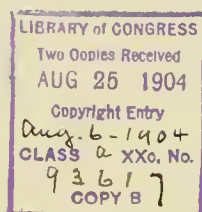
MICHIGAN



The
Furniture
City

The biggest
city of its size in
this country
—Blaine

PRICE FIFTY CENTS



Copyright, 1904.

BY


DEAN-HICKS PRINTING COMPANY,
Grand Rapids, Mich.

1
2
3
4
5
6
7
8
9
10

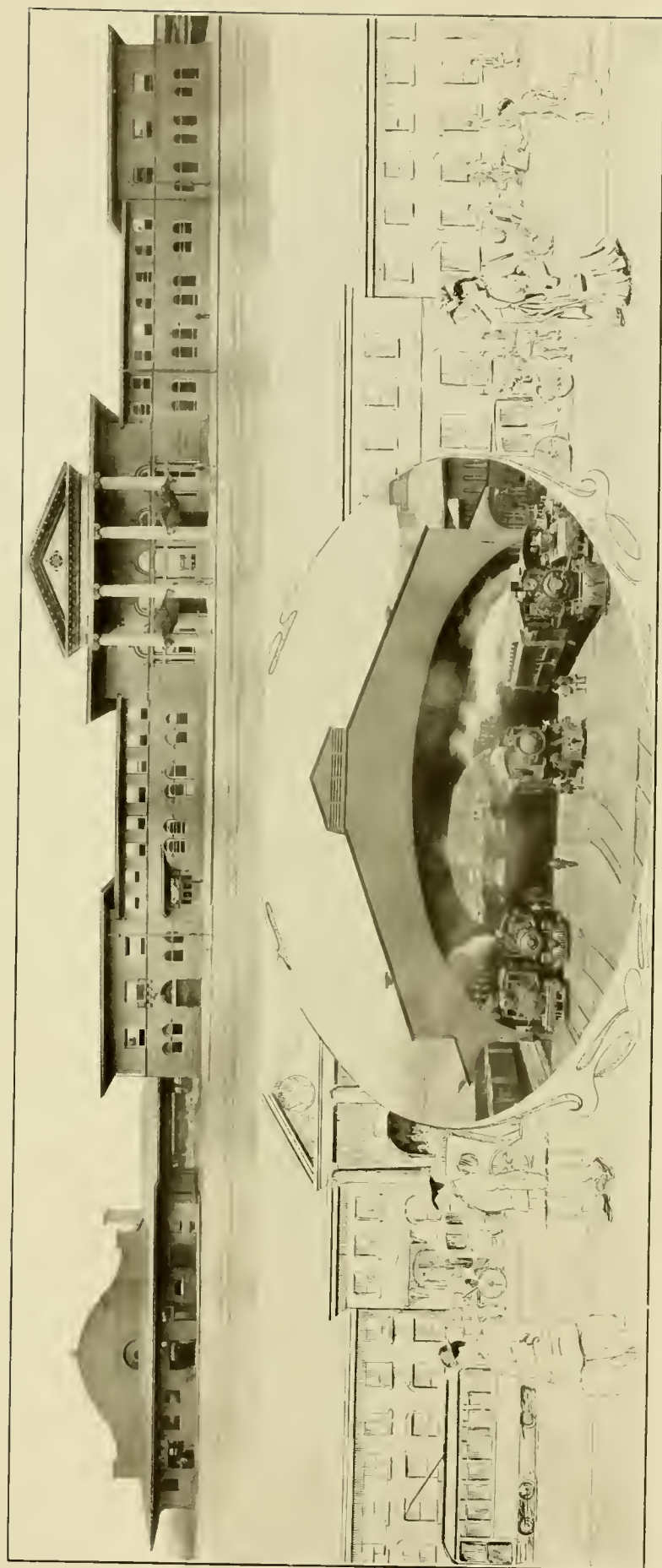


PREFATORY

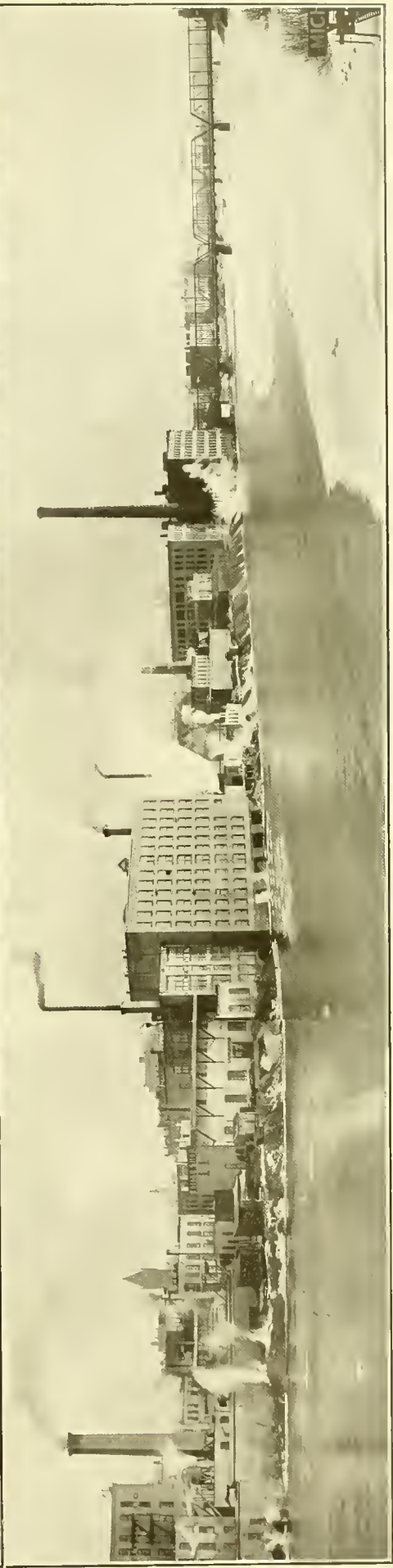
24

 HERE are few, if any, homes of comfort and culture in this country that do not include among their most cherished possessions some, at least, of the product that has made Grand Rapids famous throughout the length and breadth of the land as the Furniture City. These "counterfeit presentments" of the beautiful and interesting features of the city itself show the environments attending the bringing out of the most artistic and finest creations of the home.

All of the views were especially photographed for this souvenir work, and the aim has been to give a comprehensive idea, through the media of the camera and the printer's art, of Grand Rapids, the Furniture City.

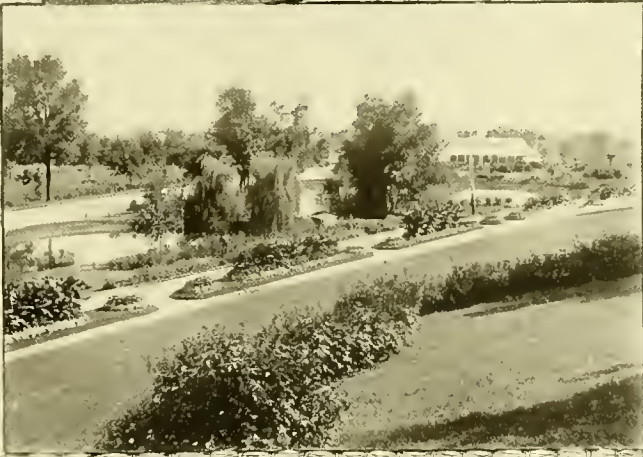


Union Station and Train Shed.





Fulton Street Park.



John Ball Park.



John Ball Park.



John Ball Park.



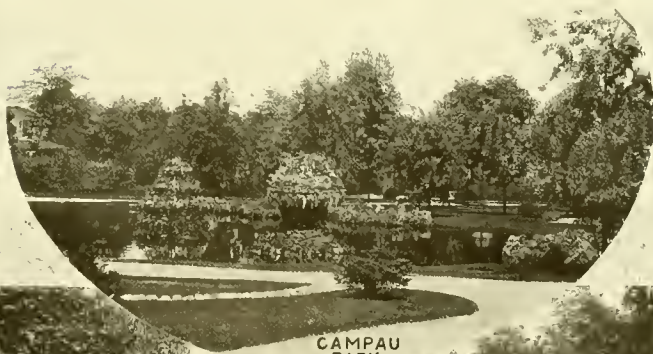
John Ball Park.



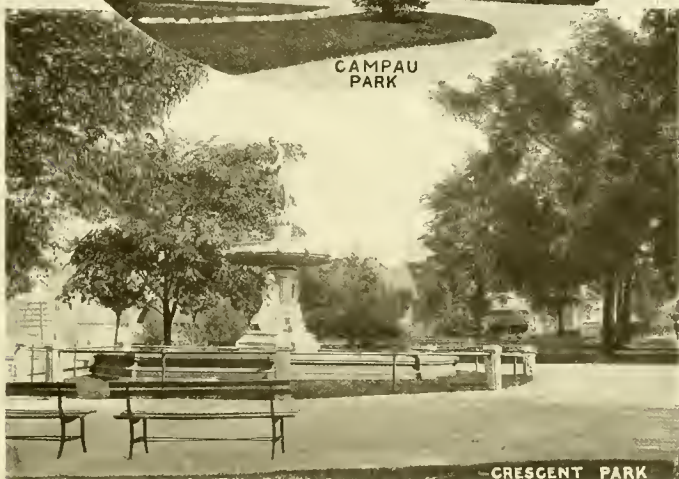
PICNIC GROUNDS
NORTH PARK



PAVILION
NORTH PARK



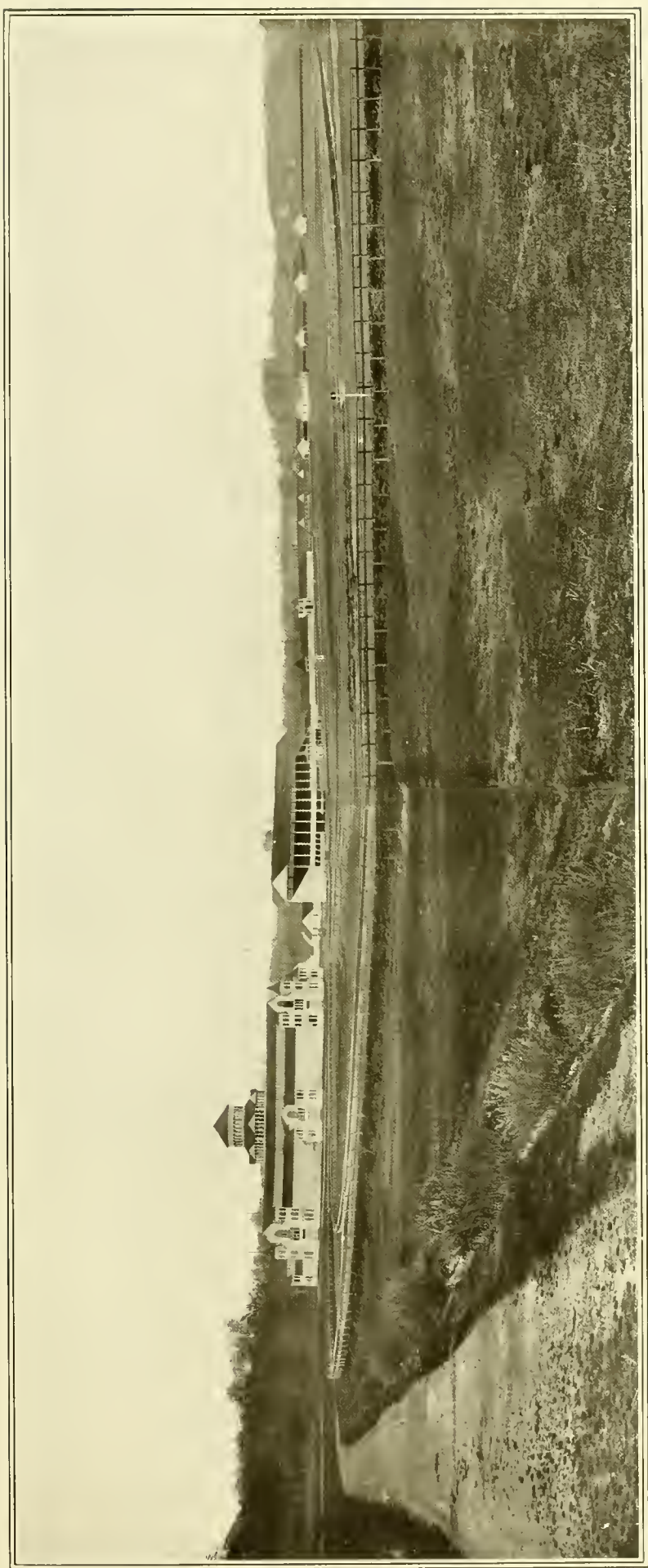
CAMPAU
PARK



CRESCENT PARK



The Boulevard Down the River.



Comstock Park, Fair Grounds.



Washington and State Streets.



BOSTWICK ST.



JEFFERSON AVE.



COLLEGE AVE.



SHELDON



Residences.



Residences.



PEARL ST.



CANAL ST



E. BRIDGE ST



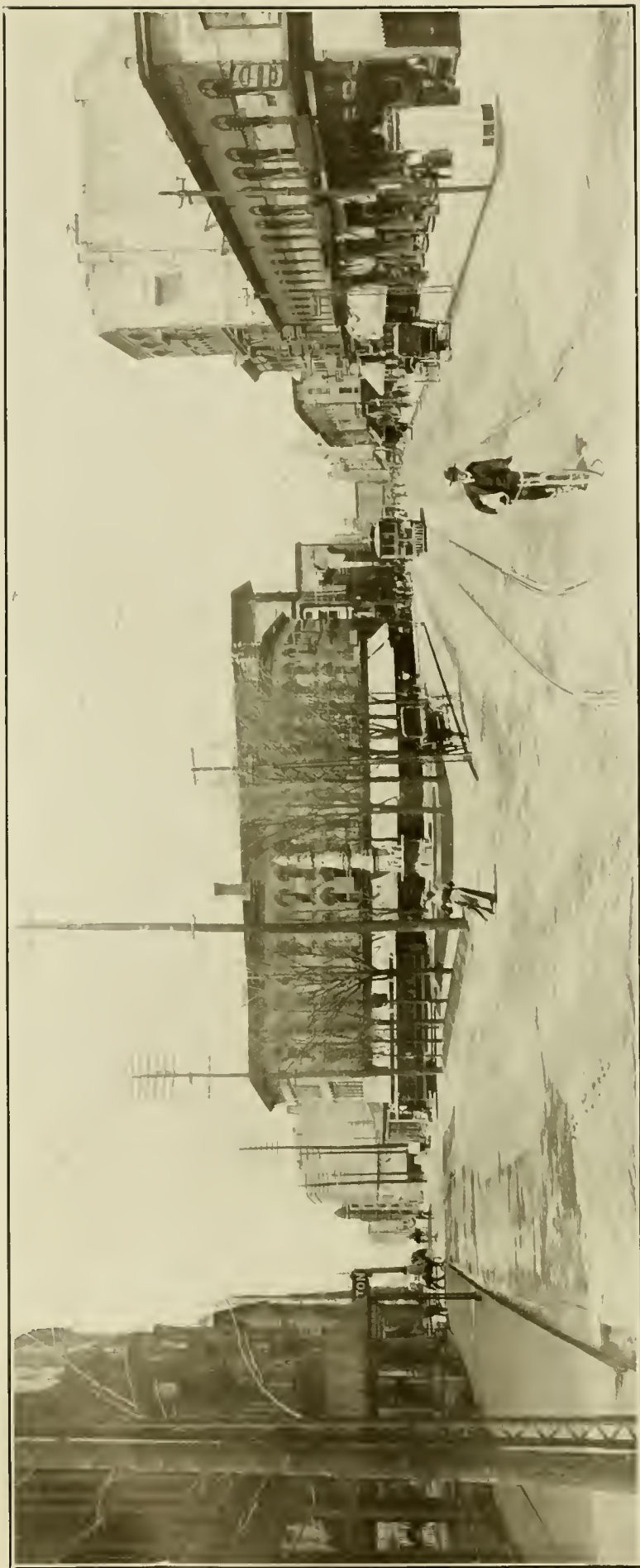
S. DIVISION ST.



S. IONIA ST.



OTTAWA ST.



Monument Park, Monroe and Fulton Streets.





CLARK BUILDING

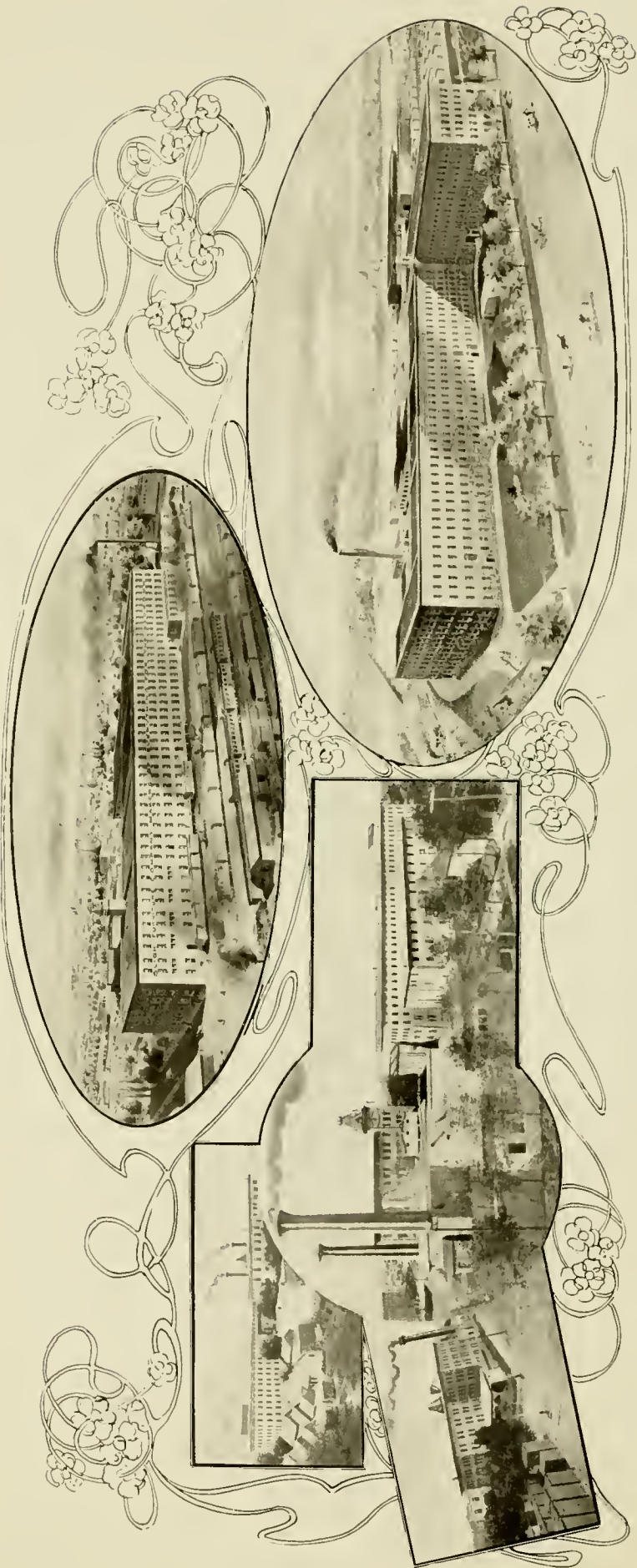


BLODGETT BUILDING

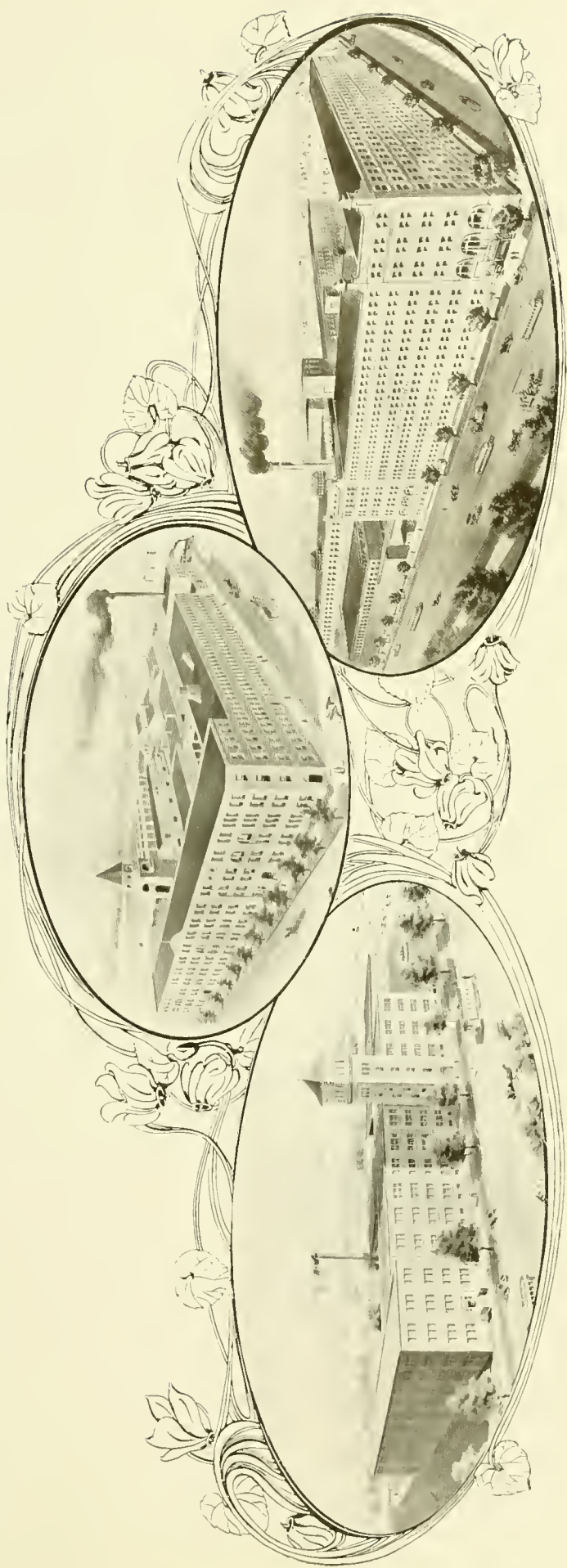


RYDMAN BUILDING





Furniture Factories.



Furniture Factories.



CITY HALL

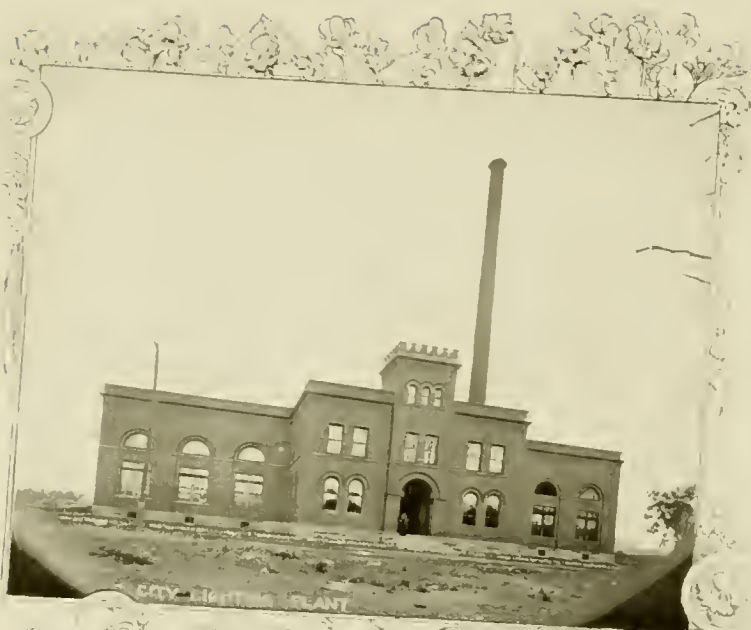


COUNTY BUILDING



FEDERAL BUILDING





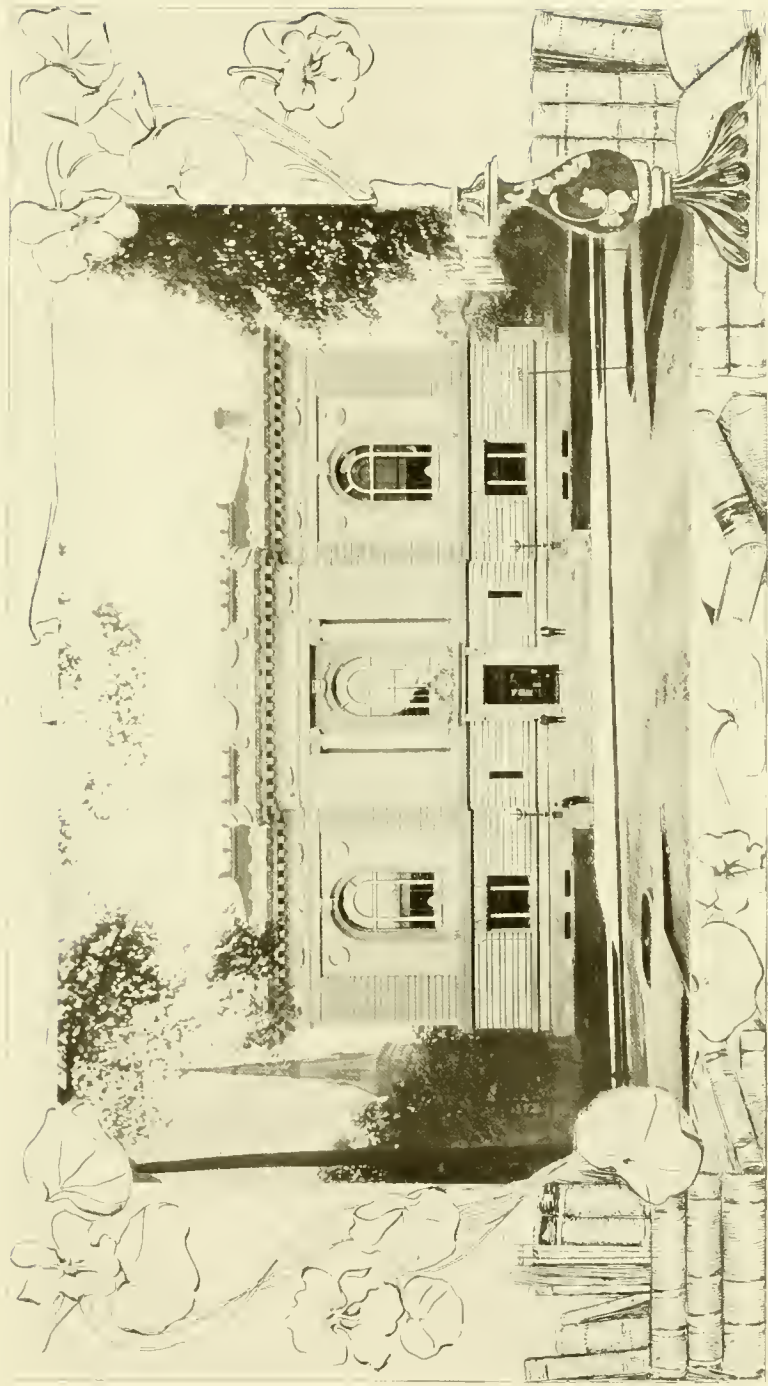
CITY LIGHTING PLANT



CITY MARKET



CITY PUMPING STATION



Iverson Public Library.



Ryerson Public Library.



Ryerson Public Library



CENTRAL HIGH SCHOOL



K.S.I. MUSEUM



A WARD SCHOOL



UNION HIGH SCHOOL



PENTECOSTAL CHURCH



LADIES LITERARY CLUB



Y.M.C.A. BUILDING



ST. CECILIA



ST. MARKS



ST. ANDREW'S



COMMERCE ST. CHURCH



FOUNTAIN ST. BAPTIST



WESTMINSTER PRESBYTERIAN



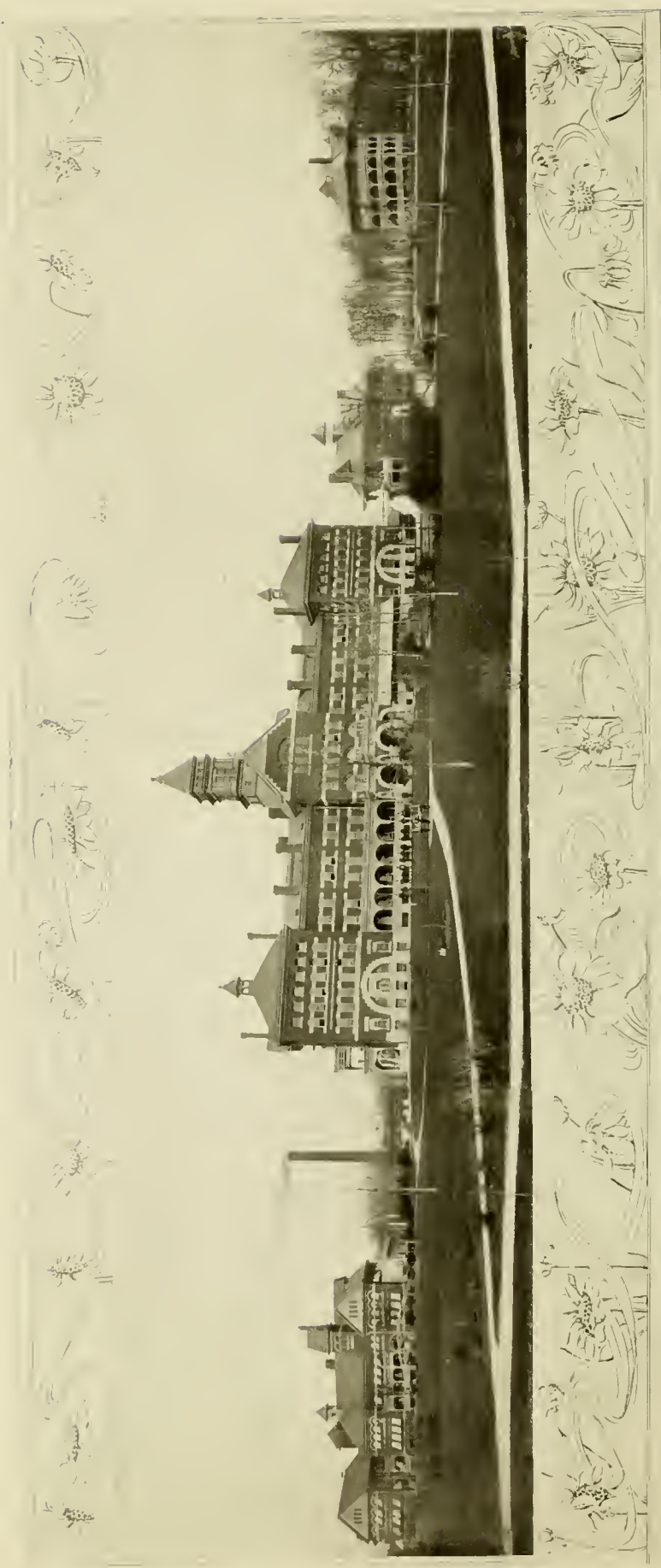
LAGRAVE ST. CHRISTIAN REFORMED



FIRST REFORM



ALL SOULS UNIVERSALIST



Michigan Soldiers' Home



ST. JOHN'S ORPHAN ASYLUM



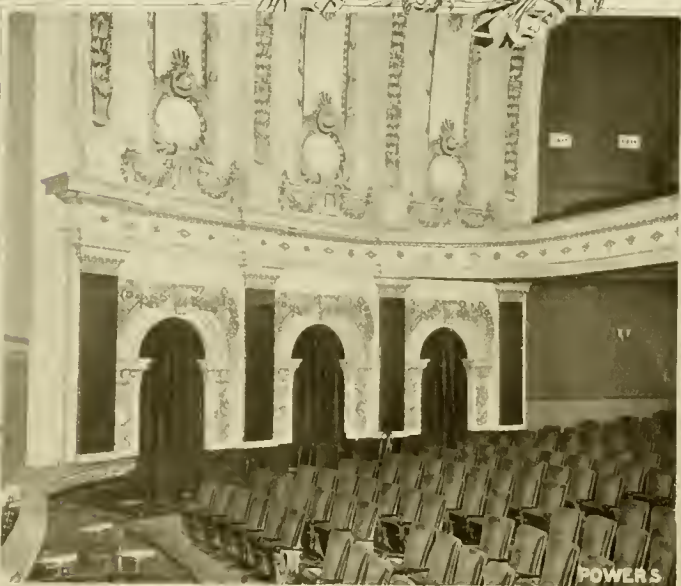
U.B.A. HOSPITAL



BUTTERWORTH HOSPITAL



MICHIGAN MASONIC HOME



Theatres.



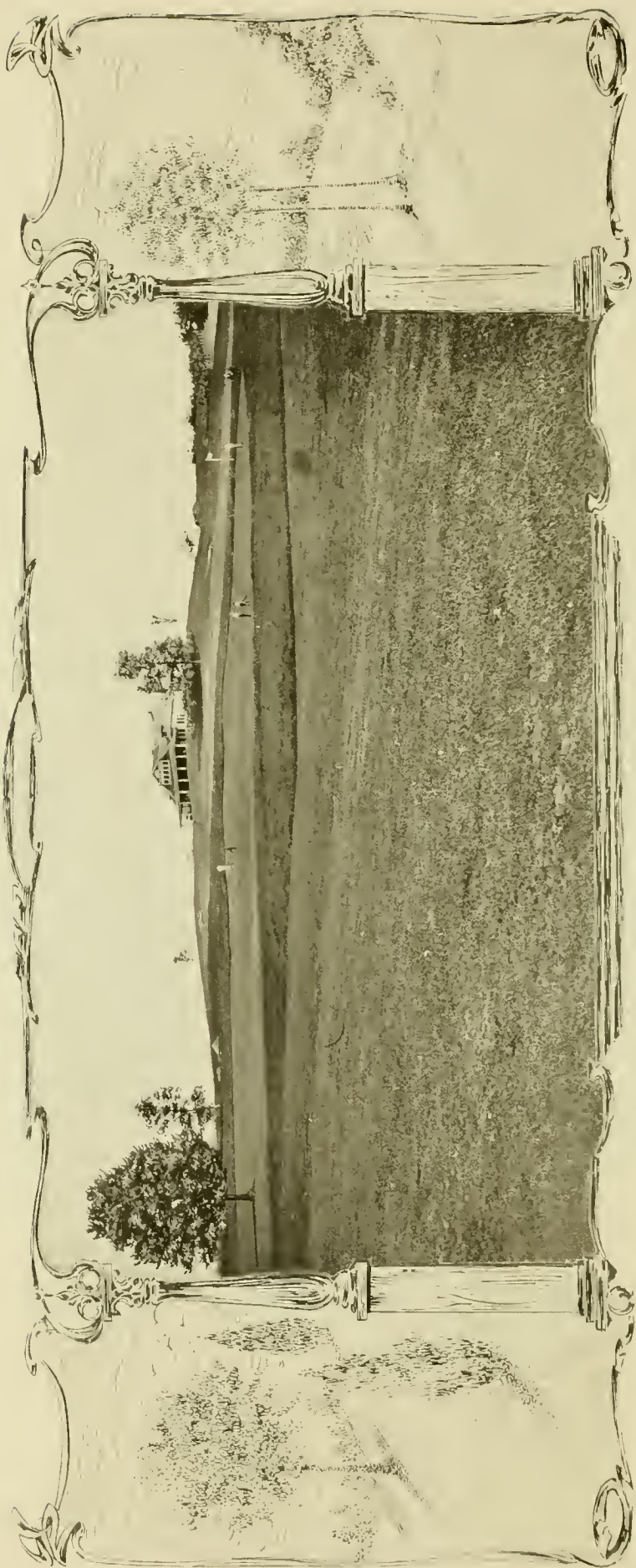
Lakeside Club.



Lake-side Club.



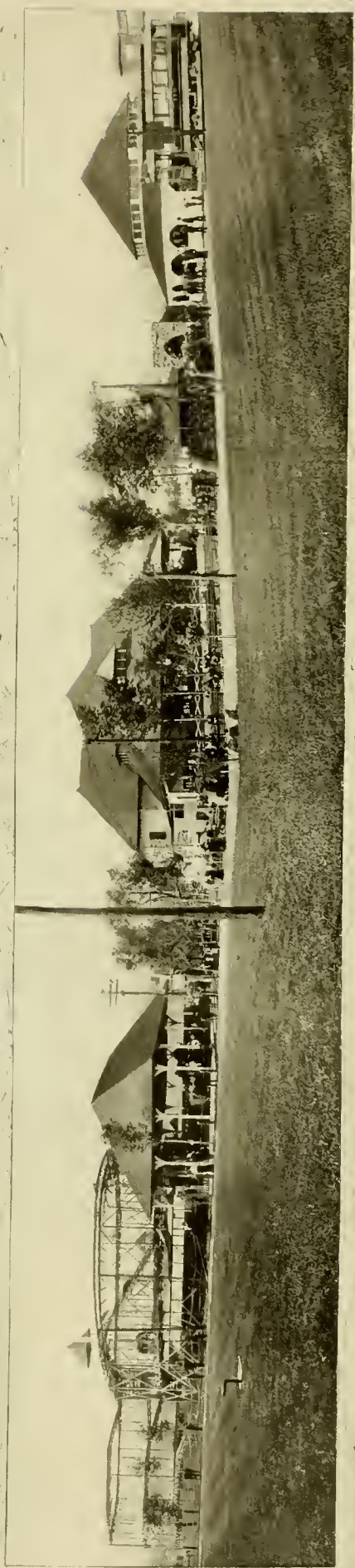
Lakeside Club.



Golf Links, Kent Country Club.



Kent Country Club.



At Reed's Lake.



At Reed's Lake.



LIVINGSTON HOTEL



HOTEL PANTLIND

GRAND RAPIDS IN A NUTSHELL

Population, city and suburbs.....	104,000
Area of city in square miles.....	17.50
Area of city parks in acres.....	120
Number of railroads entering city.....	16
Miles of street railway—electric.....	50
Interurban electric railroads.....	2
Miles of improved streets.....	287
Miles of asphalt streets.....	6½3
Miles of water mains laid.....	149
Number of fire hydrants.....	1,400
Gallons capacity of pumps per day.....	31,000,000
Average daily consumption, in gallons.....	13,338,000
Number of miles of public sewers.....	143
Number of street lights.....	545
Number of telephones used in city.....	8,150
Number of public and private hospitals.....	10
Newspapers	3 daily, 27 weekly
Public works, value.....	1,949,074.98
Schools	Public 30, private 20
Pupils	16,000
Clearing house business, 1903.....	\$97,704,458
Factories.....	532
Number of hands employed in factories.....	20,471
Daily pay roll.....	\$ 43,957.34
Capital invested	\$23,433,790
Products	\$41,824,042
Value of fruit marketed for season of 1903.....	\$ 2,052,350
Churches	84
Public library, volumes	62,234
Volumes in Law Library.....	7,227
Assessed valuation of Real Estate.....	\$72,377,811
Public buildings	41
Number of residences.....	10,873
Banks	10
Total capital	\$ 3,050,000
Trust companies, 1; capital.....	\$ 200,000
Death rate average per 1,000.....	11
Number of trains in and out of the Union Depot, year 1903	20,017
Tickets sold at the Union Station	301,620
Number of street railway passengers carried.....	15,141,898
Jobbing and Wholesale firms, 124; sales	\$21,000,000



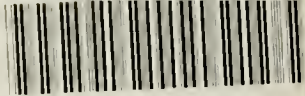
SINGLE COPIES OF THIS
SOUVENIR WILL BE
FORWARDED POST-PAID
TO ANY ADDRESS
UPON RECEIPT OF
PRICE—FIFTY CENTS
DEAN-HICKS PRINT-
ING COMPANY, GRAND
RAPIDS, MICHIGAN



PHOTOGRAPH PRINTS
OF THE VIEWS SHOWN
IN THIS BOOK CAN
BE SUPPLIED BY THE
ROYAL PHOTO COMPANY
GRAND RAPIDS, MICH.

5
H 16974 580





0 016 099 506 3