

GV

1177

S84









PRACTICAL POINTERS

FOR THOSE WHO SHOOT



**S**

TEVENS

RIFLES  
PISTOLS  
POCKET RIFLES



15  
9545



COMPLIMENTS OF  
THE J. STEVENS  
ARMS & TOOL CO.  
CHICOPEE FALLS MASS. U.S.A.





4-28-03

# PRACTICAL POINTERS

FOR THOSE WHO SHOOT

# STEVENS



RIFLES

PISTOLS

POCKET RIFLES



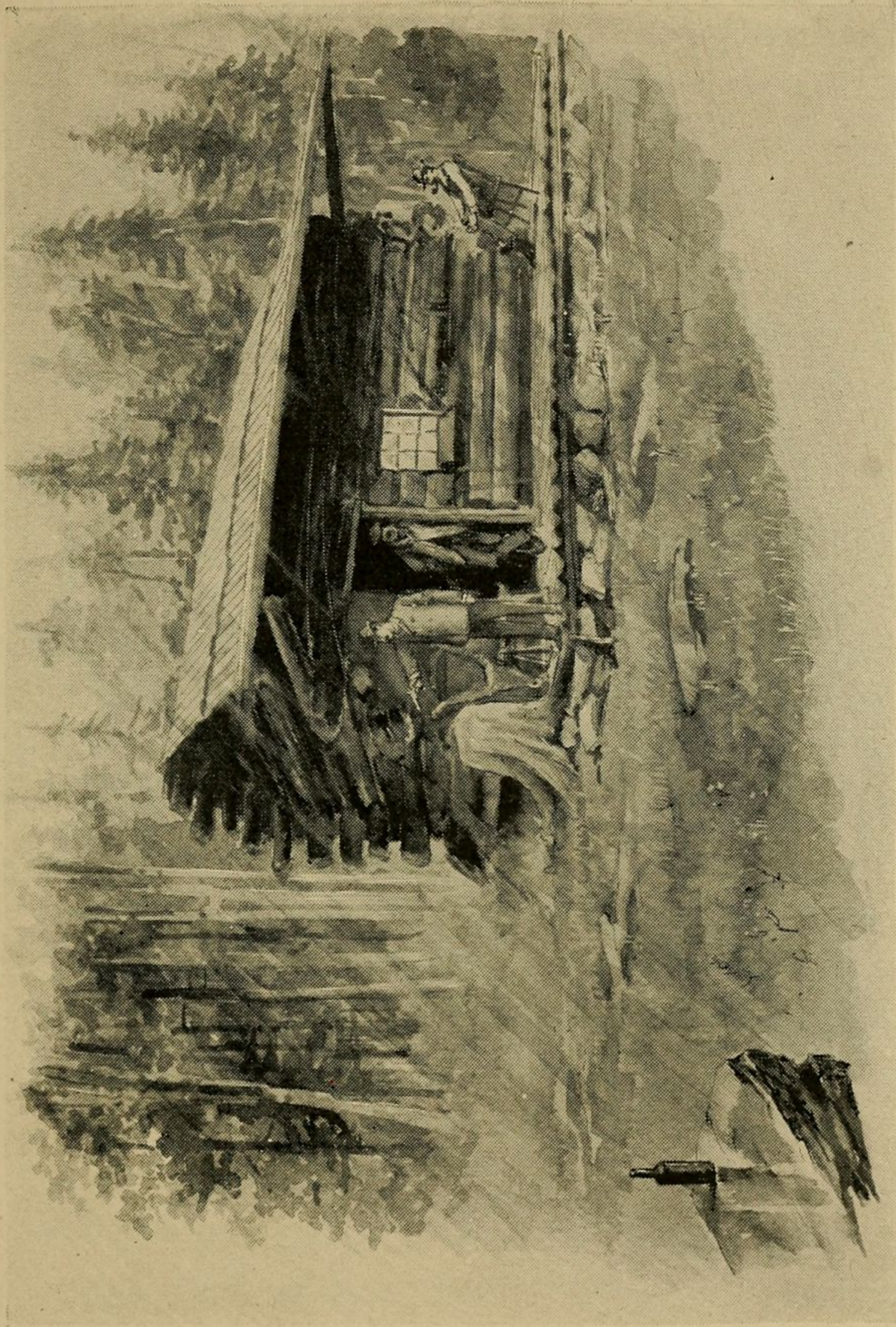
B<sup>2</sup>-1

27049

GV 1177  
.S 84

COPYRIGHTED BY  
THE J. STEVENS ARMS AND TOOL CO.

1896



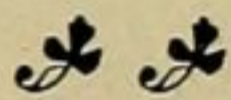
A RAINY DAY IN CAMP.

*Shooting a Stevens Pistol.*



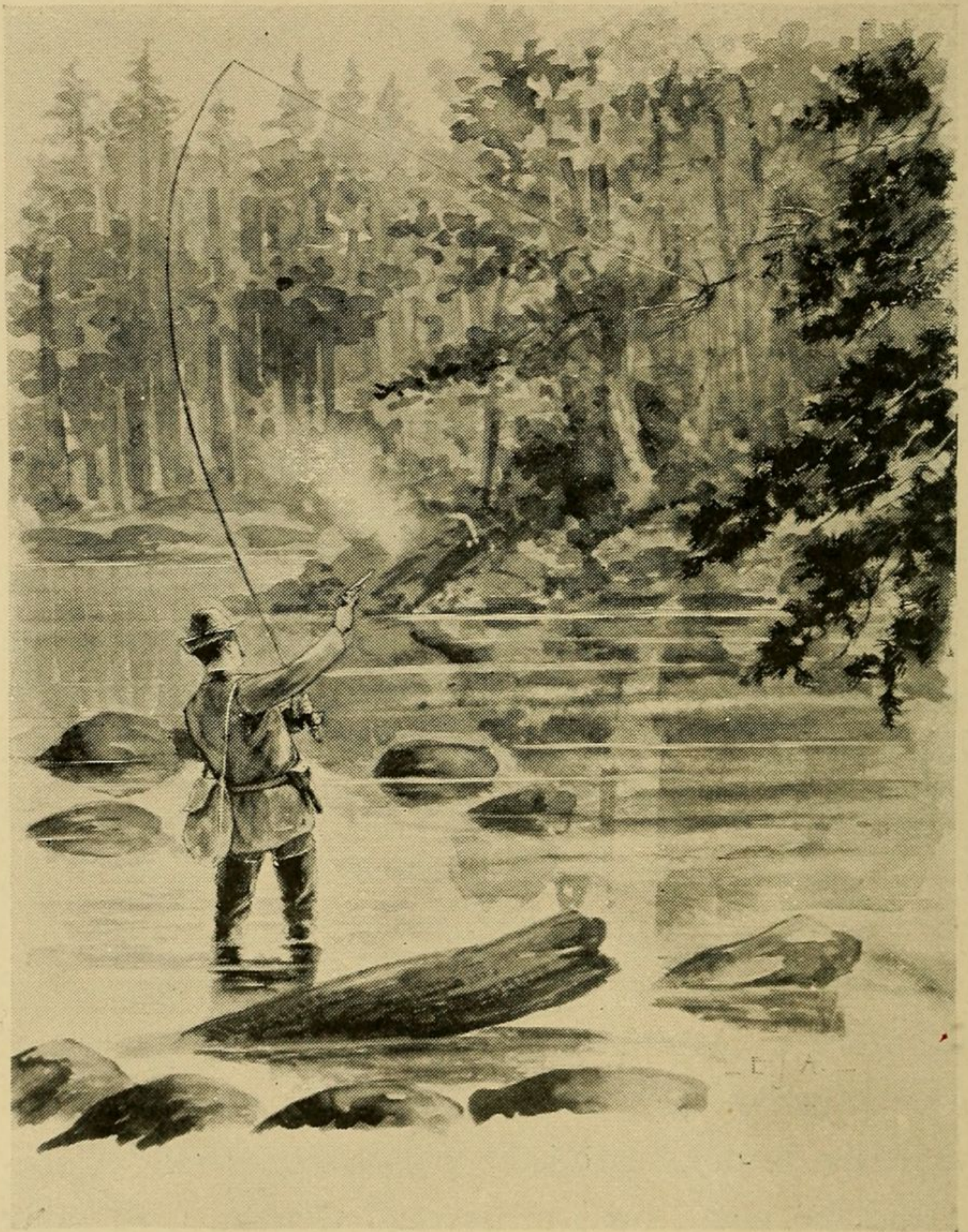
# RIFLES AND

# RIFLE SHOOTING



**R**IFLE SHOOTING has long been recognized as one of the cleanest sports, and a very important training. To be a good rifle shot is within the power of any one of nominal health and vision, and it is an accomplishment which many persons value. Nowhere else in the world can so fine a rifle be purchased for so little money as in America, and American rifles have always been known as arms of extreme accuracy and reliability.

No arms have recorded more brilliant scores or done more to establish the reputation of American marksmen than the Stevens rifles. These arms have repeatedly demonstrated the possibility in rifle shooting, and the small bore arms made by the J. Stevens Arms and Tool Co. have many times shown shooting which previously had been considered impossible.



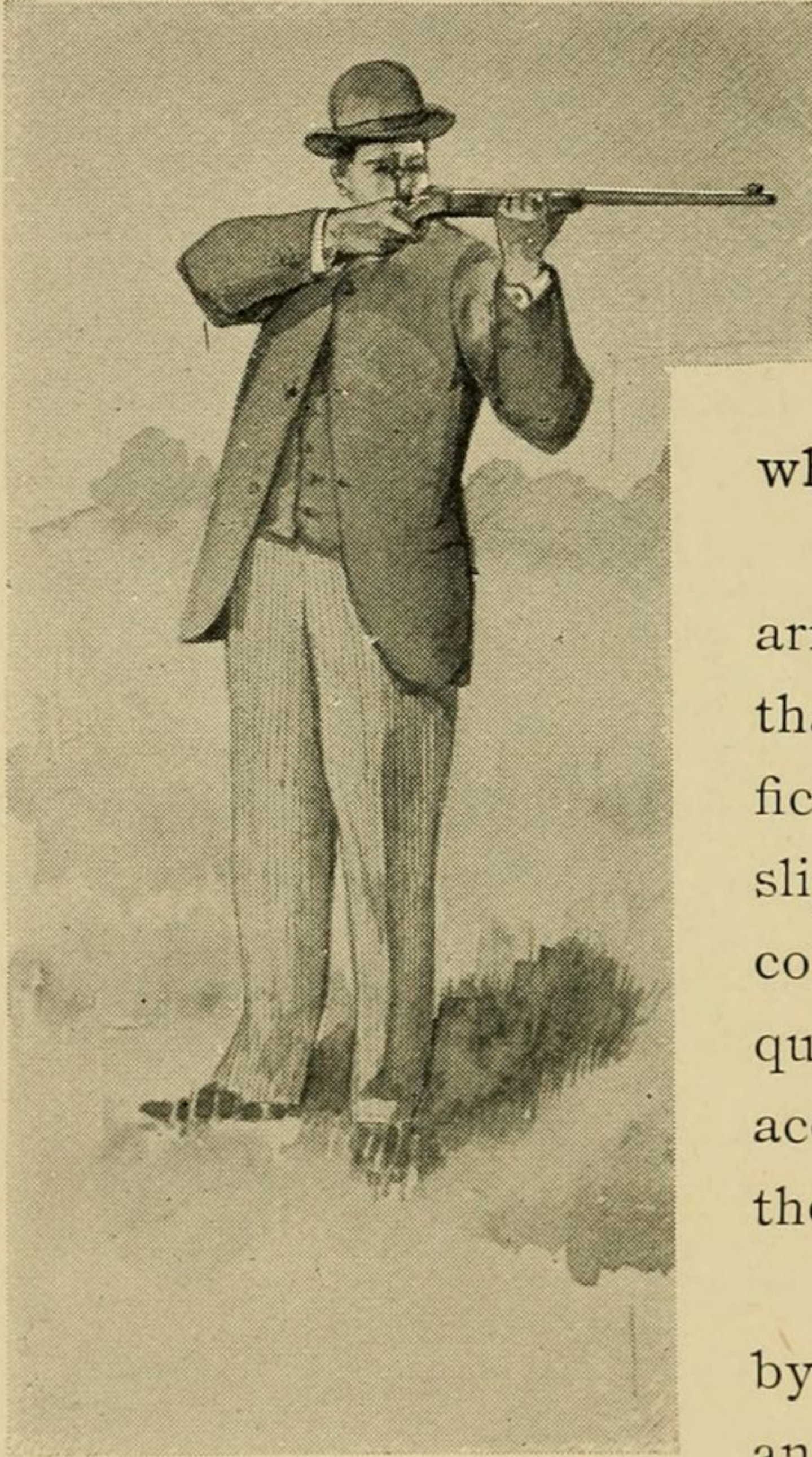
ANGLER SHOOTING ENTANGLED LINE FROM TREE

*With a Stevens Pistol.*

The factory of the J. Stevens Arms and Tool Co. is at Chicopee Falls, Mass. It is equipped with the finest machinery for manufacturing the celebrated Stevens rifles, pistols and pocket rifles. The highest skill is employed for boring and rifling these arms; and it is admitted by all familiar with the rifles and pistols that nowhere in the world has the art of rifle making been brought to a higher state of perfection than at this factory. Stevens rifles and pistols, from their high reputation, have found their way to every part of the civilized world, and, as a consequence, this company is in receipt of letters from various parts of the world asking for information in relation to rifle and pistol shooting. These questions cover a wide range of subjects. Most of our correspondents wish to know what rifles to select for particular purposes; the proper way to shoot a rifle or pistol; they inquire how to construct a suitable range; they also ask for recognized rules governing rifle and pistol shooting. As such information is difficult to procure, this Company has decided to publish in this booklet information which is most frequently sought.

A rifle is a gun, the inside of the barrel being cut with spiral grooves or channels, for the purpose of spinning the bullets when the exploded powder

creates a gas and propels the bullet from the barrel; this spinning motion giving range and accuracy to the bullet.



POSITION FOR OFF-HAND SHOOTING  
*With a Stevens Rifle.*

A pistol is a rifle so constructed that it may be carried in a small compass and held in one hand when shot.

A pocket rifle is an arm with shorter barrel than a rifle, thereby sacrificing range and accuracy slightly, and yet not so compact as a pistol, consequently securing greater accuracy than is found in the latter arm.

The rifles produced by the J. Stevens Arms and Tool Co. include rifles of regulation length and various calibres, pocket

rifles and pistols of suitable calibre and weight.

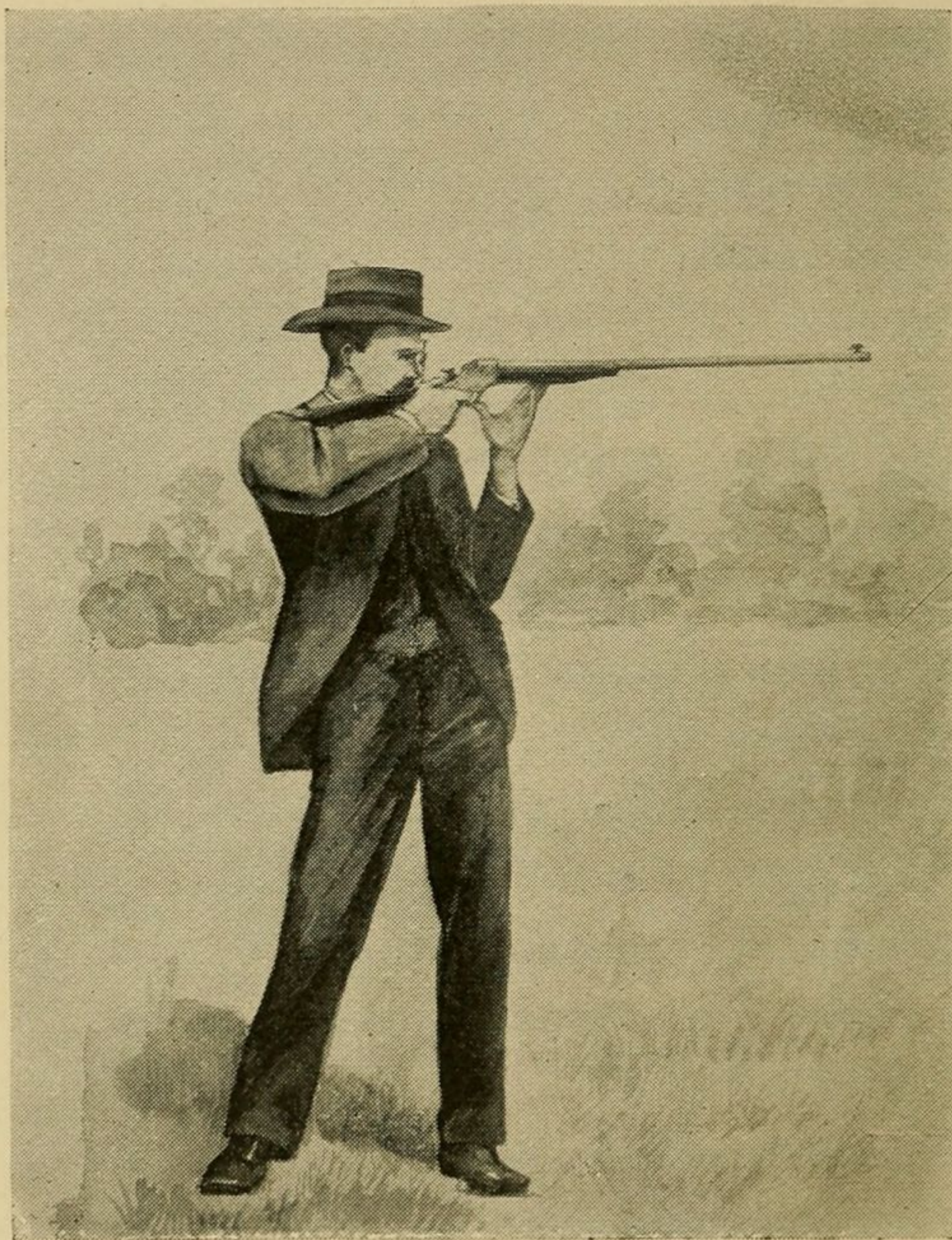
## SELECTING RIFLES

For all indoor shooting, such as gallery practice, or for shooting at ranges up to 100 yards; for shooting small game, in size up to and including a squirrel, a .22 calibre is recommended. The Stevens rifles are of various lengths and models, extremely light to very heavy in weight. Some prefer Stevens rifles with the old action, others choose the Ideal action. Some select the lightest rifle they can procure, while others insist upon having a heavy arm, with the full length of barrel made by this Company. It will readily be seen that this is a matter of individual choice, but by consulting our catalogue it will be found that arms of many weights, calibres and models are made by this Company.

A majority of experts who desire accuracy solely are inclined to select a heavy rifle, and for target shooting solely such a rifle is recommended; those who hunt generally prefer an arm of light weight; this is also recommended.

For shooting at the target off-hand at 200 yards, rifles of calibres from .25 to .38 are recommended. It has been repeatedly shown that Stevens rifles of small

calibre, with light charges, possess wonderful accuracy ;  
in fact, the scores made by some of our rifles of .25



THE HIP REST POSITION

*With a Stevens Rifle.*

calibre have been beyond the belief of riflemen of  
great experience, and it was only by witnessing the

shooting of these arms that they became convinced of their surprising accuracy.

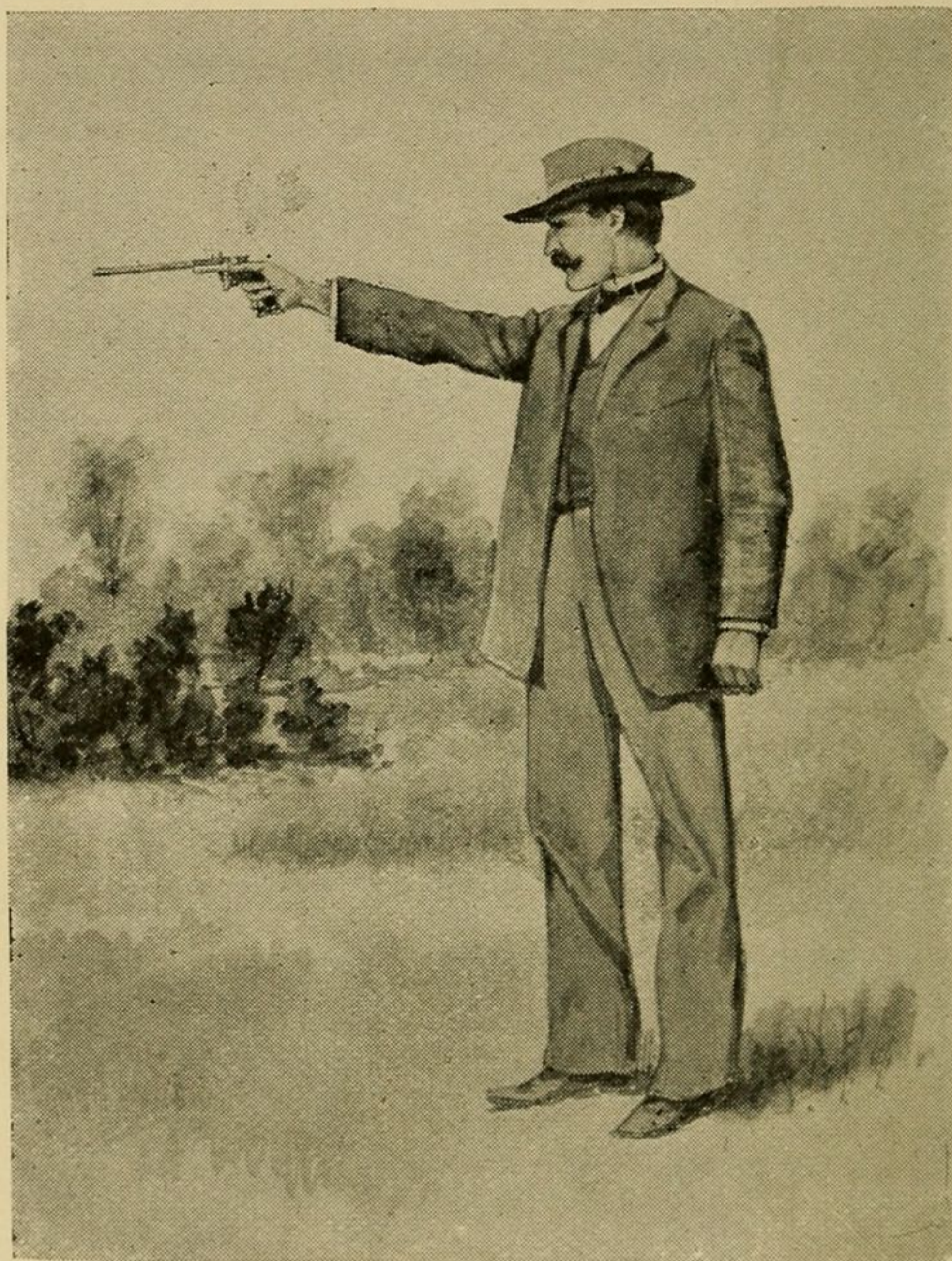
Rifles of greater calibre than .38 are rarely used for target practice. It has been made apparent to most riflemen that a rifle larger than .38 calibre for shooting up to 500 yards is unnecessary. If off-hand shooting is participated in chiefly, .25 or .32 calibre is preferred by most riflemen, because they possess all the requisite accuracy with no unpleasant recoil. If one prefers to shoot a rifle at rest, a heavy .38 calibre is chosen by many. It is a fact that the best known scores on record in this style of shooting, shot in various parts of America, have been made with the .38 calibre. There is but little difference in accuracy between the .32 and .38 calibre. It is slightly in favor of the latter; but the former is so much pleasanter to shoot, on account of less recoil, that, as a rule, riflemen do better shooting with .25 or .32 calibre than with a larger bore.



## PISTOLS

Stevens pistols are credited with most of the best known scores shot by nearly all the leading professional and amateur expert pistol shots in America

and abroad. Most of the expert pistol marksmen of to-day select the .22 calibre pistol. This Company



SHOOTING A STEVENS PISTOL

*With both Arms fully Extended.*

is prepared to supply pistols in every calibre, but it strongly recommends the .22 calibre, as these arms



TEACHING A LADY TO SHOOT

*With a Stevens Pistol.*

are chiefly used for target shooting, and no pistols in the world show greater accuracy than the Stevens pistols loaded with the .22 calibre long-rifle cartridge. These pistols possess astonishing accuracy up to a distance of 100 yards.



## POCKET RIFLES

These little arms have for many years been very popular. They are used largely for target shooting, but are particularly adapted for small game shooting. Page after page of testimonials as to their excellence for this purpose might be published did space permit. For the explorer, for the bicyclist, for the angler, for the hunter, the Stevens pocket rifle has proved to be an arm unequalled in accuracy or convenience. The .22 calibre is a popular bore. This Company is prepared to supply pocket rifles of this calibre for any of the .22 cartridges on the market. It also supplies, in its various models, pocket rifles for other cartridges. With a Stevens pocket rifle one can while away the tedium of a rainy day in camp; small game can readily be killed with these wonderful arms.

Many of those who purchase Stevens rifles associate themselves together, forming clubs for rifle

practice, shooting prize matches. One of the first steps of a new rifle club is to provide a safe range for practice. Great care should be exercised in selecting



SHOOTING A RUFFED GROUSE

*With a Stevens Pocket Rifle.*

a range, for this work, when properly done, not only aids the rifleman in his shooting, but avoids unpleasant

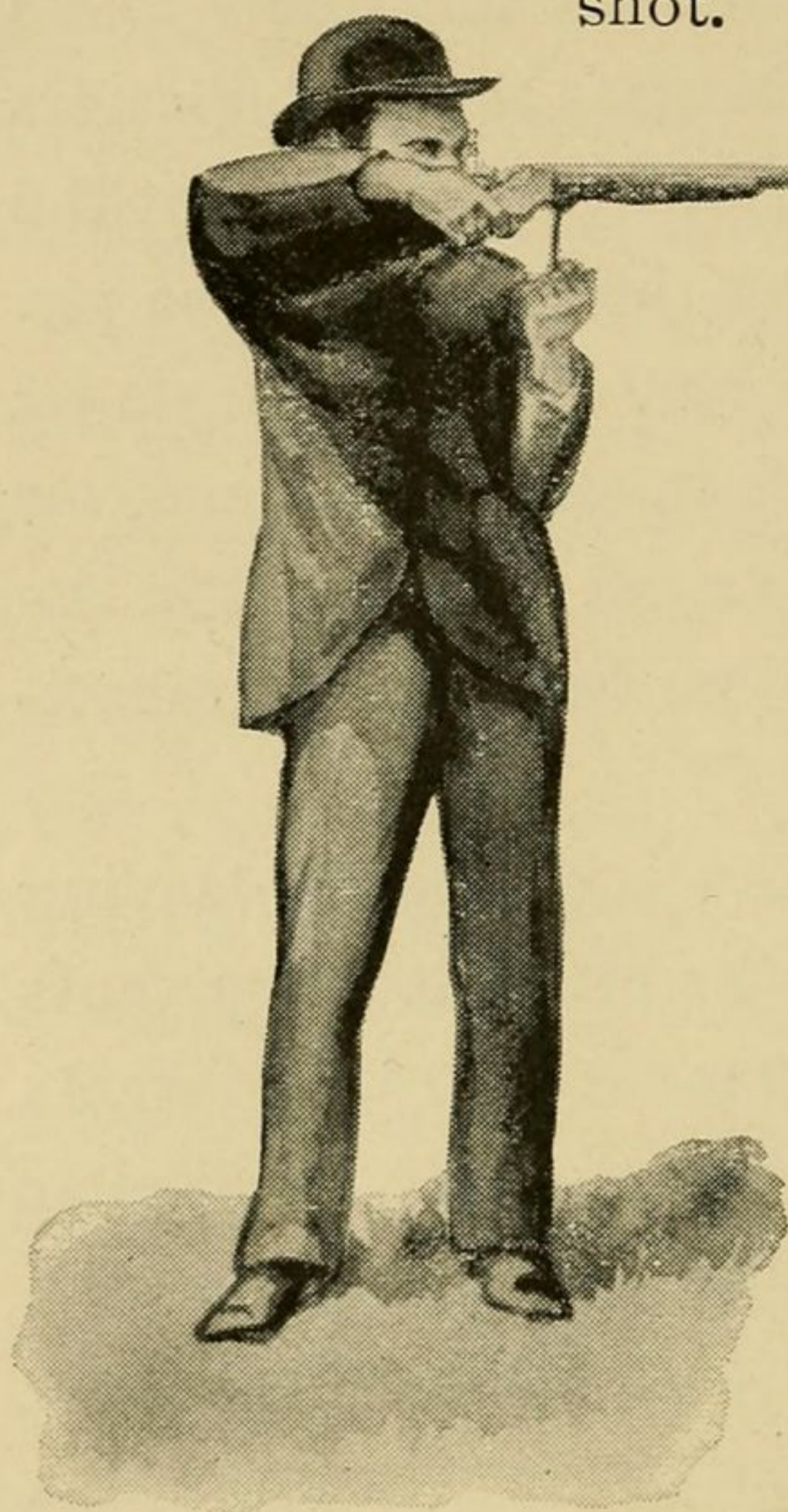
results from accidents. In selecting a piece of ground for a rifle range, it is desirable to choose as level a place as possible, avoiding gullies, for currents of air sweeping through such places considerably affect the shooting. When possible, place the targets so the shooting will be toward the north. By so doing, you will avoid the sun shining in the faces of shooters. If more than one distance is desired, try to have all the firing points side by side. This precaution is desirable. Wherever the targets are placed, be sure there is a good backing of earth behind them to receive the bullets. A natural backing, such as a hill, is to be preferred; but if this is impossible, build a mound sufficiently thick to stop the bullets. This backing should be at least three or four feet thick. A pit should be dug about eight feet deep, the sides and bottom of which should be paved with brick or stone, to prevent the dirt falling into the pit, which would make it muddy in wet weather. The distance between the firing point and pit should be accurately measured; when measuring ranges use a metal tape line. In front of the pit build another earth barrier at least four feet thick.

After the pit is constructed, the target may be placed therein. Paper targets are strongly recom-

mended in preference to those of iron or other material. The bullets readily pass through a paper target into the bank of earth behind it, and are not likely to do any harm; with iron or steel targets the lead spatters and necessitates the closing of the pit to prevent the flying particles of lead injuring the marker in the pit. Besides greatly lessening the chances of accidents by using paper targets, is the gain in saving the lead, for the bullets fired through the target are caught in the earth behind the targets, and can be used for recasting bullets, or sold.

It is desirable to cover the top of the pit, leaving a peek-hole for the marker in the pit to spot the shots on the target. The arrangement for the targets which has given the best satisfaction is built similar to a window. There is a frame erected, and a sash within the frame. On to this sash tack gunny cloth, and over that cotton cloth. The targets are pasted on the cotton cloth. The frame is placed in the pit and the sash within it; the sash is raised to the top of the frame, up out of the pit, when a shot is fired on the target. The marker usually spots the shot with a disk, after which the target is pulled down into the pit; a plug, with a white disk attached, if the shot is on the black, or a black disk if outside of the bull's-eye,

is placed in the shot hole; the target is then raised again for the marksman to see the exact location of the shot. After this the target is again



POSITION ADOPTED  
*In Shooting a  
Stevens Schuetzen Rifle.*

lowered into the pit and the shot hole pasted over, after which the target is thrown up again for the next shot.

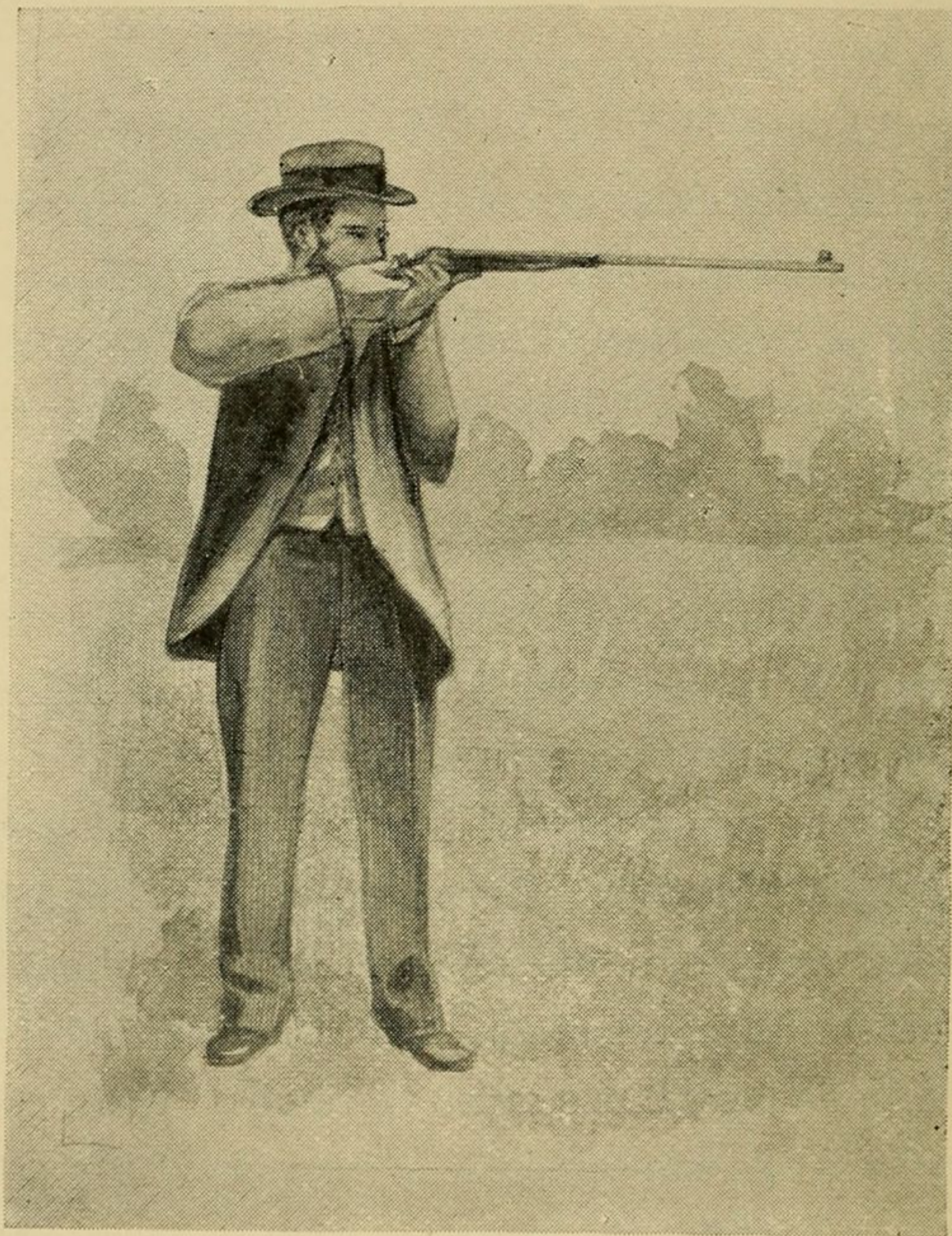
Most clubs prefer a dial by the side of the target; the numbers on this dial corresponding to the hour signs on a clock, and show the count of the target. A hand is moved to the number representing the value of the shot. When the target counts larger than 12, the dial is not used, but in place a card with the number of the value of the shot on it is exposed by the marker. This is seen at the firing point, either with the naked eye or by the aid of the telescope, and the value of the shot is recorded by the scorer on a score card or in a book.

# POSITIONS IN RIFLE SHOOTING

The positions adopted by riflemen in shooting are varied. A number are given in this publication which represent the most favored positions by expert riflemen in shooting Stevens rifles. Figure 1 shows the strictly off-hand position; figure 2, what is known as the breast rest position; figure 3, the hip rest position; figure 4, the mode of shooting the Stevens Schuetzen rifle, with a plam rest attachment; figure 5, the usual mode of shooting a Stevens rifle with a rest, which is recommended for those who wish to test their rifles. It should be borne in mind that there is considerable skill necessary to demonstrate the possibilities of a rifle, even when shooting with a firm rest. Beginners should remember this. Repeatedly rifles have been condemned and pronounced inaccurate by those who are expert in off-hand shooting but not skilled in rest shooting, but when these arms were shot by an expert familiar with rest shooting, they have shown extreme accuracy.

There are recognized rules governing rifle and pistol shooting. There are some slight variations by the different clubs, but those printed in this publication are in substance those followed by the Massachusetts

Rifle Association, and most of the prominent clubs throughout the United States. They are recommended



THE BREAST REST POSITION

*For Shooting a Stevens Rifle.*

for those forming clubs, or for those who wish to shoot under the rules generally followed by expert marksmen.

# RULES

## GOVERNING COMPETITIONS



### I—MANAGEMENT

1. All meetings for competitions will be conducted by an Executive Officer, aided by a Statistical Officer and Assistants.

2. The Executive Officer shall have control of the Range for the conduct of matches, and shall give such directions to the employees of the Association as in his judgment are necessary for the proper management of the same, and for the preservation of order.

3. The Executive Officer and his assistants are required to see that the regulations, and such directions as the Executive Officer may give, are rigidly complied with by competitors and all other persons upon the Range.

4. They will see that the squads of competitors are stationed in rear of firing-points, and that each competitor remains there until called by the score-keeper to take his position at the firing-point. The score-keepers will be seated in rear of the firing-points.

5. Score-keepers shall, as each shot is signalled, call in a loud voice the name of the competitor and the value of the shot, and, at the conclusion of the score of each competitor, announce in like manner his name and total score.

6. All competitors shall be allowed to examine the records of the score-keeper during the progress of the match, but in

such a manner as not to interfere with or inconvenience the score-keeper.

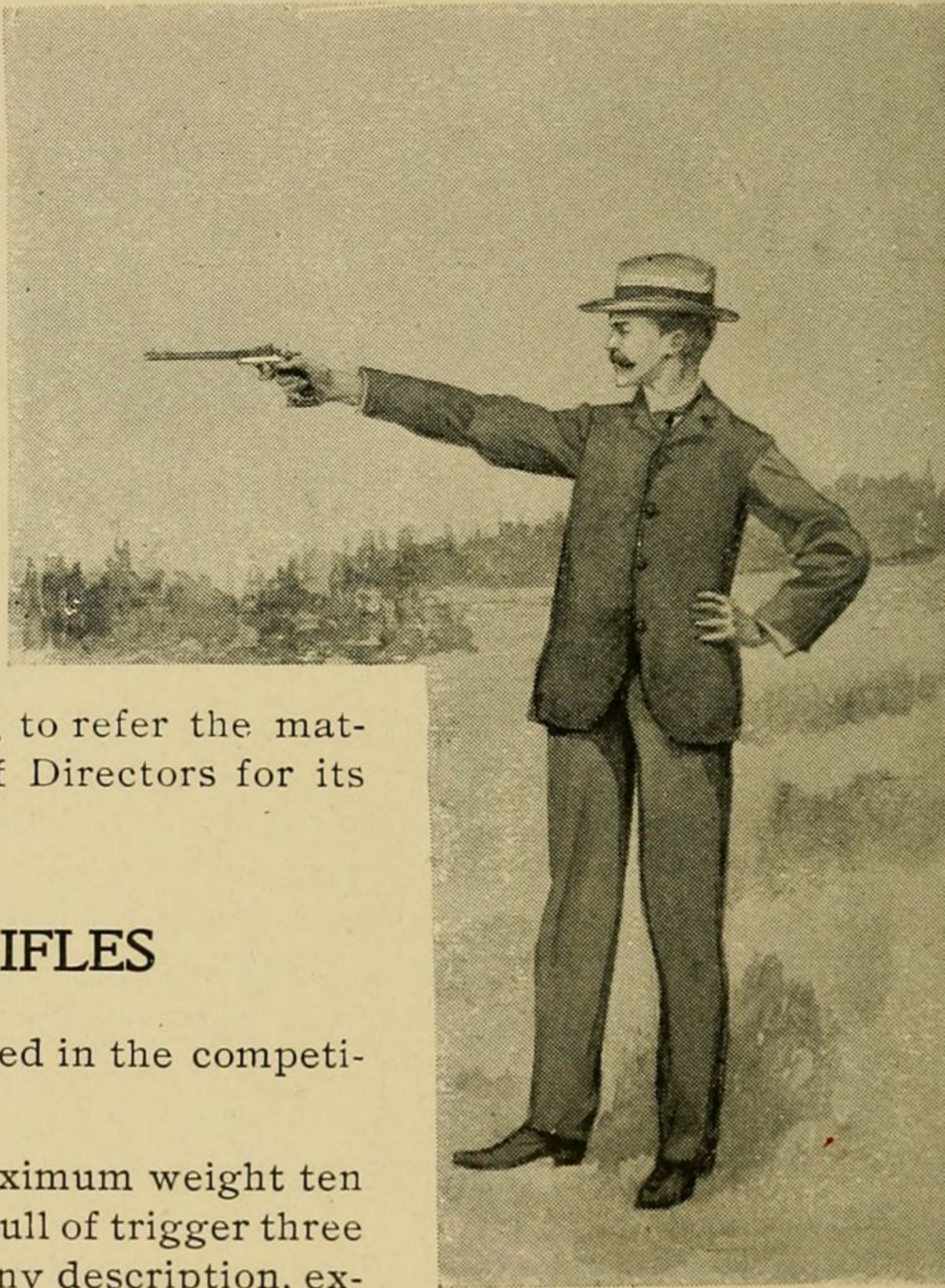
7. Any competitor feeling himself aggrieved by the ruling of the Executive Officer or of the Statistical Officer may make to the Secretary a statement of his grievance in writing, which shall be handed at once to the Executive Committee for its consideration.

The decision of the Executive Committee shall be final, subject, however, to the discretion of said committee, or any two members of it, to refer the matter to the Board of Directors for its decision.

## II—RIFLES

The rifles allowed in the competitions are:

1. *Any rifle*, maximum weight ten pounds, minimum pull of trigger three pounds; sights of any description, except telescope, magnifying, and such front aperture sights as solid disks or bushes pierced in the centre, which cover the target so as to conceal the danger-signal when displayed. No



SHOOTING A STEVENS PIST  
*Right Arm fully Extended,  
Left Akimbo.*

stirrup constructed of metal or other substance, connected to the rifle by straps of any kind, for the purpose of taking up or lessening its recoil, will be allowed.\*

2. Competitors shall submit their rifles and ammunition for inspection whenever required.

3. No hair or set-trigger will be allowed.

4. No fixed or artificial rests will be allowed.

5. 3 and 4 do not apply to rest-matches.\*

### III—TARGETS

The following described targets are in general use.

The targets, commonly known as Creedmoor targets, are divided into three classes, as follows:

1. *First Class*, to be used at all distances over 600 yards.

Target, 6 x 12 feet.

Bull's-eye, circular, 36 inches in diameter.

Centre, " 54 "

Inner, square, 6 feet x 6 feet.

Outer, " 6 feet x 12 feet.

2. *Second Class*, to be used at all distances over 300 to and including 600 yards. Target, 6 x 6 feet.

Bull's-eye, circular, 22 inches in diameter.

Centre, " 38 "

Inner, " 54 "

Outer, the remainder of the target.

3. *Third Class*, to be used up to and including 300 yards.

Target, 4 x 6 feet.

Bull's-eye, circular, 8 inches in diameter.

Centre, " 26 "

Inner, " 46 "

Outer, square, 4 x 6 feet.

---

\* Many clubs now permit rifles of any weight and any trigger pull. Telescope sights are allowed in rest shooting.



## COLUMBIA TARGET

Bull's-eye, 12 inches. The whole target, including the bull's-eye, divided into circles  $\frac{1}{2}$  inch apart. The centre circle being one inch in diameter counts 1, the second circle counts 2, and so on out to 26. A shot outside the 26 circle counts 27.

## STRING MEASUREMENT

Measure from the centre of the bull's-eye to the centre of each shot hole; add together. The shortest string is best.

## IV—MARKING, SCORING AND SIGNALING

The value of shots on Massachusetts and Standard American targets is shown on a clock-face dial placed near the target, and the location of shot by a small disk placed over the bullet-hole.

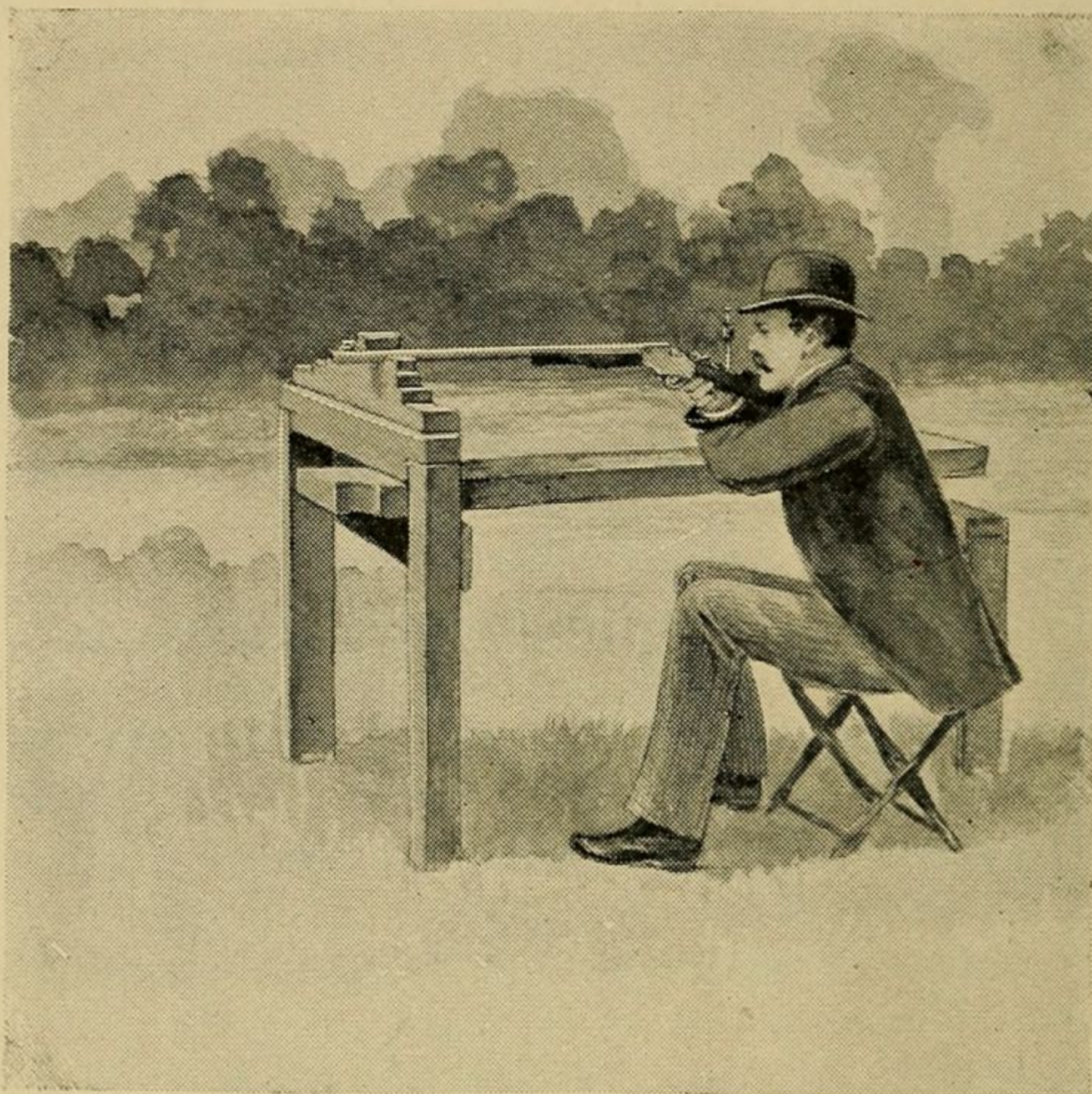
1. On Creedmoor target. Bull's-eye counts 5; signal, white circular disk. Centre counts 4; signal, red circular disk. Inner counts 3; white and black signal, disk. Outer counts 2: signal, black disk. Ricochet counts R; signal, red flag waved twice, right and left, in front of the target. Ricochet hits will be marked out after the flag-signal. Shots on the wrong target, if not scored, will be marked \$.

The carton (count 6) on first-class target is 22 inches; on second-class targets, 11 inches.

2. When a shot strikes any part of a target outside of the boundary of the "Outer," a square red disk will be raised and lowered in front of the bull's-eye twice. Such shot is termed an "Angle-iron," and will be marked A.

3. Challenges will only be permitted at the discretion of the Executive Officer, and the challenging party must deposit fifty cents, to be forfeited in case the challenge proves unfounded. The Executive Officer may, in his discretion,

challenge the marking of any shot the allowance of which would be unjust to other competitors, and correct the score accordingly.



POSITION AND MANNER OF SHOOTING

*a Stevens Rifle at Rest.*

4. Any objection to the scoring of a shot as signalled, or to one not signalled, must be made before another shot shall have been fired on the same target.

5. Scorers will, in cases where two disks of differing value are shown for one shot, record the value of the one first shown; but it shall be the right of the shooter to challenge the scoring (without being required to deposit), and the Executive Officer may decide upon the evidence the actual value of the shot.

Where two shots strike the target simultaneously, the shooter shall have scored to him the shot of the higher value.

6. Any alteration of a scoring-ticket must be witnessed by an officer in charge of the firing-point, and indorsed with his initials.

7. Double entries are prohibited, no shot being allowed to count in more than one match.

8. No sighting shots shall be allowed except on targets specially designated for that purpose by the Executive Officer, and in no case on targets on which a match is in progress, unless in an emergency, to be decided by the Executive Officer.

9. Unfinished scores shall be considered worthless after having been withdrawn from the scorer, and no shots can be claimed under or by virtue of the same after having been so withdrawn.

10. No scorer is allowed to have at one time more than one score-card for each shooter, and no shooter is allowed to shoot without having an unfinished score-card deposited with the scorer.

## V—POSITION

1. In all matches the position up to and including three hundred yards shall be standing. The elbow may be rested against the body.

2. At distances above three hundred yards any position may be taken without artificial rests to the rifle or body.

## VI—TIES

Ties shall be decided as follows, viz.:

A. At more than one distance, whether by individuals or teams:

1. By the score at the longest distance.
2. By the score at next longest distance.
3. By the fewest misses.

4. By the fewest outers.
5. By the fewest inners.
6. By the fewest centres.
7. By the inverse order of shots, from last to first, as actually fired.

8. In individual shooting, by firing single shots at the longest distance; in team shooting, by firing one shot by each man at the longest distance.

B. At one distance, whether by individuals or teams:

1. By the fewest misses, outers, etc., as per foregoing Rule A, 3 to 7, inclusive.

2. In individual shooting, by firing three shots, the merit of which shall be decided by the above rule; if still a tie, by single shots.

3. In team shooting, by firing one shot by each man of the team, repeated until a team wins upon the aggregate of the same.

C. At one or more distances, individual shooting, where two or more scores are required to win:

1. By foregoing Rule A, 3 to 7, inclusive.

2. By inverse order of shots, treating the scores, in the order in which they are made, as one continuous score.

3. By shooting as per Rule B, 2.

D. Ties in reëntry matches to be decided by the next highest score or scores.

In single-score matches, on all targets, the score containing the lowest shot shall rank lowest; if still a tie, by inverse order of shots; and, if still a tie, by each competitor shooting three shots, until decided.

No scores with handicap shall exceed a perfect score.

Competitors who have to shoot off ties will be notified as soon after each match as practicable. When the ties are shot off, one sighting-shot shall be allowed without charge. Competitors not present at the firing-points at the hour named for

shooting off the ties lose their right to shoot, and will be placed accordingly.

## VII—GENERAL RULES

1. Temporary discontinuance of matches, on account of bad weather, and the closing limit for receiving entries, shall be at the discretion of the Executive Officer.

2. An entry-ticket, except when sold in block, may be transferred at any reasonable time, by presenting it to the Statistical Officer for exchange. Any erasure or substitution of name by the holder will forfeit the ticket.

3. In single-entry matches no entry shall be made after the firing begins if any participant objects.

4. Bull's-eye certificates not presented within thirty days, and prizes not claimed within three months after having been won, shall be forfeited to the Association.

Competitors will have choice of prizes unless otherwise stated.

The Executive Officer shall have power to appoint assistant officers and supply badges to same.

Regular Shooting Days for Rifle shall be every Saturday and such other days as the Directors may order.

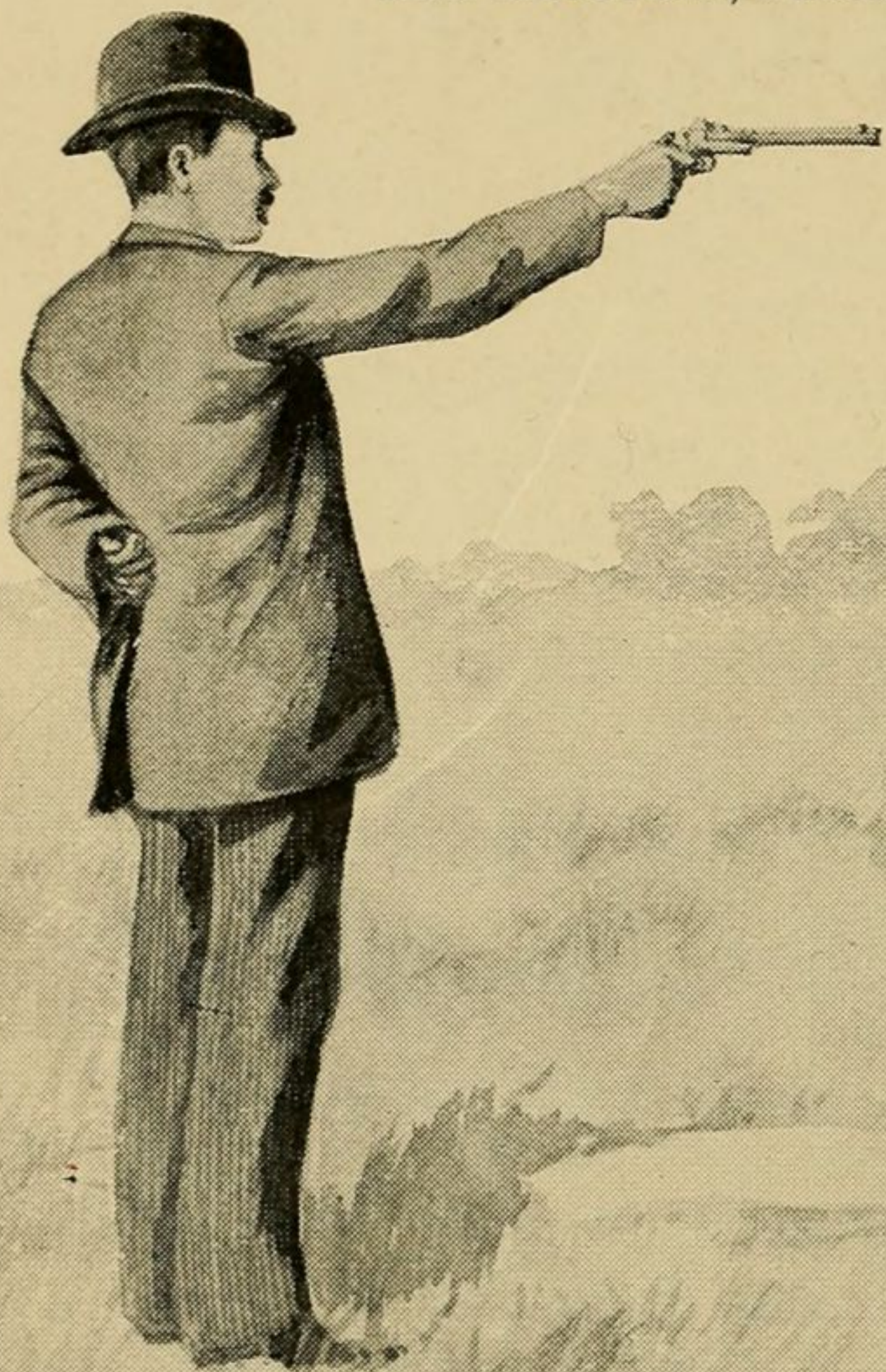
## VIII—PENALTIES

1. Competitors must make themselves acquainted with the regulations, as the plea of ignorance will not be entertained.

2. No competitor shall be allowed to use more than one name besides his own in any one match.

3. A competitor failing to report at the time and target to which he is assigned, or shooting at pool or practice after the hour set for the simultaneous opening of a match, shall forfeit his entry. (The last clause will not prevent pool-shooting between scores in reentry matches.) Any member shooting at pool or practice between shots of a score shall forfeit the score.

4. All competitors and other persons must preserve order and decorum, submit to the direction and decisions of the Executive Officer, and make all objections and protests, if any, to the proper officials, in a manner which will not disturb others.



SHOOTING A STEVENS PISTOL

*Position Adopted by some Marksmen.*

6. Any violation of rules or discreditable conduct which the Executive Officer may consider of such magnitude as to require it, shall be reported to the Directors for their action.

7. Any shooter firing upon the wrong iron target shall be fined one dollar, and on the wrong paper target fifty cents, to be paid before he proceeds with his score, and he shall be recorded a miss.

5. Rifles may be discharged only in firing at the target in pools or matches, when the danger-flag is not exposed, or into such warming-pits as may be designated (in that case, without bullet), and any competitor or other person discharging a rifle otherwise, or having a loaded shell inserted in his rifle while elsewhere than upon the actual firing-point, may be disqualified for the time being, or fined a sum not exceeding three dollars, at the discretion of the Executive Officer.

# RULES FOR PISTOL SHOOTING



Any breech or muzzle loading pistol may be used; maximum length of bore, ten inches.

## TRIGGER PULL

In all matches, or in practice shooting, the minimum trigger pull shall be two pounds for the single-shot pistols.

## SIGHTS FOR ANY PISTOLS

The front and rear sights must be open and not more than ten inches apart; the notch of a rear sight, to be considered open, must be as wide at the top of the notch as at any part; no aperture or peep sights, nor any manner of covered sights shall be permitted. Lateral sliding bars or wind gauge may be used on rear open sight, also any elevating front or rear open sight. The use of a notch for a front sight will not be permitted. Sights may be smoked or blackened in any desired manner.

## AMMUNITION

If factory ammunition is called for, it shall be of any make or any established manufacture generally procurable in stores.

## CLEANING

Competitors may clean their arms at will, provided such cleaning does not delay the firing, which shall be at the rate of one shot per minute, when time limit is required, or oftener,

during the firing of each score, except in case of accident. In such case the time may be extended in the discretion of the Executive Officer.

## LOADING AND FIRING



No arms shall be loaded except at the firing point, the muzzle of piece being kept in the direction of the target till the arm is either discharged or unloaded.

Misfires shall not count; but an accidental discharge shall, in every instance, be scored a shot.

## POSITION

The position shall be as follows: Standing free from any other artificial support, the pistol held in one hand only, with the arm extended free from the body, and unsupported in any way.

## TARGETS

The Standard American target, full size, having an eight inch bull, shall be used in matches at fifty yards' distance. The same target reduced to one-half size,

POSITION ADOPTED BY AN EXPERT  
MARKSWOMAN

*In Shooting a Stevens Pistol.*

having a four inch bull, in matches at thirty yards' distance. The target reduced to one-quarter size, having a two inch bull, in matches at twenty yards' distance. The target reduced, in the same proportion to distance, in matches of a lesser range.

## **MARKING AND SCORING**

Unless otherwise specified, each competitor will have a separate target provided, and will fire his score throughout, when the target will be examined by the scorer and the score recorded.

## **VALUE OF SHOTS**

If a bullet touches a line, the count of that line is given; shots on or within that line count the same. The eye alone shall determine the count. Placing a bullet or other articles in the shot hole is not permitted.

## **APPEALS**

In case of a challenge, or of dissatisfaction in any way connected with the shooting, in matches or practice, being referred to the Executive Officer, he or his representative shall render a decision. Should his decision be unsatisfactory, an appeal may be made in writing to the Executive Committee; the decision of the majority of this committee shall be final.

## **TO AVOID DANGER**

No unnecessary talking will be allowed to or by shooters while on the firing point with loaded pistol.

# A BRIEF LIST of the Principal Products of The J. Stevens Arms and Tool Co.

• • •

## STEVENS RIFLES

### Rifles with Side-snap Action

**Nos. 1 and 2 Models**, open sights, .22, .25, .32, .38 and .44 calibres.

**Nos. 3 and 4 Models**, combined sights, same calibres as Nos. 1 and 2.

**Nos. 5 and 6 Models, EXPERT RIFLES.** Beach front sight; open rear sight on barrel; Vernier sight on grip; for same cartridges.

**Nos. 7 and 8 Models, PREMIER RIFLES.** Same sights and for same cartridges, but with forestock and Swiss butt plate.

**Nos. 9 and 10, NEW MODEL RANGE RIFLES.** Wind gauge front sight; Vernier rear sight; forestock; for .22, .25, 32, .32-35 Stevens, .38 or .44 calibre cartridges.

**Nos. 13 and 14 Models, LADIES' RIFLES.** Weight, 5½ pounds; Beach front sight; open back sight on barrel; Vernier sight on grip; using rim or central-fire cartridges, .22 and .25 calibres.

**Nos. 15 and 16 Models, CRACK SHOT RIFLES.** Lyman ivory bead front and Lyman rear sight on grip.

**LATEST IDEAL MODEL, Lever Action.** This and the following rifles for modern cartridges from .22 to .38 calibres.

**No. 44, Sporting and Gallery Rifle.** Open front and rear sight.

**No. 45, Range Rifle.** Target sight.

**No. 46, Range Rifle.** Same as No. 45, but fancy stock.

**No. 47, Range Rifle.** With pistol grip stock.

**No. 48.** Same as No. 47, but with fancy stock.

**No. 49, WALNUT HILL MODEL.** Target sights; pistol grip; cheek piece on stock.

**No. 50.** Same as No. 49, but with fancy stock.

**No. 51, SCHUETZEN.** Heavy weight; cheek piece; set triggers.

**No. 52, SCHUETZEN, Jr.** Same as No. 50, but heavier and with double set triggers.

**No. 53, SCHUETZEN RIFLE.** With palm rest; same in other respects as No. 51.

*Any of the foregoing rifles fitted with sights, including telescope sights, to suit our customers.*

## SURE SHOT RIFLES

Side-motion action; in .22 calibre for the long rifle, the short or Flobert cartridge; 20 inch barrel; weight, 3½ pounds.

## FAVORITE RIFLE

With lever action; for .22 and .25 calibre rim fire cartridges; barrels, 22 inches long; weight, 4½ pounds; any sights.

## POCKET RIFLES

**Hunters' Pet Model.** Rifles of this model are made with barrels 13 to 24 inches in length, for various cartridges. The arm weighs 5 to 5¾ pounds. A shotgun is made in this model, or a rifle barrel and a shotgun barrel, both barrels interchanging in one stock; fitted with open, combination or target sights.

**New Model, or Bicycle Rifle.** These arms weigh from 2 to 2¾ pounds, and are for .22 and .25 Stevens rim fire or .32 calibre short cartridges; shotgun barrel or rifle and shotgun barrel for one stock; open, combination, target or telescope sights.

## RELIABLE POCKET RIFLE

In .22 calibre, with 10 inch barrel.

*Remember, too, that this Company re-bores rusted and worn-out rifles to larger calibres.*

## STEVENS PISTOLS

**Lord Model.** For any pistol cartridge; barrel, 10 or 12 inches; weight, about 3 pounds.

**Gould Model.** With 10 or 12 inch barrel; weight, 2 pounds; .22, .25 or .32 calibre.

**Conlin Model.** Same as Gould model, excepting a spur on the trigger guard.

**Diamond Model.** .22 calibre; 6 or 10 inch barrel; weight, about 10 ounces.

## FINE MACHINISTS' TOOLS

*This Company also manufactures a very large line of fine machinists' tools, among which are:*

Spring Calipers and Dividers.  
Spring Screw Calipers.  
Spring Keyhole Calipers.  
Inside Spring Calipers.  
Reliable Inside Calipers.  
Spring Dividers.  
Spring Dividers, with Thumb Attachment.  
Patent Helical Coil Spring Calipers.  
Parallel Dividers.  
Firm Joint Calipers.  
Firm Joint Hermaphrodite Calipers.  
Wing Firm Joint Calipers of various patterns.  
Bicycle Spoke Nipper.  
Spring Calipers of many designs.  
Spring Dividers.  
Spring Keyhole Caliper.  
Surface Gauges.  
Outside and Inside Caliper and Divider.  
Stevens Universal Threading Tool.  
Stevens Ideal Compasses.  
Stevens Adjustable Scratch Gauge.  
Stevens Micrometer.  
Stevens Universal Bevel.  
Steel Rules  
Centre Indicators.  
Tool Makers' Clamps.  
Universal Centre Square.  
Cutting Nippers.  
Lock Joint Calipers.  
Transfer Calipers.  
Machinists' Scriber.

*Further particulars will be found in our catalogue, which will be sent free to any part of the world.*

The J. Stevens Arms and Tool Co.

Chicopee Falls, Mass.

U. S. A.

511  
36

114







OCT. 68



N. MANCHESTER,  
INDIANA

LIBRARY OF CONGRESS



0 020 237 117 6