

F 574

.D4 D42

Copy 1

Delegates

SHOPPING GUIDE of Detroit

ILLUSTRATED



50 INTERESTING TRIPS
WHERE TO SHOP
SOUVENIR PICTURES

AUTHORIZED BY
DETROIT HOTEL ASSOCIATION

Index of Advertisers

Where You May Shop with Reliable Merchants

Women's Apparel	<i>Page</i>
B. Siegel Co., Woodward Avenue and State Street	1
Pack-Wolin Co., 76 Washington Boulevard	11
Taylor's, 223 Woodward Avenue	15
Pennington Blouse Shop, 25 John R Street	18
Rollins Co., 259 Woodward Avenue	27
Millinery	
Cohn, 11 Adams East	40
Shoes	
Rogers Shoe Co., David Whitney Building	10
Dr. Reed Cushion Shoe Co., 272 Woodward Avenue	36
Men's Furnishings	
Canton Co., Next to Statler on Boulevard	26
Leather Goods	
Tuttle & Clark, 253 Woodward Avenue and Jefferson and Bates	3
Furs	
Ross Fur Co., 14 Adams West	23
Jewelry	
Wright, Kay & Co., 207-11 Woodward Avenue	14
Hugh Connolly & Son, State and Griswold	17
Books	
John V. Sheehan & Co., 262 Woodward Avenue	29
Gifts	
Bleazby Gift Shop, 9 Adams East	12
Drugs and Kodaks	
Cunninghams, 110-155-219 Woodward Avenue	32
Tea Rooms	
Andrew Hair, 258 Woodward Avenue	19
Woman's Exchange, 23 Adams East	7
Restaurants	
Striker's Cafe, Lafayette Boulevard and Shelby	28
Cunninghams, Adams Avenue, Kresge Building	32
Andrew Hair	19
Bank (National)	
First and Old Detroit National, Ford Building	20
Bank (State)	
Highland Park State Bank of Detroit, 43 Fort Street West	37

Index

Hotels, Railroads, Steamships, General Information

	<i>Page</i>		<i>Page</i>
History	2	Ameriean League Baseball Schedule	22
Parks	3	<i>Facts of Detroit</i>	24-5
Detroit River	6	Amusements	9-26
Clubs	11	Leading Theatres	28
Interesting Automobile Drives	13	How to Reach Depots and Docks	33
Public Buildings	12	Boat and Trolley Trips	5-35
Largest Exclusive Newspaper Building	29	Detroit's Hotels	39
Map of Center of Detroit	16	Mt. Clemens	31
Population	17	Diversified Industries	40
Leading Motion Picture Theatres	21	Boat Fares	47
Museum of Art	17	Sight Seeing Cars	26

Detroit Hotel Association

822 Ford Building

FRANK W HARRIMAN, PRES.
HOTEL PONTCHARTRAIN

L. W. TULLER, VICE-PRES.
HOTEL TULLER

ROBERT C. PINKERTON, SEC'Y
HOTEL NORMANDIE

HARRY L. ZEESE, TREAS.
HOTEL STATLER

MEMBERS EXECUTIVE BOARD

HARRY L. ZEESE

CHARLES W. NORTON

JAMES D. BURNS

GEORGE FULWELL

JAMES R. HAYES

• FEB •

25 1919



B. Siegel Co's

Is the Largest Establishment in America
Devoted Exclusively to Women's and
Children's Apparel

This store is not only known throughout the length and breadth of America as the most complete in stocks of feminine outer apparel but it caters to the most critical clientele who rely explicitly on the authenticity and newness of its fashions.

"Where Fashion Reigns"
B. SIEGEL CO
CORNER WOODWARD & STATE

Brief History of Detroit



DETROIT was founded by Antoine de la Mothe Cadillac in July, 1701, and the twenty-one decades of its history have been most interesting.

After the site was chosen, a palisade enclosure was erected and called Fort Pontchartrain, after the minister of Louis IV.

Detroit is one of the few American cities that has been under three flags, two of them twice. The French ruled until 1760, when the English became masters until 1796, General Wayne conquering this region for the new Republic.

In 1813, the English again assumed control, but Commodore Perry's victory at historical Put-in-Bay, near Detroit, gave the entire territory to the United States.

In 1805 Michigan was formed into a territory with Detroit as the Capital, and was admitted to the Union in 1837. The Capital was then moved to Lansing.

Detroit was destroyed by fire in 1805, which was a blessing in disguise, for it resulted in replanning the broad streets, many parks and public squares that comprise the Beautiful City of today.

The rule of Governor and Judges lasted until 1824, when the Legislative Council was elected and chosen.

Parks

Our famous park system, second per capita to none on the continent, includes that most superb recreation ground, Belle Isle, with its 707 acres of rest, recreation and unsurpassed beauty.

There are thirty-eight public parks upon which the city expends almost a million dollars yearly for upkeep, furnishing its people and visitors amusement.



Detroit's Greatest Specialty Stores



LUGGAGE

LEATHER
NOVELTIESTOURING
REQUISITESMOTOR
APPARELMARK CROSS
AGENTS

TWO STORES

Down Town
Cor.
Jefferson
and Bates



Up Town
253
Woodward
Fisher Arcade

Belle Isle

Belle Isle is admitted one of the finest parks in America. It is three miles long and one-half mile wide. It has fine improved roads, shrubbery, beautiful flower beds, an extensive wild animal zoo, athletic field with several baseball diamonds, tennis court, foot ball fields, etc., fine aquarium, horticultural building, the Detroit Boat Club and Detroit Yacht Club, a public boat house where canoes and row boats can be rented, two fine bathing houses and beaches equipped to care for hundreds of bathers. At Belle Isle are many miles of pretty canals and lakes, playgrounds for children and a special play house and play yard for babies and very small children with nurses in attendance. Belle Isle is reached in 20 minutes from the foot of Woodward Avenue by boat, or by Jefferson car east on Jefferson to the Grand Boulevard, thence on foot or auto bus across bridge five-eighths of a mile long. Another way is to take street car as above, then take small ferry from Belle Isle Bridge to the island.



Woodward Avenue

Is the artery which divides Detroit approximately in the center. Woodward runs north from the Detroit River beyond the city limits. It is solid business from the river for one mile north, after which it passes through a district which was residential until the automobile salesrooms and service stations took possession, since which the street is rapidly becoming exclusively a business thoroughfare from the river to the city limits, eight miles out.

Palmer Park

Next to Belle Isle, Palmer Park is the prettiest park in Detroit. It is located out Woodward Avenue six miles from the city hall (take Woodward cars marked "Log Cabin"). This park was presented to the city of Detroit many years ago by the late Hon. Thomas W. Palmer, former U. S. Senator from Michigan, and one of Detroit's most honored citizens. Palmer Park comprises about 150 acres.



A Superb Outing

Is the all-day ride up the river, leaving Detroit at 8:45 a. m. on the magnificent steamer Tashmoo, past beautiful Belle Isle, across Lake St. Clair, through the "Venice of America," the St. Clair Flats, and on up the St. Clair river to Port Huron, and returning at 8:45 in the evening. Stops are made at all points of interest between Detroit and Port Huron. The excursionist is taken along a grand waterway, through picturesque scenery, past thriving towns. Nowhere can so much of beauty, interest and healthful recreation be crowded into one day as during a trip from Detroit to Port Huron, along the St. Clair river, 130 miles on one of the finest day boats in the world, for \$1.25 R. T. To the Flats or Tashmoo Park 70c R. T. week days, 85c Sundays. Str. Wauketa leaves at 2:30 p. m. meeting the Tashmoo at Tashmoo Park for the return trip.



Wharf — Foot of Griswold St.

Phone Main 3832



WOODWARD AVENUE, MAJESTIC BUILDING
From Fort Street West



Palatial steamers ply between Detroit and Belle Isle. Ride all day on these steamers.

The Detroit River

The wonderful Detroit River never goes on a rampage. It remains throughout the year at just about the same level and is as safe as a mill pond. The finest fleet of passenger steamers on fresh water in the world hail from this port. As an evidence that they are popular, it is only necessary to state that during the last season they accommodated more than 12,000,000 passengers, three times as many as sailed from all other Great Lake ports combined—all this without the loss of a single life.



The Woman's Exchange

23 Adams Avenue East

Just Across the Park
from Hotels

Statler and Tuller

Our Old English Tea Room

Appeals to Men and Women who
appreciate Home Cooked Food
served in delightful surroundings

Unusual Gifts

Art Needlework

Lingerie and

Children's Wear



SCENE ON BEAUTIFUL BELLE ISLE

From this Casino one may view the magnificent panorama of constantly passing steamships and large steel freighters carrying the commerce of a mighty Nation—and just beyond Canada, whose international boundary line has been almost obliterated in our common cause.

Take the Entire Family to the

BOARD WALK

to visit the
COLISEUM

25 Amusements for 25c

More fun in one evening
than at any other spot on
earth.



SCENE ON BOARD WALK

TWO BIG ADJOINING ATTRACTIONS
THRILLING! SENSATIONAL!

MOUNTAIN RIDE

A Mile Every Minute



THE MOUNTAIN RIDE

DERBY RACER

Over the Hills and Dales of
Michigan



THE DERBY RACER

TAKE JEFFERSON CARS TO BELLE ISLE BRIDGE



DAVID WHITNEY BUILDING
Woodward and Grand Circus Park

FOOTWEAR

for MEN *and* WOMEN

NETTLETON,
GARSIDE
*and our
own makes*

The boots you want are here

YE BOOTERYE
ROGERS SHOE CO.

T. J. JACKSON, Mgr.

DAVID WHITNEY BLDG.

Pack - Wolin Shop

76 Washington Blvd.

(Near Hotel Statler)



We are showing delightfully
new modes in—

*Suits, Tailored Frocks,
Gowns and Hats*

An Alluring Collection to Choose From

Clubs

BIRCH HILL COUNTRY CLUB.....	Michigan Avenue
BLOOMFIELD HILLS GOLF CLUB.....	Adjacent to Birmingham
BROOKLANDS GOLF AND COUNTRY CLUB.....	Rochester Road
COUNTRY CLUB.....	Grosse Pointe, out Jefferson Avenue East
COUNTRY CLUB OF BLOOMFIELD HILLS.....	North Woodward
DETROIT ATHLETIC CLUB.....	Cor. Madison and John R Street
DETROIT AUTOMOBILE CLUB.....	Hotel Pontchartrain
DETROIT BOAT CLUB.....	Belle Isle Park
DETROIT CLUB.....	Cass and Fort West
DETROIT GOLF CLUB.....	Palmer Park, out Woodward Avenue
DETROIT YACHT CLUB.....	Belle Isle Park
ELKS TEMPLE.....	Lafayette and Cass Avenue
KNIGHTS OF COLUMBUS.....	Woodward and Hancock Avenues
KNIGHTS OF MACCABEES.....	1021 Woodward Avenue
LOYAL ORDER OF MOOSE.....	40 East Congress Street
MASONIC TEMPLE.....	First and Lafayette
MEADOW BROOK GOLF CLUB.....	Out Grand River Avenue
MISS DETROIT POWER BOAT ASSOCIATION.....	821 Ford Building
MT. CLEMENS GOLF CLUB.....	At Mt. Clemens, Mich.
OAKLAND HILLS GOLF CLUB . . . 3½ Miles West of Birmingham on	Maple Road
OLD COLONY CLUB.....	Hotel Pontchartrain
RED RUN GOLF CLUB OF ROYAL OAK.....	North Woodward
ST. ANDREWS SOCIETY.....	109 East Congress Street
UNIVERSITY CLUB.....	Jefferson Avenue and Russell Street



BOOK BUILDING, WASHINGTON BOULEVARD

“One of the most unusual shops in America”



Hundreds of quaint original gifts to
take home to children or grown ups.

BLEAZBY SHOP OF GIFTS

9 East Adams Ave.

Grand Circus Park

Public Buildings

CITY HALL.....	Woodward and Michigan
ART MUSEUM.....	Cor. Jefferson and Hastings
LIGHT GUARD ARMORY.....	Larned and Brush
WAYNE COUNTY BUILDING.....	Cadillac Square and Randolph Street
BOARD OF COMMERCE.....	Lafayette and Wayne Streets
PUBLIC LIBRARY.....	Farmer and Gratiot Avenue
POST OFFICE.....	Fort, Shelby and Wayne
RECREATION BUILDING.....	Lafayette and Shelby

Interesting Automobile Drives

GRAND BOULEVARD—Delightful drive around the City of Detroit may be reached by driving out Lafayette Boulevard, Woodward or Jefferson Avenues.

BELLE ISLE—Drive out Jefferson Avenue to Grand Boulevard.

WATER WORKS PARK—Drive out Jefferson Avenue.

MOUNT CLEMENS—Take Lake Shore Drive.

FORT WAYNE—United States army post, located on river just below Detroit; reached by city cars.

GROSSE POINTE FARMS—Ten miles from the city, a most beautiful suburb.

BLOOMFIELD HILLS—Is reached via Woodward Avenue, passing the State Fair Grounds.

PALMER PARK—Drive out Woodward Avenue.



CONCRETE ROAD SCENE OUT OF DETROIT

Color banded poles to guide motorists

The Trolley Way to Summer Resorts Around Detroit

Radiating from this great vacation city are the Detroit United Lines, electric railroad with high speed trains serving not alone the country homes, but many cities as well. Interurban cars leave station, Jefferson and Bates.

MOUNT CLEMENS—Year round health and pleasure resort, just twenty miles from Detroit and near Lake St. Clair; reached by two trolley lines of D. U. R. Good auto roads.

ANN ARBOR—The home of the University of Michigan, forty miles from Detroit; reached by interurban cars. Good auto roads.

PONTIAC AND THE OAKLAND COUNTY LAKE REGION—Dozens of good hotels and hundreds of cottages near the shores of fine lakes. Two hours from Detroit by two trolley lines. Fine auto roads.



207-209-211 Woodward Ave.
At Grand River

WRIGHT, KAY & CO. DETROIT

SILVERWARE
DIAMONDS WATCHES
CLOCKS

SUPERB IN QUALITY
MODERATE IN PRICE

Dependable for over 57 years

MONROE PIERS—An ideal summer place midway between Detroit and Toledo, and overlooking Lake Erie; fishing, bathing, boating, etc. Reached by electric lines. Motor boats. Auto roads.

CASS LAKE—Adjacent to Pontiac, beautiful ride among the hills and lakes; take Orchard Lake or Pontiac interurban car half hourly.

ELIZABETH LAKE—Adjacent to Pontiac. Fine fishing and boating. Interurban car half hourly.

GROSSE ILE—Opposite Wyandotte, an island of beautiful homes in lower Detroit River, nine miles long, overlooking the famous Livingstone Channel. Reached by interurban car or by automobile by bridge from Trenton.

There are over 360 lakes in Oakland County. Many are reached by the Detroit United Lines, and one of the most scenic routes adjacent to Detroit is the Detroit United Lines along Lake St. Clair and the St. Clair River.

Trolley cars to Jackson, Battle Creek and Kalamazoo, where connection is made for Grand Rapids, Grand Haven, Muskegon and Chicago.

TAYLOR'S
223 Woodward Ave.

—“The smart shop of Detroit”

Exclusive Fashions

IN

COATS - SUITS - GOWNS - BLOUSES

(If it comes from Taylor's it must be good)



KRESGE BUILDING

Location of Depots, Docks, Public Buildings and Hotels

Public Buildings

- 13—City Hall
- 19—County Building
- 23—Detroit Athletic Club
- 25—Detroit Board of Commerce
- 40—Elks Temple
- 14—Knights of Columbus Hall
- 12—Light Guard Armory
- 11—Masonic Temple
- 18—Post Office
- 21—Y. M. C. A.
- Z—Arcadia Hall

Leading Hotels

- | | | |
|----------------|-----------------|-----------------|
| B—Burns | I—Morgan House | P—Statler |
| C—Cadillac | J—Normandie | Q—Wayne |
| D—Charlevoix | K—Norton | R—Franklin |
| E—Henry Clay | L—Oriental | T—Imperial |
| F—Griswold | M—Pontchartrain | U—Addison |
| G—Library Park | N—Ste. Claire | V—Berghoff |
| | O—Tuller | Y—Madison-Lenox |
| | | 11—Fort Shelby |

Depots

Mich. Ave. M. C.
L. S. & M. S. R. R.

- 1—Interurban. All suburban cars
- 3—Union Station: Wabash
Pere Marquette
Canadian Pacific
B. & O. R. R.
- 4—Brush Street: Grand Trunk

Docks

- 4—Northern Navigation Co.
- 6—White Star Line
To Toledo
Sugar Island
The Flats
Port Huron
- 7—Str. Put-in Bay
To Put-in-Bay
Sandusky and
Cedar Point
- 8—D. & C. Nav. Co.
To Buffalo
Cleveland
Toledo
Mackinac and
Way Ports
- 9—To Bob-Lo
- 10—Detroit & Windsor Ferry Co. to Belle Isle.
Foot of Woodward Ave.
To Windsor



Population

With a population of 925,000, Detroit is the fourth city in the United States, and its phenomenal growth within the last ten years has been the marvel of American cities. The metropolitan district within a ten-mile radius of the City Hall, has a population of 1,000,000. In 1900, Detroit had a population of 285,704. In 1910, 462,676. In 1915, 673,498. In 1916, 734,562. In 1918, 925,000.

Diamonds—

Gems of sparkling fire in exclusive mountings of green gold and platinum. A reputation of over a quarter of a century stands back of every stone.

Satisfaction Assured
in Quality and Price

Hugh Connolly & Son
State at Griswold
One Block from Woodward

Museum of Art

The Detroit Museum of Art is located at the corner of Jefferson and Hastings Street. From the city hall take Jefferson cars going south on Griswold Street, and after turning onto Jefferson get off at Hastings (seven blocks). Or it is within 15 minutes' walk of the City Hall. The building is open to the public and has a fine exhibition of original paintings, statuary, etc.

Grosse Pointe

A beautiful residential suburb reached by motor or street car straight out Jefferson Avenue East about eight miles. This suburb skirts along Lake St. Clair and has the finest private grounds and costliest mansions to be found around Detroit.

PENNINGTON BLOUSE SHOP

25 John R. Street

Cherry 3168

BLOUSES THAT ARE DIFFERENT

Georgetta Crepe Blouses in all the dainty shades, flesh and white, also beautifully beaded hand embroidered, filet lace smart high necks, the collarless blouse and slip on—**\$5.00, 6.75, 7.95, 8.75, 9.95, 12.00, 15.00 up.**

Pussy Willow Crepe de Chene and Satin Blouses in good looking tucked bosom effects, very new—**\$5.00, 6.75, 8.75, 10.00.**

Voile Blouses—**Prices** range from **\$2.98 to \$12.00.**

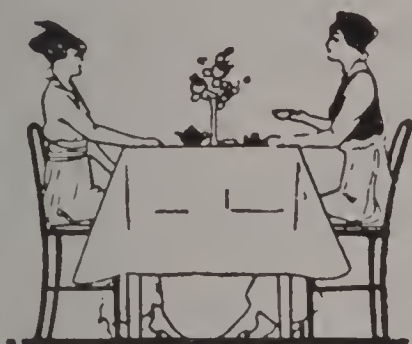
LINGERIE, NECKWEAR AND HANDKERCHIEFS



VISITORS CLUB—RECREATION BUILDING

88 Regulation Tournament Bowling Alleys, 103 Billiard Tables, 3 styles, Restaurants, Barber Shop, Cigar Stores, Soda Fountains, Billiard and Bowling Theatres, Rest Rooms and Lavatories for Men and Women, Shower Baths, Locker Rooms, Public Lounge, Check Rooms, Etc.

EAT, SMOKE, SHAVE, REST AND PLAY. YOUR CLUB—
NO DUES—VISITORS WELCOME.



ESTABLISHED 1878

TOURISTS cannot be too careful about food in traveling. We insure to our patrons a quality above criticism—a quality we have maintained for forty years—a quality which has made our reputation.

Tourists and Shoppers appreciate our location in the heart of the hotel and shopping district.

We manufacture everything we serve. Our Ice Cream has a wide reputation for superior quality.

HAIR'S

Restaurant and Tea Room

HOURS

7:30 A. M.

to
7:30 P. M.

258 Woodward Ave.

Detroit



FORD BUILDING

FIRST AND OLD DETROIT NATIONAL BANK

MEMBER FEDERAL RESERVE BANK

For well over half a century, this Bank has been a vital factor in the development of the lake region. A constructive policy, guided by a directorate of successful business men and carried out by an operating personnel of trained bankers, is responsible for its dominance.

Convenient Downtown Motion Picture Theatres

MADISON—Corner Witherell and Broadway. Go north on Woodward from City Hall four blocks to Grand Circus Park. Turn east (right) one short block on Witherell. Across the park from Statler and Tuller hotels.

WASHINGTON—Corner Washington and Clifford. Go north on Woodward three blocks to Clifford, turn west (left) two blocks to Washington Boulevard. Theatre on west side. Another way is to go west from City Hall on Michigan Avenue three blocks to Washington, turn north (right) three blocks to Clifford—a few steps from Statler and Tuller hotels.

LIBERTY—Corner Farmer and Bates Streets. Walk on Monroe one block from City Hall to Farmer, turn right one block.

ADAMS—Go north five blocks on Woodward, turn left Adams Avenue west. Opposite Hotels Statler and Tuller.

BROADWAY STRAND—Broadway, near Gratiot Avenue. From City Hall one block north to Gratiot, turn east (right) three blocks to Broadway.

MAJESTIC—Woodward and Willis Avenues. Take Woodward Avenue car going north. Get off at Willis Avenue. About one and one-half miles from City Hall.

COLONIAL—Woodward Avenue and Sibley. Take Woodward car going north—seven blocks above Grand Circus Park.

For theatres see page 28.



American League Baseball

Professional baseball is played at Navin Field, corner of Michigan and Trumbull Avenues, one mile west of Woodward straight out Michigan Avenue. Michigan cars going west at Woodward and Michigan pass the ball park; also Trumbull cars running north on Griswold at rear of City Hall.

Game Schedules

April 24, 25, 26, 27, 28 with Cleveland.

May 2, 3, 4, 5 with Chicago.

May 6, 7, 8 with St. Louis.

May 30, 30, 31 with St. Louis.

June 1, 2, 3, 4 with Boston.

June 5, 6, 7, 8, 9 with Washington.

June 10, 11, 12, 13 with Philadelphia.

June 14, 15, 16, 17 with New York.

June 21, 22, 23 with St. Louis.

June 24, 25, 26, 27 with Chicago.

July 25, 26, 27, 28 with Philadelphia.

July 29, 30, 31 and August 1 with New York.

August 2, 3, 4, 5 with Washington

August 6, 7, 8 with Boston.

September 2, 2, 3 with Chicago.

September 4, 5, 6 with Cleveland.

September 14, 15, 16, 17 with Boston.

September 19, 21 with Washington.

September 22, 24, 25 with New York.

September 26, 27, 28 with Philadelphia.

September 29, 30 with St. Louis.

October 3, 5, 6 with Cleveland.

Additional information from Chas. F. Navin, Secy., care Navin Park, Detroit.



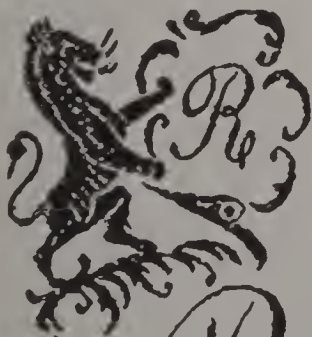
Copyright L. S. Glover, Detroit

MICHIGAN CENTRAL STATION



Y. M. C. A. BUILDING
One of the largest in the country

Furs of Quality



Ross Fur Co.
DETROIT MICH.

Across the Park
from Hotels

STATLER
AND
TULLER

*Furs, Coats
Coatee*

REMODELING

Tel. Cherry 1493

14 Adams Ave. W.

Facts about Detroit

Detroit's Area—80.86 square miles.

Population 1900 (U. S. census) 285,704. Population 1910 (U. S. census) 465,766. Population 1918, 925,000.

Fourth in population in U. S. (U. S. selective draft est.)

Assessed property value, 1917—\$1,174,517,900.00.

Taxes per \$1000—\$18.50.

Value of Building Operations—1917, \$39,676,690.00.

Bank Clearings, 1917, \$2,749,173,375.00.

Commercial Deposits, \$203,965,874.00.

Savings Deposits, 1917, \$138,347,780.00. Detroit has 123 banks.

Owens its own water works system and electric light plant, total valuation of \$17,700,000.00.

Detroit has 38 public parks. Parks and Boulevards valued \$31,041,800.00. Park and Boulevard acreage, 1,239,319.

Belle Isle is considered the most beautiful island in the world.

Finest fleet of excursion steamers in the world hail from Detroit.

Carried 12,000,000 passengers, without the loss of a single life.

Detroit has eleven miles of river frontage.

Hotel investments aggregate \$41,000,000.00.

In Detroit, industrial peace is less disturbed than in any other manufacturing city in the world.

In one year, Detroit produced approximately 1,252,500 automobiles, market value \$847,720,000. Motor trucks 23,229, value \$45,462,000. Jobbers do \$80,000,000 of business annually.

Detroit's growth since 1900 is 300%.

Detroit has 131 public and 75 private schools.

Public school teachers, 2,939. Public school pupils, 164,000.

Educational appropriation, \$9,500,000.00.



CAMPUS MARTIUS—THE
This Broad, Open Space is Three Blocks from the Majestic Detroit

Facts about Detroit—Continued

Library stations, 26; branches, 12.

Annual appropriation, fire department, \$2,567,665.37.

Annual appropriation, police department, \$2,975,000.00.

Theatres, 17. Moving picture houses, 128.

Street car mileage, 293. Miles of paved streets, 593.

City hospitals, 12. Churches (all denominations), 311.

Value manufacturing products about \$3,000,000 daily.

1,000,000 cigars made daily.

Of 13 large cities in the U. S. only one has a lower per capita debt than Detroit.

Has twelve Foreign Consular Service Bureaus.

Internal Revenue receipts, \$23,340,717.00.

Post Office Receipts, 1917, \$4,264,152.00.

Postal Savings, 1917, \$4,285,285.00.

Exports valued, \$290,504,700.00.

Tonnage, Detroit River, 95,243,119.

Vessels, Detroit River, 33,061.

Value of tonnage carried, \$1,269,590,776.00.

Material used daily in consumption of manufactured products, \$1,800,000.00.

Total salaries and wages paid employes per day, \$775,000.00.

Total number of employes in factories and factory offices is 250,000.

In fifteen years, Detroit has jumped from 16th to 4th city industrially.

Detroit has about 2,700 manufacturing plants; 30 automobile manufacturing plants and 120 automobile accessory plants.



"HUB" OF DETROIT
at River, and Is the Point from which All Streets Radiate

CHERRY
1 5 8

SMART CLOTHES
The W. E.
CANTON CO.

AT THE
STATLER

105 WASHINGTON BLVD.

A Shop of

Men's, Young Men's and Boys'
Wearing Apparel

Clothes, Haberdashery and Headwear
of Quality

AT THE STATLER ON THE BOULEVARD

Amusements

DETROIT'S CONEY ISLAND—Is located on Jefferson Avenue just east of the Belle Isle bridge approach. Here are Mountain Rides, Submarine Dips, the "Board Walk" and many similar forms of entertainment.



SEEING DETROIT AUTOS

Detroit's largest and best equipped company. Packard cars used exclusively. We call at all hotels, leaving from 83 Woodward Avenue every half hour. Phones: Main 1029—Cadillac 1029.

DIETSCH SIGHT SEEING COMPANY, 81 and 83 Woodward Ave.



DETROIT ATHLETIC CLUB
Largest and Finest Equipped in the Country

Exclusive Styles in Women's Wear

Furs

Detroit's
largest
and best
stocks.

Suits—Coats—Dresses— Skirts—Waists

A splendid collection of the most charming
new modes.

Very convenient to Statler and Tuller Hotels.

The Rollins Co
SUCCESSOR TO
The House of George

259 Woodward Ave.

Leading Theatres

TEMPLE THEATRE—One of Detroit's best theatres; High Class Keith Vaudeville. Conventions desiring block of seats should give advance notice. Located on west side of Monroe Avenue next to corner of Campus Martius.

DETROIT OPERA HOUSE—North side of Campus Martius. Diagonally opposite City Hall.

GARRICK THEATRE—On east side of Griswold Street, one-half block north of Michigan. Walk on Michigan to Griswold and turn north (right).

LYCEUM THEATRE—Corner Randolph and Lafayette Boulevard East. Walk up Monroe Avenue (running northeast opposite City Hall) to Library Avenue (two blocks). Turn right one block. Lyceum across the street.

ORPHEUM THEATRE—Corner Lafayette and Shelby. From Woodward Avenue take Michigan Avenue to Griswold, bearing left into Lafayette one block to Shelby.

MILES THEATRE—Griswold Street, north of State. From Woodward at City Hall walk one block west on Michigan to Griswold, turn north (right) 1½ blocks. Miles Theatre faces Capitol Square Park.

GAYETY THEATRE—(Burlesque), two blocks from City Hall, on Cadillac Square.

CADILLAC THEATRE—(Burlesque), two blocks from City Hall on Michigan Avenue, opposite Hotel Cadillac.

REGENT—(Vaudeville), Woodward Avenue at the Boulevard. Take Woodward car going north, get off at Grand Boulevard.

Leading Motion Picture Houses—see page 21.

*Positively the most reasonable place
in the Middle West*

For good meals and what goes with them

STRIKERS CAFE

Lafayette and Shelby Streets

OPPOSITE ORPHEUM THEATRE



BOARD OF COMMERCE
Lafayette Boulevard and Wayne Street

“The Complete Bookstore”

Books, Stationery, Engraving
Cards, Art Novelties, Pictures

John V. Sheehan and Company

262 Woodward Avenue

Largest Exclusive Newspaper Building

New Plant of the Detroit News

The most perfectly equipped and one of the largest and most attractive newspaper buildings in the world—corner Lafayette Boulevard and Second Avenue. Hours for Visitors 9:30 and 11:00 A. M., 1:30 and 3:00 P. M. except Sundays.



MOUNT CLEMENS—THE BATH CITY

While Mount Clemens is chiefly a health resort, few places offer the same attractions to summer visitors in search of good times. People who wish to combine the health-building effects of the baths with a vacation will find every opportunity for Boating, Fishing, Automobiling and Golf.

Mount Clemens—The Bath City

It is but a fifty-minute trolley ride from the center of Detroit to the Rest and Health capital of America. Mount Clemens, "The Bath City," is world-famed for its mineral baths, which are especially noted for the treatment of Rheumatism and kindred disorders.

Thousands of people from all over the world take these baths, many of whom come for the tonic effects of this wonderful water.

Ten Bath Houses

Mount Clemens has ten bath houses, which are among the finest and best equipped in the world. All use the same mineral water, which is pumped from deep wells. Expert attendants, men and women, are in charge, and every bather is given a massage in the tub.

Hotels

Mount Clemens has many hotels, some of them ranking among the finest in the middle west. There are also many moderate-priced hotels, and the visitor may have accommodations as luxurious or reasonable as taste and purse dictate.

Golf

The nine-hole golf course is considered one of the best to be found anywhere, and arrangements may be made by visitors for playing at any of the leading hotels.

Bring Your Automobile

Some of the best automobile roads in the whole country are near Mount Clemens. The Shore Drive to Detroit is the admiration of all visitors. This perfect roadway runs for twenty-five miles past one continuous summer resort.

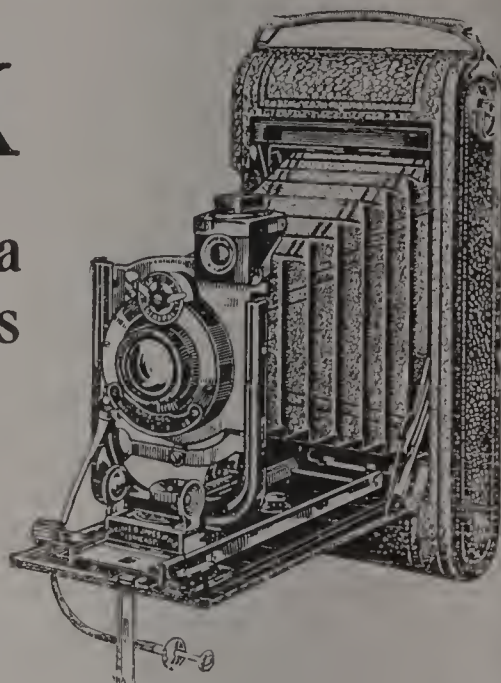
Write for Literature

Write for literature explaining all about the Mount Clemens Baths. Address Business Men's Association, Mount Clemens, Michigan.

A Kodak

Will enable you to keep a picture record of Detroit's points of interest

And you'll find just the camera you want at one of our four big downtown stores.



Kodaks at \$7.50 to \$91.50 Rexo Cameras at \$2 to \$85
Brownies at \$1.25 to \$15 Graflex Cameras at from \$60 up
Let us develop and print your films—best work in the city

WELCOME! VISITORS!

Any of our stores will be glad to give you assistance in finding your way about town or rendering such other service as is within their power.

OUR RESTAURANT

In the Basement of our store in the Kresge Building (opposite Hotel Tuller), caters to refined patronage and offers a cuisine equal to any hotel's in quality at much less than hotel prices.

Breakfast and Luncheon Serve-Self.
Dinner a la Carte with service at tables

CUNNINGHAM'S DRUG STORES

Kresge Building, Opp. Hotel Tuller
219 Woodward Ave. just North of Gd. River
155 Woodward Ave. just South of State St.
110 Woodward Ave. Cor. Congress St.

Restaurant In Basement of Kresge Building Opp. Hotel Tuller
Cor. Adams and Park

How to Reach Principal Depots and Docks from City Hall

MICHIGAN CENTRAL DEPOT—Take car marked "Depot" at corner of Griswold and Michigan. By auto drive out Lafayette Boulevard to 15th and turn north (right) to depot.

UNION DEPOT—Take Fort car going west. Get off at Third Street. Same route by auto.

BRUSH STREET DEPOT—Take Hamilton car going south on Woodward. By auto drive south on Woodward to Jefferson, turn east (left) three blocks to Brush, turn south (right) down grade to depot.

DETROIT & CLEVELAND NAVIGATION CO. DOCK—Woodward car marked "Through" going south (toward river). This car turns west on Jefferson to Third Street. Walk one block to river. Auto route same.

ASHLEY & DUSTIN DOCK—Woodward car marked "Through" going south (toward river). Car turns west on Jefferson. Leave car corner Jefferson and First and walk south one block to river. Same route by auto.

WINDSOR FERRY—Take Woodward car marked "River" or cars marked "Hamilton" going south on Woodward. This dock is scarcely over five minutes' walk from City Hall, straight down Woodward.

WHITE STAR LINE—Port Huron and Toledo boats. Take Woodward car going south on Woodward, get off at corner Jefferson and Griswold and walk south down grade to river. Dock is about five minutes' walk from City Hall.

ANCHOR LINE—Foot of Cass Street. Same directions as Ashley & Dustin dock, except leave car at Cass instead of First Street.

NORTHERN NAVIGATION CO.—Same directions as Brush Street Depot. At depot walk one block south to dock.

DETROIT UNITED RY. INTERURBAN DEPOT—Corner Jefferson and Bates. Take Woodward or Hamilton car south to Jefferson. Walk one block east (left). Five minutes' walk from City Hall.



RUSHMERE CLUB

St. Clair Flats



Hotel Victory

One of the most attractive and conveniently located of the Lake Resorts is Put-in-Bay, famous in Song and Story as the Scene of the battle of Lake Erie and Commodore Perry's victory in 1813.

The principal hotel on this Island is the Hotel Victory, long and favorably known to the tourist. It contains 600 rooms, and is being re-opened this year under new management, and over one hundred thousand dollars is being spent on improvements.

It is reached by boat from Detroit, 60 miles; Cleveland, 60 miles; Toledo, 40 miles and Sandusky, 20 miles. Many business men in the Central States arrange to have their families stay at the Hotel Victory during the Summer, the convenience of location enabling them to give attention to business and still spend the week end with "the folks."

For reservations write Robt. Sturgeon, Mgr., Put-in-Bay, Ohio.

Boat Trips

WHITE STAR LINE—At foot of Griswold Street to Algonac, St. Clair Flats, Marine City, St. Clair, Sarnia and Port Huron. Round trip takes 1 day. Also White Star boats Detroit to Toledo, traversing Detroit River and Lake Erie.

D. & C. NAVIGATION CO.—Boats leave every evening for Buffalo and another line for Cleveland. Also boats regularly to Mackinac Island, 300 miles away, at head of Lake Huron. Dock foot of Third Street.

ASHLEY & DUSTIN—Steamers Frank E. Kirby and Put-in-Bay leave daily for Put-in-Bay in Lake Erie, near Sandusky, also Cedar Point. Round trip requires a day and is very interesting; also connections with steamer to Cleveland. Dock foot of First Street.

NORTHERN NAVIGATION CO.—Water trips requiring several days can be had via Northern Navigation Co. to Sarnia, Sault Ste. Marie, Port Arthur, Fort William and Duluth.

ANCHOR LINE—Foot of First Street. Steamers for Duluth.

BELLE ISLE BOATS—For short trips the Belle Isle Boats are very comfortable and run with convenient frequency with very low fares. Riding tickets on these boats permit the passenger to remain on as long as desired, and many people spend a morning or afternoon riding up and down river on the Belle Isle boats enjoying the fine orchestra music on board.

BOB-LO ISLAND—A trip to Bob-Lo Island, at the mouth of the Detroit River, no visitor should miss. Steamers foot of Bates Street.



LIVINGSTONE CHANNEL—Mouth of Detroit River

This is the greatest artificially prepared marine highway in the world, cost United States government \$10,000,000.00.

DAVID WHITNEY
BUILDINGHOTEL
STATLERHOTEL
TULLERKRESGE
BUILDING*On the West Side of Grand Circus Park*

A Dr. Reed Shoe Store—272 Woodward Ave.
—Across from the David Whitney Building

The Shoe of the Hour

Combining trim, voguish military lines with foot ease
and comfort. We have your size and particular model.

Dr. A. Reed Cushion Shoe

272 Woodward Avenue

Opposite David Whitney Bldg.

Gass-Whitney
MANAGEMENT

To avoid imitation look
for the maker's name

J. P. Smith Shoe Co.
Makers of Men's
Shoes

John Ebberts Shoe Co.
Makers of Women's
Shoes



BANKING

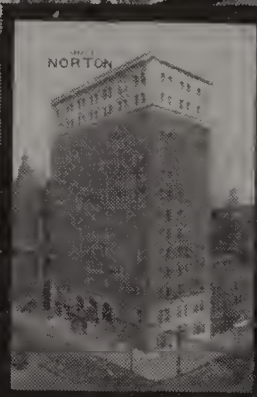


Visitors to Detroit, particularly those who expect to locate, may be interested to know that this Bank is well equipped to give GOOD BANKING SERVICE and pays 3% interest on accounts from date of deposit to date of withdrawal.



HIGHLAND PARK STATE
BANK OF DETROIT

43 Fort Street West



Hotels of Detroit

This city is noted for its many magnificent hotels, and it is estimated that there is an investment of almost \$41,000,000 in hotel property in Detroit.

In addition to those shown on opposite page, Detroit has 100 hotels and is better provided with such accommodations than any city of its size in the country.

It is the established rule of the hotels to maintain a fair rate and not increase the prices during the tourist season.

HOTEL ADDISON—Woodward and Charlotte Aves. Rates \$1.50 up. Briggs & Freud, Mgrs.

AMERICAN HOUSE—296 Gratiot Ave. Gentlemen only. Rates \$1.00 up. W. H. Westphal, Mgr.

BERGHOFF HOTEL—W. D. C. Moebs & Co., Proprs. Opposite Temple Theatre. Rates \$1.25 up.

BURNS HOTEL—Cadillac Square and Bates St. A. James Singelyn, Propr. Rates \$1.00 up.

HOTEL BROOKINS—17 Sproat St. R. B. Brittain, Propr. Rates, \$1.00 up.

HOTEL CADILLAC—Michigan Ave. and Washington Blvd. Rates \$1.50 up. European plan. R. A. Carson, Mgr.

HOTEL CHARLEVOIX—Park and Elizabeth Sts. Rates \$1.50 up; Suites. H. M. Kellogg, Mgr.

HOTEL ELDORADO—32 Winder St. Rates \$1.50 up. Frank D. Hovey, Mgr.

HOTEL FRANKLIN—Larned and Bates Sts. Rates \$1.00 up. H. H. James & Son, Proprs.

FORT SHELBY HOTEL—Lafayette Blvd. and First St. Rates \$1.50 up. John C. Thomson, Mgr.

HOTEL GRISWOLD—Grand River and Griswold St. Rates \$1.50 up. Fred Postal, Propr.

HENRY CLAY HOTEL—Center and John R Sts., next to Broadway. Frank E. Ellsworth, Propr.

INTERURBAN HOTEL—S. W. Cor. Woodward and Jefferson. Rates \$1.00 up. European plan. Chas. E. Monroe, Mgr.

HOTEL LINCOLN—Grand River and Center St. Rates \$1.00 up. H. C. Cooper, Mgr.

LIBRARY PARK HOTEL—A. E. Hamilton, Mgr. Library Ave., near Gratiot. Rates \$1.00 to \$2.00 per day.

HOTEL METROPOLE—Woodward Ave., opposite City Hall.

HOTEL MADISON & LENOX—Madison and Grand River Ave., East. Rates \$1.00 up. Ernest H. Piper, Mgr.

HOTEL MORGAN—Cass and Bagley Aves. European plan. Rates \$1.00 up. Frank T. Merrill, Propr.

HOTEL NORTON—Cor. Griswold and Jefferson. Rates \$1.00 and up. Charles W. Norton, Propr.

HOTEL NORMANDIE—East Congress St., near Woodward. European plan. \$1.00 up. George Fulwell, Propr., R. C. Pinkerton, Mgr.

NEW IMPERIAL HOTEL—62-64 West Columbia St. \$1.00 up, \$4.00 week up. Frank A. Booth, Propr.

ORIENTAL HOTEL—60-64 Library Ave. \$1.00 up. Turkish and Electric Baths. Theodore C. Capen, Mgr.

HOTEL PONTCHARTRAIN—Woodward and Cadillac Square. Rates \$2.00 per day and up. Frank W. Harriman, Mgr. Dir.

HOTEL STATLER—Grand Circus Park. Rates \$2.00 up. Harry L. Zeese, Mgr.

HOTEL STE. CLAIRE—James D. Burns and H. J. Guthard, Proprs. Cor. of Randolph and Monroe. \$1.25 up.

HOTEL TULLER—Grand Circus Park. Rates \$1.50 up, single; \$3.00 double. L. W. Tuller, Propr.

WAYNE HOTEL and GARDENS—Third and Jefferson. European plan. \$1.00 per day and up. James R. Hayes, Propr.



FORD MOTOR COMPANY

This great plant turns out a complete motor car every twenty-nine seconds, and in conjunction with its branch factories, has a record of making 3866 cars in one day of eight hours. Between 29,000 and 42,000 men are regularly employed in this plant.

Diversified Industries

Detroit is one of the few cities of the world that is known as a city of beauty and at the same time as one of industry. The combination of these features has resulted in the development of the expression "Detroit The Dynamic." While Detroit is by no means dependent in its industrial activity upon the manufacture of the automobile, which comprises about 48% of Detroit's industrial life, yet this is probably the most interesting manufactured product in the world today.

It is estimated that Detroit and its immediate vicinity produce 85% of the automobiles manufactured in America and with thirty automobile manufacturers, one hundred and twenty automobile accessory plants, Detroit certainly has earned the title of "THE AUTOMOBILE CITY OF THE WORLD."

Thirty factories in this city are producers of motor cars and trucks. The few illustrated herein are leaders taken from the many. It is conservatively estimated that 1,000,000 cars were built in Detroit during the past year. The value of this immense output is something over \$650,000,000.

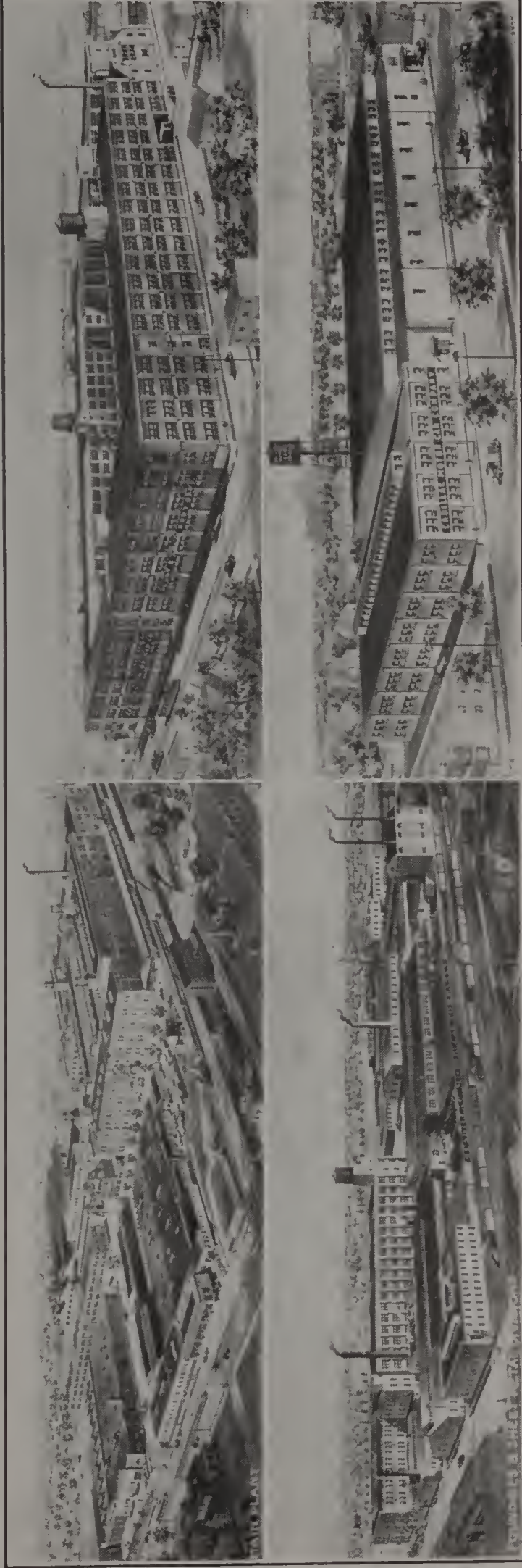
"Where smart hats originate"



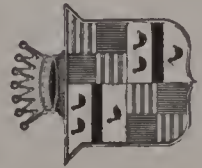
MILLINERY

11 ADAMS AVE. E.

Across the Park from Hotels Statler and Tuller

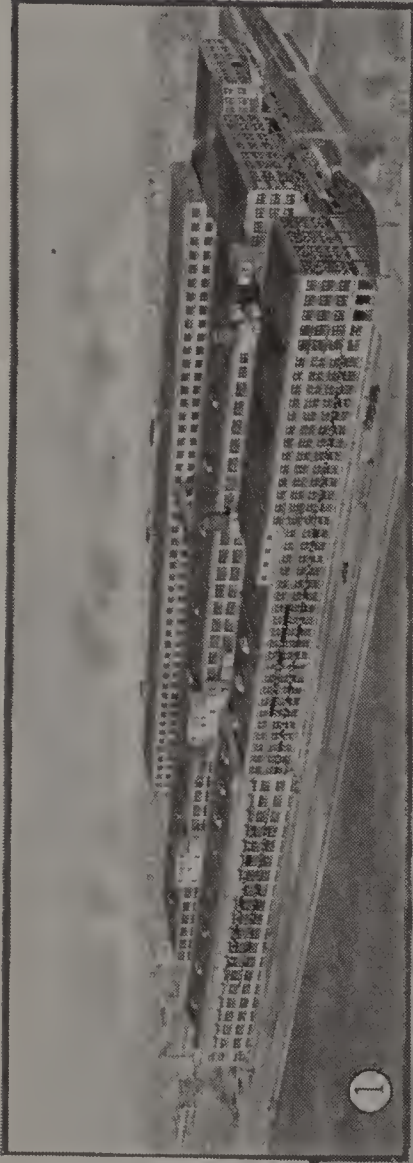


FOUR OF THE FIVE PLANTS OPERATED BY THE CADILLAC MOTOR CAR CO.



*Capital employed, more than \$10,000,000.00.
Value of cars produced more than 265 millions.
Area of plant more than 35 acres.*

*Number of employes more than 7,000.
Number of mechanical operations on current model car accurate to 1-1000 part of an inch—more than 1,000.*



It is estimated that more than 2,000,000 people in America are dependent upon the automobile industry for a livelihood. Four hundred and fifty factories, located in thirty-two different states are producing motor vehicles, and the most successful and best-known manufacturers are users of the Timken-Detroit Axles. Four



immense manufacturing plants, covering a total of 46 acres, are required to produce Timken-Detroit front and rear axles for passenger cars and front and worm-drive rear axles for commercial vehicles, making it the largest industry of its kind in the world.

THE TIMKEN-DETROIT AXLE CO.



THE DETROIT PLANT OF THE HUPP MOTOR CAR CORPORATION

This plant covers twelve acres of ground, and occupies 500,000 feet of floor space. The plant at Windsor, Ontario, takes care of Canadian business. At Jackson, Michigan, this company also owns what was formerly the American Gear & Manufacturing Company.



1918

SIXTIETH ANNIVERSARY

Sixty successful years have been devoted by Berry Brothers to the study of the manufacture of varnish. The sum of the knowledge thus gained is evidenced in the superior quality of our various products. This quality is a guaranty of beauty and permanence, and the Berry label is a safe guide for every user or buyer of varnish.

The specification of "Berry" products is a sure preliminary to a lasting and beautiful finish

BERRY BROTHERS

(INCORPORATED)
World's Largest Varnish Makers

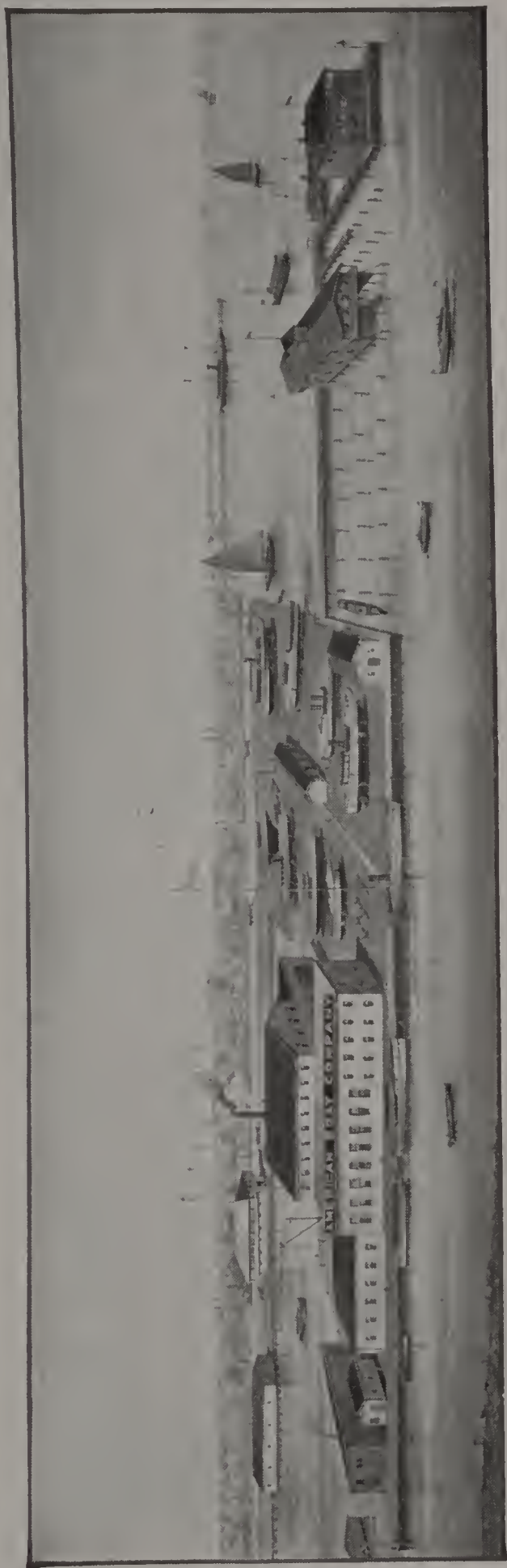
SAN FRANCISCO

DETROIT

WALKERVILLE, ONT.



1858



AMERICAN BOAT COMPANY

The largest and most modern equipped plant in the Middle West. We are prepared to build craft of the highest class up to 100 foot length. We have two marine ways, large storage yards and give prompt and careful attention to haul outs, repairs, rebuilding, outfitting and storage. A supply of our Famous "American Beauty," Yacht Tenders, Dinghies, Row and Fish Boats are carried in stock. Ask for Catalogue B-18.

Visiting Yachtsmen are invited to tie up at our docks. You are Always Welcome.



THE MORGAN & WRIGHT FACTORY

*Of the United States Tire Company, "One of Michigan's Greatest Manufacturing Plants." Individualized Tires
"Royal Cord," "Nobby" Tread, "Usco" Tread, "Chain" Tread, "Plain" Tread.*

Steam-Boat Fares and Schedules

River riding is one of the summer pastimes at Detroit, the finest fleet of excursion steamers on fresh water in the world, are here; hours and hours, up and down the river, just enjoying life, at a cost that is not greater than riding in a street car in your own city.

NOTE—A WAR TAX of 8% will be collected on all fares *over* 35c one way and 70c round trip.

	One Unlimited			Route	Steamers Leave			
	One Way	Day Excur.	Round Trip					
DETROIT to †PORT HURON	\$0.85	\$1.25	\$1.40	White Star Line	8:45 A. M.	2:30 P. M.		
Sarnia, Ont.85	1.25	1.40	" "	" "	" "	" "	" "
†TASHMOO PARK50	.70	.75	" "	" "	" "	" "	" "
Star Island50	.70	.75	" "	" "	" "	" "	" "
†ST. CLAIR FLATS50	.70	.75	" "	" "	" "	" "	" "
(Venice of America)								
Algonac50	.75	.80	" "	" "	" "	" "	" "
Pt. Lambton, Ont.60		1.10	" "	" "	" "	" "	" "
Marine City60		1.10	" "	" "	" "	" "	" "
St. Clair70		1.20	" "	" "	" "	" "	" "
TOLEDO, OHIO80	1.02	1.25	" "	8:30 A. M.	4:00 P. M.		
SUGAR ISLAND35	.40	.50	" "	" "	" "	" "	" "
PUT-IN-BAY70		Ashley & Dustin	9:00 A. M.			
Cedar Point or Sandusky		1.35		" "	" "	" "	" "	" "
Sandusky	1.10			" "	" "	" "	" "	" "
Steamer Frank E. Kirby, Sundays, Mondays, Tuesdays, Wednesdays and Thursdays at 8 A. M. Fridays and Saturdays at 5 P. M.								
Windsor, Ont.05		.10	Detroit, Belle Isle & Windsor Ferry Co.	Every 10 Minutes			
BELLE ISLE15		Every 20 Minutes			
BOB-LO40			8:45 A. M. 3:00 P. M.			
CLEVELAND, O.	2.50		4.50	D. & C. Nav. Co.	10:45 P. M.			
BUFFALO, N. Y.	4.00		7.00	" "	5:00 P. M.			

†Sundays Steamers leave 9:00 A. M., 2:00 P. M. and 2:30 P. M.

For Moonlight Excursions

See White Star Line, D. B. I. & W. and Ashley-Dustin Lines.



STEAMER "NORONIC" OF THE NORTHERN NAVIGATION COMPANY

Detroit Lunch, Inc., Cafeteria

Peter Smith Building, State and Griswold

A Most Satisfactory Place to Eat—Clean and Sanitary

FRESH AIR

NOT IN A BASEMENT

DAYLIGHT

A. B. C. NOVELTY CO.

Souvenirs, Toys, Novelties of All Kinds

Abalone Pearl, Mosiac and Goldstones

109 WOODWARD AVE.

Retail and Wholesale

Koehler Wall Paper House

Window Shades and Paints

176 Michigan Ave.

155-163 State St.

The Dime Bank Building Lunch Co.

Detroit's Most Popular Cafeteria

Club Breakfasts a Specialty

Serveself at Noon
10:30 - 3:30 P. M.

KARTSEN'S KAFETERIA

Detroit's favorite restaurant occupies the entire
second floor of the Woodward Building—
Corner Woodward and Clifford (Over Kresge's)

Good Food

Good Music

Popular Prices

King Ying Lo, Chinese Restaurant

16 Lafayette Blvd.

31 Michigan Ave.

Telephone Main 5972

Telephone—Table Service—Cherry 679—Cadillac 2696

CHOP SOY A SPECIALTY

HOMER GAM, Manager

DETROIT, MICH.



Sail the Waters of Two Nations

For health, diversity of scenes and fascinating interest—for comfort and absolute freedom from cares—you will find no trip to equal this

6 Day—1600 Mile Detroit-Duluth Cruise

—between Detroit, Sarnia, the "Soo," Port Arthur, Ft. William and Duluth—aboard the famous steel cruising line's "Noronic," "Hamonic" and "Huronc"—a route almost as long as from New York to Panama. Included in your voyage ticket are meals, berth, boulevard drive at Duluth, picnic to Kakabeka Falls, the North's Niagara—teas, dances, after-dance refreshments, etc. For information write

NORTHERN NAVIGATION CO. C. LEIDICH, 69 Fort St. W.
DETROIT, D. P. Agent

DETROIT REAL ESTATE

Has earned many a man a fortune—and it will earn many more. Below we show the location of our beautiful Vinsetta Park, containing every city improvement. The finest homesite anywhere around the city, and close to the Red Run Golf Club. Whether you are looking for a home or an investment, you will profit by availing yourself of our facilities—we have one of the largest and best equipped offices in Michigan.



73 - 75 GRISWOLD ST. **LAMBRECHT, KELLY & CO.** DETROIT, MICH.



LIBRARY OF CONGRESS



0 014 754 612 9



GRATIOT INN on the Lake at Port Huron

VACATION TIME

At the Gateway of the Upper Lakes

Port Huron, Michigan

The Atlantic City of the Great Lakes

For Full Particulars Address

Summer Resort Bureau CHAMBER OF COMMERCE
PORT HURON, MICHIGAN

Summer Homes

For Sale and to Rent at all the Beaches at Port Huron. Lake and River Property for Sale.

Edward F. Percival

1002 Military Street
Port Huron, Mich.

824 Ford Building
Detroit, Michigan