

STEIN, MANDELL & CO., Wholesale and Retail Dealers in Hardware,

WEEKLY CHAMPION.

SATURDAY, OCTOBER 13.

A Bit of Sarcasm.

The following is clipped from the Denver Tribune's report of the farewell address of Commissioner Gray, of Arizona, at the Denver Mining Exposition. It is the height of sublime sarcasm:

"Gentlemen, Arizona will always remember your kind and hospitable treatment of her commissioners. You received them with kindness, you treated them with uniform courtesy, you introduced them to your public institutions, especially your courts; you tried to make things interesting for them. I understand that you came very near contracting an attachment for them, and one of them is not yet quite sure whether you will contract one for the Arizona ores before he can get them out of town. You would not listen to the commissioners going away. You insisted that they should remain with you. For this they thank you, and the people of Arizona will thank you. When they want to buy mining machinery, and supplies, and goods, and when they want to sell bullion, and ores, and mines, they will remember how good you are, and how earnestly you take hold of the stranger within your gates, and how well you hold on to him. They will recollect these things, and on their way to Kansas City or Chicago they will arrange to cross Colorado in the night time, or go by the Iron Mountain road.

"I thank you, gentlemen, for the opportunity you have afforded me of expressing myself, for the generous applause with which my remarks have been greeted, and for the kind things which have been said and probably will be said of me hereafter by some of the Colorado papers, and I take my seat in the same frame of mind as was Byron's 'Cain'—without hope and without remorse."

Poisoned Arrows.

At a recent seance Soc. d'Anthrologie an interesting communication was received from Mr. W. J. Hoffman regarding the methods employed by the North American Indians to poison their arrow points.

The Comanches simply pierce the green shell of the "Spanish bayonet," or yucca augustifolia, with the points. The Apaches bruise up the heads of rattlesnakes with fragments of deer's liver, allow the mass to become putrid, then dip the arrow points and allow them to dry slowly. The Chinooks (Moquis of Arizona) irritate a rattlesnake until he bites himself, and then dip the point and a portion of the wood of the arrow into the blood of the reptile. A wound with one of these arrows generally proves fatal in three or four days, and its action is much more rapid if the stomach of the wounded person is empty at the time the injury is received.

Another poison is obtained by irritating bees, shaking the hive, and then killing them when in this state with small branches bunched together. The insects are crushed up in a mass with mortar and pestle, and the arrow points are dipped in the magma. It is probable that the active substance in this case consists in the formic acid contained in the bodies of the bees. This last preparation does not cause death, but induces long continued sickness.

Another very active but not fatal poison is obtained from red ants. It produces pain in the pharynx, considerable swelling of the part injured, and sometimes delirium. The patient remains feeble for a month.—Medical and Surgical Reporter.

Fire at Benson.

From the Benson Herald of the 20th ult., we learn of a disastrous fire which occurred at that place on the night of the 18th ult. The total loss is placed at \$75,000, with not more than \$25,000 insurance. The following are the losers and their insurance: Sisson, Crocker & Co.'s loss was about \$20,000, partially insured; J. Thede, \$500, no insurance; Sam Stanton, \$1,000, no insurance; George Bryant, \$2,000, insured for \$450; R. B. Stewart, \$5,000, insured for \$3,000; D. H. Swan, \$4,000, insured for \$3,000; Leitch Brothers, \$4,000, insured for \$500; Clark Brothers, \$2,000, no insurance; W. H. Small, \$1,000, no insurance; W. A. McAllister, \$4,000, no insurance; Hugo Rohn, \$3,000, no insurance; Baldwin, Finch & Meyer, being in a fire proof building, were only damaged about \$200 worth.

ILFELD & CO.,

WHOLESALE AND RETAIL DEALERS IN

General Merchandise,

ALBUQUERQUE, N. M.

ALLAN H. GRANT

DEALER IN

General Merchandise,  
Peach Springs and Hackberry.

GRAND CANON

Stage Line.

Careful and Experienced Drivers  
First Class Concord Coaches,  
Fine Roads, Good Stock and  
Quick Time.

Fare to the Canon, \$5.00.

New Hotel just completed and opened to the Public.  
Good Accommodations, reasonable prices.

YOUNG & FARLEE,

PROPRIETORS, PEACH SPRINGS.

S. BACA,

Wholesale Liquor Dealer.

SOLE AGENT FOR

VAL BLATZ'S PREMIUM EXPORT

MILWAUKEE BEER.

SOUTH SIDE RAILROAD AVE., ALBUQUERQUE.

CHAS. ZEIGER,

WHOLESALE DEALER IN

Liquors, Wines and Cigars

Largest and most Complete Stock  
in the Territory.

Orders Promptly Filled from any Part of Arizona or New Mexico.

AGENT FOR THE FAMOUS

Anheuser - Busch and Budweiser

KEG AND BOTTLED BEER.

Corner of First Street and Railroad Avenue;

ALBUQUERQUE, N. M.

Dr. S. A. Richmond & Co.'s

SAMARITAN CURES FITS.



NEVER FAILS. NERVINE

The only known specific remedy for Epileptic Fits. SAMARITAN NERVINE Cures Epileptic Fits, Hysteria, Convulsions, St. Vitus Dance, Vertigo, Hysterical Blindness, Aphasia, Paralysis, Hysterical Numbness, and all Nervous Diseases. This safe and reliable remedy cures every case of Nervous Disease in 10 to 15 days, and drives them away from the system. It is a powerful tonic, and restores the system to its normal state. It is a powerful tonic, and restores the system to its normal state.

SAMARITAN NERVINE Cures Epileptic Fits, Hysteria, Convulsions, St. Vitus Dance, Vertigo, Hysterical Blindness, Aphasia, Paralysis, Hysterical Numbness, and all Nervous Diseases. This safe and reliable remedy cures every case of Nervous Disease in 10 to 15 days, and drives them away from the system. It is a powerful tonic, and restores the system to its normal state.

SAMARITAN NERVINE Cures Epileptic Fits, Hysteria, Convulsions, St. Vitus Dance, Vertigo, Hysterical Blindness, Aphasia, Paralysis, Hysterical Numbness, and all Nervous Diseases. This safe and reliable remedy cures every case of Nervous Disease in 10 to 15 days, and drives them away from the system. It is a powerful tonic, and restores the system to its normal state.

SAMARITAN NERVINE Cures Epileptic Fits, Hysteria, Convulsions, St. Vitus Dance, Vertigo, Hysterical Blindness, Aphasia, Paralysis, Hysterical Numbness, and all Nervous Diseases. This safe and reliable remedy cures every case of Nervous Disease in 10 to 15 days, and drives them away from the system. It is a powerful tonic, and restores the system to its normal state.

SAMARITAN NERVINE Cures Epileptic Fits, Hysteria, Convulsions, St. Vitus Dance, Vertigo, Hysterical Blindness, Aphasia, Paralysis, Hysterical Numbness, and all Nervous Diseases. This safe and reliable remedy cures every case of Nervous Disease in 10 to 15 days, and drives them away from the system. It is a powerful tonic, and restores the system to its normal state.

DR. S. A. RICHMOND & CO., World's Epileptic Institute, ST. JOSEPH, MO.

Missouri Pacific Railway!

Passing through the most enterprising portions of Kansas and Missouri, the beautiful Indian Territory and Texas, with a solid steel track to and from the Union Deposits of St. Louis, Hannibal, Kansas City & St. Joseph, Mo., Atchison and Leavenworth, Kan., and Denison, Tex., making close connections in these Depots with other Lines leading to all parts of the United States.

Passengers who purchase Tickets over the MISSOURI PACIFIC RAILWAY have

No Change of Cars

AND DAILY TRAINS

Between the Following Cities: Kansas City and St. Louis, Leavenworth and St. Louis, Atchison and St. Louis, Fort Scott and St. Louis, Fort Scott and Hannibal, Fort Scott and Kansas City, Emporia and St. Louis, Junction City and St. Louis, Denison and Hannibal, Denison and Kansas City, Sedalia and Omaha, Kansas City and Omaha.

Reclining Chair Cars Free.

Besides FIVE lines of Pullman Sleeping Cars and handsome Day Coaches with Toilet Rooms and the latest improvements, heated by pipes and thoroughly ventilated, carpeted, and with colored seat-cloth.

The Missouri Pacific Railway

Has a Steel Track, the Miller Platform, and the latest Automatic Air Brake on all cars in its passenger trains. It is in every respect

A FIRST-CLASS RAILWAY.

For Maps, Time Tables and interesting reading matter concerning the Missouri Pacific Railway and its connections with other Lines, which will be mailed FREE, address

J. A. TALMAGE, Gen'l Manager, ST. LOUIS, MO.



Prepared for Health Lydia E. Pinkham's

VEGETABLE COMPOUND.

Is a Positive Cure For all those Painful Complaints and Weaknesses so common to our best female population.

A Medicine for Women. Invented by a Woman. Prepared by a Woman.

The Greatest Medical Discovery Since the Days of Hygiea. It restores the drooping spirits, invigorates and harmonizes the organs, gives elasticity and firmness to the step, restores the natural lustre to the eye, and plants on the pale cheek of woman the fresh roses of life's spring and early summer time. Physicians Use It and Praise It Freely. It removes fatness, salubrity, destroys all craving for stimulants, and relieves weakness of the stomach. That feeling of bearing down, cutting pain, weight and backache, is always permanently cured by its use. For the cure of Kidney Complaints of either sex this Compound is unsurpassed.

LYDIA E. PINKHAM'S BLOOD PURIFIER will eradicate every taint of Humors from the blood, and give tone and strength to the system, of men, women or child. Indian or English.

Both the Compound and Blood Purifier are prepared at 255 and 257 Western Avenue, Lynn, Mass. Price of either, \$1.00 per bottle for \$1.00 by mail in the form of pills, or of lozenges, on receipt of price, \$1 per box for either. Mrs. Pinkham freely answers all letters of inquiry. Enclose 10¢ stamp. Send for pamphlet.

It is essential that you should have LYDIA E. PINKHAM'S LIVER PILLS. They cure constipation, biliousness, and torpidity of the liver. 25¢ per box.

Sold by all Druggists.

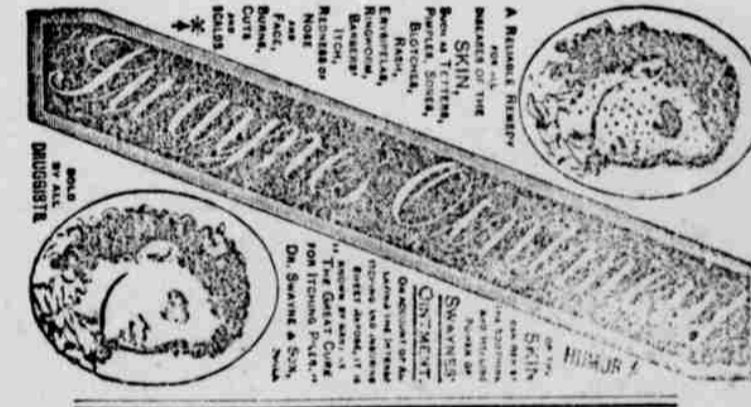
THE MAN WHO IS UNACQUAINTED WITH THE GEOGRAPHY OF THIS COUNTRY, WILL SEE BY EXAMINING THIS MAP, THAT THE



CHICAGO, ROCK ISLAND & PACIFIC R. Y.

IS THE GREAT CONNECTING LINK BETWEEN THE EAST & THE WEST.

Its main line runs from Chicago to Council Bluffs, passing through Joliet, Ottawa, La Salle, Hannibal, Rock Island, Des Moines, Keosauqua, Leavenworth, Atchison, Emporia, Junction City, St. Joseph, Mo., Atchison, Leavenworth, Kansas City, Washburn, Independence, Elton, Ottumwa, Eldon, Keosauqua, Peoria, Keosauqua and Des Moines to Chicago. It is positively the only Railroad, which owns and operates a through line from Chicago into the State of Kansas. Through Express Passenger Trains, with Pullman Palace Cars attached, run each way daily between Chicago and PEORIA, KANSAS CITY, COUNCIL BLUFFS, LEAVENWORTH and ARCHIBOLD. Through cars are also run between Milwaukee and Kansas City, via the Milwaukee and Rock Island Short Line. The "Great Rock Island" is magnificently equipped. Its road bed is simply perfect, and its track is laid with steel rails. What will please you most will be the pleasure of enjoying your journey, while passing over the beautiful scenery of Illinois and Iowa, in one of our magnificent Dining Cars that accompany all Through Express Trains. You eat and drink as good as you serve in any first-class hotel, for seventy-five cents. Appreciate the fact that a majority of the people prefer separate partitions for different purposes, and the more the passenger business of this line is patronized, the more we are pleased to announce that this fine Pullman Palace Sleeping Cars for sleeping purposes, and Palace Pullman Palace Cars are run through to PEORIA, DES MOINES, COUNCIL BLUFFS, KANSAS CITY, ATCHISON, and LEAVENWORTH. Tickets via this line, known as the "Great Rock Island Route," are sold by all Ticket Agents in the United States and Canada. For information not obtainable at your home ticket office, address, R. H. CARR, The President and Gen'l Manager, CHICAGO, ILL.



W. E. CHICK & CO., WOOL COMMISSION MERCHANTS

St. LOUIS MO. The only exclusively wool CONSIGNMENTS Solicited. (References: Merchants Nat'l Bank St. Louis, Bank of Kansas City, K. C. Mo.)

RECTANGULAR CHURNS. SQUARE BOX. Cheapest and best. No inside fixtures, and always reliable. Seven sizes of each kind made. Also, three sizes of the Lever and Eureka Butter Worker, Curtis' Improved Factory Churn. Mason's Power Butter Worker will work 6,000 lbs a day. All goods warranted exactly as represented. Agents wanted. CORNISH & CURTIS, Ft. Atkinson, Wis.

It is manifest that from GOOD SEEDS ONLY Good Vegetables are obtained. The character of LANDRETH'S SEEDS has been substantiated beyond question. They are the STANDARD for Quality. Over 1500 acres in Garden Seed Crops under our own cultivation. Ask your Nearest Neighbor for them in original sealed packages, or drop us a postal card for prices and Catalogues. Wholesale trade prices to dealers on application. Founded 1784. DAVID LANDRETH & SONS, 21 and 23 S. Sixth St., Philadelphia.