

INDUSTRIAL SECTION

Devoted to the Development of
PROWERS COUNTY COLORADO

An Empire of Undeveloped Irrigated Agricultural Wealth, in the
Lower Arkansas Valley, Colorado

200,000 ACRES NOW UNDER IRRIGATION

260 Miles of Main Canals and Storage Reservoirs

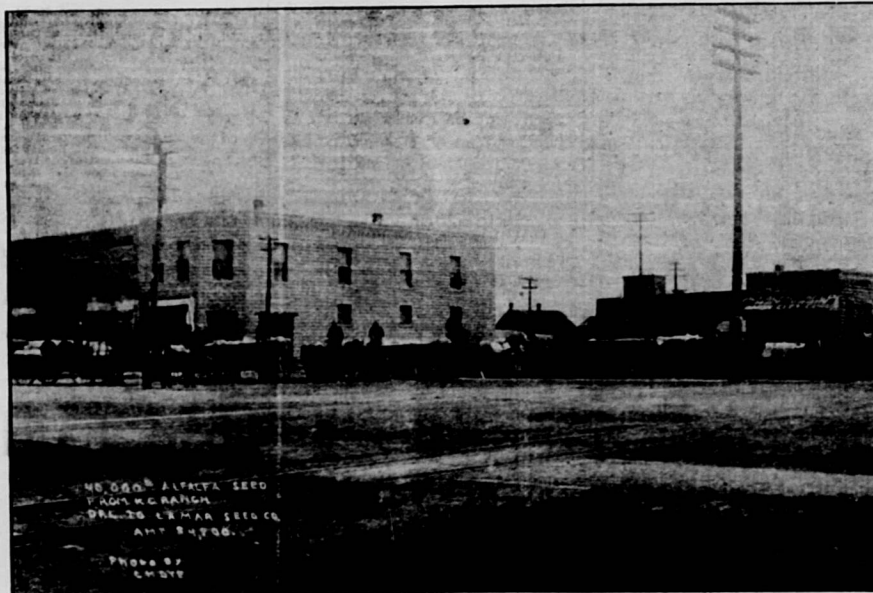
*The Land is Young. Opportunity Beckons You to Industry and Profit. Insure your
Future Success and Contentment with a 40 acre farm
in this Rich Prosperous Valley*

**Incorporated and
Banking Towns in
Prowers Co.**

Population.

Lamar	5,000
Holly	2,000
Wiley	600
Granada	500
Hartman	500
Bristol	400

All on railroad and enjoy
exceptional commercial and
social advantages.



Eight Wagon Loads of Alfalfa Seed, \$4,700 Worth

**These Valley Lands
and the Market
for Same excell
in the follow-
ing Crops**

Sugar Beets, Alfalfa, Can-
taloupe, Corn, Oats, Wheat,
Barley, Rye. Most all fruit
and vegetables. Perfect con-
ditions prevail for Dairying.
Livestock and Poultry
raising is proven successful.

COUNTY SEAT
PROWERS COUNTY

LAMAR, COLORADO
THE METROPOLIS

POPULATION 5,000
ELEVATION 3,700

**The Irrigated Area in the Trade Territory Tributary to Lamar is the Largest
in the Great West.**

Lamar is situated on the Main Line of the Santa Fe R. R.,
500 miles west from Kansas City and 250 miles east from Den-
ver.

Lamar regales in her "Colorado Climate" and in her civic
and commercial attainments.

Lamar occupies a first position among Colorado's rapidly
growing towns as may be seen from these principal enterprises.

Post Office of the 2nd class, City delivery and Free Rural
delivery.

Eight Churches, Carnegie Library, High School and Public
Schools.

Lodges—Masonic, I. O. O. F. and K. of P.

3 Banks, Aggregating 3-4 million dollar deposits.

The American Beet Sugar Co. Factory—Capacity 600 tons
daily.

Flour Mill, 600 bbls. daily (Second largest in the State)

U. S. Land Office, Adequate Water Works, Sewer System,
Electric Lights, Power and Steam Heating Plant, Ice Plant,
Auto Fire Wagon, Steam Laundry, 15 miles of Concrete sidewalks
3 Weekly and 1 Daily Papers.

For General Information and Literature address,

The Lamar Commercial Club

E. H. Gereke, Secretary, Lamar, Colorado.