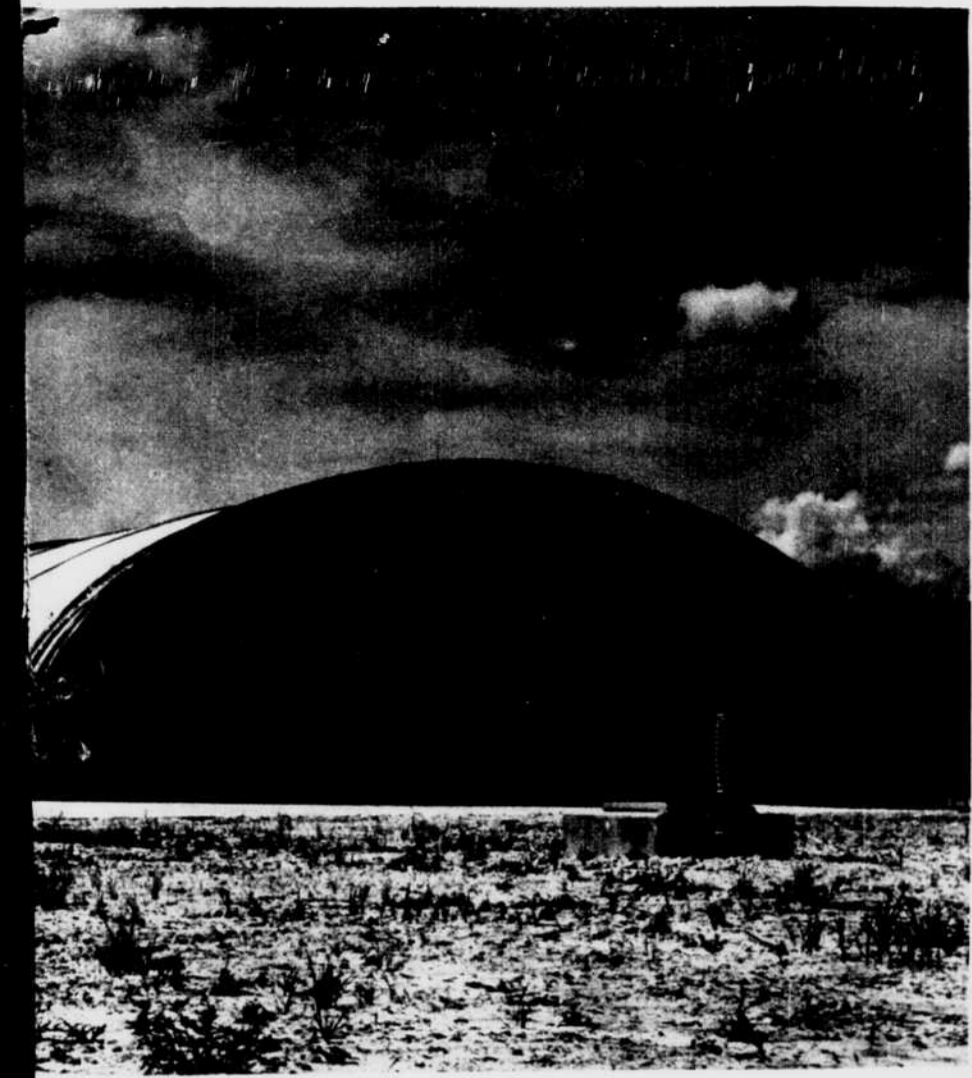


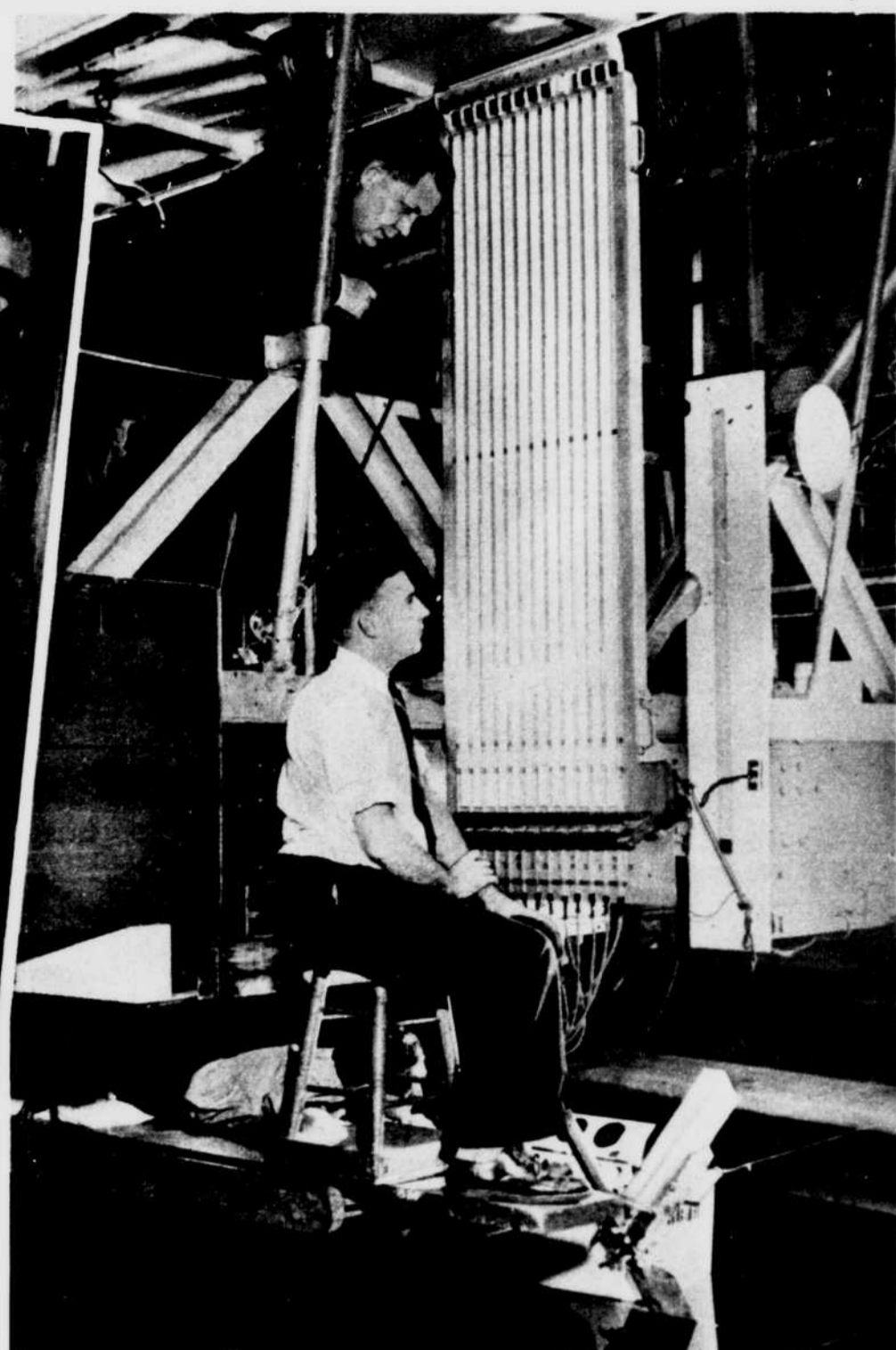
Ships in Miniature



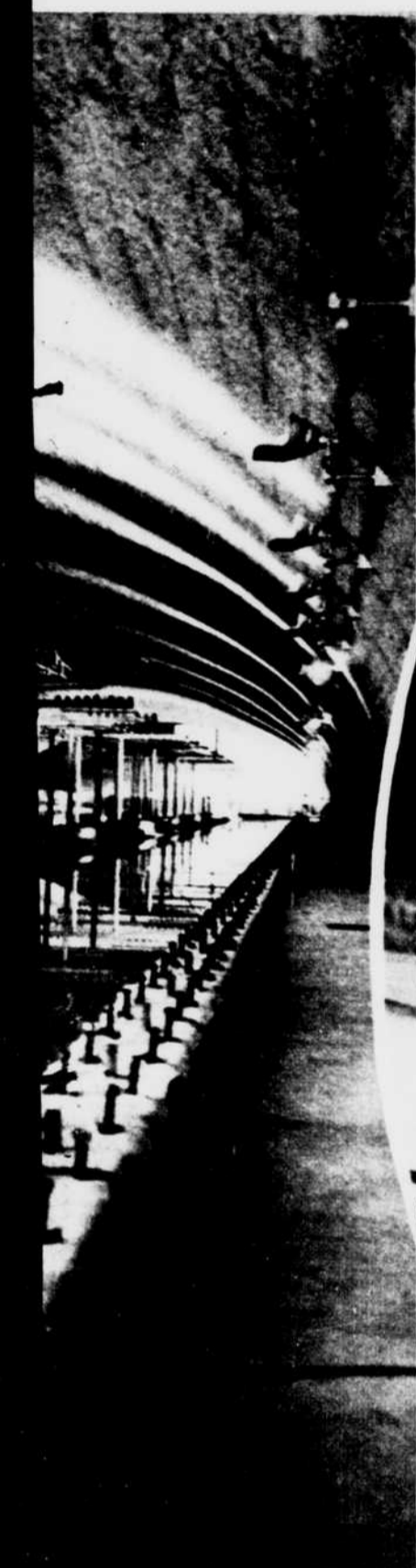
Exterior view of the building which houses the new testing basin at Carderock.



Seated on the bridge of the towing carriage as it sweeps along, these two engineers record data pertaining to ship design characteristics.



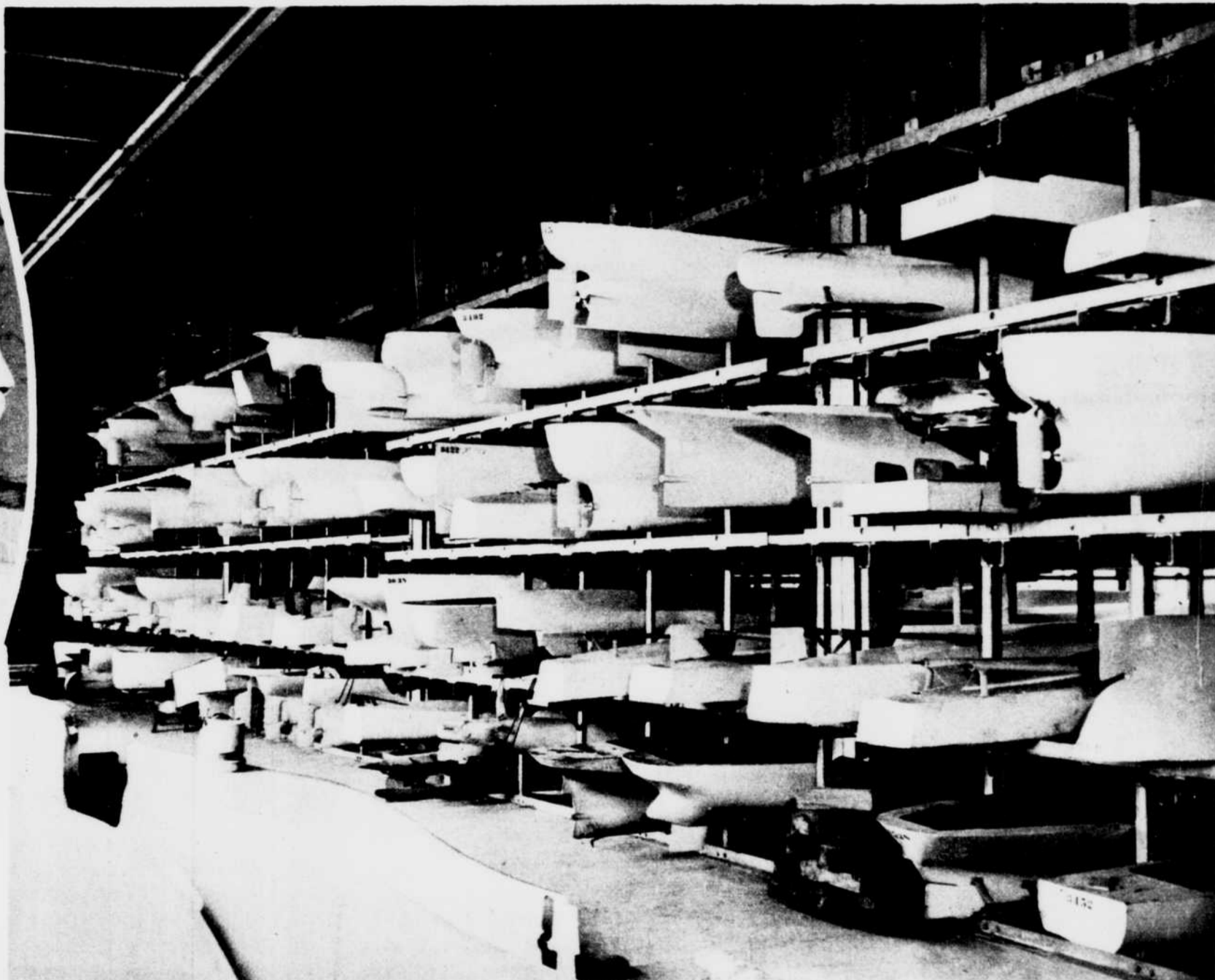
Engineers checking pressure of water against the hull of a model. Comdr. Irving B. McDaniel, executive officer, supervises from the carriage bridge.



Carderock, the world's largest



Installing propellers for a self-propelled test. In these tests the towing carriage will not be used. Power is supplied by electric motor.



Four tiers of 10 and 20 foot model ships. Note the submarine model near right end of top tier. Most models are destroyed a year after the real ship has passed its final tests. Some are kept for future reference.



to tests in the water runway.
Harris & Ewing Photos



General view of the old modelmaking room. Some of the machinery has now been moved to Carderock.



Models are made of sugar pine, glued and doweled firmly. This man is "fairing"—shaping and smoothing the hull. He must be accurate to a hundredth of an inch.