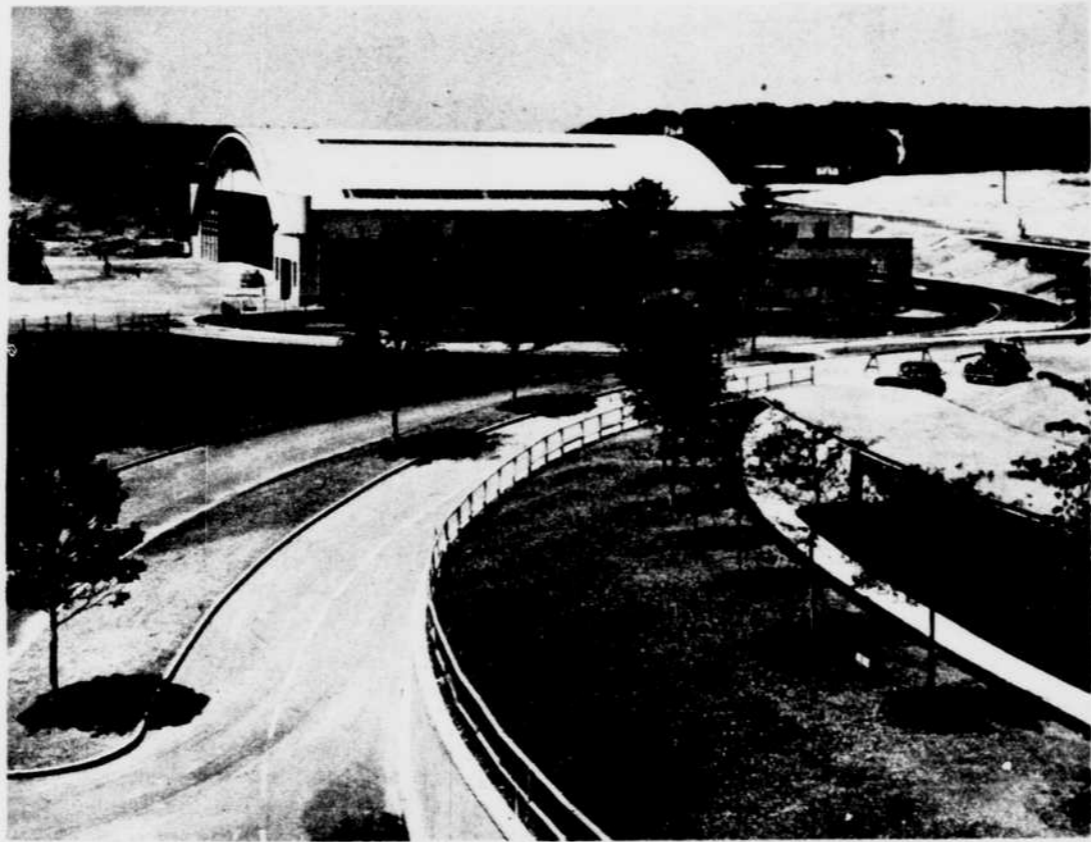


# National Airport Points the Way in Efficiency



John Groves, manager of the new airport, gets down to the man-sized job. He is an appointee of the Civil Aeronautics Authority, under which the airport is operated as a Federal project throughout.

In flight over Washington National Airport you get this view of the administration building as it fronts on a curve the great paved area for waiting passenger planes. Beyond is the system of highway approach and still uncompleted landscaping that will contribute to the airport's front rank as a thing of beauty as well as utility.

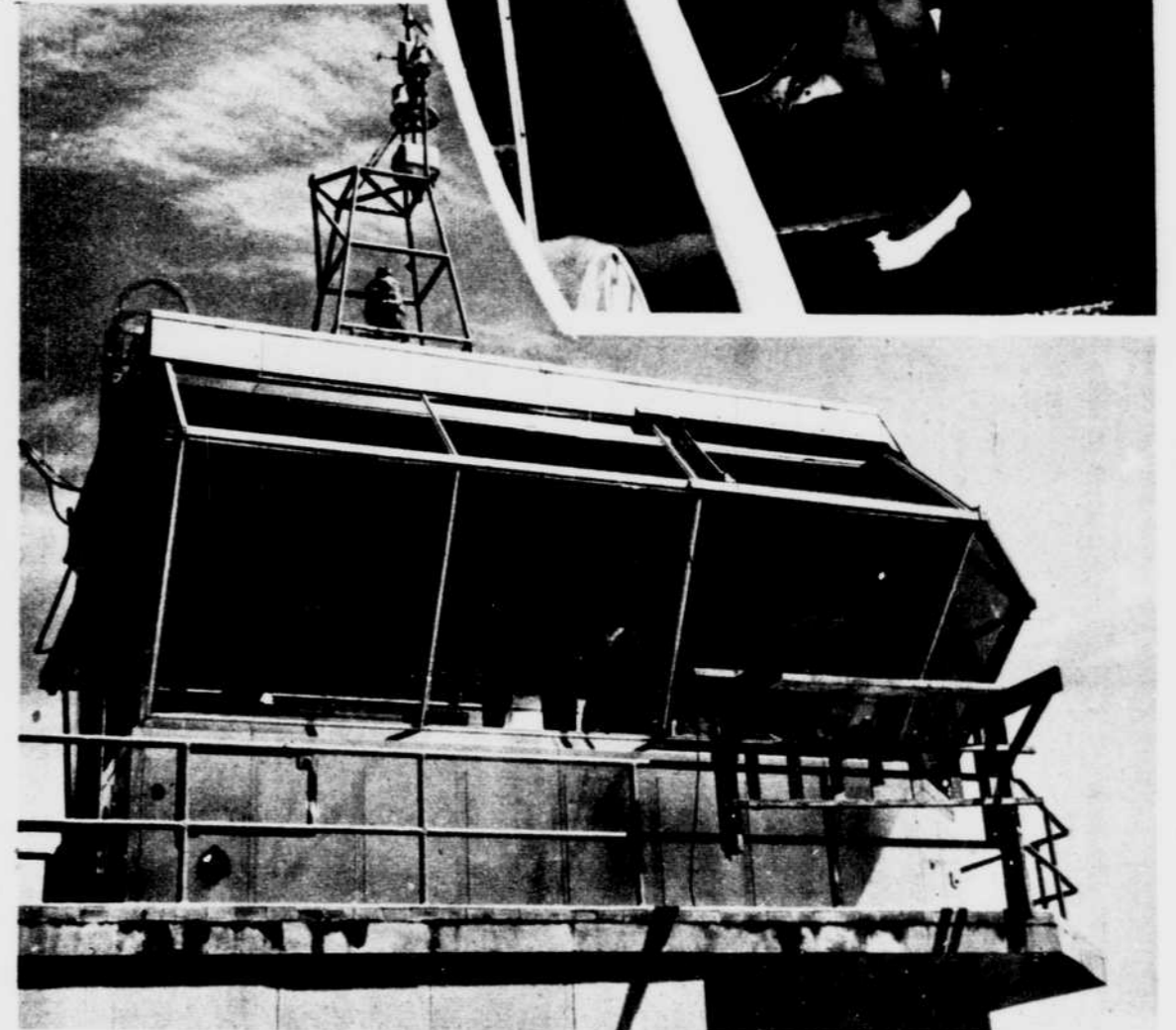


Beautifying the occasion of the airport's opening, Miss Jerry Matthews, George Washington beauty queen, boards an airliner for New York.

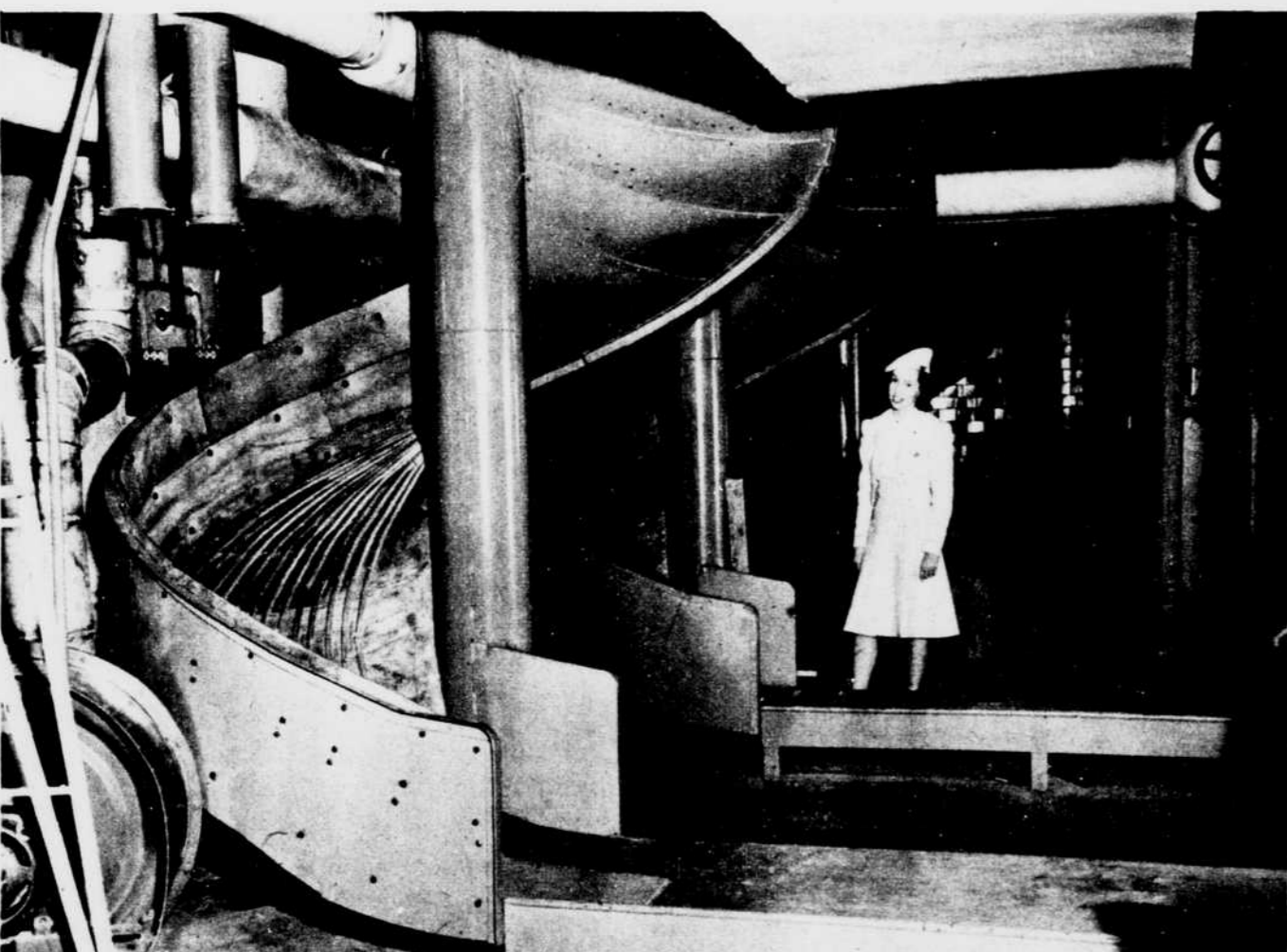


Airport operations are starting off as a free show for those who like to watch the big planes swoop in and out. All observation decks are free of charge. This is a view along the lower deck.

↑ One of the airport's enormous hangars looms in the background of this highway view to the west of the administration building. There is ample room for more hangars as operations expand—and this is an early certainty with restrictions on air travel here imposed by the inadequate old Washington airport now removed by this great terminal.



In this control tower atop the administration building is housed the most complete and efficient airport traffic control system in the world. The operator has his "finger" on every plane within a wide radius of the airport to co-ordinate and safeguard operations.



Your baggage will chute-the-chute in this automatic system for getting it aboard planes. It was not quite completed as the airport opened for full-time operation. This was true of some other facilities, including the beautiful dining room which will be one of the main attractions.



The spacious main waiting room, with its glass-paneled front, looks out on the great pattern of concrete runways that lead the eye to the river and Washington beyond. Here, under the balcony, are the ticket booths, with telegraph stations in the center.

Star Staff Photos.