

Overlooking and Underlooking

An ADITORIAL

ASTIGMATISM Today astigmatism (non-focussing) is successfully overcome by specialists. Often it is present in addition to other defects. The Etz optometrist can give an immeasurable lens-comfort. We have the finest clinical equipment for diagnosis.

For child or adult with astigmatism, Etz fittings open vistas to a new world.

"See ETZ and See Better"



1217 G Street N.W.

SOLICITING FELONY ACTION IS CHARGED

Grand Jury Indicts Alleged Plotter Against Life of Wife.

Andrew T. Bailey, colored, an employe of the Post Office Department, was indicted yesterday by the grand jury on a charge of soliciting to commit a felony. This is said to be the first indictment in this jurisdiction, and recourse to the common law was necessary, there being no statute covering the alleged offense.

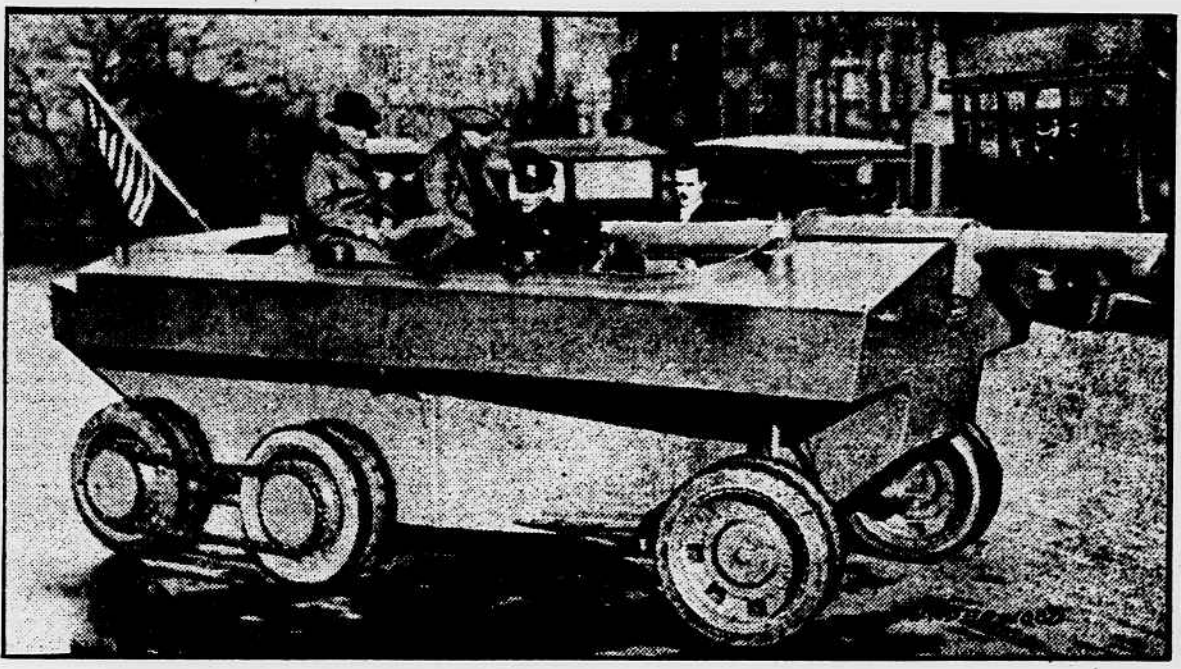
Bailey is said to have offered to a friend \$50 to kill Bailey's wife, Mamie Bailey, of 812 13th street northeast, August 28 last, and to divide the proceeds of a \$500 insurance policy on the wife's life. Bailey is held under \$5,000 bond.

The grand jurors ignored three charges of homicide: Lloyd A. Rowe, charged with manslaughter in connection with the death of David A. Harvey last March; Rayfield Ransom, held by a coroner's jury for killing of William Jackson last September, and Harry E. Carpenter and William F. Sullivan, arrested in connection with the death of Walter Anderson last May.

They also ignored a charge of promoting a lottery scheme against A. Himmelfarb, Walter A. Bell and Mary E. Jefferson, and a charge of carnal knowledge against Abraham Mitchell.

A total of twenty-two indictments was reported, including the following: George J. Williams, robbery; James Graham, Alfonso Wheeler, Richard Travis and Harvey R. Chase, assault with dangerous weapon; Robert Gilchrist, Agnes Harris, Wesley Jackson and James Willis, house-breaking and larceny; Ross V. Richmond and James Perry, forgery and uttering; Christopher P. Goins, assault with dangerous weapon; John Dorsey, Charles H. Langster, Austin Carter, Frank Queen, Anderson W. Moon and Percy J. Pitts, non-support.

"LAND BATTLESHIP" CLIMBS HILLS AS WELL AS SWIMS



The "land battleship," invented by Walter Christie, in a demonstration before the American Society of Mechanical Engineers in New York. The machine climbed a steep hill and even steeper knoll, turned around and plunged into the Hudson river and crossed it.

It is fitted with hard rubber tires and moved over the asphalt without tearing it, although the weight of the machine is six tons. The new "tank" is fifteen feet long and six feet wide. It will carry a crew of ten and food for twenty-four hours. On land it has a speed of thirty-five miles an hour. Fitted with caterpillar chains, it will do twelve miles. With propellers affixed to take the water it has a speed of six knots.



MOTHER, CLEAN CHILD'S BOWELS WITH "CALIFORNIA FIG SYRUP"

Even Cross, Feverish, Sick Children Love its Taste and it Never Fails to Empty Little Bowels

Hurry, mother! A teaspoonful of California Fig Syrup today may prevent a sick child tomorrow. If your child is constipated, bilious, fretful, has cold, colic, or if stomach is sour, tongue coated, breath bad, remember a good liver and bowel action is often all that is necessary. Ask your druggist for genuine California Fig Syrup. It never cramps or overacts. Full directions for babies and children of all ages are printed on each bottle. Say "California" or you may get an imitation fig syrup.

DODGE BROTHERS USED CARS

Many people have the habit of getting a new car every year, no matter how good the old car may be. It is a good habit. Good for us because it helps the sale of new cars and puts some extra good used cars at our disposal. And that is what makes it good for you.

Remember: A used car is only as good as the firm with which you deal

Semmes Motor Company
Used Car Department
613 G St. N.W. Main 6660

LIONS CLUB TO VISIT NEEDY AT CHRISTMAS

Members Take Pledge to Distribute Clothing, Food and Gifts.

Pledges by all members of the organization to visit personally at least one poor child or aged needy person at Christmas, were made at a meeting of the Lions Club in the New Willard Hotel yesterday afternoon.

Aside from this individual charity the club's Christmas committee will distribute clothing, food and gifts among the deserving of the city, and preparations to carry out an elaborate program have already begun.

James P. Schick presided, and introduced Joseph A. Burkhardt, president of the recently organized Newcomers Club,

TWO GENERALS RETIRE.

They are Gen. Frank L. Winn of Kentucky, formerly of the infantry, and recently stationed at Fort McPherson, Ga., and Gen. Edgar Russell of Missouri, formerly of the Signal Corps, and recently stationed at Edgewood, Md., and this city. Both officials are graduates of the West Point Military Academy and both were made major generals a few weeks ago.

Winn of Kentucky and Russell of Missouri on List.

Two major generals who were decorated for distinguished service during the world war, were placed on the retired list of the Army today, on account of

disabilities incident to the service.

Miss H. W. Deterding is the only woman member of the Amsterdam Stock Exchange.

Bargain Sale of City Lots

To close a syndicate, we are offering the most wonderful bargains in Washington city lots. These lots are not out in the suburbs, but are a part of the original city of Washington as surveyed and platted by General George Washington.

LOCATION: These lots are located on one of the most healthful and commanding plateaus of the National Capital, East of the United States Capitol grounds. Massachusetts Avenue and East Capitol Street, premier boulevards, traverse the properties; two squares from Holy Comforter Academy; five squares from beautiful Lincoln Park; opposite the \$2,500,000 new Eastern High School. These lots front East Capitol Street, A Street, B Street, C Street, D Street and E Street, Massachusetts and Potomac Avenues, 17th and 18th Streets Southeast. Three streets, each 160 feet wide through the property.

THE LOTS: These lots were part of the United States Government housing properties, on which the Government spent practically three-quarters of a million dollars. There are nearly 500,000 square feet of ground in about 170 lots. The lots range in size from 25 feet in width by 100 feet in depth to lots 26x136 feet. Every lot has a wide rear alley. The subdivision plan was made by the U. S. Housing Corporation following the suggestions of the ablest housing experts in America.

IMPROVEMENTS: Some of these lots have water, sewer, gas, electricity and paved streets. All of these improvements are available to all of these lots. The street car line is to be extended three blocks out East Capitol Street to the property. Pennsylvania Avenue cars are two squares south, at 17th Street.

TITLE: Title to these lots comes from the United States Government and has been passed upon by the District Title Insurance Company and the Washington Title Insurance Company.

THE HOME BUYER: We will sell you lots for much less than actual value on very easy terms and will provide you a first mortgage to apply on the building of your home. You can build on these lots the home of your dreams. The home designed to meet your every individual want. In a location you will be proud to live.

THE BUILDER: We will sell you a block of ground at a less price than similar ground can be purchased for anywhere else in the world. Lots upon which you can build houses in a row. Row house building lots are becoming scarcer every hour. We will negotiate for you a first Deed of Trust to be used in building your houses. We will accept one-half cash and the balance secured as a second trust. We will sell your houses to net you big profits. The demand is here. Build where other builders are making their fortunes. Build where you can sell your houses before completion. Build where there are more buyers than houses. Build where there is need for a thousand homes.

PRICES AND TERMS: Beautiful lots 25x100 to 20-foot alley only \$625; splendid lots 25.83 feet by 132 feet deep to 30-foot alley, containing 3,400 square feet, with water, sewer, gas, electricity, improved street, facing handsome new homes, only \$875; other lots at lower prices; a few higher. The terms are 20% cash and the balance payable in 36 equal monthly installments, with interest at 6%.

BUILDER COMPARE: Buy 7 lots at \$875 each, being a total cost of \$6,125, and having a total frontage of 180 feet. Subdivide these lots into 10 lots each 18 feet wide to cost \$612.50 each. Remember, these lots have water sewer, gas, electricity and improved streets, and you need pay only one-half cash, the balance as a second trust. Bear in mind that these lots are in a location where a six-room house sells at a high price.

TO INSPECT THESE LOTS: Take any Lincoln Park car to the end of the line, walk east two blocks; or take a Pennsylvania Avenue and 17th Street car Southeast to 17th Street, walk north two blocks. Free transfers are issued to these car lines in all parts of the city. Drive out East Capitol Street to 18th Street Southeast, paved all the way. Drive out Massachusetts Avenue to 17th Street Southeast, or drive out Pennsylvania Avenue to E Street then east to 17th Street, paved all the way.

General Counsel: R. B. Behrend, American Bank Building
General Sales Directors:

W. L. Turner, Vice Pres., Washington Real Estate Co.
L. D. Abrams, Vice Pres., Second Floor, 728 15th St. N.W.
Telephones Main 833; Evenings, Adams 1514

E. H. Taggart
1518 K Street N.W.
Telephone Main 5500

W. W. Keeler
134 11th Street S.E.
Telephone Lincoln 2225

Call any of the above offices and salesmen with automobiles will show property. Salesmen on property at all hours.

General Office on Property
1719 A Street Southeast
10 Salesmen Wanted With Automobiles

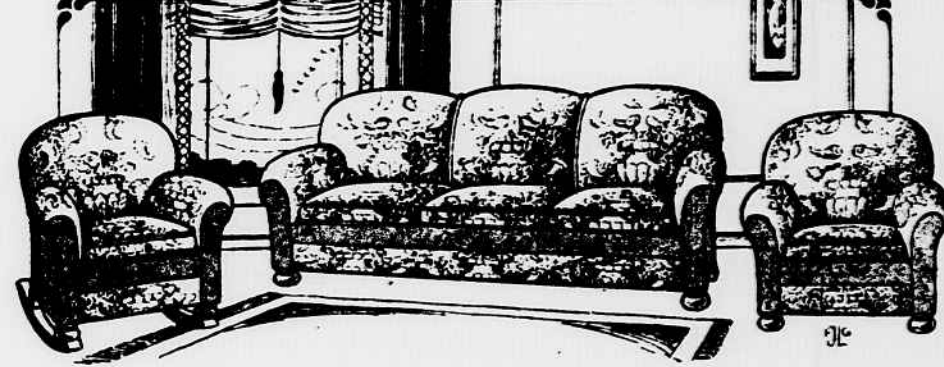


The Julius Lansburgh Furniture Company

Has filled its floors with Gift Suggestions, and hundreds of people are deciding that a gift of Furniture will be a gift ideal. And it IS ideal, for not only does a gift of furniture last for years and years, but you can actually SAVE on Gifts of Furniture at this store whether you buy an entire suite or an odd piece.

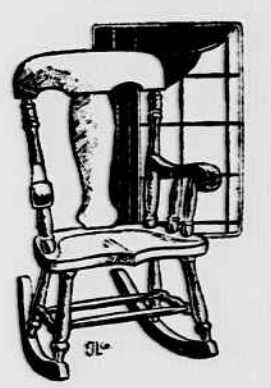
Open an Account Pay Weekly or Monthly

Priscilla Sewing Cabinet
Genuine Mahogany
\$12.75

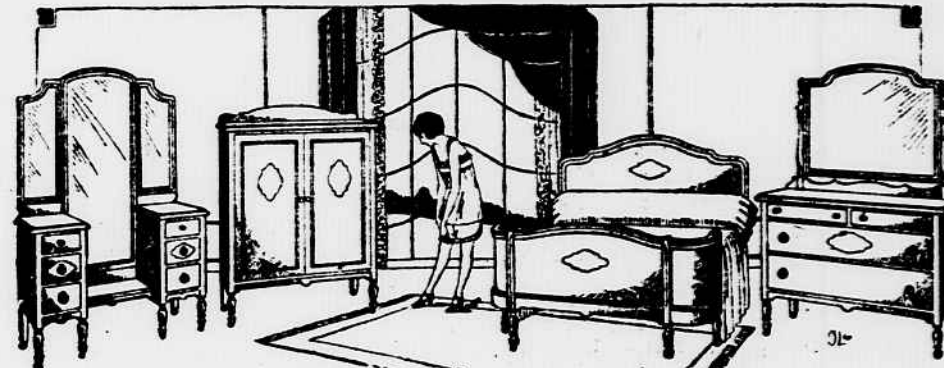
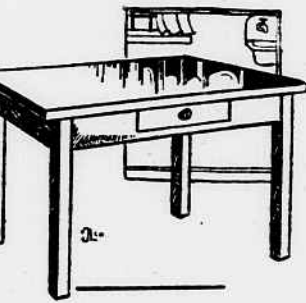


This 3-piece Overstuffed Living Room Suite
Consists of wide Settee, Armchair and Arm Rocker. It is covered with good grade tapestry and has spring seat construction. Cushions are removable. A wonderful value
\$129.75

Rocker
Mahogany Finish
Special
\$6.75

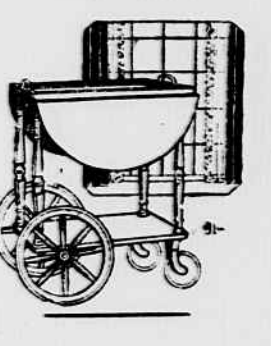


Kitchen Table
Top of white enamel; built to stand the knocks without flinching.
Special
\$4.75



Four-Piece American Walnut Suite
Large Dresser, Bow-end Bed, full size Vanity and Man's Robe with compartments for clothes on one side, and plenty of drawers on the other. The two-tone decorations in all the pieces
\$219.75

Tea Carts
With drop leaf; in walnut or mahogany; an attractive and practical gift.
\$22.50



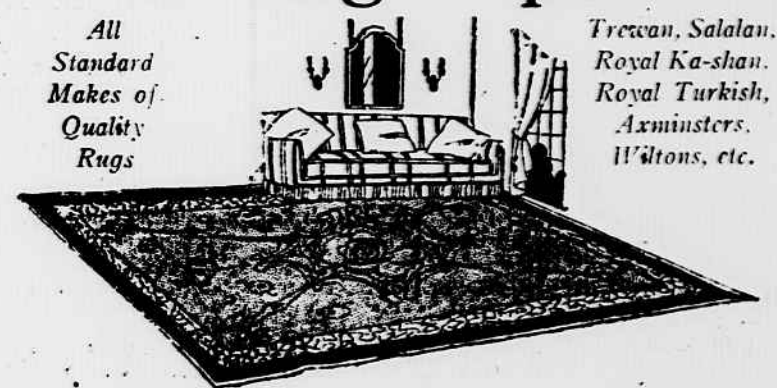
"SELLERS" Kitchen Cabinet In Our Rug Department

"The Best Servant in Your Home"



A labor saver and a true friend of the housewife. We show a complete line of them for the Christmas season, and a more practical gift could hardly be given. Prices start at

\$29.75



Wool and Fiber Rugs, 9x12 \$12.75
Tapestry Rugs, 9x12 \$18.75
Axminster Rugs, 9x12 \$34.75
Wilton Rugs, 9x12 \$69.75 to \$179.75
Other sizes in proportion.

Nursery Chair \$2.98



JULIUS LANSBURGH FURNITURE CO.
Cor Ninth & F Sts. Entrance 509 7 St.

Smoking Stand
Mahogany finish, with glass tray.
98c

