

The George Washington University Department of Law

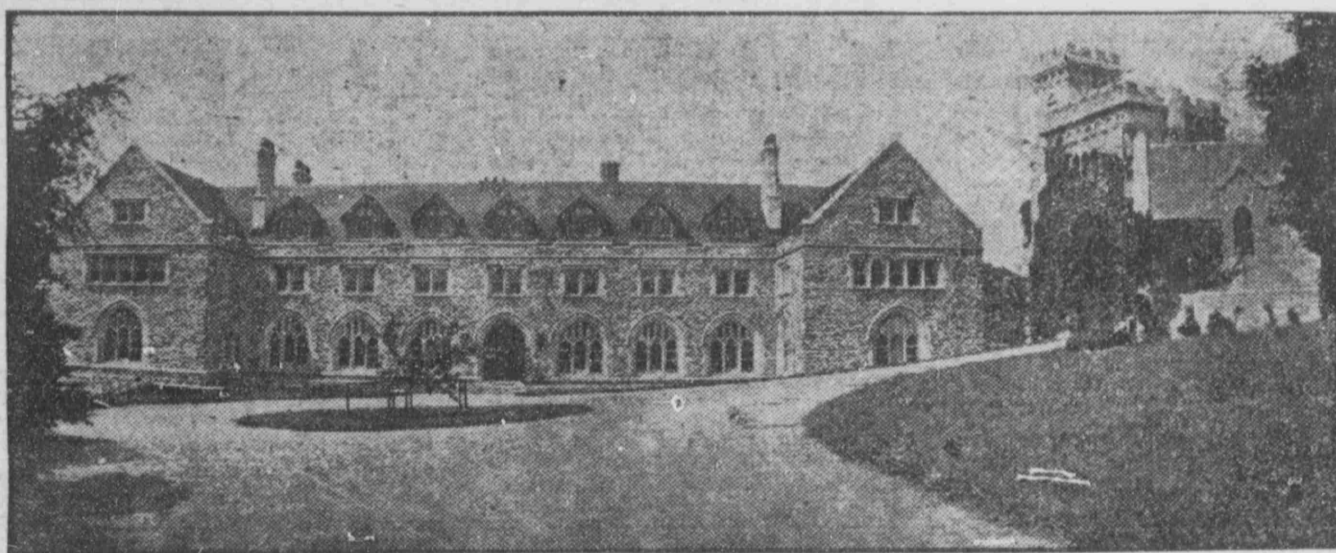
In addition to the Day Course (lecture hours mostly from 9 a. m. to 12 m.) and the Graduate Courses,

A NEW THREE-YEAR AFTERNOON COURSE

will be given at the coming session, with lecture hours from 4:50 to 6:30 p. m.

A MEMBER OF

and the only Law School of the District of Columbia complying with the standard of work and requirements of
The Association of American Law Schools.



MAIN BUILDING.

The National Cathedral School for Boys

The Lane-Johnston Building, Mount St. Alban.
Boarding and Day School.



BASEBALL TEAM, 1910.

This school has as its only object the satisfaction of the most discriminating parent in the mental, physical, and moral development of the boy.

A group of specialists, with a thorough knowledge of what parents expect and boys desire, make the realization of this ideal possible.

Day students enjoy every advantage and the use of the same equipment as the boarding pupils. Term begins October 7.

For catalogue and information address EARL GREGG, Headmaster.



FOOTBALL TEAM, 1909.