

GUARANTEE
Your Money Back
If You Want It.
See Editorial Page, First Column.

First to Last—the Truth: News - Editorials - Advertisements
SUNDAY, OCTOBER 17, 1915.—SEVEN PARTS—FIFTY-SIX PAGES.

PRICE FIVE CENTS.

Vol. LXXV. No. 25,172.

TRIBUNE POLL GIVES SUFFRAGE BIG LEAD IN NEW YORK CITY

First of Series of Straw Votes to Show Trend of Public Opinion.

936 FOR AND 694 AGAINST
Only 240 Out of 1870 Canvassed in Woolworth Building and Hoe Factory Declare They Are Undecided.

Table with 4 columns: Places canvassed, For, Against, In doubt, Total. Rows include Woolworth Building, Hoe & Co's plant, and Totals.

JERSEY WOMEN SURE OF VOTE; FOES IN DOUBT

Win or Lose on Ballot Question, Suffragists See Victory.

The campaign for woman suffrage in New Jersey ended, to all intents and purposes, last night, with the result of the vote on Tuesday in doubt.

William J. Bryan was the big suffrage gun on the last night of the campaign, speaking to overflow meetings in Paterson and Newark, heart of the enemy's country.

Both the suffrage leaders and those who are opposed to extending the suffrage to women profess to be certain of victory, with the women in the majority.

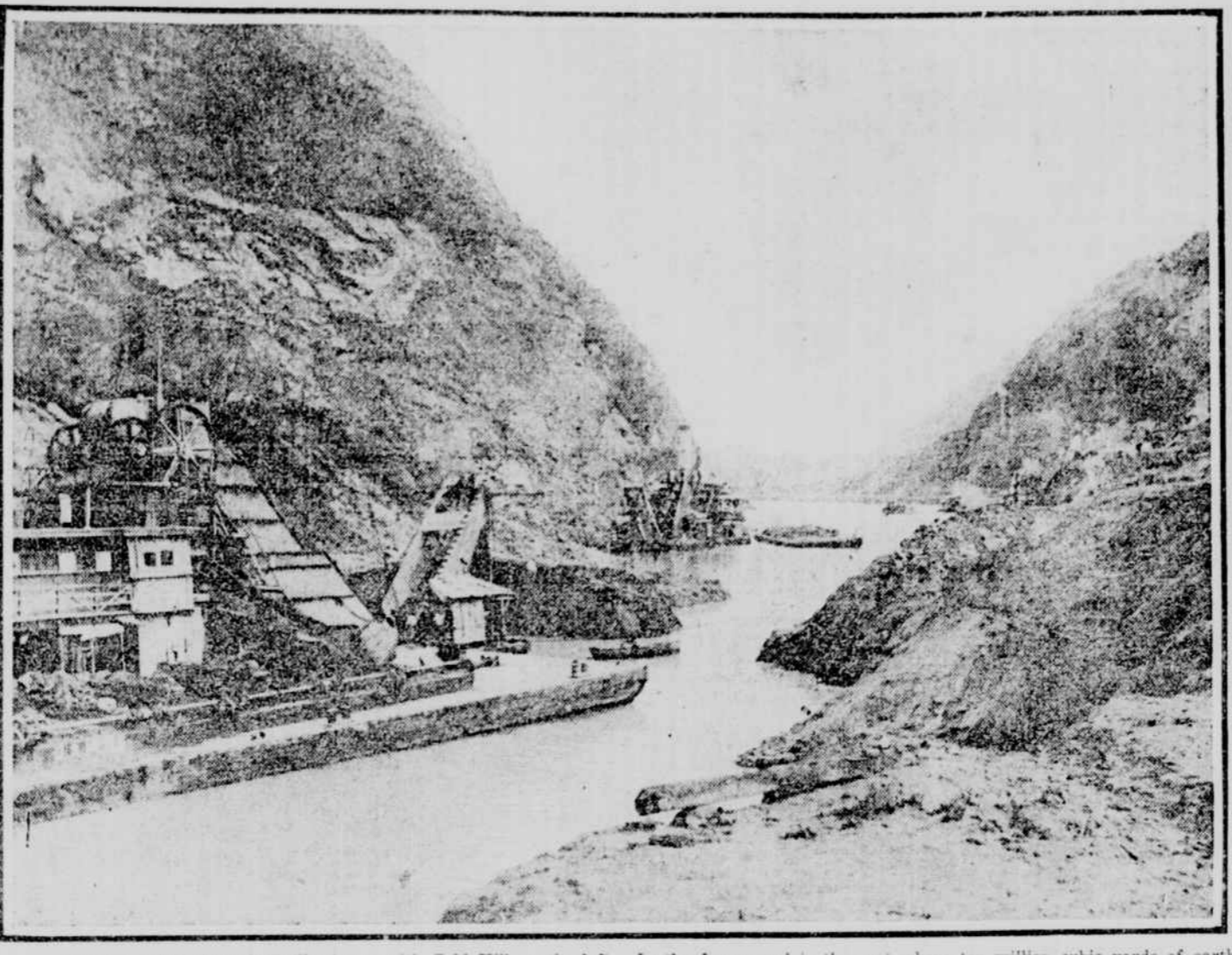
Reports from the various centres in the state show conditions to be strangely mixed as to the sentiment, though in some of the counties which the friends of suffrage claim they will carry those who have stood silent are counted as unfriendly.

Rural Situation in Doubt. One peculiar feature of the situation is the fact that in the cities reports have it that the vote there for suffrage will be largely in favor, but may be outbalanced by the rural vote, which the city reports say is likely to be anti.

A few hesitates in replying. The matter of woman suffrage has been seriously considered by the voters.

Below: The Tribune presents last minute reviews of the situation by counties: HUDSON. Indications point to a victory for woman's suffrage in Hudson County by a comfortable margin.

WHERE TWO CONTINENTS HAVE ALMOST REUNITED AT PANAMA



Looking south through Gaillard cut, with Gold Hill on the left. In the foreground is the spot where ten million cubic yards of earth are sliding into the canal. The narrowness of the channel separating the two continents at this point may be gauged by the size of the rowboat in the centre.

GOVERNOR IN EGG BUSINESS

Rhode Island Executive Builds in His Garden for Chickens. Newport, Oct. 16.—Governor R. Livingston Beekman, since he has been Chief Executive of the state, has made a practice of visiting all of the county fairs and has become so impressed with the poultry departments that he has decided to go into the chicken and egg business himself.

In his garden in Coggeshall Avenue he is to have erected a chicken house more than 100 feet long, and this he will stock with the best of the feathered family.

3 KILLED, 5 HURT AS AUTO HITS CAR

Chauffeur Loses Control of Machine—One Woman Is Injured. Three persons were killed and one fatally injured early this morning when a seven-passenger touring car travelling north on Boston Road between Bryant Avenue and East 176th Street, The Bronx, collided with a Union railway wrecking car coming south.

The dead are: Kehner, Joseph, address not known. Terras, Anthony, 409 West Thirty-ninth Street. Wicker, William, same address. Frederick Lasarto, of 452 West Forty-sixth Street, was taken to Fordham Hospital, where it was said he would die. The chauffeur escaped and a woman who was in the machine was taken to Fordham Hospital. She could give no information to Coroner Healy, who ordered the bodies of the three victims taken to the Fordham morgue.

20 KILLED BY DROP OF CAR INTO RIVER

Motor Train Crashes Through Bridge—Buries Teachers in Water and Mud. Randolph, Kan., Oct. 16.—Eleven bodies have been recovered from the wreck of the passenger car of the Union Pacific motor train that plunged into Fancy Creek, near here, to-day. Thirty-seven more are injured and some of them may die.

Several more bodies are in the forward compartment of the car. The total number of dead is now estimated at twenty. The motor train consisted of one passenger coach and a baggage and mail combination car. It crashed through an undermined abutment into Fancy Creek and buried fifteen feet of the forward end of the passenger car in flood waters and mud.

Fancy Creek was swollen into a torrent by rain which fell yesterday and last night. The bridge proper withstood the waters, but the south abutment had been undermined. A majority of the passengers were young women school teachers from the southern part of Riley County, Kansas, on their way to a teachers' meeting, which was to have been held here to-day.

Just how many bodies remain in the car will not be known until to-morrow morning. The car is extremely heavy and has a pointed "nose" that buried itself in the bed of the stream.

ASHEVILLE—"LAND OF THE SKY" Reached by Southern Railway from N. Y. Reached by Southern Railway from N. Y. Reached by Southern Railway from N. Y.

GARRISON'S PLAN FOR ARMY WINS QUICK APPROVAL

Believed Acceptable to Advocates of Economy and Preparedness. Washington, Oct. 16.—Army men gave their hearty approval to-day to Secretary Garrison's plan to increase the army to about one million men. Many of them admitted that the programme was far short of what the nation ought to have, pointing particularly to the brief training of the proposed "continental" army, but they said it was better than anything they had expected.

HALF OF VICTIMS IN LONDON RAID DIED OF SHOCK

Inquest Discloses That Few Were Killed Directly by Bombs. London, Oct. 16.—The medical evidence at the inquest held to-day on the eighteen victims in the London area of the Zeppelin raid on Wednesday night disclosed that the death of half of them, the majority of whom were women, was due to heart failure or shock resulting from the terrifying effect of the exploding bombs and the gunfire.

GERMANS LOSE SIX SHIPS

British E-Boats in Baltic Sink Five Transports. Petrograd, Oct. 17.—British submarines, operating in the Baltic Sea, have sunk five German transports and forced another ashore, according to a Russian official statement given out here to-night.

INSISTS CARSON RESIGNED

"Daily News" Says Government Urges Attorney General to Stay. London, Oct. 16.—Sir Edward Carson has resigned as Attorney General, the Parliamentary correspondent of "The Daily News" insists, despite the minister's recent denial.

GERMANY "CAPTURES" SHIP OUT OF COURSE

Vessel for Copenhagen with Cotton Suspiciously Piloted. Stockholm, Oct. 16.—The Norwegian steamship Eir, loaded with cotton and bound from Bergen, Norway, for Copenhagen, was captured to-day by a German warship in the Cattegat, the arm of the North Sea between Sweden and Denmark.

GERMANS ARRESTED FOR AETNA BLOW-UP

Powder Company Electricians Held for Plant Explosion. Kane, Penn., Oct. 16.—Louis Subitzke, chief electrician, and A. Fronholz, assistant chief, at the plant of the Aetna Explosive Company at Emporium, were arrested to-night by Sheriff J. G. Judd of Cameron County and members of the state police, as the result of an investigation of the recent explosion at the plant, which caused the death of five men.

SKUNK SKINS RUN BLOCKADE

Americans Also Buy Half Leipzig's Stock of Fox Pelts. Zurich (via London), Oct. 16.—The Leipzig market reports show that despite the blockade half the entire stock of fox skins, numbering many thousands, has just been sold to the American trade, and also that large quantities of skunk skins were received last week from America.

FRANK H. SIMONDS

author of "The Great War." You will know more about the recent advances in Champagne than most of the men who took part when you have read "A Modern Battle," by Mr. Simonds, leading the Editorial Section this morning.

The Sunday Tribune

First to Last—the Truth: News—Editorials—Advertisements

ALLIES HELP SERBS DEFEND NISH RAILWAY; BULGARIA BLOCKADED

GREECE MUST BE FRIEND OR ENEMY, SAY ENGLISH

London, Oct. 16.—"The Morning Post," in an editorial to-day, calls for a decisive stand by the Allies regarding Greece, and the use of coercive measures, if necessary, to insure the safety of the Salonica expeditionary forces and the interests of the Entente powers. It says: "These are straining times, and it is absolutely necessary for us to know who are our friends and who are our enemies. It is not feasible to send an army through a Greece which promises nothing more than to remain neutral, since that promise also might be broken."

"But what is feasible is that Greece should be asked to declare either for us or against us. If she refuses to fight on our side then she is in fact against us. And in that case it remains for the navies of the Entente powers to treat Greece as an enemy. "A blockade of the Greek coast and the seizure of all Greek shipping and of all Greek islands is the logical reply to the refusal of Greece to assist Serbia."

Berlin Claims New Advance Near Semendria.

BULGARS TAKE ZAJECAR FORTS

Threaten Paracin - Nish Line as Offensive Operations Begin.

RUMANIA STAYS OUT

Joins Greece and Tells Central Powers She Will Continue Neutral.

London, Oct. 16.—A blockade of the Bulgarian coast in the Aegean Sea and the announcement that Allied troops were fighting side by side with the Serbs in the defence of the Nish-Salonica railway was the decisive answer of the Entente Powers to-day to the growing menace of Teuton triumph in the Balkans.

BRITISH ATTACK NEAR VERMELLES, BUT FAIL TO WIN

French Assaults in Champagne Also Fail, Says Berlin Report.

London, Oct. 16.—The Germans record the repulse of an attack on their positions northeast of Vermelles, where the British hold the line, and the blocking of French assaults at various points in the Champagne district, notably east of Auberville, where the French are declared to have left more than six hundred prisoners and three machine guns in German hands. German troops are also declared to have carried out a successful move for improving their positions on Hartmanns-Weilerkopf, in the Vosges, and to have foiled a French attempt to retake positions south of Leintrey. Paris reports the repulse of German attacks north of Reillon, in Lorraine, and between the Linge and the Schratzmannelle, in the Vosges.

ALLIED TROOPS FIGHTING WITH SERBS

The news that Allied troops had at last reached Serbia relieved considerable anxiety here, although the fact that they are fighting only twenty miles from the Greek frontier is not reassuring. The prediction of Major Morabit in the Berlin "Tageszeitung" yesterday, that the Allies would be too late to aid in the defence of Nish, despite its boastfulness, aroused a feeling of disquietude.

SEE NEW MOVE AGAINST TURKS

A move against Bulgaria, it is pointed out, while it would also be made by large forces, would have more directly affect the fortunes of the Gallipoli campaign, as it would open up a flank attack on Constantinople by way of the Chatalia Peninsula.

GERMANS ARRESTED FOR AETNA BLOW-UP

Powder Company Electricians Held for Plant Explosion. Kane, Penn., Oct. 16.—Louis Subitzke, chief electrician, and A. Fronholz, assistant chief, at the plant of the Aetna Explosive Company at Emporium, were arrested to-night by Sheriff J. G. Judd of Cameron County and members of the state police, as the result of an investigation of the recent explosion at the plant, which caused the death of five men.

SKUNK SKINS RUN BLOCKADE

Americans Also Buy Half Leipzig's Stock of Fox Pelts. Zurich (via London), Oct. 16.—The Leipzig market reports show that despite the blockade half the entire stock of fox skins, numbering many thousands, has just been sold to the American trade, and also that large quantities of skunk skins were received last week from America.

FRANK H. SIMONDS

author of "The Great War." You will know more about the recent advances in Champagne than most of the men who took part when you have read "A Modern Battle," by Mr. Simonds, leading the Editorial Section this morning.

Both the Austro-Germans and the Bulgarians, whose offensive began in earnest to-day, claim further progress in Serbia, Berlin announcing the capture of positions south of Semendria and east of Pozarevce, while Sofia says that the forts of Zajecar, guarding one of the lateral roads to Nish, have fallen to the troops of King Ferdinand.

The hard pressed Serbians, though beset on three sides, are valiantly defending every inch of their territory, and claim that enormous losses have been inflicted on the invaders. So great have been those suffered by the Austro-Germans, Nish asserts, that von Mackensen has been forced to send hurriedly for reinforcements before he can attempt to force his way up the Morava.

Rumania has joined Greece in declining to enlarge the conflagration in the Near East, by declaring officially that the Rumanian government intends to preserve strict neutrality.

This step followed close on intimations from unofficial German sources that it was high time that Bucharest gave more definite indications of Rumania's stand, in view of the latest developments in the Balkans. From a German source also comes a report that the British and French ministers are leaving Athens. But this report is scouted here, and it is without any other confirmation.

Allied Troops Fighting with Serbs. The news that Allied troops had at last reached Serbia relieved considerable anxiety here, although the fact that they are fighting only twenty miles from the Greek frontier is not reassuring. The prediction of Major Morabit in the Berlin "Tageszeitung" yesterday, that the Allies would be too late to aid in the defence of Nish, despite its boastfulness, aroused a feeling of disquietude.

Major Morabit pointed out the inadequacy of the Nish-Salonica railway to handle anything like the amount of traffic such as would be occasioned by the throwing of a great Allied force into Serbia. The Germans, he estimated, would reach Nish in from six to ten days, while to transport ten divisions of French and British troops to the Serbian capital would require at least two weeks.

The fact that Allied troops have been reported only twenty miles north of the Greek frontier, among the more pessimistic, tends to confirm the conclusions of the Berlin military writer. Some experts here, however, are inclined to believe that instead of attempting to make Nish, for which their chances are only slightly better than for the enemy, the Anglo-French troops will leave the Serbians to fight their own battles in the mountains, while with a quick rush for Sofia, they dispose of Bulgaria.

See New Move Against Turks. A move against Bulgaria, it is pointed out, while it would also be made by large forces, would have more directly affect the fortunes of the Gallipoli campaign, as it would open up a flank attack on Constantinople by way of the Chatalia Peninsula.

From Salonica two railways project, one going northward to Nish, the other branching east and following the Aegean littoral to Dedegatch, from whence it runs directly to Constantinople. Practically the whole of the Bulgarian portion is within from five to ten miles of the sea coast, it is pointed out, and could be dominated by the guns of Entente warships, while Dedegatch and other Bulgarian seaports could be seized and made contributing bases for the campaign against the Turkish capital.

The official announcement of the blockade of this coast, as given out by the official Press Bureau to-day, is as follows: "The vice-admiral commanding the Eastern Mediterranean squadron of the Allied fleets has declared a blockade of the Bulgarian coast in the Aegean Sea, commencing from 6 a. m. on the 16th inst. "Forty-eight hours' grace from the