

Navy Blue Serge



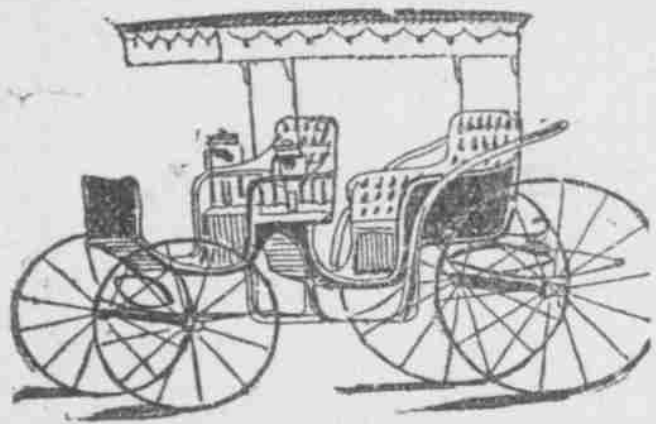
Copyright 1898 by The Stein-Bloch Co.

is certainly the most comfortable, well-looking and serviceable fabric for a man's summer suit, but it is a troublesome fabric to the tailor. It has "ravelly" tendencies which baffle the skill of any but first-class, experienced SERGE TAILORS. The serge suits in our store bearing this label, and which we sell at \$16.50, are made by the most experienced Serge Tailors in America, and are so constructed that no seam can ravel or stretch, and the garment will hold its shape under all circumstances. No one can hope to possess such a suit made to measure at less than double this price.

M. McINERNY.
Clothier.

Merchant and Fort Sts.

Annexation Is So Near



You will now be able to buy Carriages at After-Annexation Prices, which means a saving of the 25 per cent. duty.

We handle nothing but standard goods and can quote you prices that will

DEFY COMPETITION.

A full line of
Fine Double or Single Harness, Saddles,
Whips, Lamps and Lap Robes
Always on Hand.

SCHUMAN'S
CARRIAGE AND HARNESS REPOSITORY.
Fort St., above Club Stables.

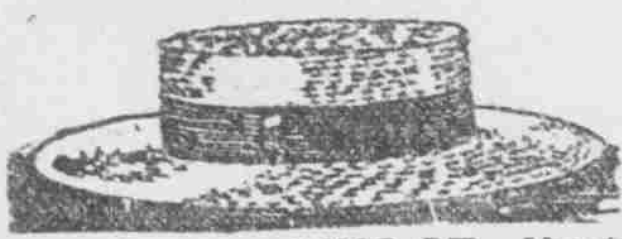
H. E. McINTYRE & BRO.
East Corner Fort and King Streets.
IMPORTERS AND DEALERS IN

Groceries, Provisions and Feed
General Agents for the Sanitarium Brand of Health Foods.

New and Fresh Goods Received by Every Packet from California, Eastern States and European Markets.
Standard Grades of Canned Vegetables, Fruits and Fish.
Goods Delivered to Any Part of the city. Satisfaction Guaranteed.
Island Trade Solicited.
P. O. BOX 145. : : : : TELEPHONE 92.

H. H. WILLIAMS.
Undertaker and Embalmer.

LOVE BUILDING, 534-536 FORT ST.
Telephone 816.
Residence, King St. near Richards: Telephone 849.



K. Isoshima,
HAT MANUFACTURER,
KING ST., Next to Castle & Cooks.

Every Style of Straw Hat Made to Order.

SILK GOODS, LACQUER WARE, CROCKERY WARE,
HANDKERCHIEFS, TIES, ETC.

READ THE ADVERTISER

A FATAL TEA BOX

Coptic's Freight Falls on a Native's Head.

Death Followed in a Short Time.
Man Was a Faithful Laborer.
An Inquest to Be Held.

Keoni Wahinealau, native aged 59 while working as a freight laborer aboard the S. S. Coptic Saturday afternoon received an injury in the head. He died at the Queen's Hospital at 10 o'clock yesterday afternoon. Wahinealau leaves a wife and family. The skull was not fractured unless the break was inside. The wound shown on the scalp was a small one, a mere scratch. It is believed that the rupture of a blood vessel in the head caused death. The man seemed paralyzed. The laborer was in the hold working under the forward hatch. Some freight had been piled above around the edges of the opening. A native in the gang of workers scammed over the pile of temporarily stored merchandise brought up to get at some Honolulu consignments. This native made such a jar on the pile that a tea box fell below. The box struck Wahinealau squarely on top of the head and he was unconscious at once. The man was taken to the hospital without delay. Several times he rallied somewhat, but the sinking spells became longer and longer till one took him out of the world.

Deputy Marshal Chillingworth has summoned these natives to hold an inquest: John Kuaana, Hiona, Kealo, Lawelawe, Pamalo and Naholowaa. The coroner had the jury view the remains and will begin the inquiry at 10:30 this morning. The dead man had lived in Kewalo. He was steady and a hard worker and had been one of the Pacific Mail wharf gang for a long time. Archie Gillfillan and others who knew the man were very sorry to learn of his death.

WAVERLEY CLUB.

Business Transacted at a Meeting of the Managers.

At Saturday evening's meeting of the managing committee of the Waverley Club, Messrs. Conn. Winston and Winant took their seats at the council board for the first time.

The special committee reported memorial resolutions on the death of Theo. H. Davies for presentation at the next quarterly meeting which will be held on July 9th.

Applications for membership must be filed on or before July 2nd and members desirous of being "in good standing" at the meeting must see that their dues are paid up to date.

The club loaned the hall to the Red Men for their installation of officers on Friday, July 1st next.

Although nothing is as yet definitely settled, it is understood that in the removal of the club room to another portion of the Waverley building the change will be more convenient for the general objects and arrangements than at present, although the main hall will not be quite as large for entertaining purposes.

The club will assist in receiving the Boys in Blue.

The Blue Ribbon Meet.

What will in all probability be the last program offered at Cyclomere park, will be put on next Saturday afternoon by the racing wheelmen of the city as a benefit for the Hawaiian Red Cross Society. A very good list has been made up and all the riders are in training. Grand stand tickets will be offered for sale this week at 50 cents. Bleacher admission will be two-bits. Following is the program so far as arranged. Other numbers will be added:

Half mile open, amateur, two heats and final.
Half mile open, professional, one heat.

Exhibition trick riding by Honolulu's Tribby Fowler, Mike Miguel.

Two-thirds mile handicap, amateur, two heats and final.
Two-thirds mile handicap, professional, one heat.

Entries will close Wednesday at 3 p. m. with W. C. Weedon at Bruce Waring & Co.'s office.

Bad management keeps more people in poor circumstances than any other one cause. To be successful one must look ahead and plan ahead so that when a favorable opportunity presents itself he is ready to take advantage of it. A little forethought will also save much expense and valuable time. A prudent and careful man will keep a bottle of Chamberlain's Colic, Cholera and Diarrhoea Remedy in the house, the shifless fellow will wait until necessity compels it and then ruin his best horse going for a doctor and have a big doctor bill to pay, besides; one pays out 25 cents, the other is out a hundred dollars and then wonders why his neighbor is getting richer while he is getting poorer. For sale by all druggists and dealers. Benson, Smith & Co., Ltd., wholesale agents for Hawaiian Islands.

For 30 Days Only!

BEFORE REMOVAL.

We will make a reduction in Suits and Trousers.

\$7. Trousers, \$5.
\$25. Suits, \$18.

These prices are strictly cash prices to reduce our stock before removal.

Medeiros & Decker,
THE HOTEL STREET TAILORS.
Waverley Block.

Mantel Clocks,
Alarm Clocks,
Hanging Clocks.

Gold and Silver Watches,
Gold and Silver Jewelry,
SILVERWARE,
SPECTACLES.

Prices Are Right

Manufacturing and repairing promptly done. Repairing fine and complicated Watches a specialty.

M. R. COUNTER.
507 Fort St.

ESTABLISHED IN 1858.

BISHOP & CO.
—Bankers—

TRANSACTION GENERAL BANKING AND EXCHANGE BUSINESS

Commercial and Travelers' Letters of Credit issued, available in all the principal cities of the world.

INTEREST allowed after July 1st, 1898, on fixed deposits: 3 months 3 per cent; 6 months 3½ per cent; 12 months 4 per cent.

Fine Monument Work.

HAWAIIAN STONE MONUMENTS AND CEMETERY WORK (in detail), CARVING AND INSCRIPTIONS. Prompt and careful service given to all work intrusted to me.

ARTHUR HARRISON.
Queen and Fort Streets.
With Washington Feed Co.

HUSTACE & CO.,
—DEALERS IN—
Wood and Coal

—ALSO—
White and Black Sand
Which we will sell at the very lowest market rates.
Telephone No. 414.

C. L. GARVIN, M.D.
Office—No. 537 King street, near Punchbowl.
Hours: 8:30 to 11 a. m.; 3 to 5 p. m.; 7 to 8 p. m.
Telephone No. 448.

MRS. F. S. SAVANT-JEROME, M.D.
HOMEOPATH.
Office, Progress Block—Rooms 1-4. Corner Beretania and Fort streets. Women's and Children's Diseases. Special studies made of dietetics and physiatrics.

M. W. McCHESENEY & SONS.
Wholesale Grocers and Dealers in Leather and Shoe Findings.
Agents Honolulu Soap Works Company and Honolulu Tannery.

H. HACKFELD & CO., Ltd.
General Commission Agents,
Cor. Fort and Queen Sts., Honolulu.

CHONG FAT & CO.
Contractors: and Builders,
Carpenters and Cabinet Makers.
Furniture of all kinds constantly on hand and made to order.
137 Nuuanu St., cor. Kukui Lane.

L. KONG FEE.
MERCHANT: TAILOR.
623½ Fort St., Opp. Club Stables.
FINE SUITS TO ORDER AT REASONABLE RATES.
Suits cleaned and repaired. Satisfaction guaranteed.

Art Pictures,

FRAMED OR UNFRAMED,

—AT—

King Bros.' Art Store.
110 HOTEL ST.

Japanese: Novelties!

AMERICAN FLAGS,
PAPER LANTERNS
BAMBOO BLINDS,
MATTINGS (New Designs),
PORCELAIN WARE,
LACQUER WARE,
HANDSOME KIMONOS,
PAJAMAS, RUGS, ETC
ALL KINDS OF SHIRTS.
SILKS! SILKS!

Don't buy until you have seen our stock. The Goods and Prices will Suit you.

MURATA & CO.
HOTEL ST., COR. NUUANU.

ALL KINDS OF HATS.
BRANCH HAT STORE, Nuuanu St.
Telephone, 928. P. O. Box 206



A dry scalp causes dandruff—dandruff causes the clothing to become soiled. A minute or two each morning and evening devoted to the applying of our Dandruff Killer does the work.
Put up in one size bottles only.

THE SILENT BARBER SHOP.
PACHECO & FERNANDEZ, Proprs.
Arlington Block, Hotel St.

FOR SALE.
California Horses.

MATCHED TEAMS,
FAMILY HACK AND SADDLE HORSES.
Orders Taken for All Classes of Horses.

STABLES, King St., Opp. Singer's Bakery
J. A. McDONALD.
P. O. Box 422.

—EX "DORIC"—
Grass: Cloth: Handkerchiefs!
SILK HANDKERCHIEFS,

Silk Shawls,
New Porcelain Cups and Saucers,
Decorated Flower Pots,
Rattan Chairs, Matting,
Tea and Dinner Sets,
Fire Crackers.

WING WO CHAN & CO.
210-212 NUUANU ST.

WING WO TAI & CO.
214 NUUANU STREET
Ivory, Lacquer, Silver and Crockery Ware, Screens, Vases, Rattan Chairs, Crepes, Silks, Cigars, Etc., Etc.

TANSAN
Is the Drink If You Want a Good
MINERAL WATER

E. R. ADAMS,
Agent Hawaiian Islands

LEWIS & CO.,
Wholesale and Retail Grocers
111 FORT STREET.
Telephone, 240 : : P. O. Box, 29

WM. G. IRWIN & CO.

—LIMITED—
Offer for Sale:

REFINED SUGARS,
Cube and Granulated.

PARAFINE PAINT CO.'S
Paints, Compounds and Building Papers.

PAINT OILS,
Laccol—Raw and Boiled.
Linsced—Raw and Boiled.

INDURINE,
Water-proof cold-water paint. Inside and outside; in white and colors.

FERTILIZERS,
Alex. Cross & Sons' high-grade Scotch fertilizers, adapted for sugar cane and coffee.

N. Ohlandt & Co.'s chemical fertilizers and finely ground Bone Meal.

STEAM PIPE COVERING,
Reed's patent elastic sectional pipe covering.

FILTER PRESS CLOTHS,
Linen and Jute.

CEMENT, LIME & BRICKS.

AGENTS FOR
WESTERN SUGAR REFINING CO.,
San Francisco, Cal.

BALDWIN LOCOMOTIVE WORKS,
Philadelphia, Penn., U. S. A.

NEWELL UNIVERSAL MILL CO.
(Manf. "National Cane Shredder").
New York, U. S. A.

N. OHLANDT & CO.,
San Francisco, Cal.

RISDON IRON AND LOCOMOTIVE WORKS,
San Francisco, Cal.



A Model Plant is not complete without Electric Power, thus dispensing with small engines.

Why not generate your power from one CENTRAL Station? One generator can furnish power to your Pump, Centrifugals, Elevators, Plovers, Railways and Hoists; also, furnish light and power for a radius of from 15 to 30 miles.

Electric Power being used, saves the labor of hauling coal in your field, also water, and does away with high-priced engineers, and only have one engine to look after in your mill.

Where water power is available it costs nothing to generate Electric Power.

THE HAWAIIAN ELECTRIC COMPANY is now ready to furnish Electric Plants and Generators of all descriptions at short notice, and also has on hand a large stock of Wire, Chandeliers and Electrical Goods.

All orders will be given prompt attention, and estimates furnished for Lighting and Power Plants; also, attention is given to House and Marine Wiring.

THEO. HOFFMAN, Manager.

Monuments and Headstones.

The undersigned is prepared to do CEMETERY work of all kinds, and supply MONUMENTS and HEADSTONES of which he has a great variety of the latest and most artistic designs, and will also supply stone coping separately for surrounding cemetery lots.
Estimates given in Marble, Granite, Hawaiian Stone, etc.

FRED. HARRISON.