

# To Let OR Lease

The following described properties upon moderate terms:  
Premises on the Pauoa road, at present occupied by A. T. Atkinson. Possession given Nov. 1st.  
Store in Orpheum block on Fort street.  
Land of the area of one acre, situated on the corner of South and Halekuanila streets, and suitable for storage purposes, or for a building site for warehouses or factory.  
Building site at Kamohili, fronting on proposed extension of Rapid Transit to Kaimuki, area one acre.  
Three building lots on Kaalhee avenue and opposite the Experimental Station at Makihi.  
Rice land at Aiea, Ewa.  
Also other lands suitable for agricultural and other purposes in different parts of this island.

Apply to

**Kapiolani Estate, Ltd.**



## Conklin's Self-Filling Pen

Imperial, Cal.,  
Feb. 19th, 1902.

The pen recently ordered came to hand in good condition.

The only objection I have found to it is the temptation to waste a great deal of time showing other people how simple a matter it is to fill the holder, and how beautifully and cleanly it works.

Very truly yours,  
E. F. HOWE,

Editor "Imperial Press,"  
Miami, Fla.,  
Feb. 22d, 1902.

I consider the "Conklin Self-Filling Pen," the incomparable, ideal pen on the market of the world today.

F. W. E. PESCHAU, D.D.,  
President of the Ohio State  
Luther League.

**The Pen that Fills Itself**  
For sale by  
**Wall, Nichols Co.,**  
LIMITED.

## THE WONDER

Ladies wishing  
**Fine Millinery**

should go to the Wonder, a new store just opened by a lady from the States. You will find the latest and most up-to-date styles. Nothing but the very best material used and prices to suit all. Call and you will be convinced, that you can do better at The Wonder than you can do anywhere else.

MRS. CRESSMAN, Propr.  
248 Beretania, oppo. Hawaiian Hotel.

## OAHU ICE & ELECTRIC CO.

Ice Delivered to any part of the  
City.

Island orders promptly filled.

**Hoffman & Markham,**

Telephone Blue 1111. P. O. Box 688  
Office: Kawaile.

**Rupture**  
Dr. Pierce's Electric  
is a Marvel. Nothing like  
it. Best Remedy on earth  
and a Genuine Cure for Rupture.  
World-renowned. 27 improvements.  
If ruptured investigate at once.  
Call or write for "BOOKLET No. 1."  
MAGNETIC E. TRUSS CO., 33 West 24th Street,  
New York, N. Y., or 206 Post Street, San Francisco, Cal.

## G. Q. YEE HOP & CO.

**KAHIKINI MEAT MARKET  
And Grocery.**

FRUITS AND VEGETABLES.  
Beretania Street, corner Alakea.  
Phone Blue 411.

## Grand Tournament at BOWLING PARLORS

**PING PONG**

**SHAVING 15 cents**

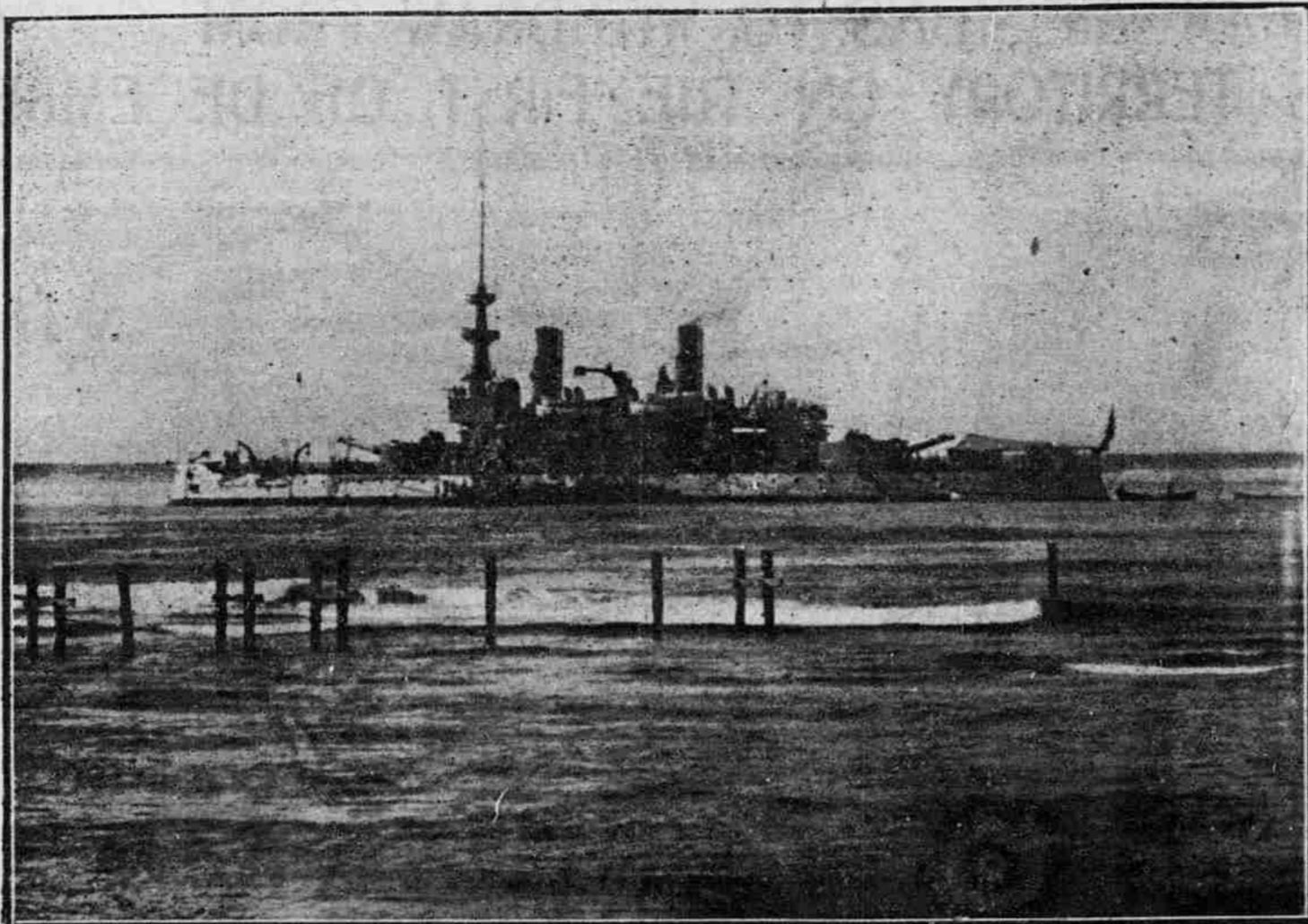
—AT THE—  
**Pantheon Shaving Parlors.**

CHAS. HUMMEL,  
Manager.

**NOTICE.**

EXPERIENCED CHINESE COOKS,  
waiters, house servants, yard-men and  
laborers. Persons requiring the above  
services inquire at The Hawaiian Chinese  
Agency Office, No. 15 King St., between  
Benson and Smith Sts. 6253

# COALING BATTLESHIP OREGON OUT AT THE ANCHORAGE



(Advertiser Telephoto.)

The battleship Oregon being coaled at the anchorage. The above is a remarkable photograph as it was taken with a telescopic camera which made the battleship appear to be within a stone's throw of the boat house when in reality the big war vessel was at least a mile distant. This sort of photographic work was very useful to the British during their extensive campaign work against the Boers in South Africa.

## HOW BLUE JACKETS PRODUCE MUSIC

The "Sailor's Piano" is the  
Favorite Apparatus  
in Use.

"Speaking of Father Chidwick's concerts aboard the cruiser New York," said a naval man yesterday, "reminds me of the fact that very few people know what hidden talent there is in the way of musicians on board of our naval vessels. Many people imagine that the only time a sailor can dig up any music is when he is about 'half tanked' in a small disreputable saloon and is permitted to play a broken down, wheezing piano in one of the private parlors. That's not so.

"Now take the New York for instance. In addition to the regular enlisted men aboard who are there as band players there can be found men who can play almost any musical apparatus ever heard of. Yes, we have even a man who can play one of your 'hookalales' as you call it. But leaving talent aside for a moment the best known musical instrument aboard is the 'jack tar piano.' What's that? Why it is one of the homeliest little concerns known of unless it happened to have been made in some Yankee town where dyes are plentiful. I refer to the accordion. Almost every man in a warship can play on one of these instruments and I can assure you that 'Home, Sweet Home' and 'We Don't Go Home Until Morning' sounds just as good on that as it would sound to many people if played on a church organ. Will it bring tears if played right? Well, now you think a minute and then tell me if you think that we have men in the navy of Uncle Sam nowadays for the purpose of crying. Cut that idea out of your box.

"But as to singers. That is where the boy of the sea shines. He can sing anything and everything in any old kind of a tune that suits those who are listening to it. He don't sing the old songs of 'Heigh, Ho' and 'Buckets of Blood' but has now adopted the popular airs of the day, and the poor ones are dropped just as quickly in the navy as they are on shore. Although the navy boys are singers they are not whistlers for whistling is strictly tabooed on a man-of-war with the exception of the bosuns. They whistle—that's what they are paid for.

"Now that I've got started I might as well tell you a thing or two about blue jackets. They are not the ignorant lot of grog drinkers that some people ashore think them. They, the majority of them, are linguists, can speak in a rough manner two or three languages. As far as education goes they are way ahead of lots of fellows who go out into the world with high school or college educations for in the matter of geography alone they are way on top. They know almost every place under the sun, how large it is, what its resources are, and its political importance in the make-up of the world although they of course must be forgiven if they magnify the importance of their own country by about five and a half million times.

"But we were talking about music. There is just one thing more I wish to state. I have known many fellows to get such powerful exercise for the lungs while at sea and to actually train their own voices in such a way that when they stepped ashore with discharge in pocket they readily obtained valuable positions in the stage world.  
"What am I turning around and standing so straight for? Well, the bugle sounded the salute to the colors. I'm facing them. See, all the men on the New York are doing the same. Good practice, isn't it? Well, so long."

## Busy Naval Scene Outside the Reef.

Man-of-War Made Her  
Famous Run From  
Puget Sound.

Yesterday was a very busy day on the battleship Oregon out at the anchorage. Early in the morning the U. S. tug Iroquois got alongside the battleship with the first coal laden barges and the entire day was spent in contenting with the swells and placing coal into the vessel's bunkers.

Many waterfront men say that Captain Burwell got his vessel very close to the reef. The big battleship is nearer the coral banks than any vessel has ever been anchored without getting into serious difficulties.

Many people who visit the naval station now are asking many questions about the Oregon.  
"Where did she start from when she made her famous trip around the Horn?"

"Well," replied the naval man, "she started from the dry dock at Puget Sound and back of her start there is a little story. I believe that the present captain of the Oregon, who was then commandant of the Puget Sound naval station, was the man responsible for the building of the great dry dock there. The bulldog fighting ship Oregon was spruceing up there and had she not had a dry dock in which to be immediately cleaned she would have been unable to make that remarkable voyage against time around the Horn. As it was she arrived in time to participate in the fight. Her trip was watched by and won the admiration of naval men the world over."

## Schooner Herman at Apia.

Southard Hoffman's brother was not marooned on a South Sea island. Mr. Hoffman received a letter from his brother, by the Ventura's mail, stating that the treasure schooner Herman, Captain Brown, had arrived safely at Apia after a rough passage from Honolulu and that they received word there that Sutton, who holds power of attorney for all of the members of the syndicate controlling the treasure party, had gone on to Auckland and would await the schooner's arrival there. When the Herman left here Brown declared that he would maroon or shoot Hoffman and that young Sharretts, another of the party, might share the same fate, but matters were evidently settled in some way after the schooner got to sea. Sutton will now return from Auckland to Apia and the affairs of the party may be settled up in such a way that the little schooner can winter in Sydney and then start in the spring on her cruise to Captain Brown's treasure island.

## On a Long Voyage.

The small schooner Kodiak, a missionary boat bound from San Francisco to Manila, is anchored off port. The vessel arrived yesterday morning, her captain anchoring outside to secure supplies and have a blacksmith do some work on her rigging. The schooner was twenty days on the passage here from San Francisco.

## QUEEN SAILED ON LINER VENTURA

Big Crowd Assembled at the  
Wharf to Bid Her  
Aloha.

The Oceanic liner Ventura arrived from the Colonies early yesterday morning and left at three o'clock in the afternoon with a large addition to her passenger list through those getting on the steamer at Honolulu. Among those departing were the ex-Queen and her suite. This party is on the way to Washington and their departure brought hundreds of the Queen's friends to the wharf to bid her aloha while the Territorial band played the steamer away.

Queen Liliuokalani and her party were loaded down with leis. So many were put on her as she stood at the rail that from time to time she had to take a few off to make room for the ones that were constantly coming along. "I think a wagon load of leis has passed up that gangway to the Queen already," said one lady on the wharf.

Her Majesty was smiling and was kept bowing for a half an hour to her many friends ashore.

"Why is it that one never sees many people crying as they bid their friends good-bye when leaving Honolulu by steamer," asked one man of inquisitive turn of mind.

"Well," responded another, "I guess you have not been here very long, or you would know that everything is done pleasantly in that line here. We smile at our friends when they are leaving and ask them to return quickly and the band over yonder sets up such sweet tunes that one feels more like being pleasant than crying. That's the reason. See, there are more leis for the Queen."

When the steamer left the wharf there was a great waving of hats and much bowing and the figure of the Queen could be seen plainly at the rail waving a cheerful good-bye to her friends.

The vessel made the usual stops on the way from Sydney, including a call at Fanning Island, where the latest news from Victoria was received by cable and sent on to Honolulu. It was reported there that the cable was working splendidly.

The vessel had but a small cargo from the South but carried quite a number of passengers, among whom were the theatrical people, Mr. and Mrs. C. Harris, Mr. and Mrs. J. D. Ashley and child, and Leo Derenda.

Because of the departure of the Queen a large number of people were permitted to board the steamer just before her departure and friends of those leaving simply swarmed over her decks.

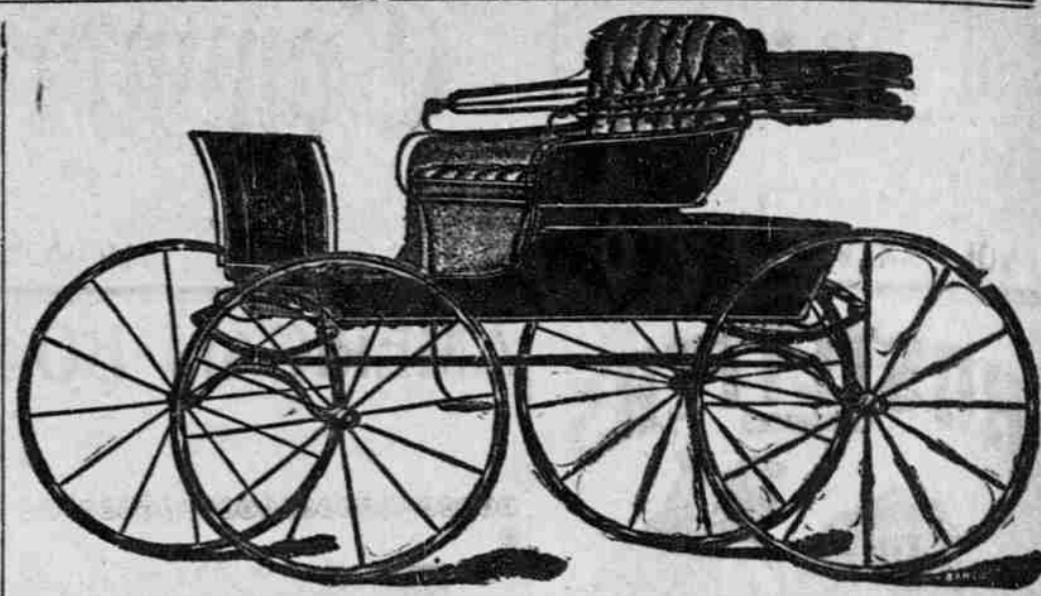
## Sterling the Painter

Has added to his Paint Shop a large stock of

## WALL PAPER

Also an Experienced Paper Hanger as salesman, who will be pleased to give information about Paper Hanging and Decorating.

Competent Paper Hangers  
employed and always on hand.  
Reasonable Prices.  
SAME OLD STAND, UNION STREET



## Low Wheel Buggies at Cost

To dispose of our stock of Low Wheel Rubber Tired Buggies, we will sell them at cost,

Former Prices	\$160.	Now	\$125.	
"	"	175.	"	135.
"	"	200.	"	160.
"	"	250.	"	200.

Note these figures—Nothing like them were offered before. Substantial reductions on all other vehicles. Harness, Whips, etc. likewise reduced.

## Pacific Vehicle & Supply Co., Ltd.

Beretania St., Near Fort.

## REMOVED . . .

**W. W. Ahana Co., Ltd.**

**MERCHANT TAILORS**

FROM NUUANU STREET TO

WAITY BUILDING, KING STREET

Phone Blue 2741

Opposite Advertiser Office

**New Store New Goods New Styles  
Prices Reasonable**



## Felt Hats

Good Sizes

Sold at lowest prices. Call and see our stock at

## K. ISOSHIMA

King Street, next to Castle & Cooke.

WE are taking extra care in turning out a superior article for family trade. The syrups cost more than twice as much as those ordinarily used. Use a special bottle with hard rubber stopper so that there is no metallic taste thus insuring absolute purity. Send in a trial order to—

## HAWAIIAN SODA WORKS

Emma and Vineyard Streets. Phone Blue 1871.

## YOU

are looking for something good, and we have it.  
8 year old Cunningham, in the wood \$4.00 per gallon.  
7 year old Monongahela, \$3.00 per gallon.

## CELEBRATED ASTI WINES

Vintage of '96 and '97  
Clarets, from . . . . . 50c a gallon up.  
Ports. . . . . 75c " "  
Tokays. . . . . 75c " "  
Angelicas, . . . . . 75c " "  
Madeiras, . . . . . 75c " "

## We are not Rectifiers

Our goods direct from the distillery to the consumer.

## Gomes & McTighe,

Wholesale Liquor Dealers, 93 and 95  
King St., Honolulu, Territory of  
Hawaii. Telephone Main 140.

## Good Things Just To Hand

"Force"  
The latest health food: Has marvelous creating power.

Lambs' Tongues  
In jars, so nice for luncheons.

Beech Nut  
Sliced Beef  
In jars, exquisite always.

## LEWIS & CO.

Leaders in Groceries.  
240-Two Telephones—240  
1300 FORT STREET.

## Keystone-Elgin WATCHES

DURABLE AND ACCURATE

The Keystone Watch Case Co.  
ESTABLISHED 1855 Philadelphia, U.S.A.  
America's Oldest and  
Largest Watch Factory  
For sale by  
The Principal Watch  
Dealers in  
Hawaiian Islands

## COTTON BROS. & CO.

ENGINEERS AND GENERAL CON-  
TRACTORS.  
Plans and Estimates furnished for all  
classes of Contracting Work.  
Boston Block, Honolulu

## Triangle Grocery Store

Corner of King and South Streets.  
Telephone White 3091.

Groceries and Provisions

Golden Gate Flour  
Libby's Brand Meats  
Best Kona Coffee  
Choice Creamery Butter

Goods delivered to any part of  
the city.

## Waverley Shaving Parlors

Corner Bethel and Hotel Streets,  
MRS. D. W. ROACH,  
CHAS. A. BIDDING,  
Proprietors.