

From S. F.:
Chiyo Maru, Sept. 6.
For S. F.:
Ventura, Sept. 6.
From Vancouver:
Makura, Sept. 7.
For Vancouver:
Zealandia, Sept. 10.

Honolulu Star-Bulletin

2:30
Edition

Evening Bulletin, Est. 1882, No. 5322
Hawaiian Star, Vol. XX, No. 16373

11 PAGES. HONOLULU, TERRITORY OF HAWAII, WEDNESDAY, SEPT. 4, 1912. — 14 PAGES.

PRICE FIVE CENTS

PROGRESSIVES WIN ONE STATE, LOSE IN ONE

NAVY GIVEN WIRELESS FOR OAHU

One of World's Most Powerful Plants to Cost \$200,000 Is Authorized

Before the end of the present fiscal year Oahu is to have one of the six most powerful wireless stations in the world. It will be located at Pearl Harbor, and will be built and operated by the United States Navy. The cost of construction and equipment will be approximately \$200,000.

As far back as last January it was announced that the Navy Department was planning a chain of wireless to link together its stations in the Pacific and the Far East, and some months ago the Secretary of the Navy sent recommendations to congress covering this project. It was known at that time that Honolulu was included in the circuit, but up to now there has been whether or not the necessary funds were appropriated by the national legislators.

By yesterday's mail Admiral Cowles commandant of the Honolulu naval station, received a communication from the Bureau of Steam Engineering, of the Navy Department, stating that the present naval appropriation act carried funds for the erection of six wireless stations and that one of these was to be erected on Oahu, designed primarily for inter-communication with small stations at San Francisco, Guam, and Tutuila Samoa. The commandant is directed to submit a full report on an available site as soon as possible, as, according to the letter, the station is to be built during the present fiscal year. The station is to be a 200 kilowatt one, and when it is taken into consideration that the present navy wireless in only 3 1-2 k. w. and that the Poulsen station now operating with San Francisco in only 3 k. w., the tremendous power of the proposed naval plant becomes apparent.

According to the plans announced by the Secretary of the Navy when the wireless chain was first proposed, the Pearl Harbor station will cost \$200,000. Originally only five such stations were projected, but it appears from the latest communication that six are to be built, making a total appropriation of \$1,200,000 for the work. The local station will have a tower 600 feet in height, and day or night will be able to send out radiograms which will easily reach the San Francisco station, or the Philippines via Guam.

The public works officer will make the necessary investigations and surveys, but it is a foregone conclusion that the station will be located on some part of the Pearl Harbor naval reservation, because the land is government-owned, and because conditions there have been pronounced first class for wireless by technical experts. Another strong reason for placing the station at Pearl Harbor is that power can be secured from the naval power plant now being installed. This will have a capacity of 2000 h.p., and the 270 h.p. represented by 200 kilowatts, can be given without any trouble.

New Law on Wireless.
With the news that Oahu is to be one of the leaders of the world in wireless, comes a copy of a congressional act passed August 13, which regulates the operation of wireless by commercial companies. Under the new law, which becomes effective four months from date of passage, commercial concerns must not transmit.

(Continued on Page 2)

DANCE AT MOANA TONIGHT

The management of the Moana Hotel announce a dance to take place this evening, September 4th, in honor of the first-cabin passengers of the transport Logan. Local Army and Navy and society folk are cordially invited.

Auto Repairs

Special attention given to CARBURATORS and MAGNETOS. All work guaranteed.
M. E. HENDRICK, LTD.
Merchant & Alakea Sts. Phone 2648

BENCH AND BAR PAY HIGH TRIBUTE TO MEMORY OF THE LATE JUDGE HARTWELL



FRANK E. THOMPSON

President of the Bar Association, who presented resolutions in memorial to Judge Hartwell before the justices of the supreme court assembled at the services this morning.

Solemn Services In Honor of Hero

Made impressive by the eulogies, sincerely spoken, of men who had been his associates more or less intimately during the period of nearly half a century that he lived in Hawaii, the memorial service honoring the late Judge A. S. Hartwell was held in the Senate chamber of the government building this morning, with the justices of the Supreme Court presiding.

Hawaii's bench and bar were represented by nearly 100 attorneys and judges, and eight of these arose to testify to the love and respect in which the memory of the departed jurist and Civil War veteran is held. Among those present, in addition to the justices of the Supreme Court, were U. S. District Judge Dole and Clemons, Circuit Judge H. E. Cooper, Governor Frear and most of the Territorial officials, and a large number of Honolulu's prominent business men.

Tribute of Women.
The tribute of the women of the Territory to the great jurist's memory was acknowledged by the presence also of Mrs. Frear, wife of the Governor; Mrs. J. W. Cathcart, and Mrs. Adams, wife of the prominent Chicago physician and mother of Mrs. Walter Dillingham.

BARS GO UP ON UNDESIRABLES FROM MANILA

Crooks Gathered in Police Net on Luzon; Must Go on to Ma'nland

Listed as "indigent citizens" en route from the Philippine Islands to the United States, a score of men, Americans are traveling under close guard as steerage passengers in the United States Army Transport Logan. A "jam" jammed to capacity with convicts and others who are alleged to have committed crimes against the Federal or Insular governments, the Logan during her stay at Honolulu will be more than carefully guarded in order that several of the so-called "undesirables" are not given a chance to take French leave of the troopship at this port.

A round-up of a number of men. (Continued on page 2)



JOHN W. CATHCART, WHO SPOKE FOR THE BAR



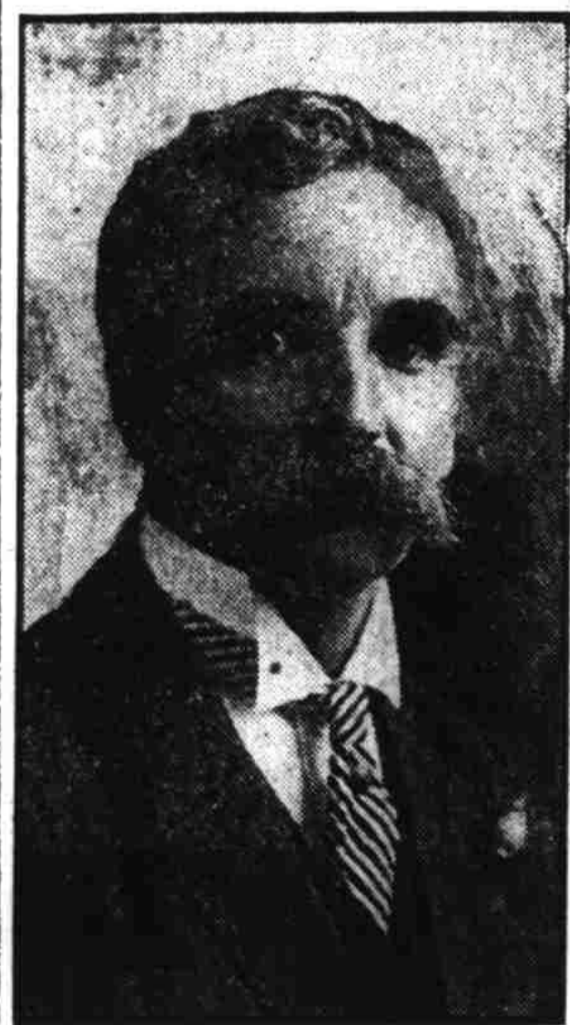
JUDGE DOLE'S TRIBUTE TO JUDGE HARTWELL

"As a lawyer he possessed great resource, a dogged determination, and withal a stern, unquestioned integrity. His was a great reserve, yet he had a warm and tender heart; knew no fear of obstacles or dangers; bore many scars as a testimonial of his brave gallantry as a soldier, and lived an unblemished public and private life. Such men scarcely need eulogy. They are the true gentlemen."

for court business to proceed.

As soon as all were seated again Attorney Frank E. Thompson, president of the Hawaiian Bar Association, arose and, addressing the court, announced that the Bar Association had adopted resolutions which it desired to present to the court and asked that they be spread on the minutes. He then read the resolutions, which are given in full below. Then, in quick succession, the following members of the bar arose and endorsed the resolution: Judge Sanford B. Dole, representing the bench of Hawaii; Attorney General Alex. Lindsay, representing the Territorial government; J. W. Cathcart, representing the bar; Cecil Brown, C. W. Ashford and Judge A. S. Humphreys, speaking

(Continued on page 3.)



ATTORNEY C. W. ASHFORD

The decorations for the occasion were unostentatious, such as it was deemed Judge Hartwell would wish. As a mark of mourning, the bench in front of the Supreme Court justices was draped in black and white.

DR. HAYNES CHARGED WITH IN-SUBORDINATION AND DISRESPECT TO DR. VANS AGNEW

Called Superior Ignorant and "Vet" is Courtmartialed

Special Star-Bulletin Correspondent
SCHEDULED HARRA'KS, Sept. 4
The opening day's trial by court-martial of Dr. James R. Haynes, Fifth Cavalry, was devoted by the Judge Advocate to arraignment of the accused, and making the preliminary developments for the prosecution's attack.
The charge alleges conduct to the prejudice of good order and military discipline and is supported by the specifications. Eight of these are based on an official letter written by Veterinarian Haynes to the Adjutant Fifth Cavalry on July 14th of this year. In this letter it is alleged that Dr. Haynes made free use of language deemed by the authorities to be chargeable as "insubordinate, disrespectful and subversive of discipline."
The objective of the strenuous language was Dr. Vans Agnew, who is Dr. Haynes' superior in army service. It is apparent that Vans Agnew ob-

FISHER NAMES MATTERS WHICH HE WILL PROBE

Comes to Investigate Home-stead Question and Kuhio's Charges Only

Just before leaving the mainland for Hawaii, Secretary Fisher set forth his purpose in visiting the Hawaiian Islands as twofold. His aim, he said, was:
First—To investigate the administration of the home-stead laws in the Territory of Hawaii; ascertain whether or the many complaints of mismanagement are well founded, and to secure data on which to recommend remedial legislation if that be necessary.
Second—To investigate charges made against the administration of Governor Walter Frear by Delegate Kalaniana'ole. He proposes to have the Governor and Delegate meet him

(Continued on Page 3)

CALIFORNIA IN BULL MOOSE CAMP

Roosevelt Electors Win--Taft Men Threaten Court Proceedings--Republican Victory in Vermont

[Associated Press Cable]
SAN FRANCISCO, Cal., Sept. 4.—Progressives in California have won a sweeping victory in the State primaries, according to the figures that have come in from yesterday's balloting. It appears that the entire State was swept by the Bull Moose forces. Roosevelt electors seem sure for the State. It was learned today that the Taft forces will contest the election in the courts because of the presence of the Roosevelt electors on the Republican ticket.

G. O. P. Majority Cut Into

[Associated Press Cable]
BURLINGTON, Vt., Sept. 4.—For the first time in the history of Vermont, the State has failed to return a Republican majority in a general election, although giving a plurality.
Fletcher, Republican candidate for Governor, has won, but the G. O. P. vote has been cut into. Howe, the Democratic candidate, received 19,472 votes, while Fletcher was given 25,072. Metzger, Progressive, ran third, getting 15,070 votes. The Progressives have been claiming the election.

Woman's Suffrage Is Loser

[Associated Press Cable]
COLUMBUS, O., Sept. 4.—Woman's suffrage lost heavily yesterday in the state-wide voting on amendments to the State constitution. The initiative and referendum were adopted.

WILSON SEES ENCOURAGEMENT FOR BUSINESS IF WINS

[Associated Press Cable]
SEAGIRT, N. J., Sept. 4.—That the result of the presidential election means encouragement of business and a rest for the country from its political and industrial turmoil is Governor Wilson's comment on the prospects for a Democratic victory.

ROOSEVELT PREDICTS VICTORY IN VERMONT LATER

[Associated Press Cable]
OTTUMWA, Ia., Sept. 4.—Although the Progressive candidate ran third in the Vermont gubernatorial contest, Colonel Roosevelt says he is confident he will carry the State in the presidential election next November. He made this prediction here today. He is on a stumping contest.

3000 Acres On Maui Sold; May Mean New Plantation

Land Purchased by Three Companies for Sum of \$58,000

A single series of deeds entered for record at the Registry of Conveyances today transfers nearly three thousand acres of land on Maui to four corporations for considerations aggregating \$58,000. The deeds were executed by Julie Grinbaum, widow of the late M. S. Grinbaum, by her attorney in fact, F. M. Swanzey, to Hamoa Agricultural Co., Ltd.; Kawaipapa Agricultural Co., Ltd.; Haneoe Agricultural Co., Ltd., and Honomaele Agricultural Co., Ltd., respectively, all of which corporations were formed more than a year ago, with due respect to the clause in the Organic Act which prohibits the ownership of more than one thousand acres of land in this Territory by a single corporation.

There is a possibility of the formation of a new sugar plantation by the companies named in a partnership like that of the Maui Agricultural Co., which handles the operations of three corporations on Maui.
Mr. Swanzey, attorney in fact of the grantor in these land deals, was asked today if the recording of the deeds signified the starting of a new plantation. He replied:
"The companies in question are thus far merely land companies. They have passed the first anniversary of their birth."
"As to the starting of a plantation, that depends on many things, such as the labor question, the price of sugar, etc. Kaeleku plantation is already using some of the lands."
Hamoa was one of the older Maui plantations, adjoining Hana plantation now, for several years past, Kaeleku Sugar Co.'s plantation. The ruins of Hamoa sugar mill are still visible to the traveler along the Hana ocean front.

FERN APPROVES POLITICAL MOVE BY SIGNING BILL

Mayor Fern yesterday afternoon signed the ordinance authorizing the board of supervisors to hire another clerk. This ordinance, which was opposed by local businessmen and a minority of three in the board of supervisors itself, is avowedly the first step in the establishment of a municipal paper. The supervisors who jammed it through say they will try to get the next legislature to make provision for a municipal paper.

thus far merely land companies. They have passed the first anniversary of their birth.

"As to the starting of a plantation, that depends on many things, such as the labor question, the price of sugar, etc. Kaeleku plantation is already using some of the lands."

Hamoa was one of the older Maui plantations, adjoining Hana plantation now, for several years past, Kaeleku Sugar Co.'s plantation. The ruins of Hamoa sugar mill are still visible to the traveler along the Hana ocean front.

Distribution of Land.
Mrs. Grinbaum's grant to Hamoa Agricultural Co. comprises twelve distinct parcels and interests, aggregating 53.81 acres, and the price is \$10,500.

To Kawaipapa Agricultural Co. go twenty-six parcels and interests aggregating 559.59 acres, 3 roads and 20 perches, the consideration being \$11,100.

Haneoe Agricultural Co.'s purchase comprises thirteen parcels and interests, containing a total of 944.93 acres, and the price is \$18,800.

Honomaele Agricultural Co. becomes seized of six parcels and interests, the largest being ten-twelfths of 9900 acres and the aggregate of all 861.75 acres, for a consideration of \$1,200.

The total acreage passing in these deeds is a fraction over 2910 acres, and the total of prices is \$58,000.

When asked this morning as to his reasons for signing the bill despite the opposition, Mayor Fern said that if the next board doesn't want the clerk, it can get rid of him, as it is not bound by the acts of the present board.

The majority of the board which insisted on the enactment of the measure has been openly charged with trying to secure an official publication as a political maneuver. Arnold, Low and Dwight voted against the ordinance and there was some hope that the mayor would veto it, as he expressed an opinion only a few days ago that the bill is "a bad thing" but he disposed of doubt as to his real attitude yesterday by signing the bill.

SUGAR

SAN FRANCISCO, Cal., Sept. 3.—Sugar: 96 degrees test, 4.30 cents. Previous quotation, 4.23 cents. Beets: 88 analysis, 11s. 6d. Parity, 4.43 cents. Previous quotation, 11s. 5d.