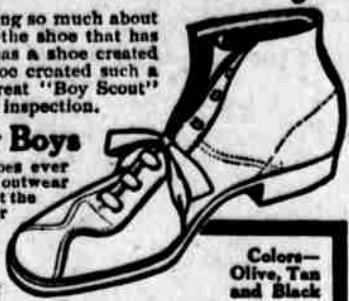


# Boys! Here's the Shoe that Captured the Country!

Here's the shoe you have been reading so much about in the magazines—the "Boy Scout"—the shoe that has taken the country by storm. Never has a shoe created so much excitement—never has a shoe created such a sudden tremendous demand as the great "Boy Scout" Shoe now in town and ready for your inspection.



## Wonders for Lively Boys

"Boy Scouts" are the "classiest" shoes ever made for rough and tumble wear. They outwear two or three pairs of ordinary shoes. Just the ticket for baseball, running, jumping or any outdoor sport. Every boy who has seen them is crazy for a pair.

## The "BOY SCOUT" Shoe

The soles are made from Elk Solo Leather—the toughest and best sole leather there is. Our secret process of tanning makes them wear from two to three times as long as common soles. And they're the best shoe you could get for your feet, too. They're made especially for growing feet and feel fine the minute you put them on. The uppers are made from Elk Skin Leather and are as soft as gloves. There are no linings to rip apart, tear

your stockings and hurt your feet. "Boy Scouts" are the coolest and most beautiful shoes you could buy. The soles are put on so good you can't pull them loose no matter how rough you are. Just tell your folks about them, boys. They'll want you to have a pair. Maybe your pa will want a pair, too. Ask him to bring you in and look at them himself. He'll be just as delighted as you are.

Colors—Olive, Tan and Black

## Good Luck Charm FREE

"You get a Swastika" Good Luck Charm with every pair of "Boy Scout" shoes you buy. And it's a dandy. Looks something like the picture in the corner of this ad, only it is bright and shiny, like a gold piece—and it stays bright, too. Makes fine prizes for winners of ball games, races, etc. "Boy Scouts" are selling fast. Better call right away; if you don't you'll have to wait until we can send for more.

Prices: Boys, \$2.75; Men's, \$3



# M'INERNEY SHOE STORE

## WHEN IN NEED OF Paper

of any description

Phone 1410

HONOLULU'S LARGEST PAPER HOUSE

AMERICAN-HAWAIIAN PAPER & SUPPLY CO., LTD.

Geo. G. Guild - Manager

## Does the Holiday Time Find You Short of Money?

Suppose that last year you had opened a SAVINGS ACCOUNT and had systematically deposited some part of your income?

You would have a snug sum to draw on just now, wouldn't you? Why not be ready for Christmas next year?

One dollar opens an account.

## BANK OF HAWAII, Ltd.

Capital and Surplus - \$1,000,000

## Have You Read Our Ad in the Morning Paper?

Phone 1884

Island Investment Co., Ltd.

## Commercial Union Assurance Co.

Fire and Automobile

Total Resources - \$79,040,000

Losses Paid - \$167,911,536

## C. Brewer & Co., Ltd.

General Agents, Territory of Hawaii

## INSURE

PRUDENTIAL

What is the use of paying

Twenty Premiums

for a participating policy when you can buy a non-participating policy for only

Fifteen Premiums

at a lower rate?



Hawaiian Trust Co., Ltd., 923 Fort Street

## Jas. W. Pratt

REAL ESTATE, INSURANCE, LOANS NEGOTIATED

Stangenwald Building

## Williamson & Buttolph

Stock and Bond Brokers 83 MERCHANT STREET Phone 1482 P. O. Box 528

## Honolulu Stock Exchange

Friday, Dec. 8.

NAME OF STOCK	Bid	Asked
<b>MERCANTILE</b>		
C Brewer & Co.	10 1/4	10 3/4
<b>SUGAR</b>		
Ewa Plantation Co.	30 1/4	30 3/4
Hawailan Agric. Co.	20 1/4	20 3/4
Hawailan Sug. Co.	40 1/4	40 3/4
Honolulu Sug. Co.	11 1/4	11 3/4
Honokaa Sug. Co.	11 1/4	11 3/4
Haukapu Sug. Co.	19 1/4	19 3/4
Hutchinson Sug. Plant	18 1/4	18 3/4
Kahuku Plantation Co.	20	20
Kaunohi Sug. Co.	20	20
Koloa Sug. Co.	6 1/4	6 3/4
McBryde Sug. Co.	7	7
Oahu Sug. Co.	12 1/4	12 3/4
Onomea Sug. Co.	47 1/4	47 3/4
Olas Sug. Co. Ltd.	5 1/4	5 3/4
Pauahau Sug. Plant Co.	22 1/4	22 3/4
Pacific Sugar Mill	125	125
Pala Plantation Co.	170	170
Pepee Sug. Co.	20 1/4	20 3/4
Pioneer Mill Co.	117 1/4	117 3/4
Wailua Agr. Co.	117 1/4	117 3/4
Wailuku Sug. Co.	38 1/4	38 3/4
Waimanalo Sug. Co.	38 1/4	38 3/4
Waimoa Sug. Mill Co.	190	190

<b>MISCELLANEOUS</b>		
Inter-Island Steam N. Co	150	150
Hawaiian Electric Co.	125	125
Hon. R. T. & L. Co. Pref	125	125
Hon. R. T. & L. Co. Com.	17 1/2	20
Mutual Telephone Co.	17 1/2	20
Oahu R. & L. Co.	30	30
Hilo R. & L. Co. Pfd.	8	8
Hilo R. & L. Co. Com.	20 1/4	20 3/4
Hon. B. & M. Co.	40 1/4	40 3/4
Hawaiian Irr. Co. Ltd.	40 1/4	40 3/4
Hawaiian Pineapple Co.	41 1/4	41 3/4
Tanjong Ok R.C. pd up	21	21
Pahang Rub. Co. (Pd)	21	21
Pahang (Ass. 40% Pfd)	21	21

<b>BONDS</b>		
Haw. Ter. 4 1/2 (Fire Cl.)	100	100
Haw. Ter. 4 1/2	100	100
Haw. Ter. 4 1/2	100	100
Haw. Ter. 4 1/2	100	100
Cal. Beet Sug. & Ref. Co.	100	100
Hon. Gas Co. Ltd., 6%	100 1/4	100 3/4
Honolulu Ditch Co.	100	100
Upper Ditch Co.	100	100
Haw. Irr. Co. 5%	100	100
Haw. Com. & Sug. Co. 5 1/2	100	100
Hilo R. & L. Co. Issue 1901	100	100
Hilo R. & L. Co. 5 1/2	100	100
Honokaa Sug. Co. 4 1/2	100	100
Hon. R. T. & L. Co. 5 1/2	100	100
Kaunai Ry. Co. 5%	100	100
Kohala Ditch Co. 6%	100	100
McBryde Sug. Co. 5%	100 1/4	100 3/4
Mutual Tel. Co.	100 1/4	100 3/4
Oahu R. & L. Co. 5 1/2	100 1/4	100 3/4
Oahu Sug. Co. 5 1/2	100 1/4	100 3/4
Olas Sug. Co. 4 1/2	100 1/4	100 3/4
Pac. Sug. Mill Co. 5%	100	100
Pioneer Mill Co. 5%	100	100
Wailua Agr. Co. 5 1/2	100	100

SALES—Between Boards: 10 Oahu \$32; 80 H. C. & S. Co. \$40.25; 10 H. C. & S. Co. \$40.25; 10 H. C. & S. Co. \$40.25; 100 Pala \$170; 5 Wailua \$118; 5 Wailua \$118; 10 Wailua \$118; 5 Ewa \$30.75.

Session Sales: 10 H. C. & S. Co. \$40.25; 50 Oahu \$32.12 1/2.

Latest sugar quotation: 4.9375c, or 98.75 per ton.

Sugar 4 9375 cts  
Beets, 16s 2 1-1d

## HENRY WATERHOUSE TRUST CO.

Members Honolulu Stock and Bond Exchange  
FORT AND MERCHANT STREETS  
Telephone 1208

## STOCKS AND BONDS

## Trent Trust Co., Limited

MEMBER HONOLULU STOCK AND BOND EXCHANGE

## Giffard & Roth

STOCK AND BOND BROKERS  
Members Honolulu Stock and Bond Exchange  
Stangenwald Bldg., 103 Merchant St.

## JAS. F. MORGAN, STOCK BROKER

Information Furnished and Loans Made  
857 KAAHUMANU STREET  
Phone 1879  
FOR ANYTHING IN

## IMPORTANT

Our sanitary wagons in our best advertisement. Our enamel-lined cold storage can be not excelled, and our distilled water and ice speak for themselves.

OAHU ICE & ELECTRIC CO. Telephone 1129

## REAL ESTATE

See OLIVER G. LANSING 80 Merchant Street

## LOCAL AND GENERAL

For a hack, ring up 2307. Boost the Floral Parade and help boost Honolulu.

It goes without saying that everything is best at The Finore.

The Heianai minstrels will repeat their performance tomorrow night. The biggest mosquito germ known is on exhibition at the Anchor Saloon.

Go and see Jos. Roman to have your hat cleaned. 122 Beretania St. The sugar planters visited the experiment station yesterday afternoon.

Just received—Portuguese onion seed from Madeira. Gonsalves & Co., Ltd.

The 1912 Calendar Pads have arrived and may be found at the Bulletin office.

Leave orders now for green Christmas trees. Henry May & Co., Ltd. Telephone 1271.

German, Portuguese and English Christmas cards at Beakbane, the engraver, Fort street.

We have a new line of novelty toys and favors for children's parties. Arts and Crafts Shop.

Tickets for the Jim Hono and Gilmore fight are on sale at the Territorial Messenger Service.

The Guardian Trust company has completed the enlargement of its offices in the Judd building.

If you want a good job done on an auto or carriage take it to Hawaiian Carriage Mfg. Co., 427 Queen St.

Green stamps are free! When you buy ask for them. New and beautiful goods to arrive per S. S. Lurline.

Notice tourists: Wanted 3 more for round-the-island trip by auto at Territorial Guide Service. Phone 1862.

They'll look like they were made for you, when you get them from Geo. A. Martin, tailor, Bethel street. \$20 and up.

A notice in today's papers states that W. D. Ellsworth has not been in the employ of P. M. Pond since October 23, 1911.

For distilled water, Hirs's Root Beer and all other popular drinks, ring up phone 2171. Consolidated Soda Works.

Avoid annoyance and disappointment by taking your Christmas packages to Wells, Fargo & Co.'s office early enough.

The regular meeting of the Hawaii Promotion Committee will be held at the rooms of the committee, today at 3:30 o'clock p. m.

There will be a regular business meeting of the Board of Agriculture and Forestry on Monday at 2 o'clock p. m. capitol building.

The Oahu Loan Fund commission will hold a meeting next week at which the Frog plane improvement plans are to come up.

Why not have your hats cleaned by The Expert Hatters, Fort street, opposite Club Stables. They give satisfaction. Try and be convinced.

WANTED—Two more passengers to make up motor party for a trip around the island, \$6.00 each. Lewis Stables and Garage. Tel 2141.

Everybody should visit Wall, Nichols Co., Ltd., and inspect their enormous stock of books, toys and holiday gifts. They are open every night until Xmas.

The Kaimuki, Wailaie and Palolo Improvement Club last night endorsed the free garbage collection system unanimously and decided to ask for more police protection and fire patrol boxes.

## GUILD LADIES TO HOLD SALE OF DOLLS

Since the basket fete there has been so much demand for St. Clement's dolls not sold on that day, that the ladies of the Guild have decided to hold a sale of dressed dolls on Friday, December 15th, at the Arts & Crafts Shop, Young building.

The dolls will be on view in the window all day Thursday, and the sale begins at 9 o'clock Friday morning.

## REAL ESTATE TRANSACTIONS.

Entered for Record December 7, 1911. From 10:30 a. m. to 4:30 p. m. Thomas B. Lyons by reg. Notice J. Alfred Magoon to Frederick C. Miller Par Ref Kam Sing and wf to Bishop Trust Co Ltd M E. L. Kinolea to Bishop Trust Co Ltd M Young Ming et al to Yee Yap. M Sarah Sharpe to Arthur Harrison P.A Sarah Sharp by atty to Frederick L. Wainwright Sub-P Otto A. Herbach and wf to Guardian Trust Co Ltd M Thomas T. Miles and wf to Annie Boyd D Annie Boyd to Lebia Miles. D

## BUY A LOT IN Kaimuki

BEAUTIFUL—HEALTHY. HEAD OFFICE—O'NEILL BLDG. 96 King St., cor. Fort - Tel. 3529

A Waterman Fountain Pen FOR CHRISTMAS SEE THE MANY STYLES AT Hawaiian News Co., Limited Alex. Young Building

## NEW - TO-DAY

IN THE "COURT" COURT OF THE First Judicial Circuit of the Territory of Hawaii—At Chambers, in Divorce, Hilda Easton, Libellant, vs. Walter E. Easton, Libellee. Libel for Divorce. Notice: To Walter E. Easton, libellee herein: You are hereby notified that the above-entitled cause, the same being for a divorce from you on the grounds of desertion and non-support, is now pending in the above-entitled Court and that the same will be heard and determined on Saturday, the 17th day of February, A. D. 1912, at the hour of 9 o'clock a. m. of said day, or as soon thereafter as counsel can be heard, at the courtroom of said Court in Honolulu, T. H. Dated, Honolulu, City and County of Honolulu, Territory of Hawaii, this 8th day of December, A. D. 1911. (Sgd.) M. T. SIMONSON, Clerk, Circuit Court, First Judicial Circuit, Territory of Hawaii. (Sgd.) C. K. Quinn, attorney for libellant. 5103—Dec. 8, 15, 22, 29; Jan. 5, 12

## NOTICE.

TO WHOM IT MAY CONCERN: W. D. Ellsworth is not now in my employ and has not been since October 23, 1911. P. M. POND. 5103-24

## FAMOUS BABY'S PARENTS TO COME

Mr. and Mrs. Edward M. McLean, parents of Vinson Walsh McLean, whose rating in society's Bradstreet's is "the \$100,000,000 baby," are now in San Francisco and are reported to be anticipating a visit to Honolulu, en route to Japan. Not having perfected his mastery of the Japanese idiom, the youngster, who is worth many times his weight in gold, will not accompany his parents, but will coo contentedly at his Washington home in the golden crib given him by the late Leopold of Belgium. Vinson McLean is 2 years of age, and, therefore, according to his nurse, he is having difficulties with the English language and has not been tempted to learn from his Japanese nurse, who, according to Washington dispatches, was teaching him Japanese. The baby was left at home by the parents during the present journey.

Edward B. McLean is son of John R. McLean, owner of the Cincinnati Enquirer, the Washington Post, a few lighting corporations, streetcar companies and tag ends of stocks and bonds appertaining to several leading enterprises of the country. Mrs. McLean was Miss Evelyn Walsh, daughter of the late John R. Walsh of Denver, multimillionaire mining man. A conservative estimate of the fortunes practically united by the marriage of the editor's son and mine's daughter is \$250,000,000. John R. Walsh's hundred millions gave to Vinson the sobriquet of the "\$100,000,000 baby." In addition to being manager of his father's newspaper properties, Edward B. McLean is active in financial and political circles at the national capital. The McLeans are the reputed purchasers of the Hope blue diamond, for which they are said to have contracted to pay \$300,000. Recently Carter of Paris and New York sued them for \$180,000 as the amount due for the gem. McLean refused to pay and endeavored to compel the jeweler to take back his unlucky brilliant.

INSURANCE COMPANY OF HAWAII, LIMITED HOME AUG 10 1911 50 YEARS HEAD OFFICE—O'NEILL BLDG. 96 King St., cor. Fort - Tel. 3529

Yee Chan & Co. Holiday Goods at Popular Prices Fancy Silks and Canton Linen. Embroidered Goods, Dress Patterns, Shirt Waist Patterns, Silk Shawls, Silk Scarfs, Canton Linen Table Covers and Doylies, Fancy Silk and Linen Handkerchiefs, Single or by the Box, Fancy Hand Bags, Ribbon Neckwear, Suspenders, Hosiery, Fancy Toilet Sets The above goods will make splendid Christmas presents. The Holidays are close and we ask that you come and select goods while the stock is complete. Yee Chan & Co. Corner King and Bethel

## WEEKLY BULLETIN \$1 a Year

A Grand Stock of Handkerchiefs Shaving Sets, Military Brushes, Smoking Sets, Traveling Sets Correct Ideas in Fashionable Hand - Bags Moire Bags, white, black and colored, \$2 to \$3.50 Satin Bags, black and colors, \$2.50 to \$4.50 Suede Bags black and colors, \$2.50, \$4.50, to \$7.50 Pin Seal Bags, black and colors, \$3.50 to \$12.50 Alligator Skin Bags, \$10.00, \$12.50, \$15 Tapestry Hand Bags, \$2, \$3, \$4, \$5 Silk Fringe Bags, \$2 to \$5 Silver Mesh Bags, \$1.50, \$2.50, \$5, \$7.50 to \$15 Children's Bags, \$1 to \$5—all sizes JORDAN'S Character Dolls New Neckwear