

JURY DUTY IS UP TO THESE

The following names have been drawn by the jury commissioners of the first court. From the names will be drawn the grand jurors as well as the trial jurors:

Trial Jurors.

James Auld Jr., Frank M. Bindt, Henry Cook, Percy G. H. Dyerhill, John Colburn, William A. Hall, Marah L. S. Hanman, Edward Johnson, Samuel K. Kaaha, Jasper A. Lawelawe, Fred M. Lewis, James B. Pakele, Charles K. Spencer, Walter Starbick.

George J. Brown, John Greene, John Hills, William E. Kerr, August V. Peters, John Pigott, Fred J. Turner, William F. Wilson.

Eugene K. Allen, Edgar S. Barry, Edward B. Friel, Ho Fon, Charles B. Huston, Thos. Nott, Geo. J. O'Neil, Edward K. Woodward.

Albert P. Afong, Frank H. Armstrong, Allen C. Robinson, Samuel A. Walker, Charles S. Weight.

Wm. McGowan, William Allen, Hermann Boehert, John K. Clarke, Benjamin H. Clarke, John G. C'ement, Eddie McCarrison, Henry A. Wise.

Chas. Corney, Charles H. Judd, Ernest Reinken, Chas. W. Bridges, Leslie C. Clark, George G. Kinney, Fred S. Lyman Jr., John Parker, David Rush.

Jonathan Alau, Manuel R. Coehlo, John G. Duarte, Horace Johnson, David K. Kauwala, Rued Kinney, Alexander McAngus, Arthur H. Perry, Harry H. Plemmer, Frederick J. Smith, Claude J. Wheeler.

John Enos, Carl A. Hundoop, William Lindsey, George Meyers.

James D. Davidson, David Douglas, Rudolf Muller, William A. Perry, Louis D. Warren.

Charles N. Arnold, Robert W. Atkinson, Sam B. Cummings, John E. Kahoa, David Makeana, George Pooloa, Charles Pooloa, Adfred G. Reis, Edward E. Robins, Ephriam C. Smith, Albert Waterhouse.

Eddie C. Bruns, Charles Johnson, Joseph K. Kana, George M. Raupp, Edward N. Voeller, Charles A. L. Wills.

Benjamin R. Campbell, Kim F. Chong, Harry A. Franson, Max Schlemmer, Ernest K. Kaai, Joseph Morse, Anton Schlimmer, Simeon K. Nawan, Thom D. Stroup, Edmund Swan, William E. Tirrell.

E. P. Rath, William E. Belling, Wm. R. Foster, James Guild, David Harvest, Bertram F. Hellbron, Thos. A. Thom Jr., Wm. C. King, David K. Martin, Wm. M. Minton, John E. O'Connor, D. Clarence Pringle, George Anderson, John Schleif, J. Chas. Schoening, Seely I. Shaw.

John S. Azevedo Jr., Spencer Bickerton, John A. Bortfeld, Thomas P. Cummins, Charles H. Eichler, James S. Fox, John C. Gall, Frank Godfrey, Simeon K. Hao Jr., Edward C. Holstein, Edward K. Hunt, Geo. H. Karratti, John A. Legros, Alexander K. Lewis, Albert Ludloff, Geo. W. Macy, Henry B. Mariner, Jas. K. Mersberg, Robert M. Namarra, John P. Padaken, James Punoahau, Henry P. Roth, Ranney Scott, William H. Smith, James Steiner, John Welsh.

Jos. K. Aea, Sr., Stephen J. Allen, Castro, Arthur C. Alexander, Jason Andrade, Henry A. Aech, Charles Bon, William H. Charlock, Alfred D. Cooper, Harold G. Dillingham, John Effinger, Chas. M. V. Forster, Chas. O. Hottel, Irving J. Hurd, John H. Jones, Joseph F. Lewis, Thomas McLean, Archibald S. P. Robertson, Ernest A. R. Ross, Benjamin Sammons, Jonathan Shaw, Samuel F. Nott, Oliver H. Walker, Walter C. Weedon.

David L. Austin, Franz Bechert, Eugene M. Campbell, James J. Crockett, Henry de Fries Jr., James D. Dougherty, James F. Fenwick, Adolph F. Gertz, Geo. A. Gonsalves, John Guild, Harold T. Hayselden, William H. Hoogs, Hiram Kolomoku, Carl A. G. Maertens, John W. Macdonald, Robert McCarrison, David A. McNamara, Robert W. Podmore, John G. Rothwell, St. C. Sayres, Chas. A. Simpson, John H. Soper, Charles A. Stobie, John S. Walker, John T. Warren, William J. West, Alfred E. Silva.

Geo. E. Bruns, John F. Colburn, Ed. Jas. R. Davis, Henry A. Giles, Charles F. Gilliland, Winslow Harnden, James P. Herrick, Hermann

Hugo, Fred H. Iaukea, Christian F. Jenkins, Geo. Johnson, William P. Johnson, Frank E. King, William D. McIntyre, Chas. Phillips, Ezra A. Rowland, John E. Schmidt, William Thompson, Eugene V. Todd, Richard Weedon, William E. Young, Norval B. Young.

Wm. L. Austin, Andrew E. Bright, Henry Kaai, Thomas L. McGuire, John Wallace.

Alfred Akana, Antone Fernandez, George N. Harbottle, Edward Drew, Mark R. Houghtalling, Samuel W. Spencer, Charles Wallace, Daniel Yowell, Sam Pupuhl.

Walter R. Coombs, Farm Cornu, Enoch Johnson Jr., Richard E. Lockwood, J. N. Wood.

Carl B. Andrews, John Apto, James Dodd, Edmund Styles, Thomas K. Ulukou.

James J. Arcia, Benjamin K. Asam, Abraham D. Bolster, William W. Buckle, James Kullke, William Y. Kwai Fong, Jacob Ordenstein, Fritz Meyer, John B. Mitchell, Alexander Smith Jr., Henry Davis, John H. de Fries.

Grand Jurors.
Emil A. Berndt, Geo. P. Castle, Amos Francis Cooke, C. W. Crandell, Charles Lucas, Harold K. Castle, Frank Hustace, Jas. W. L. McQuire, Percy M. Pond, A. Henry Afong, Bernard P. Beardmore, Frank E. Blake, Chas. Montague Cooke Jr., James Harris Mackenzie, Robert E. Mist, Fred Philip, Irwin Spalding, Frederick F. Steere, Bertram Von Damm, Harold B. Giffard, John A. Hughes, James E. Jaeger, Theodore F. Lansing, Jas. H. Love, Charles J. Ludkigen, Mannie Phillips, Albert H. Tarleton, Love M. Veleisen, Arthur F. Wall, John Waterhouse, Henry M. Whitney.

Chas. Crozier, Thos. J. Fitzpatrick, William M. Graham, Samuel J. Lyte, Edwin H. Paris, Frank E. Richardson, Gustav T. S. haefel, William C. Wilder, Archibald A. Young, James A. Auld, Edwin Benner, Elmer N. Cheatham, Chas. J. Falk, Arthur J. Spitzer, Winfred H. Bobbitt, Henry Cushman Carter, Olaf L. Sorenson, Gullford H. Whitney, John Hedr, Fred Waldren.

Isaac Adams, Mark A. Robinson, Christen Christofferson, Earl K. Ellsworth, James B. Carver, Ernest E. Lyman, William F. Bush, Clarence W. Gilvin, Albert W. Van Valkenburg, Donald MacIntyre, J. Morton Riggs, John H. Schnack, Chas. J. Hoke, Charles J. Campbell, Richard A. Cooke, Norman E. Gedge, Carl S. Holloway, E. W. Jordan, C. A. Mackintosh, John A. McCandless, Willie H. McInerney, James Wakefield, Harry E. Webster, Edward Swift.

REAL ESTATE TRANSACTIONS.

Entered for Record Nov. 26, 1910, from 9 a. m. to 10:30 a. m.
von Hamm-Young Co Ltd to W O Crowell Rel
von Hamm-Young Co Ltd to Geo W Mahikon Rel
Tam Pong by Comr to William Savidge Tr Comr's Sale
Tam Pong by Comr to William Savidge Tr Comr's Sale
Emma Silva and husb to William L. Welsh Exch D
William L. Welsh to Emma Silva Rel

Nov. 14, 1910.
George W Rowan and wf to Akamaku Ahaula (k); D: R P 7021, Ku 5530, Ap 2, Heela, Kooloupok. Oahu; \$1, etc. B 342, p 201, Oct 22, 1910.

Akamaku Ahaula (w) to Keleka H. Rowan (w); D: R P 1021, Kul 5530, Ap 2, Heela, Kooloupok. Oahu; 2 horses and personal property, \$1, etc. B 342, p 202, Oct 24, 1910.

I. G. Blae' man and wf to Frances T. Bieker; D: lot 2 and por lot 5, blk 166, Pa'olo Valley, Honolulu, Oahu; \$250 and m'g \$3750. B 342, p 197, Oct 31, 1910.

W K Kawahaseuni et al to Sing Chee & Co; D: nor R P's 3857, 3856 and 3803, Honolulu, Ewa, Oahu; 5 vrs at \$140 per yr. B 330, p 143, Nov 3, 1908.

Wong Buck Ching to John Makahio; D: lot in por R P 690, Kul 1242, rents, etc, Kapalama, Honolulu, Oahu; \$250. B 342, p 208, Feb 28, 1910.

William H. McInerney to John G. Duarte; D: lot 4 of Gr 3317, Sam'l Parker's subdiv of Boardman tract, Honolulu, Oahu; \$1325. B 337, p 283, Nov 12, 1910.

John G. Duarte and wf to William H. McInerney; M: lot 4 of Gr 3317, Sam'l Parker's subdiv of Boardman tract, Honolulu, Oahu; \$800. B 341, p 205, Nov 12, 1910.

Sing Hing Kee; Co-P D; tinware, crockery, glassware, hardware business, etc, 1181 Nuuanu St, Honolulu, Oahu; Capital \$2500. B 336, p 318, Nov 12, 1910.

A H Dandero to Oliver G. Lansing; P A; general powers. B 336, p 320, Oct 20, 1910.

A H Dandero et al by Atty to Leong Fook; Can L; please land, Auld's Lane, Honolulu, Oahu. B 330, p 445, Nov 2, 1910.

W McCandless to A H Dandero, et al; Par Rel; lot 14, Palama tract, Honolulu, Oahu; \$150. B 334, p 432, Nov 14, 1910.

W McCandless to A H Dandero et al; Par Rel; lot 33, Palama tract, Honolulu, Oahu; \$1. B 334, p 431, Nov 14, 1910.

Millie Morris to Lum Man Kay; D: lot B of R P 4475, Kul 7713, A J 38, Morris Lane, Honolulu, Oahu; \$550. B 342, p 209, Nov 12, 1910.

Millie Morris to W. Tin Yan; D: lot A of R P 4475, Kul 7713, Ap 28, Morris Lane, Honolulu, Oahu; \$550. B 342, p 210, Nov 12, 1910.

W Tin Yan to Trent Trust Co Ltd; M: lot A of R P 4475, Kul 7713, Ap 28, Morris Lane, Honolulu, Oahu; \$250. B 334, p 433, Nov 12, 1910.

John J. Grace to H B Nallimu; et al; Rel; R P Gr 907, Kihalani, N. Hilo, Hawaii; \$225. B 334, p 428, Oct 27, 1902.

John T. Baker to H B Nallimu; Rel; por R P Gr 907 and pe land, Kihalani, et., Hilo, Hawaii; \$665. B 334, p 429, Nov 3, 1910.

Walter A. Carpenter and wf to Marian Jose; D: 59' a of lot 8, rents, etc., Kaoho Homestead tract, Puna, Hawaii; \$1200. B 337, p 285, Mar 26, 1910.

S H Kahala and wf to Kukuiua Plantation Co Ltd; M: 18' a of Gr 1563, Kalaheo, Hanalei, Hawaii; \$300. B 334, p 429, Oct 24, 1910.

Haw'n Comd & Sugar Co et al to Territory of Hawaii; D: por G 3333, Main and Wares, Waiuku, Maui; \$1. B 342, p 202, Oct 14, 1910.

Moses Punoahau and wf et al to Manuel de Rego; D: R P 6421, Kul 7971, Waiohuli, Kula; Maui; \$175. B 337, p 288, Nov 14, 1910.

FROM THE JUNGLE.

Petrolign wild beasts direct from the work-shops of Germany's best Toy-makers. Dolls for the girls, Express Wagons, Horses and Carts, Mechanical Toys. Everything for the boy and girl. All new. A. B. Arleigh & Co., Ltd., Hotel near port.

When all the Indians die off some of those Western lawyers will have to hunt up a new profession.

Germany, the country that has inspired us with the marvelous music of Wagner, the exquisite poetry of Heine, the subtle art of Menzel; the country that has enriched us with the wonderful scientific discoveries of Humbolt and the splendid literature of Goethe and has contributed to the world's progress the masterly military ability of Von Moltke and the victorious statecraft of Bismarck is a standing testimonial to the

ENERGY-BUILDING QUALITIES OF GOOD BEER

Under the enervating conditions of our climate there is particular need for some force-giving tonic, and this tonic is found in perfection in



A Family Beer that should be in every home

Appreciation

TO THE PUBLIC—We wish at this time to express our appreciation to the Island public for the confidence reposed in us, as manifested by the large number of purchases of the motor cars we deal in. Altogether in the past we have handled some ten different makes of cars; we now handle only three.

There is a reason for this.

To handle any new make that was produced seemed to us too much like "trying it on the dog"—with the public as the dog.

Our policy was to study the situation carefully, gauge local conditions and then consult the best automobile authorities in America—with the result that we represent today

The Pierce Arrow Chalmers Hudson

(All Licensed Under Selden Patent)

These three great makes represent a combination of best practice in automobile construction, with the widest choice of body types and prices. The manufacturers of these three great makes are the leaders in the industry.

By handling only these three great makes we can do justice both to the public and the manufacturers.

There are from five to eight thousand different parts in an automobile—multiply this by ten, and the number is enormous. Few dealers if any could keep even the necessary parts of ten makes to provide against inevitable accident, but with three it is different.

We wish our name to be synonymous with the

GOOD AUTO SUNDRIES AND GOOD SERVICE.

Faithfully yours,

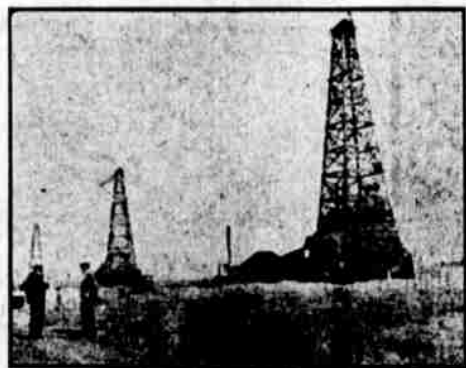
Associated Garage, Ltd.

Lake View No. 2 Oil Company

Home Office: 513 Merchants' Trust Building, Los Angeles, Cal.

These Two Wells Are Only 5,500 Feet Apart

Lake View No. 1 Lake View No. 2



Lake View No. 2 was down about 1200 ft. Nov. 1.

This is a picture of Chas. F. Off, the Oil Expert

Lake View No. 1 came in March 15 and does 65,000 Bbls. oil daily. The "Scientific American" says it is the most valuable oil well ever discovered, producing over one million dollars' worth of oil monthly.

SIXTY-FIVE THOUSAND BARRELS OIL IS EQUIVALENT TO 16,000 TONS COAL, AND WOULD REQUIRE TEN OF THE LARGEST SIZE LOCOMOTIVES AND 400 BOX CARS TO MOVE THE OUTPUT EVERY DAY.

I am taking subscriptions for stock in the above Company. This is a gamble in oil with fifty chances in your favor as against one to lose. This oil property is located in Kern County, Southern California, in the center of the world-famous Midway-Maricopa Oil Fields. It is about one and one-quarter miles from the world-famous oil gusher Lake View No. 1, and although two separate companies, practically the same officers and directors are connected with Lake View No. 2—it is a son of its father. The same manager, Mr. Chas. F. Off, who put down Lake View No. 1, is also manager of Lake View No. 2. We are six miles nearer the gusher than the Humama, recently exploited in Honolulu, six miles nearer than the Honolulu Consolidated, and three miles nearer than the Wm. Matson well. A 60,000 bbl. well came in one mile south of us for the Consolidated Midway Oil Company, three other big gushers within one mile east of us, and four within two miles north of us. We therefore feel our proposition is almost a certainty. Don't you think this is worth the gamble when you consider the immense profits from a good oil well? It is almost a fairy tale. If we strike a 10,000 bbl. well, at 65c per bbl., it is equal to \$3.00 daily per 100 shares, and this is only the profit from one well. We can put down forty more wells on our property. Lake View No. 1 has been doing 65,000 bbls. daily for over eight months; a 65c comes to over a million dollars profit every month; their stock cost 90c, now it takes all kinds of money to buy one share. Our stock is 50c per share today, and there is only a limited amount left, and when sold the price will be \$1.00 per share. When the well comes in about February the stock value will be according to the size of the well. This is why you can buy stock now at 50c, later it may be worth \$50.00. Lake View No. 2 well is down about 1200 feet with a 16-inch hole. The driller's log shows we are going through the same formations as Lake View No. 1, with every indication of striking a well equally as large.

Every man who engages in business takes a chance; the farmer's crop may fail, the ship may sink, even your life is a gamble. A gamble in Lake View No. 2 Oil Company would be \$50 to \$1 in your favor. Any man with intelligence takes a chance and develops into a globe trotter or tourist and lives on Easy Street; the other man who didn't is still a clerk at his old job. John D. Rockefeller might still be a clerk, but he took a gamble in oil—his salary is now about a million dollars daily. Every man and woman owe it to themselves to better their condition in life by buying some stock in this Company. Even a 100 shares might put you on Easy Street; it is a safe gamble. Do it now.

Mail me your check or P. O. order to cover one-third of the amount of stock you wish to order; The balance is payable in sixty days. Cut out your cigars or any other expense and buy some stock, and later on you can wear diamonds, and this is no idle boast.

Phone No. 3020, or drop postal for appointment.
J. OSWALD LUTTER, General Sales Agent, Honolulu.
1139 Fort Street, next to the
THIS IS YOUR OPPORTUNITY TO INVEST IN AN OIL COMPANY THAT WILL DELIVER THE GOODS.