

THE HERALD.

AGRICULTURAL.

HOUSEHOLD HINTS.

GRANDMOTHER'S GINGERBREAD.—Cup and a half of molasses, cup rich cream, teaspoon salaratus, tablespoon ginger mix.

Washing Flannels.—Send flannel before you make it up as it shrinks at the first washing.

CARE OF CANARIES.—Occasionally place in the water a small piece of the extract of licorice and put between the wires, at one end of the center perch, a piece of white sugar.

STORING EGGS.—An English Agricultural paper says that eggs intended for setting should be stored with the large end down, because the air bubble does not spread so much as when the small end is down.

COOKING RICE.—Put into the oven a pan with rice and the requisite quantity of water or milk, and keep it cooking till done—half an hour perhaps—then turn it, without stirring, into a dish for the table.

BOILED CHESTNUTS.—Peel off the shell of the chestnuts with a sharp knife, cover them with water and boil until the skin can be peeled off readily.

TO KEEP PLANTS OVER NIGHT WITHOUT FIRE.—I have kept many plants nicely all winter without any fire at night, in the following manner:

WEIGHTS AND MEASURES.—The figures given below have often been printed in detachments. We give them collectively, that housekeepers and farmers may have them in convenient shape for reference.

Table with 4 columns: Name of item, Weight/Measure, Name of item, Weight/Measure. Items include Wheat, Rye, Corn, Oats, Barley, Buckwheat, Clover seed, Timothy seed, Flax seed, Hemp seed, Bluegrass seed, Apples, Peaches, Corn salt, Fine salt, Potatoes, Beans, Castor beans, Onions, Corn meal, Mineral coal.

BOX MEASURES.

Farmers and market gardeners will find a series of box measures very useful, and they can readily be made by any one who understands the two-foot rule, and can handle the saw and the hammer.

A box 16 by 16 1/2 inches square, and 8 inches deep, will contain a bushel, or 2150.4 cubic inches, each inch in depth holding one gallon.

A box 24 by 11 1/2 inches square, and 8 inches deep, will also contain a bushel, or 2150.4 cubic inches, each inch in depth holding one gallon.

MEASURING LAND.—One acre contains 160 square rods, 4,840 square yards, 43,560 square feet. One rod contains 30 1/4 square yards, 272 1/2 square feet.

THE SIDE OF A SQUARE TO CONTAIN ONE ACRE.—One side 280.71 feet, 12.65 rods, 64 paces. Half acre 147.36 feet, 6.33 rods, 32 paces.

HOW TO ESTIMATE CROPS PER ACRE.—Erase together four light sticks, measuring exactly a foot square inside, and with this in hand walk into the field and select a spot of fair average yield.

Young Man, Stick to It.—There is a deal of regret expressed in speeches, letters to agricultural papers, and in editorials by kind-hearted, well-intentioned editors.

HOUSEHOLD KITCHEN FURNITURE For Sale.—I have the following articles for sale which I will sell low for cash, or on time for note bearing interest and well secured.

WM. H. WILLIAMS, Dealer in DRY GOODS, GROCERIES, Hardware, Queensware, Hats and Caps, Boots and Shoes.

THE CROW HOUSE, Opposite the Courthouse, VAUGHT & HUDSON, PROPRIETORS.

J. F. COLLINS, DEALER IN GROCERIES, COFFECTIONERIES, &c., &c. COUNTRY PRODUCE Bought at The Highest Market Price.

WM. F. GREGORY, (County Judge,) ATTORNEY AT LAW, HARTFORD, KY.

Prompt attention given to the collection of claims. Office in the courthouse.

FOGLE & SWEENEY, ATTORNEYS AT LAW, HARTFORD, KY.

JOHN C. TOWNSEND, (Formerly County Judge,) ATTORNEY AT LAW, HARTFORD, KY.

JOHN O'LAHERTY, ATTORNEY AT LAW, HARTFORD, KY.

JOHN P. BARRETT, ATTORNEY AT LAW, and Real Estate Agent, HARTFORD, KENTUCKY.

MORGAN & WEDDING, ATTORNEYS AT LAW, HARTFORD, KY.

HENRY D. MOSELEY, SAM. E. HILL, McHENRY & HILL, ATTORNEYS & COUNSELLORS AT LAW, HARTFORD, KY.

D. H. FRENCH, ATTORNEY AT LAW, AND REAL ESTATE AGENT, HARTFORD, KENTUCKY.

E. D. WALKER, H. C. HUBBARD, WALKER & HUBBARD, ATTORNEYS AT LAW, AND REAL ESTATE AGENTS, HARTFORD, KENTUCKY.

E. P. BARNETT, PRACTICAL SURVEYOR, HARTFORD, KY.

JOSEPH VAUGHT, BLACKSMITH, HARTFORD, KY.

Z. WAYNE GRIFFIN, Dealer in Drugs, Medicines and Chemicals, HARTFORD, KY.

L. J. LYON, Dealer in Groceries and Confectioneries, HARTFORD, KY.

ALONZO TAYLOR, Fashionable Barber and Hair Cutter, HARTFORD, KY.

Shop on Market street, two doors north of the Crow House.

HARTFORD ACADEMY. The second session of this school will commence on Monday, February 1, 1875.

Terms Per Session. Primary Department \$10 00. Junior 15 00. Senior 20 00.

The Hartford Seminary. The Fourth session of this school, under the control of J. E. Haynes, Principal, and Miss Emma Haynes, Assistant, will commence on Monday, February 22, 1875.

Plow Stocking AND GENERAL WOODWORK. The undersigned would respectfully announce to the citizens of Ohio county.

E. SMALL'S TRADE PALACE, HARTFORD, KY. Dealer in Staple and Fancy Dry Goods.

Ladies' Dress Goods, Sold at New York Prices. Bought at the highest market price.

JOHN P. TRACY & SON, UNDERTAKERS, HARTFORD, KY.

Manufacturers and dealers in all kinds of wooden coffin, from the finest rose wood casket to the cheapest paper coffin.

Wagons and Buggies, constantly on hand or made to order.

Geo. Klein, John M. Klein, GEO. KLEIN & BROS., HARTFORD, KY.

Arizona Cooking Stove, Seven sizes for either coal or wood.

TINWARE. All kinds of tinware made and repaired on short notice.

J. F. YAGER, Sale and Livery Stable, HARTFORD, KY.

I desire to inform the citizens of Hartford and vicinity that I have prepared to furnish Saddle and Harness Stock, Buggies and conveyances of all kinds.

WM. HARDWICK, A. V. NALL, HARDWICK & NALL, DEALERS IN DRY GOODS, GROCERIES, HATS, CAPS, BOOTS, SHOES, HARDWARE, QUEENSWARE, &c.

Which we will sell low for cash, or exchange for country produce, paying the highest market price.

L. F. WOERNER, BOOT & SHOEMAKER, HARTFORD, KENTUCKY.

Repairing neatly and promptly done. REPRESENTATIVE AND CHAMPION OF AMERICAN ART TASTE.

THE ALDINE, THE ART JOURNAL OF AMERICA, ISSUED MONTHLY. A MAGNIFICENT CONCEPTION WONDERFULLY CARRIED OUT.

The necessity of a popular medium for the representation of the productions of our great artists has always been recognized.

The Aldine is a unique and unapproached artistic journal. It is an elegant miscellany of the real value and beauty of the Aldine will be most appreciated after it is bound up at the close of the year.

The national feature of The Aldine must be taken in no narrow sense. True art is common to all nations.

Every subscriber for 1875 will receive a beautiful portfolio, in oil colors, of the same noble dog whose picture in a former issue attracted so much attention.

Man's Useful Friend. Will be welcome to every home. Everybody loves such a dog.

The Union were the originals of all the Aldine pictures, which with other paintings and engravings, are to be distributed among the members.

Specimen copies of The Aldine, 50 cents by subscription. There will be no reduced or club rates.

CANVASSERS WANTED. Any person wishing to act permanently as a local canvasser, will receive full and prompt information by applying to THE ALDINE COMPANY.

Unquestionably the best Sustained Work of the kind in the World.

HARPER'S MAGAZINE. Notice of the Press. The ever increasing circulation of this excellent monthly proves its continued adaptation to popular desire and needs.

Back numbers can be supplied at any time. A complete set of Harper's Magazine, now comprising 40 volumes, in neat cloth binding, will be sent by express, freight at expense of purchaser.

Address HARPER & BROTHERS, New York.

TO BE HAD DURING THE NEXT 30 DAYS, IN DRY GOODS, CLOTHING, BOOTS, SHOES, HATS, CAPS.

NOTIONS. We are determined to close out in order to make room for our Spring Stock.

THE SAINT LOUIS TIMES. Daily, Weekly and Tri-Weekly. THE LIVEST, CHEAPEST AND BEST DEMOCRATIC PAPER IN THE WEST.

The Largest Weekly Published in the United States. The Times Company take pleasure in announcing to the people of the Great West that they are now publishing the Largest, Cheapest and Best Democratic Paper in the country.

The Daily Times. Will be issued every day, except Sunday, in a folio form, containing thirty-two columns of the latest news—Foreign and Domestic.

The Sunday Times. Will be issued regularly as a Mammoth Double sheet, containing sixty-four columns of Literary and select Reading, and will be furnished to the Daily Subscribers without extra charge.

The Tri-Weekly Times. A four-page sheet, will be mailed to subscribers every Wednesday, Friday and Sunday mornings. This edition is designed to supply those who have not the mail facilities to obtain the daily issues, and yet desire a paper often than once a week.

The Weekly Times. "Mammoth Edition," containing sixty-four columns of the latest and most important news and carefully selected reading matter of all kinds.

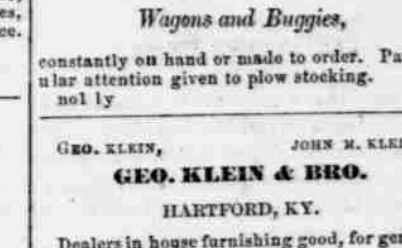
TERMS—POSTAGE PREPAID. Daily, 7 copies per week, single copy, 38 cts per year. In clubs of five or more \$7.50.

Ten per cent. Commission allowed on above rates to those who will act as agents. All money should be sent by Post Office Order, Draft, or Express to the address of THE TIMES COMPANY, St. Louis, Mo.

ALONZO TAYLOR, Fashionable Barber and Hair Cutter, HARTFORD, KY. Shop on Market street, two doors north of the Crow House.



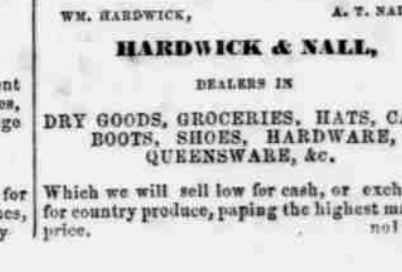
JOHN P. TRACY & SON, UNDERTAKERS, HARTFORD, KY.



J. F. YAGER, Sale and Livery Stable, HARTFORD, KY.



Man's Useful Friend. Will be welcome to every home. Everybody loves such a dog.



Man's Useful Friend. Will be welcome to every home. Everybody loves such a dog.