

The Lammert Furniture Co.

Announces a Special Sale, beginning MONDAY MORNING, April 11th, at

THE LAMMERT ANNEX

Of a most complete line of Morris Chairs, Fancy Rockers and Upholstered Furniture in leather and tapestry, and all suitable goods for the Parlor, Library, Bedroom and Dining Room, at an exceptionally low price.

It will more than pay you to inspect these Special Bargains.

THE LAMMERT FURNITURE CO.,
FOURTH AND ST. CHARLES STREETS.

HOTEL RATES WILL NOT BE ADVANCED DURING THE FAIR

Proprietors State That Prices Will Remain Reasonable After the Exposition Opens, Though Guests Will Be Expected to Double Up in Rooms—Accommodations Provided for More Than 100,000 Visitors Daily—Boarding Houses and Private Homes Increase the Capacity for Entertaining Hosts of Sightseers.

FIGURES ARE BELOW THE MARK SET BY OTHER LARGE CITIES.

"How shall we furnish the best accommodations at the most reasonable rate to the millions of visitors who will come to St. Louis during the next six or seven months?"

This question has agitated the minds of St. Louis hotel managers for some time. Talk to anyone acquainted with the hotel business, from the president of the company to the bellboy, and you will be told that caring for the World's Fair crowds is a herculean task.

Fully alive to the proportions of the problem, hotel men of the city have for months been active in seeking a solution. Perhaps a few weeks' experience will be necessary to show hotelkeepers how to best carry out plans which they have already outlined. However, interviews with any of the heads of leading establishments will lead one to believe that the vast throng of transients who come to the Exposition will be cared for in a way to reflect credit on the city.

Almost all of the hotel companies have contributed liberally to World's Fair subscriptions. Individually and collectively, the managers of the several hotels are personally interested in the success of the Exposition.

RATES NOT RAISED: MORE GUESTS IN ROOMS.
According to precedents in times when the hotel accommodations of any city are to be taxed to an unusual degree, the question of raising the rates immediately arises. In many instances, where conventions and expositions are to be held in

cities, the rates at hotels have soared skyward.

Hotel rates will not advance in St. Louis during the Exposition, as far as the individual is concerned. Owing to the great demand for accommodations and the increase in number and wages of employees, hotel managers will have to adopt some plan whereby they may protect their own increased expenses and at the same time protect the visitor.

As a solution of this question, hotel managers, almost without exception, have decided to increase the capacity of the rooms, although the rate per person obtained at present will prevail during the Fair.

In case of extraordinary crowds, two, three and perhaps four persons will be asked to occupy the same room. Each guest will pay for accommodation at the rate charged previous to the opening of the Exposition.

In case one person wishes to occupy the room alone a rate equal to the total amount which the room could earn will be charged. This will prevent a few from enjoying accommodations, while many are deprived.

According to statements made by hotel men and persons accustomed to traveling, such an arrangement is quite natural. As a rule, Exposition visitors usually come in parties of three or four. They will want to be together most of the time, any way, and if they are asked to sleep in the same room, it is thought that they cannot find ground for protest.

Guests who stop at the leading downtown hotels will be able to do so as cheaply as they could had they come to St. Louis a year ago. Even if they consider it an inconvenience to sleep in a room with other guests such an annoyance cannot be prevented unless they are willing to pay for depriving others of accommodations.

Managers of the leading downtown hotels have discussed the question thoroughly. The rule of maintaining present rates with an increase in the capacity of the rooms will be generally enforced. This rule will be ironclad. That is, no one will be able to secure favors which cannot be granted universally.

The number of guests which shall fill a room will depend on the size of the room. A room which ordinarily is assigned to one person can hold two and probably three. A room which ordinarily accommodates two guests will shelter four if the occasion demands.

In downtown hotels cafe prices will not advance materially. The action of managers will depend on the prices of provisions, vegetables and fruits. The expected increase in wages of employees must also be taken into consideration. In the main hotelkeepers declare that they will not be justified in raising cafe prices as long as present conditions continue.

Manager Henry Weaver of the Planters Hotel says that after May 1 he will expect guests to be willing to "double-up" in rooms, but that each guest will only be expected to pay according to the rate that prevails now.

VIEW OF BIG HOTEL MANAGERS.
"World's Fair visitors are coming in great numbers," said Mr. Weaver, "and they must be accommodated. It is only fair that the hotels take care of them in the best possible manner."

"If a room earns \$1 a day now for one guest and three guests can occupy it each guest will be charged \$1. Of course, the room will then earn \$3. Should one person desire to occupy the room alone the full earning capacity, or in other words, \$3, will be charged. Weekly or monthly rates will not be made to anyone."

Manager Lewis of the Southern, said: "If two guests are friends they cannot object if we ask them to occupy the same room at a time when hundreds are clamoring for accommodation. It is the logical thing to do. The present rate per guest will continue."

"Caring for the visitors who come to St. Louis this summer is a difficult proposition, and they cannot expect the same advantages which they find during the dull season of the year. Two or three guests must occupy the same room."

T. E. Higgins of the Madison Hotel said: "We are going to do almost all other hotels keepers in St. Louis are doing. We are increasing the capacity of our rooms and letting prices per guest remain at the old figure."

A representative of the Lindell Hotel management said: "The Lindell's guests are mostly commercial travelers, and they want sample-rooms in which to show their goods. Increasing the capacity of a room would not be satisfactory to such guests. Consequently, we will have to increase our rates when the Exposition opens."

Manager of the New St. James said: "It is our intention to care for as many people as we can as long as we are able to do so satisfactorily. Of course, two or three guests will sleep in one room, but the price per guest will not be increased."

Manager Lyman T. Hay of the Hotel Jefferson, which opened Thursday evening, said: "I will be glad to have the Exposition our prices will be similar to those of other hotels of our class. We have not yet decided what will be done after the Fair opens, but our prices will be reasonable, all things considered."

"Our rates will be \$2 and up, as they have always been," said Manager H. C. Beatty of the St. Nicholas. "We will not make an advance in price. The number of guests will have to 'double-up' in the rooms. There will be an extraordinary many time for hotels and other places. Our guests must occupy the same room in order that all World's Fair visitors may be accommodated. Our cafe prices will not be raised."

REASONABLE RATES AT FAIR HOTELS.
At present there are about 175 permanent and temporary hotels in St. Louis, and it is expected that before the opening of the Exposition the list will be increased to 250. It is estimated that these hotels will be able to accommodate 50,000 persons daily without undue crowding, and perhaps many more with crowding.

Besides the hotels, there are thousands of rooming and boarding houses scattered all over the city, and it is estimated, according to figures compiled by the Free Information Service of the World's Fair, that at least 100,000 persons can be comfortably cared for daily in the rooming and boarding houses and in private homes. Many more persons can be accommodated by "double-upping."

PRICES LOWER THAN IN OTHER LARGE CITIES.
Besides making agreements with managers for reasonable rates for the Exposition period, the World's Fair has established a hotel inside the grounds. This is the Inside Inn, which is located in the southeastern corner near the State building's entrance.

The hotel has 2,500 rooms and a capacity of 5,000 persons daily. The rates are fixed and controlled by the Exposition Company and will be maintained from the opening until the closing of the World's Fair.

It is said that the terms are lower than those charged in other large cities for the same accommodations. The European plan is \$1.50, the American plan \$1.00, and the single meal \$1.00. There are also rates for single meals, 50 cents is charged for breakfast, 25 cents for lunch and 15 cents for evening dinner. There also is an a la carte service at moderate prices.

These rates include admission to the World's Fair grounds, which is paid daily by the hotel to the Exposition company for all its guests after their arrival. Each guest pays his own way into the grounds in going to the hotel, after arriving in the city.

In the immediate neighborhood of the grounds there are almost a score of temporary hotels, with a capacity of from 50 to 500 persons daily. With rates ranging from 50 cents a day up, on the European plan and \$1 up on the American plan. Besides these hotels, there are many other places which somewhat farther removed from the Exposition grounds, where visitors can secure accommodations. The rates are fixed by the limit to be determined by the individual's means. There are several tent hotels, which entitle the guest to a room for \$10.00 per person, at prices from \$2 up to \$10 a week.

TENT OF AN DAY TO BE B. A. DAY.
Among the larger temporary structures is the Christian Endeavor Hotel and Auditorium, situated just outside the grounds, on the south, and reached by the Market, Chouteau and Laclede lines. It is 400 feet in dimensions, three stories high and has a capacity of 3,000, while the dining-room will seat 1,500. The rates are based on a rather novel plan and are \$1 a day on the European plan and \$2 a day on the American plan.

Charter certificates, entitling the holders to a reduced rate of a day rate of \$1.00, \$1.50 and \$2.00 for lodging only; \$2 a day including room and board. The management reserves the right to place two or more persons in a room, when necessary, and if the guest wishes to avoid this he can secure a room to himself by paying \$2 a day.

The \$1-a-day rate is made only to those holding the charter certificates, which will be honored any time during the Exposition, for as many consecutive days as the visitor desires to remain at the hotel. No rates for transient guests are established, but the management reserves the right to charge current prices and to increase the rates whenever it sees fit to do so.

John L. Brandt, secretary of the company, says that the company has already booked 200,000 lodgings, and expects to increase the number to 600,000 before the World's Fair closes.

The EdwORTH Hotel is conducted on much the same plan as the permanent structure, located at Melville avenue and Rosedale place. It will cater especially to "Christian people," and there will be neither bar nor liquor. It has a capacity of about 3,000, and sells certificates for \$2, which entitle the holder to a room for lodging, based on the assignment of two guests to one room. Meals are served at the prices said to be very reasonable.

The holder may avail himself of the \$1 rate as long as he desires, but he must notify the management thirty days in advance of his coming. On the receipt of this notice and on the day of his coming, the management will set aside a room and the certificate holder will be notified of the number and location of his room, which will be held for his use during the time designated. Transient guests, or those who are not certificate holders, cannot expect to secure the \$1 rate, and must pay \$2 a day for lodging, meals extra. The management reserves the right to advance the rate, but will fill all outstanding contracts.

The Publishers' Hotel, which is being built north of the Fair grounds, in University Heights, is now under construction. It is a new building, recently planned, will accommodate 1,500 guests. The published rates are: European plan, \$1 a day; American plan, \$1.50 a day; two meals a day, \$2. The rooms will contain two double beds and a rate of \$4 a day will be charged.

The grounds about the hotel will be filled with tents, furnished with board seats, electric lights, lockers and two cots, and can be had at \$2 a day.

Then there is what is called the Cottage Hotel, on Clayton avenue, between Skinker road and Pennsylvania avenue. It will have 100 cottages, with accommodations for 400 persons in each; a central pavilion with cafe, barber shop, toilet rooms, smoking-rooms, long-distance and local telephone and automobile service. Lodging will cost \$1 a day, meals a la carte.

A tent city will be established by the Oklahoma World's Fair Association of Lawton, Ok., in the Willow Grove in Westlawn, just west of the Exposition grounds. Hundreds of waterproof tents, furnished for lodging, will be pitched, and may be rented at from \$4 to \$10 a week.

For those who wish to pay more there are a score of good, permanent hotels within fifteen minutes' ride of the World's Fair grounds. The published rates are: European plan, \$1 a day; American plan, \$1.50 a day; two meals a day, \$2. The rooms will contain two double beds and a rate of \$4 a day will be charged.

The grounds about the hotel will be filled with tents, furnished with board seats, electric lights, lockers and two cots, and can be had at \$2 a day.

Then there is what is called the Cottage Hotel, on Clayton avenue, between Skinker road and Pennsylvania avenue. It will have 100 cottages, with accommodations for 400 persons in each; a central pavilion with cafe, barber shop, toilet rooms, smoking-rooms, long-distance and local telephone and automobile service. Lodging will cost \$1 a day, meals a la carte.

A tent city will be established by the Oklahoma World's Fair Association of Lawton, Ok., in the Willow Grove in Westlawn, just west of the Exposition grounds. Hundreds of waterproof tents, furnished for lodging, will be pitched, and may be rented at from \$4 to \$10 a week.

For those who wish to pay more there are a score of good, permanent hotels within fifteen minutes' ride of the World's Fair grounds. The published rates are: European plan, \$1 a day; American plan, \$1.50 a day; two meals a day, \$2. The rooms will contain two double beds and a rate of \$4 a day will be charged.

The grounds about the hotel will be filled with tents, furnished with board seats, electric lights, lockers and two cots, and can be had at \$2 a day.

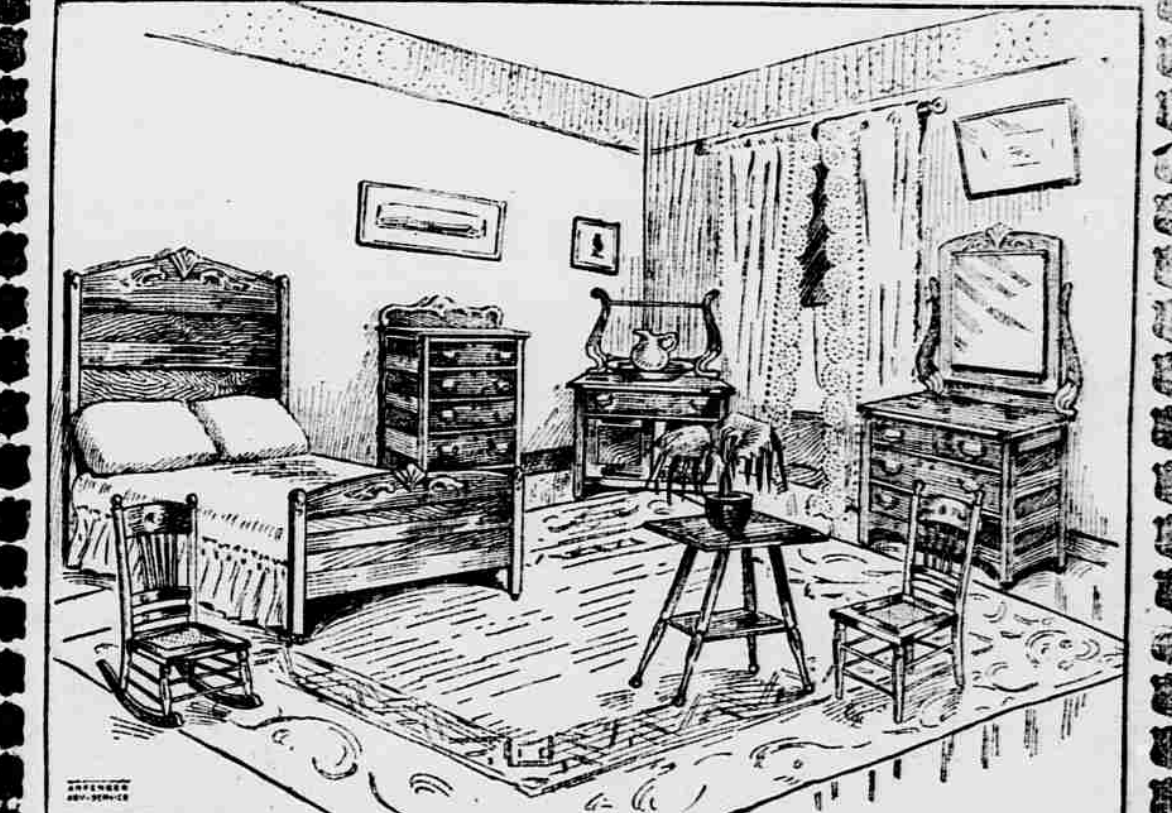


Better come to The Union and pick out your furniture and carpets NOW, while shopping is a pleasure and deliveries are prompt. A week or two from now—well—what's the use of waiting till the last minute when everybody will want their goods at the same time? We're ready NOW.

COMPLETE BEDROOM OUTFIT

Just as Shown in the Picture. **\$3.00 CASH** BALANCE \$1.00 A WEEK.

THIS IS THE UNION'S WORLD'S FAIR OFFER THAT HAS CREATED A GREATER SENSATION THAN ANY OFFER THAT HAS BEEN MADE IN RECENT YEARS.



Here's an Honest Picture of This Complete Bedroom Outfit.

The picture was drawn direct from the goods. It shows this great Bedroom Outfit just as it is! \$60 worth of furniture, curtains and carpets for \$39.75—an easy terms of \$3.00 cash and balance \$1.00 a week. Every piece is solid oak in rich golden finish! Bed, spring and mattress—dressed with large glass—washstand with splasher back—chair, rocking chair, center table, window shade, pair of lace curtains and room-size 8x12 foot rug. The greatest value ever offered by any store in America for \$39.75.

\$3.00 CASH AND BALANCE \$1.00 A WEEK.



Pay Us \$2 Cash and 50c a Week

For this Handsome Bed-Davenport—Exactly Like Cut. The last lot went in one day—that shows what the people think about them. They're great, big, handsome Davenport, heavy frames, in golden oak finish—6 feet 4 inches long—upholstered in green velour and deeply tufted on beds of best steel supported springs. They open up into a large, comfortable double-size bed 4 ft. 4 in. wide. Worth \$38.00. The Union's Special Price. **\$24.50**

\$2.00 CASH **50c A WEEK**

CASH OR CREDIT
UNION HOUSE FURNISHING CO.
FRANKLIN AVE. AND 8TH ST. S.E. CORNER
NOT IN THE HIGH-PRICED "CLIQUE."

BEAUTIFUL WOMEN CURED BY TO-NI-TA

AFTER DOCTORS AND MEDICINE FAILED TO BRING RELIEF. Secret of Radiant Health and Good Looks Discovered in Dr. Lorentz's Wonderful Membrane Bitters.

MARVELOUS HEALING POWERS OF TO-NI-TA ACT LIKE MAGIC IN CURE OF OBSTINATE, DEEP-SEATED CATARRH. AND IN BUILDING UP RUN-DOWN, NERVOUS, OVERWORKED AND SICK MEN AND WOMEN.

The great number of cures effected by TO-NI-TA, DR. LORENTZ'S famous MEMBRANE BITTERS, proclaims it the most precious medicine and boon to the afflicted ever discovered. TO-NI-TA is a scientific combination of the most powerful healing herbs known to medicine. It exerts a marvellous and immediate influence in the subjection and cure of the most obstinate cases of catarrh of the head, throat, lungs, stomach, bowels, kidneys and bladder, and female diseases in all forms.

The first symptoms of catarrh in the head or throat should be carefully noted. This is the danger warning of pneumonia, consumption, neuritis, fevers, stomach and bowel troubles and of a breakdown of the health and calls for the immediate use of TO-NI-TA.



Miss Marshall Had Quinsy Sore Throat Every Winter For Years, Until Cured by TO-NI-TA.

"I want to say a word about TO-NI-TA and what it did for my daughter. She had been troubled with quinsy sore throat every winter for a number of years, and nothing did her any good. So, this winter, when her throat began to get sore, I thought she was going to suffer with it again. I saw an advertisement in the Norwich Record about TO-NI-TA, and how good it was. So I got her a sample bottle. It made her so much better that I bought a large bottle, and it cured her. It is the most wonderful cure in the world for sore throat. F. N. Marshall, 363 N. Main St., Norwich, Conn.

"Suffered Torments From Insomnia, Indigestion and General Weakness. TO-NI-TA Restored Me to Perfect Health."—Nellie Grant.

"For some time I suffered with insomnia, nervousness, deranged digestion and general weakness. I was unable to eat, and was constantly getting worse. I lost many a day's work, as I was too sick to attend to it. "After medical skill failed, I was advised to use TO-NI-TA, and am happy to report that after using your precious medicine for two weeks my insomnia was banished, and I rapidly began to regain health and strength. I am now in full enjoyment of robust, vigorous health, never felt better in my life. I am so grateful to TO-NI-TA. Miss Nellie Grant, 1 Williams St., Haverhill, Mass.

FROM BRINK OF THE GRAVE. Miss Hazel Noonan, Victim for Years of Catarrh of Head and Stomach, Cured by TO-NI-TA.

"TO-NI-TA is the most wonderful medicine for Catarrh in the world. For several years I suffered terribly from catarrh of the head, and tried everything the doctors prescribed, but instead of getting better I grew so bad that the disease spread to my bronchial tubes and stomach, and my health was entirely undermined. A friend advised me to take TO-NI-TA. The first few doses produced a decided improvement, and within a month I was completely cured. My sleep and appetite have been restored, and I can eat anything and enjoy it. Hazel Noonan, Lynn, Mass.

Every TO-NI-TA testimonial is genuine and the original letters may be seen at any time at our office. We have thousands of them. Write fully and in confidence, as no letters are published without the writer's consent, and all letters will be returned to you if preferred.

TO-NI-TA contains no cocaine or other dangerous drug or pernicious stimulant so generally found in so-called catarrh and asthma remedies, which do the sufferer more harm than good.

It matters not how run-down, nervous, thin, weak and sick you may be, TO-NI-TA will build you up and make you strong and healthy again. A few doses will convince you of the wonderful healing and invigorating powers of this great medicine. At all druggists or direct, \$1 a bottle.

BEWARE OF SUBSTITUTES.

Our attention has been called to a few cases where unreliable dealers have tried to sell some cheap, injurious substitute for "just as good as" TO-NI-TA. Ask for TO-NI-TA and insist on the genuine Dr. Lorentz's "Beautiful Story of TO-NI-TA" and doctors' advice free to everyone who writes LORENTZ MEDICAL CO., Flatiron Building, New York.

"The Bargain Hunters"

Forty dollars given away. See large Ad, Page 5, Part II, to-day, and look out for the Bargain Advertisement of the Wm. Barr Dry Goods Co. in The Republic next Wednesday morning.

IT IS A CERTAINTY

that you can beat the horses if you play my information and follow my instructions. Let me convince you. Winner of the Carter Handicap at Aqueduct. Price \$100 for this information. No commissions handled. **DAY & BEAMAN,** 1204 Broadway, New York.

"THE BARGAIN HUNTERS"

FORTY DOLLARS GIVEN AWAY. See large Ad, Page 5, Part 2, to-day, and look out for the Bargain Advertisement of THE Wm. Barr Dry Goods Co., in The Republic next Wednesday morning.

Every Woman

in household should know about the wonderful **MARVEL Whirling Spray** The New Toilet Hygiene. It is the most perfect toilet preparation ever made. It is sold in all drug stores. Price 25c per bottle. For sale by Johnson Bros., Broadway and Franklin, Wolf, Wilson Drug Co., 5th and Washington.

CHICHESTER'S ENGLISH PENNYROYAL PILLS

SAFE, ALTERS THE BLOOD, AND IS THE ONLY REMEDY FOR ALL BLOOD AFFECTIONS. It is sold in all drug stores. Price 25c per bottle. For sale by Johnson Bros., Broadway and Franklin, Wolf, Wilson Drug Co., 5th and Washington.