

Goodyear Wing Tire

You Ought to Put Rubber Tires on Your Carriage

Think how comfortable a rubber tired carriage is! Think how much longer your carriage will last when equipped with easy-riding rubber tires! And how greatly rubber tires will improve the appearance of your carriage and your driving team!

Rubber tires don't cost much. And good ones last a long time. Why not put rubber tires on your carriage?

GOOD YEAR "Wing" Carriage Tires

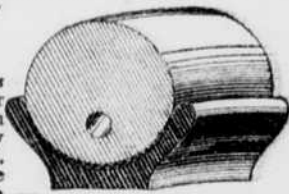
People everywhere are putting Goodyear "Wing" Tires on their carriages.

More Goodyear "Wing" Tires are sold every season than any other kind of rubber tires, because they wear longest. The secret of their amazing endurance lies in the fresh, lively rubber of which they are made, and in the "wing" feature.

Note the "wing"—how it presses against the sides of the channel and completely fills it. It keeps out all water, mud, dust, dirt and gravel, which otherwise would work into the channel and cut out the tire base.

Goodyear "Wing" Tires will fit your carriage. Any dealer can easily put them on. The whole job costs but very little. And once you've tried them you'll wonder how you ever put up with commonplace, hard-riding steel tires.

Our "Eccentric" Cushion Tire



For light runabouts we recommend our "Eccentric" Cushion Tire, a remarkably easy-riding tire; and, because the wire hole is below the center, it insures a greater wearing depth. This tire gives 50 per cent more service than any other cushion tire.

The Goodyear "Eccentric"

Postal Brings Book

Goodyear "Wing" or "Eccentric" Cushion Tires can be had at most carriage dealers.

Send postal today for Book on BUZZY TIRES and name of nearest Goodyear dealer. (527)

The Goodyear Tire & Rubber Company
Akron, Ohio
Largest Makers of Rubber Tires in the World.



YES, YOU SHOULD

Whether or not you are planning to put in any Cement—tanks, silos, feeding floors—you should inform yourself fully in regard to the advantages of using Cement in your future building operations.

We have an illustrated booklet of 112 pages treating over 100 subjects with working plans which give the exact proportions of cement and other materials required, all devoted to the use of

CONCRETE IN THE COUNTRY which we will be glad to send you without cost.

A postal card will bring it, but we will greatly appreciate a letter from you stating the work you are planning. This will enable us to give you the benefit of our experience and that of our customers who have done this same kind of work. Write today.

Dixie Portland Cement Co.,
1011 James Bldg., Chattanooga, Tenn.

FOUR TOOLS IN ONE

A Drill Seeder, a Hill Seeder, a Double Wheel Hoe and a Single Wheel Hoe are all combined in Iron Age, our No. 6. It drills accurately any thickness desired. Shut-off on handle, brush agitator in hopper. Changeable instantly from Drill to Hill Seeder or reverse. Drops 4 to 24 inches, as desired. Changed to Wheel Hoe in three minutes. Is but one of complete line that fits the needs and purse of every gardener. Can be purchased in simplest form and added to as different attachments are needed. It does perfectly all work after breaking up of garden. You should see this tool. Ask your dealer to show it. Write us for special booklets.



Complete line of farm, garden and orchard tools.
BATEMAN M'FG CO.
B. 1892, GRENLOCH, N. J.

THE PROGRESSIVE FARMER

Each Advertiser's Reliability Guaranteed.

WE will positively make good the loss sustained by any subscriber as a result of fraudulent misrepresentations made in The Progressive Farmer on the part of any advertiser who proves to be a deliberate swindler. This does not mean that we will try to adjust trifling disputes between reliable business houses and their patrons, but in any case of actually fraudulent dealing, we will make good to the subscriber as we have just indicated. The conditions of this guarantee are, that the claim for loss shall be reported to us within one month after the advertisement appears in our paper and after the transaction complained of, that our liability shall not exceed \$1,000 on any one advertiser, and that the subscriber must say when writing each advertiser: "I am writing you as an advertiser in The Progressive Farmer which guarantees the reliability of all advertising it carries."

Average Weekly Circulation **144,280**
Six Months Ending Jan. 1, 1912,

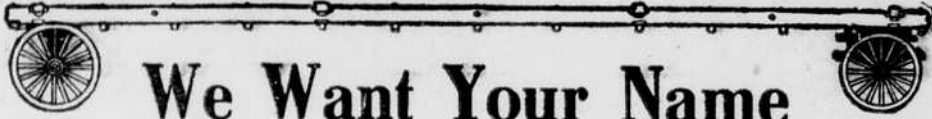
SUBSCRIPTION RATES:

One year, \$1.00; six months, 55 cents; three months, 30 cents.
To induce new subscribers, one new subscriber and one old subscriber may both get the paper one year for \$1.50.

10 Weeks Trial, 10 Cents.

To new subscribers only, The Progressive Farmer will be sent ten weeks on trial for ten cents. Sample copy free. Tell your friends who need it but do not read it.

PIEDMONT WAGONS HICKORY



YOUR name and address will bring you a catalog of wagons in which paint does not hide such imperfections as kiln dried wood.

The timber in Piedmont and Hickory Wagons is air seasoned for years. Spokes for our 1917 wagons are now seasoning in their sheds. Buy a Piedmont or Hickory Wagon.

If you think you don't need one it's because you do not know that they are hand ironed with first quality wrought steel and that

We Guarantee Every Wheel

To stand up, to keep its dish and to track right under heavy haulings in all seasons.

If you know a farmer or teamster with a Piedmont or Hickory Wagon ask him what he thinks of this wagon that we want to tell you more about.

Write—Now!—for catalog and name of dealer nearest you. Then see the wagon.

PIEDMONT WAGON & MANUFACTURING CO., Hickory, N. C.

Better Farm Implements and How to Use Them

JOHN DEERE PLOW CO.

You Should Have This New John Deere Book

Illustrates and describes the most complete line of farm implements. Tells how to adjust and use them under varying conditions. It is a practical encyclopedia for the farm. It is worth dollars to you.

Mailed Free to Farmers

If you have not already received your copy of this new book, be sure to ask us for it now.

Get Quality and Service
An Deere Dealers Give Both

Davenport Roller Bearing Steel Wagons

Buy Your Wagon Once For All

There is a wagon made that is stronger, more durable and of lighter draft than any other. This wagon is

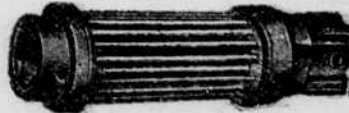
Built Like a Bridge

Entirely of steel I-Beams, Channels and Angles, solidly held together with large steel rivets, put in hot under great pressure. Like the steel railway bridge, it is constructed for hardest lifetime service. Strong and durable.

Each front gear and each rear gear is practically one solid piece that cannot come loose or apart.

Steel Wheels

This wagon has steel wheels that are trussed and made with a tension,



The Roller Bearing

Be sure to tell us whether you want your copy of "Better Farm Implements and How to Use Them" and in order to get the "Wagon Book" containing full information regarding the above described wagon, ask for Package No. B 2

JOHN DEERE PLOW COMPANY, MOLINE, ILLINOIS

the strongest known wheel construction. Every spoke is staggered and forged hot into the tire. Regardless as to whether the spoke is at the top, side or bottom of the wheel, it always carries its share of the load.

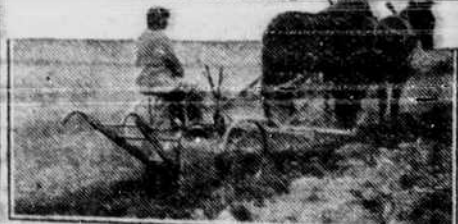
Roller Bearings

That roller bearings reduce draft is generally conceded. Of the various styles, the straight roller bearing is the simplest and most successful.

For this wagon the straight roller bearing is especially adapted. The spindles and hubs are straight. Consequently, as this wagon is equipped with straight roller bearings it is of light draft.

A little book we'll be pleased to send free, tells of a good many more superior features this wagon has.

SAVE HARD WORK



MAKE A SULKY PLOW OF YOUR WALKING PLOW

Attach a Western plow sulky to your regular walking plow and ride. Fits right or left wood or steel beam plow. Levers give perfect control in any soil. 10 days free trial. Fully guaranteed, sensational price. Write today for particulars.

Western Implement Co., 800 Park St., Ft. Washington, Wis.

SAMSON WINDMILLS



Different than all others and better because of the double gears, big oil boxes, drop-forged wrist pin, removable bearings, center lift. No side strain, no noise. Big, heavy and powerful. 4, 6, 8, 10, 12, 14, 16, 18, 20 ft. diameters. Send for catalog. Also feed mills, pump jacks and gasoline engines.

STOVER MANUFACTURING CO.
234 Samson Ave., Freeport, Ill.

BUCKEYE GRAIN DRILLS

Have a Double Run Force Grain Feed—sows any kind of oats, wheat, rye, rice, barley, peas, beans of all kinds and sizes, beets, etc.

The Buckeye Non-corrosive Glass Cone Fertilizer Feed successfully sows in wide range of quantity all brands of standard commercial fertilizers, having an agitator that always keeps the fertilizer moving; a fertilizer hopper lined with galvanized metal.

The Buckeye Frame is made of square tubular steel; will not warp or sag.

The Buckeye Nested Cone Gear Grain Drive. No lost motion. Positive drive. Change of quantity instantly made.

Buckeye Furrow Openers—Any style wanted. Single Disc, open or closed delivery; Double Disc, Hoe or Shoe.

Sizes—Any size from one-horse up.

Buckeye Drills are simple in construction, very light draft, and plant the seed at an even depth.

Send for the Buckeye Catalogue and then go to your local dealer and insist on seeing the Buckeye Drill.

"The Buckeye—A Wise Buy."

THE AMERICAN SEEDING MACHINE CO.
SPRINGFIELD, OHIO, U.S.A.

Great \$4 Offer on a Set of Empire Steel Wheels



On receipt of \$4 we ship anywhere in United States four Empire Steel Wheels to fit your wagon, for 30 days' hauling test. They will save 25% of the draft, save your back and please you in every way. If not exactly as represented, return them at our expense and back comes your \$4 without delay. Otherwise, pay balance and wheels are yours for a lifetime. Perfect Measuring Device free, for measuring your wagon skids.

1912 Model Empire Farmer's Handy Wagon

Ask for Great Introductory Offer on world's best Handy Wagon. Choose from 20 styles for every purpose. Wagons have enormous carrying capacity—save 25 per cent of draft and half the labor of loading and unloading.

BOOK FREE—WRITE TODAY



EMPIRE MFG. CO.
Box 841, Quincy, Ill.

FREE Murray 1912 Catalog NOW READY

Don't think of buying any style vehicle or harness until you have seen this big new catalog. 251 illustrations, full descriptions of 138 vehicles and 74 harness designs. Send for it today! Every vehicle sold direct from factory—with 30 days' road trial—2 years' guarantee—and safe delivery assured.

\$30 saved on this up-to-date buggy is an example of how Murray saves you 1/3 to 1/2. Enormous production and direct selling make this possible. Yet we guarantee quality unsurpassed. A postal brings the catalog FREE—write for it today.

The Wilber H. Murray Mfg. Co.
610 Fifth Ave., Cincinnati, Ohio



WAGON SENS

Don't break your back and kill your horses with a high wheel wagon. For comfort's sake get an

Electric Handy Wagon

It will save you time and money. A set of Electric Steel Wheels will make your old wagon new at small cost. Write for catalogue. It is free.

ELECTRIC WHEEL CO., Box 58, Quincy, Ill.