

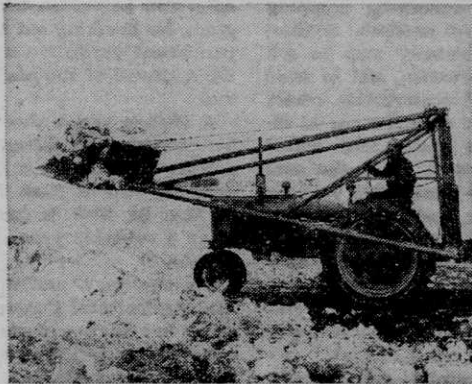


# "No more winter troubles for me like the Blizzard of '49... I'm getting a new '50 FARMHAND LOADER!"

Get the facts about this great FARMHAND "Winter-Package" ... '50 Loader, Snow Scoop, Grapple Fork, V-Plow



**FROZEN, STARVED TO DEATH!** A sickening sight that happened on thousands of ranches and farms during last year's terrible winter. And so unnecessarily, in many cases! High-reach, super-lift FARMHAND Hydraulic Loaders saved many a herd from death after the big blizzards. Can YOU afford to be without this great winter worker on your farm?



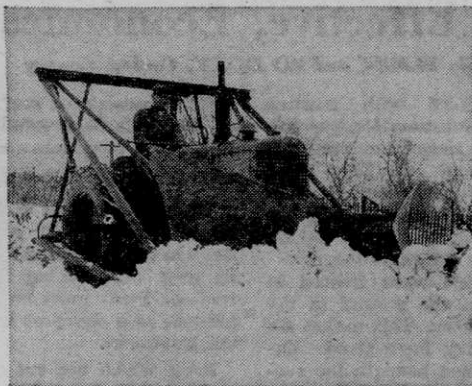
**CLEAR THOSE FEED LOTS!** Your power-packed FARMHAND Loader with Snow Scoop Attachment eats through huge piles of drifted snow ... doesn't just push it around, but picks it up and piles it high out of the way! Quickly opens paths to feed for snowbound stock ... and in emergencies a sling attached to your loader will lift a live heifer!



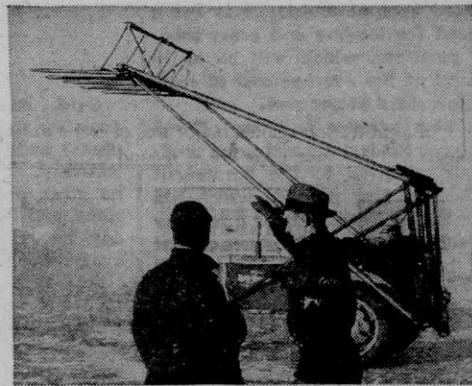
**BREAK FROZEN STACKS?** It's a cinch with your FARMHAND. Bites deep into the frozen mass ... pries big loads loose with "Wrist-Action" efficiency. No other loader can match FARMHAND's amazing 3,000 lb. lift and 21-foot reach. With your FARMHAND clearing the way and carrying hay, when stock can't reach feed you bring feed to them!



**LOOK AT THAT LIFT!** Fit FARMHAND's new Grapple Fork Attachment to your loader and you'll carry giant loads with complete steadiness and stability. Sharp tines, under hydraulic control, pin load to fork, hold it firmly at top, prevent dropping or blowing. Enables you to pick up a half-ton of hay at a "bite" and carry it to hungry stock.



**SNOWBOUND? GET A FARMHAND!** This husky V-Plow Attachment rips through clogged roads where other plows won't... knocks off tops of drifts... never gets hung up... lifts easily over obstructions. Mounts easily on your loader, like all interchangeable FARMHAND attachments. Farmers earn up to \$35 a day clearing roads with FARMHAND!



**DON'T DELAY!** Farmers begged for their FARMHAND attachments last winter when we couldn't fill the demand. See your FARMHAND Dealer now about his special "Winter Package" ... a new, improved '50 Loader with new V-Plow, Grapple Fork and Snow Scoop. You'll save money by ordering now ... and you'll be glad you bought early!

The new FARMHAND Hydraulic Loader for 1950 ... with 6 great improvements

- 1 Constant leveling of attachments in all positions.
- 2 New style pump with Power Take-off projecting through back for driving other implements.
- 3 Spring back-stops to hold attachments positively in any position, without loss of FARMHAND's famous "Wrist-Action" flexibility.
- 4 All attachments of the quick-mounting variety.
- 5 Positive device to prevent attachments going over center.
- 6 New Full-Width Manure Fork, cleans full width of tractor.



**Finer than ever for '50 and no increase in price!**

## Farmhand HYDRAULIC LOADER

Designed by a farmer, built for farmers by  
SUPERIOR SEPARATOR COMPANY • Hopkins, Minnesota  
Farm Machinery Specialists

### SEND COUPON TODAY FOR COMPLETE FACTS

and descriptive literature about the FARMHAND Hydraulic Loader and attachments

Loader  Snow Scoop  Grapple Fork  V-Plow

SUPERIOR SEPARATOR CO., HOPKINS, MINNESOTA

Name.....

Address or R. F. D. Route.....

Town.....State.....