

Flathead-Glacier Calendar Scenes



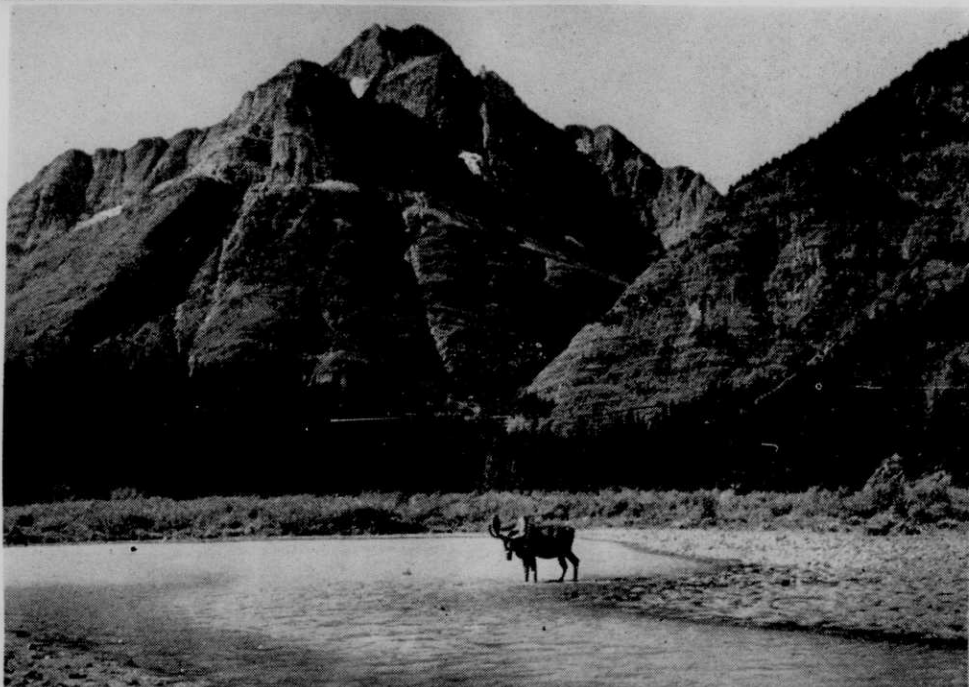
"Who are you?" twins live near Sperry glacier. They're Rocky Mountain goat kids.



Posing for calendar-like picture is this buck in velvet with spruce silhouetted in mountain fog.



At head of Lake McDonald is cabin with Mt. Cannon and Mt. Brown.



At foot of Kootenai peak in Glacier is moose country, where telephoto lens are not needed.



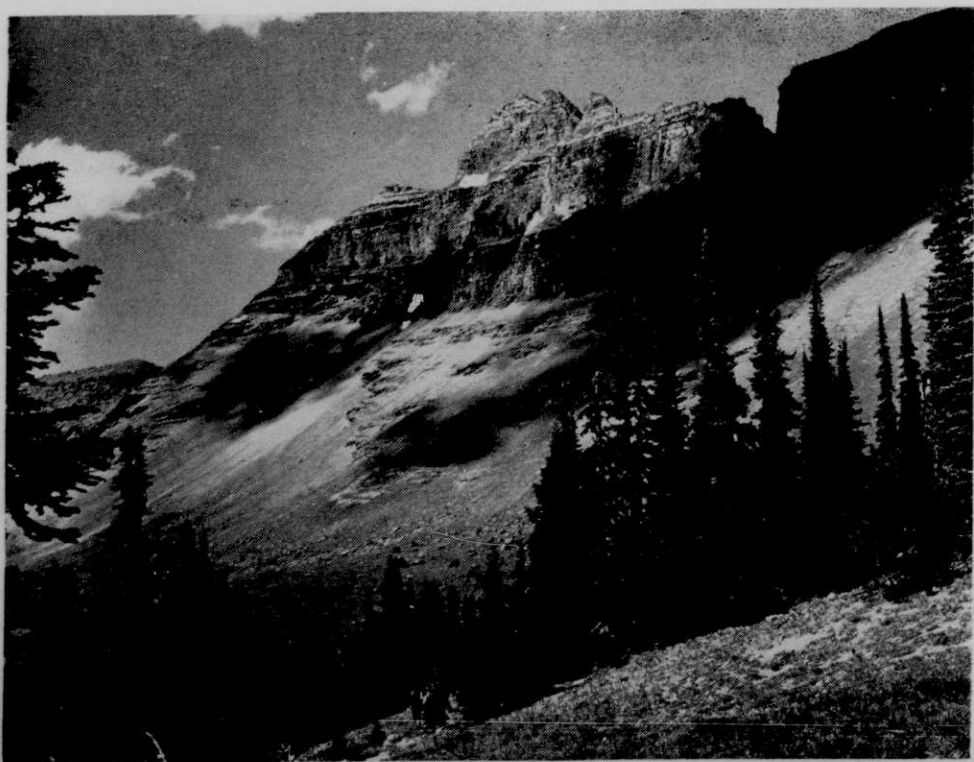
Youngsters practice on ski hill at West Glacier before they are school age. Up hill comes Mike Mains.



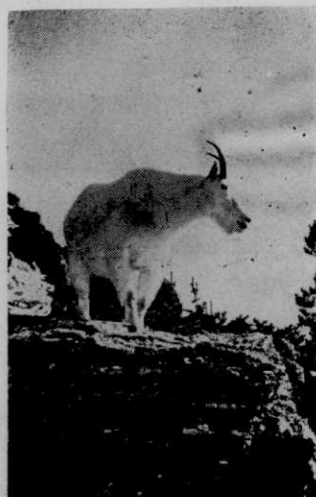
Cabin in the snow is Garden Wall road camp headquarters for crews that open Going-to-the-Sun highway in the spring.



Christmas story has shepherds. Among Montana sheep herding scenes are flocks that graze in summer along Glacier park's east boundary near Chief mountain.



Mountain with Christmas-like name is Cathedral peak in the center of Glacier national park.



Anybody see the twins?



Even concrete dam construction has feature with vaulted church look. This is entrance portal to Hungry Horse dam diversion tunnel now the channel for the swift-flowing Flathead river's south fork.