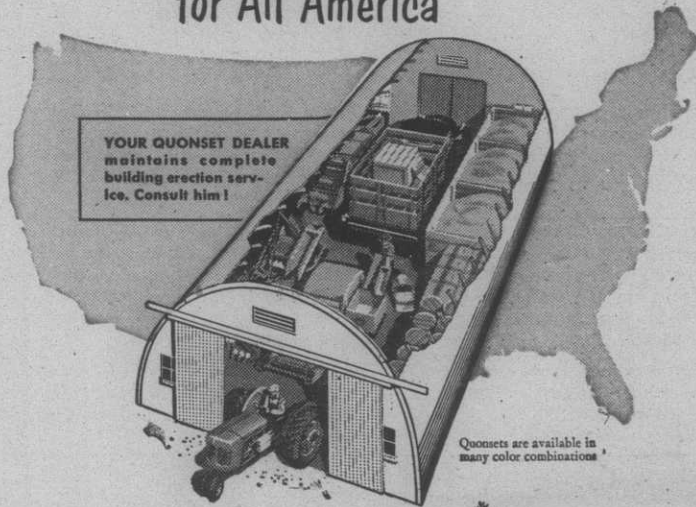


STRAN-STEEL Quonset

The All-Steel Farm Building
for All America



More and more
the American Farmer
is relying on
Quonsets for...



In the last ten years production methods on the farm have been tremendously speeded by the use of modern machinery. Many crops are now harvested in days instead of weeks. This stepped-up productivity has emphasized the need for farm service buildings that are more functional—buildings which are efficient production tools—which supplement machinery in increasing the production of both crops and animals.

With a Stran-Steel Quonset, the farmer has the finest non-combustible farm service building obtainable. It provides maximum comfort, convenience, efficiency, durability and adaptability. Its clean functional lines make it a source of pride and satisfaction. Its low maintenance cost and dependability mark it as a sound investment that will keep on producing year after year.

GREAT LAKES STEEL CORPORATION

Stran-Steel Division • Ecorse, Detroit 29, Michigan



NATIONAL STEEL CORPORATION

Use this coupon for information about Quonsets as a farm production tool. We will include data on sizes, colors, and the name of your nearest Quonset dealer, from whom you can get the detailed costs.

NAME _____
ADDRESS _____
CITY _____
STATE _____ 17

See your dealer
or mail coupon today!

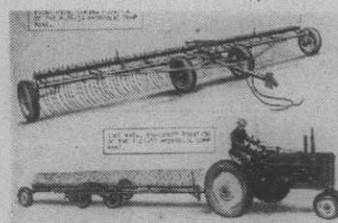
STRAN-STEEL AND QUONSET
REG. U.S. PAT. OFF.

New Products

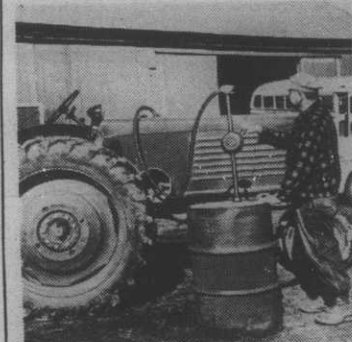
Devices and Equipment For Farm and Home



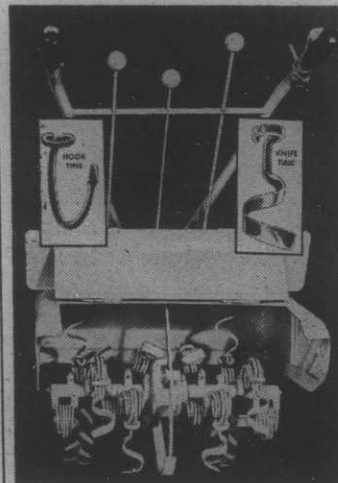
WESTATE LAND LEVELER introduced by Western States Equipment Co. uses a hydraulic mechanism to hold scraper in plane with front wheels of tractor and rear control float, thus greatly reducing length of equipment needed for effective leveling. Control float can be detached and scraper used alone.



HAY-KING RAKE operates hydraulically at high speeds. Pivoted at center to assure clean raking on uneven ground. Available in 14 or 24-foot lengths. Longer model hinges for easy transportation. Made by Automatic Equipment Mfg. Co.



FUEL PUMP is said to eliminate fire hazard in refueling cars, tractors or trucks. Delivers from 10 to 28 gallons per minute at easy cranking speed. Made by Blackmer Pump Co.



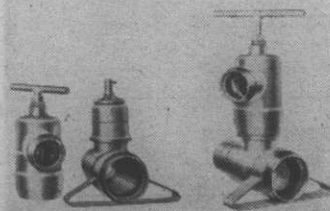
SELF SHARPENING TINES for most all popular makes of rotary tillers permit tilling up to 10 inches deep and are said not to "ball" up when tilling grass. Made by Windolph Tractor Co.

CHEMICAL KILLS MITES

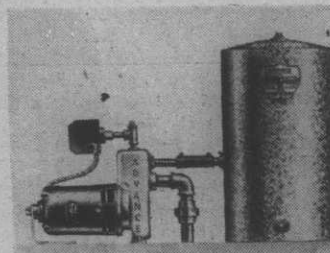
DEVELOPMENT of a new non-toxic chemical to kill mites, tiny bugs which have become a widespread problem for fruit growers, nurserymen, chicken farmers and home gardeners, is announced by Naugatuck chemical division, United States Rubber Co. It will be available to commercial growers for the first time this year under the trade name Aramite.

Tests for control of chicken mites and chiggers have been good, where the chemical has been sprayed in chicken houses and on lawns and grasses, where chiggers lie in wait for a chance to hop on humans or animals.

Aramite's chemical construction is 2-(p-tert-butylphenoxy) isopropyl 2-chloroethyl sulfite. It is being sold as a wettable powder with recommended dosages of between 1 and 2 pounds per 100 gallons of water, depending upon type of application.



HYDRANT VALVE for portable irrigation system is said by the makers, McDowell Mfg. Co., to speed setting up, moving and operation of lateral lines off primary lines. Illustration shows hydrant and valve body assemblies at left and, at right, hydrant in place on valve body.



WATER SYSTEM for home service is wholly self contained yet measures only 12 by 28 inches high. Made in two sizes by the Advance Pump Co., the units deliver up to 972 gallons per hour.



DUST MASK made by the General Scientific Equipment Co. weighs less than 1/2 ounce. Replaceable filters protect from dusts though not from arsenic and other fine toxic dusts.