

PERSONALS.

MARY E. WILSON, 166 West 17th st., who...

LOST AND FOUND.

LOST—On northbound Broadway car, March 1, 1920, gentleman's seal leather folder...

ST. PAUL, CRIPPLED, HEADS FOR HALIFAX

Engine Trouble But No Need of Assistance, Her Commander Reports.

TRANSFERS ARRANGED

Liners Cedric and Canada Will Carry Passengers on Across the Atlantic.

The American liner St. Paul, which sailed hence for Plymouth, Cherbourg...

TWO WOMEN AND A MAN COMMIT SUICIDE

Gas Used in One Case; Pistol in the Others.

The police reported three cases of suicide yesterday. Cecelia Bernier, 37, employed at a Fifth Avenue millinery shop...

RAID ON STEAMSHIP

Crew Snaps Out Lights and Drinks Some Liquors After Seizure.

Guardians Called for Aid

Customs Inspectors Discover Bottles Hidden in All Parts of Presidente Wilson.

Citizens who have stopped worrying about where to conceal their Liberty bonds in order to concentrate on the problem of hiding their private stock from boose burglars...

MRS. HONE'S SANITY TO BE INVESTIGATED

Daughter Wants Mother's Estate Protected.

A commission was appointed yesterday by Supreme Court Justice Erlanger to inquire into the competency of Mrs. Maria C. Hone of 13 Gramercy Park...

Indignation moved United States Marshal McCarthy to indite a public letter yesterday excoriating such agents of the Internal Revenue Department...

CITY HALL TO KEEP ITS PARK FOUNTAIN

La Guardia Vetoes Removal, Calling Work Inartistic.

SPANG CASE JURORS DELIBERATE LONG

Ask for Instructions After Being Out Eleven Hours.

BANKER'S WIFE IS KILLED IN ELEVATOR

Visitor Victim of Accident in Hotel Majestic.

HONOR WOODHEAD'S MEMORY

Services Held for Publisher in the Advertising Club.

RENT COMMISSION URGED AT HEARING

Committee to Recommend Act Regulating Conditions.

NIGHT PATROLS TO NAB GLASS VANDALS

Insurance Men Roused by Window Destruction.

GIRL SCOUTS OPEN DRIVE TO AID POOR

Cover City With Posters in \$975,000 Campaign.

TEN PATERSON REDS PLACED ON TRIAL

Are Ordered by Counsel to Answer All Questions.

Five boxes of small and medium size rugs

20 at \$47.50 each 15 at \$69 each

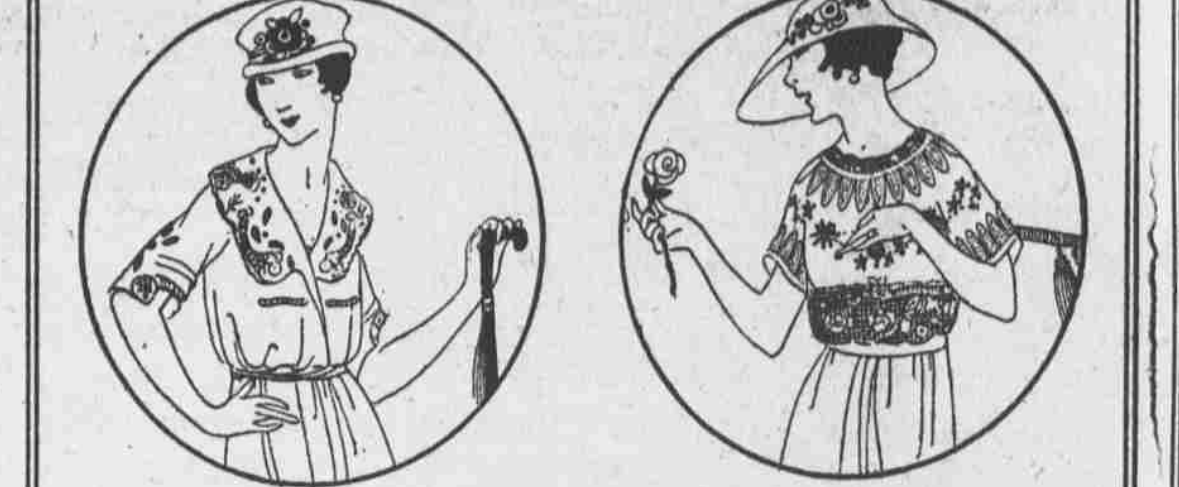
50 at \$75 to \$95 each 27 at \$95 each

12 at \$225 to \$375 each Third Gallery, New Bldg.

THE JOHN WANAMAKER STORE

Store Closes at 5:00 o'Clock. Weather to-day—Fair. THE JOHN WANAMAKER STORE. Broadway at Ninth Street, New York, Formerly A. T. Stewart.

Nouvelles Diverses Spring Showing of Blouses, Corsets, French Lingerie



The Smartness of the Spring Blouse is Determined by Definite Things

This Spring most radical things have happened to blouses to give them charm and character and to make them different from the blouses of all other Springs.

One of these things is the use of lace—not only the kind of lace, but its unusual application. There is, this Spring, a most decided flair for Irish crochet, filet and cluny lace, used to form a structural part of the blouse—merely as "trimming."

An example of this treatment is the attractive blouse at the right, of fine cream-colored cotton net and filet put together to form a little short-sleeved and round-necked blouse, trimmed around the neck and sleeves with cream-colored embroidered batiste.

The blouse at the left makes a very interesting use of cluny lace—and cluny lace since its revival seems to have taken on a new charm—by having it inserted in the large collar and on the elbow of the sleeves. The lace is applied by means of hand embroidery to form a charming design that gives an "over-blouse" effect. The neckline and sides of the bodice are outlined with embroidery in black and white silk; \$32.50.

Second floor, Old Building. The NEW Corsets

Different, charming, lovely. While there is no radical change in the line of season's silhouette, there are many new details in finish—exquisite silk brocades, satin-bound stays, fine silk elastics, pretty laces, embroideries and ribbons.

PARISIENNE CORSETS. We specialize in Parisienne corsets, which give our clientele the advantage of a French corset at a "made-in-America" price.

FEMINA CORSETS. Femina corsets have a new feature—the elastic placed on the outside of the corset. This is particularly effective, as the elastics in back are placed over the back stays about four inches from the lower edge, keeping them from protruding.

L. R. CORSETS. are the tailored member of our corset family. They come in new materials, too.

NEW Lingerie from Paris. Fine, sheer linen, batiste, nixon, chiffon and crepe de chine underthings, all beautifully made by hand; trimmed with real laces, embroidery and hemstitching.

LINEN BODICES. Cut exactly right. Plain hemstitched bodices, \$15; trimmed with real Valenciennes lace, \$20; trimmed with Turkish point embroidery and real Valenciennes lace, \$20 and \$22.50.

LINEN CHEMISES. Beautifully made, over good-fitting designs. Simple, lovely. Trimmed with Turkish point leaves and real Valenciennes lace edge, \$18.75; with hemstitched squares and embroidered dots, \$20; trimmed with embroidery, hemstitching and real lace, \$22.50; with novel airplane design embroidered on chemise, further trimmed with filet lace, \$27.50.

SETS, TOO. Two, three, four and five piece sets, of white linen, pink batiste and pink voile, with fine stitching, and rare lovely laces, \$37.50 to \$29.50. In well fitting patterns.

SILK LINGERIE. Unusual as can be are the original models in gowns and chemises from Paris. Made of sheerest nixon and beautiful crepe de chine.

Imported Shop—Third floor, Old Building.

Remarkable Reductions in the Motor Shop

100 fur-collar overcoats, less than wholesale. \$95 great-coat ulsters, 34 to 37 sizes, for \$55.

\$68.50 half - belted cheviot ulsters, for \$49.50.

\$32.50 wool motor rugs, 56x80 in., for \$22.50.

Burlington Arcade Shop, New Building. Fourth floor, Old Building.



A Collection of Fine English Antiques

Newly Arrived, Au Quatrieme

A shipment of English antiques, bought abroad in December, by Au Quatrieme's collectors has just arrived. It is a collection that contains many fine and beautiful pieces of interest to the lover of antiques.

Particularly fine is a collection of four Adam pedestal dining-tables that includes: One small breakfast table with a pedestal. One table with two pedestals. This may be taken apart to form two console tables; when put together this table will seat six persons. Two large pedestal tables; each will seat twelve persons. Two Welsh dressers. Several fine chair-frames, including a Chippendale wing chair of beautiful line. Two Adam painted chairs. A great walnut and gilt cupboard with glazed doors at the top and bottom. Three pairs of old mirrors, with engraved tops. One pair is lacquered, one of walnut and gilt, the third carved and gilded. Your visit is invited.

Fourth floor, Old Building.