

SHIPPING NEWS FROM ALL PARTS OF THE WORLD

NOTICE TO MARINERS

THE SUN AND THE NEW YORK HERALD'S Ship News Office is in the Barge Office, Ship news information given by U. S. Navy Department Daily Shipping Bulletin. Telephone Bowling Green 9960.

CLOSING OF MAILS.

Transatlantic Mails. WEDNESDAY, July 14. Columbus, 8:30 AM. Thursday, July 15. Europe, Africa and West Asia, str Imperator, 8 AM (sup 10 AM). Italy, str P. Falaschini, 8:30 AM. Italy, str Belvedere, 10 AM. Norway, Sweden, Denmark, Germany, Li. Guiana, Latvia and Finland, also parcel post mails for Norway, Sweden and Denmark, str United States, 11 AM (sup 11:30 AM).

FRIDAY, July 16. Norway, Sweden, Denmark, Germany, Lithuania, Latvia and Finland, also parcel post mails for Norway, Sweden and Denmark, str United States, 11 AM (sup 11:30 AM).

Mails for South and Central America, West India, etc. WEDNESDAY, July 14. Canal Zone, Panama, Peru (except Iquitos), Bolivia and Chile, str Santa Luisa, 7 AM.

THURSDAY, July 15. Brazil, Argentina, Uruguay and Paraguay, str Huron, 9 AM. Brazil, Argentina, Uruguay and Paraguay, str Huron, 9 AM.

THURSDAY, July 15. Brazil, Argentina, Uruguay and Paraguay, str Huron, 9 AM. Brazil, Argentina, Uruguay and Paraguay, str Huron, 9 AM.

DEPARTURE OF STEAMERS. SAIL WEDNESDAY. Albatross, Bilbao, etc. SAIL THURSDAY. Imperator, Southampton, Noon.

PORT OF NEW YORK, TUESDAY, JULY 13, 1920. Steamers Due in New York. DUE JULY 14. From: Albatross, Bilbao, etc.

ARRIVED. Str P. Falaschini (Sp), Barcelona June 25, Valencia 20th, Malaga 28th and Cadix 30th, to the Company and Atlantic, with 36 first, 82 second and 887 steerage passengers and mail.

ARRIVED. Str P. Falaschini (Sp), Barcelona June 25, Valencia 20th, Malaga 28th and Cadix 30th, to the Company and Atlantic, with 36 first, 82 second and 887 steerage passengers and mail.

ARRIVED. Str P. Falaschini (Sp), Barcelona June 25, Valencia 20th, Malaga 28th and Cadix 30th, to the Company and Atlantic, with 36 first, 82 second and 887 steerage passengers and mail.

ARRIVED. Str P. Falaschini (Sp), Barcelona June 25, Valencia 20th, Malaga 28th and Cadix 30th, to the Company and Atlantic, with 36 first, 82 second and 887 steerage passengers and mail.

ARRIVED. Str P. Falaschini (Sp), Barcelona June 25, Valencia 20th, Malaga 28th and Cadix 30th, to the Company and Atlantic, with 36 first, 82 second and 887 steerage passengers and mail.

ARRIVED. Str P. Falaschini (Sp), Barcelona June 25, Valencia 20th, Malaga 28th and Cadix 30th, to the Company and Atlantic, with 36 first, 82 second and 887 steerage passengers and mail.

ARRIVED. Str P. Falaschini (Sp), Barcelona June 25, Valencia 20th, Malaga 28th and Cadix 30th, to the Company and Atlantic, with 36 first, 82 second and 887 steerage passengers and mail.

ARRIVED. Str P. Falaschini (Sp), Barcelona June 25, Valencia 20th, Malaga 28th and Cadix 30th, to the Company and Atlantic, with 36 first, 82 second and 887 steerage passengers and mail.

ARRIVED. Str P. Falaschini (Sp), Barcelona June 25, Valencia 20th, Malaga 28th and Cadix 30th, to the Company and Atlantic, with 36 first, 82 second and 887 steerage passengers and mail.

ARRIVED. Str P. Falaschini (Sp), Barcelona June 25, Valencia 20th, Malaga 28th and Cadix 30th, to the Company and Atlantic, with 36 first, 82 second and 887 steerage passengers and mail.

ARRIVED. Str P. Falaschini (Sp), Barcelona June 25, Valencia 20th, Malaga 28th and Cadix 30th, to the Company and Atlantic, with 36 first, 82 second and 887 steerage passengers and mail.

ARRIVED. Str P. Falaschini (Sp), Barcelona June 25, Valencia 20th, Malaga 28th and Cadix 30th, to the Company and Atlantic, with 36 first, 82 second and 887 steerage passengers and mail.

ARRIVED. Str P. Falaschini (Sp), Barcelona June 25, Valencia 20th, Malaga 28th and Cadix 30th, to the Company and Atlantic, with 36 first, 82 second and 887 steerage passengers and mail.

ARRIVED. Str P. Falaschini (Sp), Barcelona June 25, Valencia 20th, Malaga 28th and Cadix 30th, to the Company and Atlantic, with 36 first, 82 second and 887 steerage passengers and mail.

ARRIVED. Str P. Falaschini (Sp), Barcelona June 25, Valencia 20th, Malaga 28th and Cadix 30th, to the Company and Atlantic, with 36 first, 82 second and 887 steerage passengers and mail.

ARRIVED. Str P. Falaschini (Sp), Barcelona June 25, Valencia 20th, Malaga 28th and Cadix 30th, to the Company and Atlantic, with 36 first, 82 second and 887 steerage passengers and mail.

ARRIVED. Str P. Falaschini (Sp), Barcelona June 25, Valencia 20th, Malaga 28th and Cadix 30th, to the Company and Atlantic, with 36 first, 82 second and 887 steerage passengers and mail.

ARRIVED. Str P. Falaschini (Sp), Barcelona June 25, Valencia 20th, Malaga 28th and Cadix 30th, to the Company and Atlantic, with 36 first, 82 second and 887 steerage passengers and mail.

ARRIVED. Str P. Falaschini (Sp), Barcelona June 25, Valencia 20th, Malaga 28th and Cadix 30th, to the Company and Atlantic, with 36 first, 82 second and 887 steerage passengers and mail.

ARRIVED. Str P. Falaschini (Sp), Barcelona June 25, Valencia 20th, Malaga 28th and Cadix 30th, to the Company and Atlantic, with 36 first, 82 second and 887 steerage passengers and mail.

ARRIVED. Str P. Falaschini (Sp), Barcelona June 25, Valencia 20th, Malaga 28th and Cadix 30th, to the Company and Atlantic, with 36 first, 82 second and 887 steerage passengers and mail.

ARRIVED. Str P. Falaschini (Sp), Barcelona June 25, Valencia 20th, Malaga 28th and Cadix 30th, to the Company and Atlantic, with 36 first, 82 second and 887 steerage passengers and mail.

ARRIVED. Str P. Falaschini (Sp), Barcelona June 25, Valencia 20th, Malaga 28th and Cadix 30th, to the Company and Atlantic, with 36 first, 82 second and 887 steerage passengers and mail.

ARRIVED. Str P. Falaschini (Sp), Barcelona June 25, Valencia 20th, Malaga 28th and Cadix 30th, to the Company and Atlantic, with 36 first, 82 second and 887 steerage passengers and mail.

ARRIVED. Str P. Falaschini (Sp), Barcelona June 25, Valencia 20th, Malaga 28th and Cadix 30th, to the Company and Atlantic, with 36 first, 82 second and 887 steerage passengers and mail.

ARRIVED. Str P. Falaschini (Sp), Barcelona June 25, Valencia 20th, Malaga 28th and Cadix 30th, to the Company and Atlantic, with 36 first, 82 second and 887 steerage passengers and mail.

ARRIVED. Str P. Falaschini (Sp), Barcelona June 25, Valencia 20th, Malaga 28th and Cadix 30th, to the Company and Atlantic, with 36 first, 82 second and 887 steerage passengers and mail.

ARRIVED. Str P. Falaschini (Sp), Barcelona June 25, Valencia 20th, Malaga 28th and Cadix 30th, to the Company and Atlantic, with 36 first, 82 second and 887 steerage passengers and mail.

ARRIVED. Str P. Falaschini (Sp), Barcelona June 25, Valencia 20th, Malaga 28th and Cadix 30th, to the Company and Atlantic, with 36 first, 82 second and 887 steerage passengers and mail.

ARRIVED. Str P. Falaschini (Sp), Barcelona June 25, Valencia 20th, Malaga 28th and Cadix 30th, to the Company and Atlantic, with 36 first, 82 second and 887 steerage passengers and mail.

ARRIVED. Str P. Falaschini (Sp), Barcelona June 25, Valencia 20th, Malaga 28th and Cadix 30th, to the Company and Atlantic, with 36 first, 82 second and 887 steerage passengers and mail.

ARRIVED. Str P. Falaschini (Sp), Barcelona June 25, Valencia 20th, Malaga 28th and Cadix 30th, to the Company and Atlantic, with 36 first, 82 second and 887 steerage passengers and mail.

Str Iberian Prince (Br), Havre June 20, Bremen, Willy & Co, with mds. Str River (Br), Havre June 20, Bremen, Willy & Co, with mds. Str Gibraltar June 6, Philadelphia July 12, to the Atlantic Ocean, Ltd, with mds. Went to pier 4 section 2, West 14th St.

WIRELESS REPORTS. Str Tarentula (Br), Genoa, etc, for New York, is expected to dock Friday morning. Str Frederick VIII (Dan), New York for Liverpool, is expected to dock Friday morning.

By United States Naval Communication Service. Allagash 790 E Ambrose noon 12th. Amerose 110 E Cape Henry noon 12th. Anselmo 100 E Cape Henry noon 12th.

PASSED CITY ISLAND. Str Calvin Austin, Boston for New York. Str Tug, New York for Boston. Str George T. McCaffrey, with 1 (at 11:20 AM); Harrison (at 11:30 PM).

BOUND SOUTH. Str Calvin Austin, Boston for New York. Str Tug, New York for Boston. Str George T. McCaffrey, with 1 (at 11:20 AM); Harrison (at 11:30 PM).

CLEARED. (From U. S. Naval Communication Service.) Str Belgic (Br), Genoa, Hamburg via Halifax-International Mercantile Marine Co. Str Ontario, Boston, New York and Antwerp via Baltimore-Cosmopolitan Shipping Co.

ARRIVED. Str P. Falaschini (Sp), Barcelona June 25, Valencia 20th, Malaga 28th and Cadix 30th, to the Company and Atlantic, with 36 first, 82 second and 887 steerage passengers and mail.

ARRIVED. Str P. Falaschini (Sp), Barcelona June 25, Valencia 20th, Malaga 28th and Cadix 30th, to the Company and Atlantic, with 36 first, 82 second and 887 steerage passengers and mail.

ARRIVED. Str P. Falaschini (Sp), Barcelona June 25, Valencia 20th, Malaga 28th and Cadix 30th, to the Company and Atlantic, with 36 first, 82 second and 887 steerage passengers and mail.

ARRIVED. Str P. Falaschini (Sp), Barcelona June 25, Valencia 20th, Malaga 28th and Cadix 30th, to the Company and Atlantic, with 36 first, 82 second and 887 steerage passengers and mail.

ARRIVED. Str P. Falaschini (Sp), Barcelona June 25, Valencia 20th, Malaga 28th and Cadix 30th, to the Company and Atlantic, with 36 first, 82 second and 887 steerage passengers and mail.

ARRIVED. Str P. Falaschini (Sp), Barcelona June 25, Valencia 20th, Malaga 28th and Cadix 30th, to the Company and Atlantic, with 36 first, 82 second and 887 steerage passengers and mail.

ARRIVED. Str P. Falaschini (Sp), Barcelona June 25, Valencia 20th, Malaga 28th and Cadix 30th, to the Company and Atlantic, with 36 first, 82 second and 887 steerage passengers and mail.

ARRIVED. Str P. Falaschini (Sp), Barcelona June 25, Valencia 20th, Malaga 28th and Cadix 30th, to the Company and Atlantic, with 36 first, 82 second and 887 steerage passengers and mail.

ARRIVED. Str P. Falaschini (Sp), Barcelona June 25, Valencia 20th, Malaga 28th and Cadix 30th, to the Company and Atlantic, with 36 first, 82 second and 887 steerage passengers and mail.

ARRIVED. Str P. Falaschini (Sp), Barcelona June 25, Valencia 20th, Malaga 28th and Cadix 30th, to the Company and Atlantic, with 36 first, 82 second and 887 steerage passengers and mail.

ARRIVED. Str P. Falaschini (Sp), Barcelona June 25, Valencia 20th, Malaga 28th and Cadix 30th, to the Company and Atlantic, with 36 first, 82 second and 887 steerage passengers and mail.

ARRIVED. Str P. Falaschini (Sp), Barcelona June 25, Valencia 20th, Malaga 28th and Cadix 30th, to the Company and Atlantic, with 36 first, 82 second and 887 steerage passengers and mail.

ARRIVED. Str P. Falaschini (Sp), Barcelona June 25, Valencia 20th, Malaga 28th and Cadix 30th, to the Company and Atlantic, with 36 first, 82 second and 887 steerage passengers and mail.

ARRIVED. Str P. Falaschini (Sp), Barcelona June 25, Valencia 20th, Malaga 28th and Cadix 30th, to the Company and Atlantic, with 36 first, 82 second and 887 steerage passengers and mail.

ARRIVED. Str P. Falaschini (Sp), Barcelona June 25, Valencia 20th, Malaga 28th and Cadix 30th, to the Company and Atlantic, with 36 first, 82 second and 887 steerage passengers and mail.

ARRIVED. Str P. Falaschini (Sp), Barcelona June 25, Valencia 20th, Malaga 28th and Cadix 30th, to the Company and Atlantic, with 36 first, 82 second and 887 steerage passengers and mail.

ARRIVED. Str P. Falaschini (Sp), Barcelona June 25, Valencia 20th, Malaga 28th and Cadix 30th, to the Company and Atlantic, with 36 first, 82 second and 887 steerage passengers and mail.

ARRIVED. Str P. Falaschini (Sp), Barcelona June 25, Valencia 20th, Malaga 28th and Cadix 30th, to the Company and Atlantic, with 36 first, 82 second and 887 steerage passengers and mail.

ARRIVED. Str P. Falaschini (Sp), Barcelona June 25, Valencia 20th, Malaga 28th and Cadix 30th, to the Company and Atlantic, with 36 first, 82 second and 887 steerage passengers and mail.

ARRIVED. Str P. Falaschini (Sp), Barcelona June 25, Valencia 20th, Malaga 28th and Cadix 30th, to the Company and Atlantic, with 36 first, 82 second and 887 steerage passengers and mail.

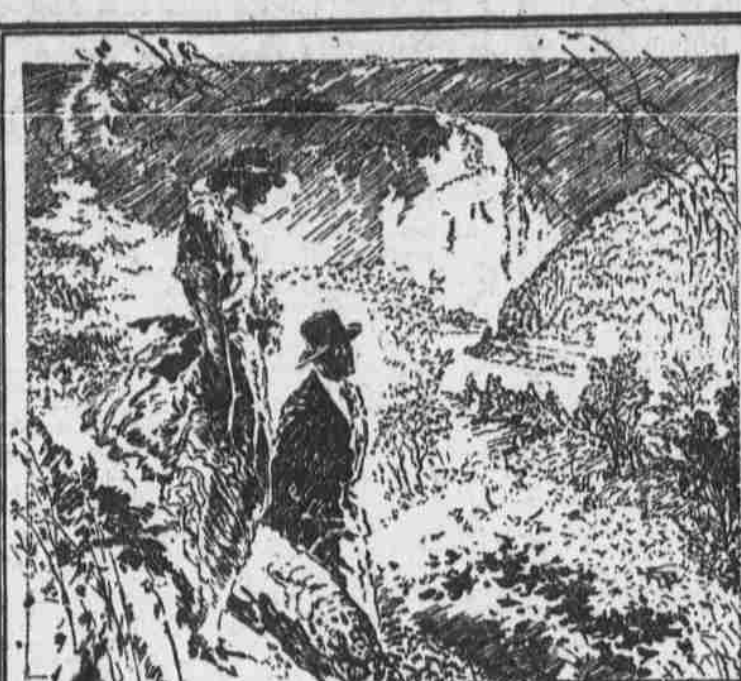
ARRIVED. Str P. Falaschini (Sp), Barcelona June 25, Valencia 20th, Malaga 28th and Cadix 30th, to the Company and Atlantic, with 36 first, 82 second and 887 steerage passengers and mail.

ARRIVED. Str P. Falaschini (Sp), Barcelona June 25, Valencia 20th, Malaga 28th and Cadix 30th, to the Company and Atlantic, with 36 first, 82 second and 887 steerage passengers and mail.

ARRIVED. Str P. Falaschini (Sp), Barcelona June 25, Valencia 20th, Malaga 28th and Cadix 30th, to the Company and Atlantic, with 36 first, 82 second and 887 steerage passengers and mail.

ARRIVED. Str P. Falaschini (Sp), Barcelona June 25, Valencia 20th, Malaga 28th and Cadix 30th, to the Company and Atlantic, with 36 first, 82 second and 887 steerage passengers and mail.

ARRIVED. Str P. Falaschini (Sp), Barcelona June 25, Valencia 20th, Malaga 28th and Cadix 30th, to the Company and Atlantic, with 36 first, 82 second and 887 steerage passengers and mail.



See the YACHT RACES From the Great Steel Steamer PLYMOUTH of the Fall River Line. The Plymouth will make the trip each race day. It is an ideal ocean-going steambot perfectly equipped for yacht race service under all weather conditions.

Guaranty Trust Company of New York. Capital and Surplus - \$50,000,000. Resources more than \$800,000,000. 140 BROADWAY. FIFTH AVENUE & 44TH STREET. MADISON AVENUE & 60TH STREET.

WARD LINE S. S. ORIZABA NEW YORK-YAHVE. ROCHAMBEAU. FRANCE. LAFAYETTE. LA SAVOIE. LA LOIRAINNE. LA TOURAINE. COMPANIE GENERALE TRANSATLANTIQUE. Express Postal Service.

FRENCH LINE COMPAGNIE GENERALE TRANSATLANTIQUE. Express Postal Service. NEW YORK-YAHVE. ROCHAMBEAU. FRANCE. LAFAYETTE. LA SAVOIE. LA LOIRAINNE. LA TOURAINE.

BERMUDA. Only 2 Days from New York. Cool-Average Summer Temperatures 70-80. SUMMER VACATION TOURS including steamer, hotel and side trips.

NEW YORK TO ROTTERDAM Via Plymouth and Boulogne-Sur-Mer. ROTTERDAM... July 21, Aug. 25, Oct. 3. NOORDAM... Aug. 4, Sept. 10. NEW AMSTERDAM... Aug. 10, Sept. 14. RYNDAM... Aug. 18, Sept. 22. General Passenger Office, 24 State St., N. Y.

PLYMOUTH YACHT RACES. See the YACHT RACES From the Great Steel Steamer PLYMOUTH of the Fall River Line. Tickets \$16.20 Each Race. Capacity limited to afford maximum comfort.

VIEW THE INTERNATIONAL YACHT RACES OVER THE ENTIRE COURSE. From Steamboat Co Steamer "TAURUS". Hudson River by Daylight. Tickets \$10.80 including breakfast and lunch.

BEAR MOUNTAIN. Hudson River Day Line. Eastern Steamship Lines, Inc. To BOSTON METROPOLITAN LINE All the way by water via CAPE COD CANAL.

YACHT RACES Start and Finish Str. "POCOHONTAS" Inc. Battery Each Racing Day, July 15, 17 & 20. FARE \$5.00 MUSIC, REFRESHMENTS.

AUSTRALIA NEW ZEALAND-SOUTH SEAS. Via Tahiti and Rarotonga. Mail and passenger service from San Francisco, sailing every 15 days. COOK'S Travel Service. THOS. COOK & SON.

RED BANK. SIGHT SEEING YACHTS. "Tourist & Caswell" Around New York. Sight seeing yachts for hire. Tickets \$10.00.



Egypt The Nile Valley with its richness and beauty is dominated by the impenetrable mystery of the massive Sphinx, the silent symbol of eternity. THE EQUITABLE TRUST COMPANY OF NEW YORK. BANKING, TRUSTS & INVESTMENTS, SAFE DEPOSIT VAULTS. 37 Wall Street New York.

SEE THE YACHT RACES FROM THE DECK OF THE FAST STEAM YACHT KANAWHA. Splendid Accommodation; Twenty Dollars a Day For Person. Tickets at 68 Broad Street, Capt. Swift, Room 601. Tel. Broad 7562.

INTERNATIONAL YACHT RACES. SCHOONER YACHT AMERICA. Tickets \$10.00 including war tax and light dues. All modern accommodations. INTERNATIONAL YACHT RACES. SCHOONER YACHT AMERICA. Tickets \$10.00 including war tax and light dues.

AMERICAN & AFRICAN LINE FROM NEW YORK DIRECT TO CAPETOWN AND DURBAN. ALL OUTSIDE ROOMS. NORTON LILLY & CO. 10 N. LEAVEN ST., NEW YORK CITY.

HOLLAND AMERICA LINE NEW YORK TO ROTTERDAM. Via Plymouth and Boulogne-Sur-Mer. ROTTERDAM... July 21, Aug. 25, Oct. 3. NOORDAM... Aug. 4, Sept. 10. NEW AMSTERDAM... Aug. 10, Sept. 14. RYNDAM... Aug. 18, Sept. 22.

SWEDISH AMERICAN LINE Direct to GOTHENBURG-SWEDEN. Short Route to Sweden, Norway, Denmark, Finland, Russia, Germany, etc. S. S. STOCKHOLM... JULY 31, SEPT. 16. Superior Accommodations, 1st, 2nd & 3rd Class. Passenger Office, 24 State Street, New York.

BOSTON and New England Points via FALL RIVER LINE. Four Splendid Steamers in Service. Selling Daily, Including Sunday. Orchestras Concerts. Excellent Cuisine.

BEAR MOUNTAIN. Hudson River Day Line. Eastern Steamship Lines, Inc. To BOSTON METROPOLITAN LINE All the way by water via CAPE COD CANAL.

YACHT RACES Start and Finish Str. "POCOHONTAS" Inc. Battery Each Racing Day, July 15, 17 & 20. FARE \$5.00 MUSIC, REFRESHMENTS.

RED BANK. SIGHT SEEING YACHTS. "Tourist & Caswell" Around New York. Sight seeing yachts for hire. Tickets \$10.00.