

# MORNING APPEAL.

VOL. 22.

CARSON CITY, NEVADA: SUNDAY MORNING, APRIL 15, 1883

NO. 35

Nevada  
 State  
 Prison

## MORNING APPEAL

Published every morning (Mondays excepted) by  
**S. P. DAVIS.**

A Daily Newspaper, devoted to Politics,  
 General News and Local Affairs.  
**OFFICE** On Second street, opposite the  
 western front of the State Capitol.

**TERMS OF SUBSCRIPTION:**  
 One copy, one year, by mail.....\$8 00  
 One copy, six months, by mail..... 4 00  
 One copy, three months, by mail..... 2 00  
 Payments on subscription, in advance  
 The APPEAL will be delivered to the  
 citizens of Carson at 25 cents per week.

### HOTELS.

#### THE ARLINGTON HOUSE.

**JUDGE CUREY, Prop'r.**  
 Formerly of the Cary House, Placerville, California)

The Leading Hotel of Carson

**A N ELEGANT BRICK STRUC-**  
 ture, capable of accommodating  
 100 guests. Two minutes' walk from  
 the depot. Provided with all the mod-  
 ern improvements. The cuisine is un-  
 der the management of experienced  
 cooks and is not surpassed in the State.

#### ORMSBY HOUSE

CARSON CITY, NEV.  
 SHARP BROTHERS, proprietors

This hotel is the most pleasantly and cen-  
 trally located in the city, being near the prin-  
 cipal business houses and the State Capitol.  
 The Culinary Department is under the man-  
 agement of experienced heads, and no expense  
 will be spared in supplying the table with the  
 best the market affords.

J. W. SHARP (formerly of the Nevada  
 House, Napa, California), Manager.

#### THE ORMSBY HOUSE

is the headquarters for all the stage and  
 touring Carson.  
 Single Rates.....\$2, \$3 50 and \$4  
 Beds.....50 cents each

#### CARSON EXCHANGE HOTEL

#### AND RESTAURANT

(Opposite the Railroad Depot)  
 E. WALKER, Prop'r.

Board, per Week.....\$5 00  
 Board and Room, per Week,  
 from.....\$7 00 to 9 00

The best accommodation for the price  
 of any house in the State.

**DINNER AT TWELVE O'CLOCK.**  
 The very best of

**WINES, LIQUORS AND CIGARS**  
 kept constantly on hand. Give me a  
 call.

#### ST. CHARLES HOTEL,

Corner Carson and Third Sts.

CARSON, - - - NEV.

**TWIN FAR-FAMED HOTEL**  
 still lives and prospers under the  
 efficient management of its proprietor.

**COMFORTABLE ROOM & A GOOD TABLE**  
 Provided for all the patrons.

**GEORGE TUFLEY,**  
 Proprietor

#### THE STEAMER NIAGARA

LAKE TAHOE.

**CAPT. TODMAN.**

**WILL LEAVE GLENBROOK**  
 every Tuesday at 7:30 a. m. for  
 a tour of the Lake, stopping at the

**Tahoe House, McKinney's, Tollace  
 House, Rowlands,**

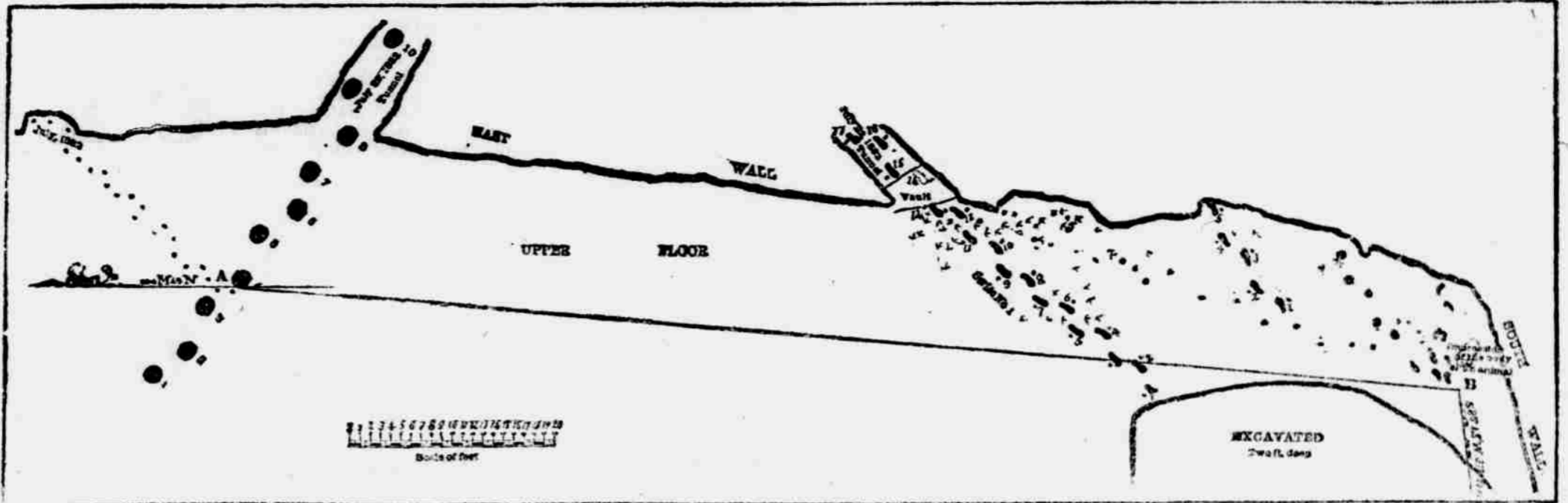
and back to Glenbrook, reaching the  
 latter place at 1:30, and connecting with  
 the down stage.

Round Trip.....\$4 00  
 To any intermediate Point..... 2 00  
 Children - Half Price.  
 (Incl. of)

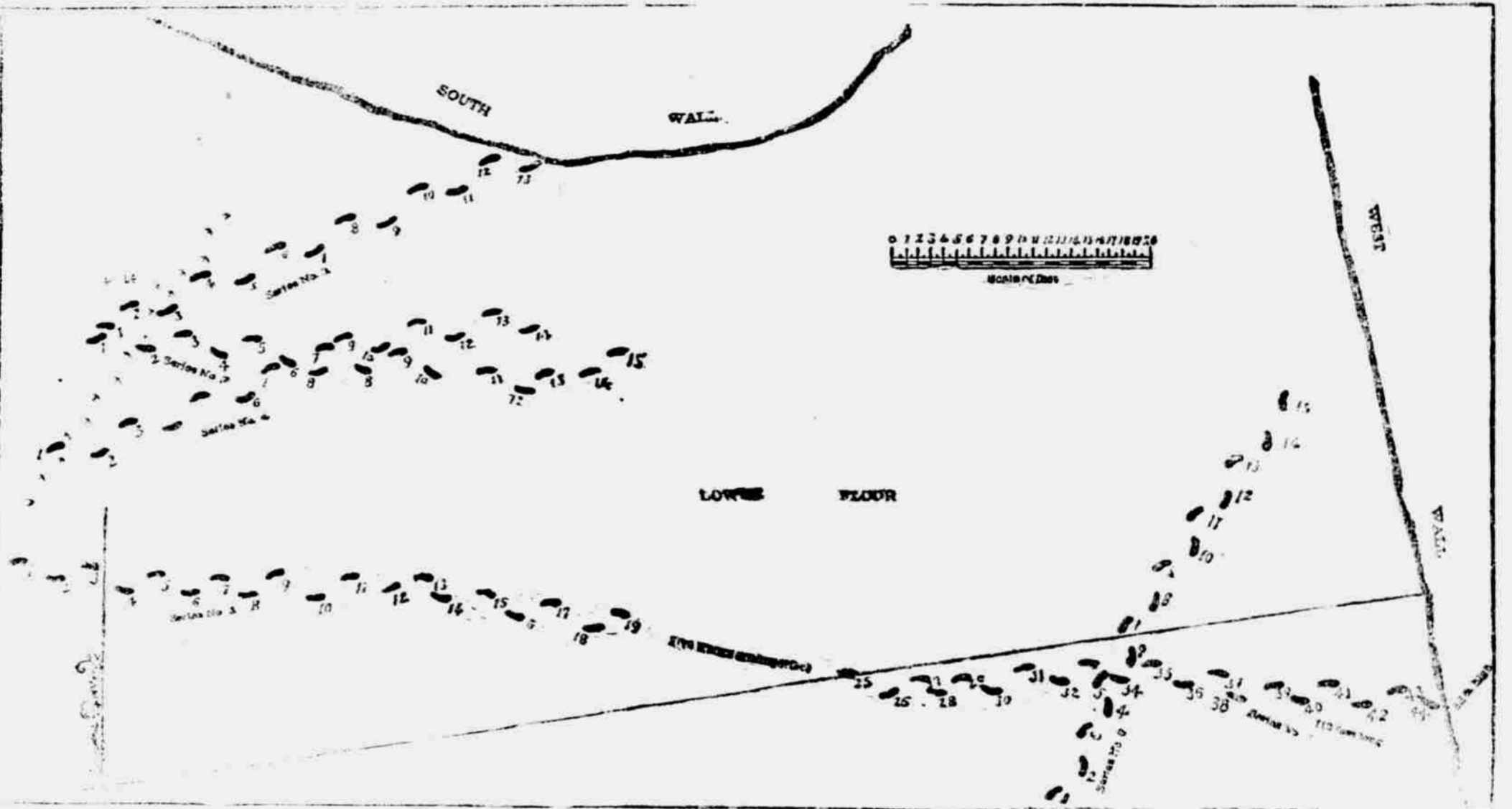
**F. J. WHITE, M. D.**

**OFFICE IN REAR OF THAK-  
 ER'S Drug Store, Carson City.**

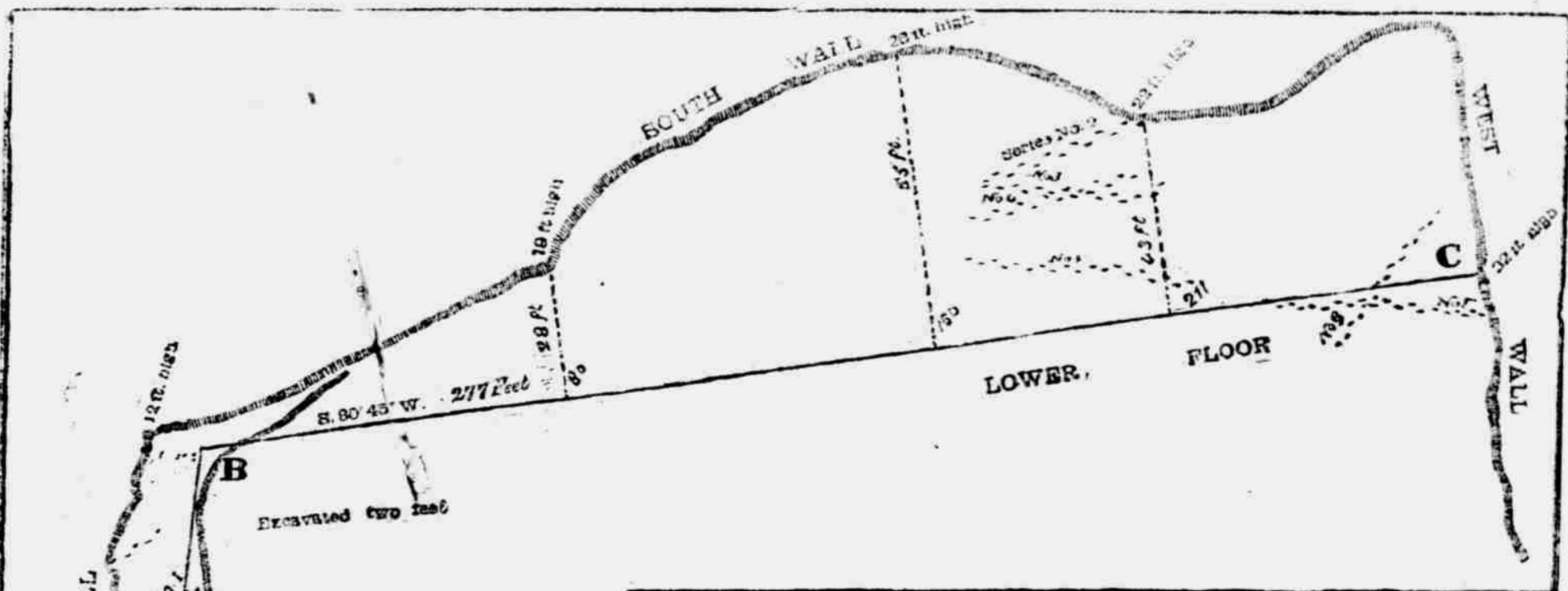
## THE QUARRY FOOTPRINTS.



PREHISTORIC FOOTPRINTS. DIAGRAM NO. 1.



PREHISTORIC FOOTPRINTS. DIAGRAM NO. 2.



PREHISTORIC FOOTPRINTS. DIAGRAM NO. 3.

### The Prehistoric Footprints.

The above diagrams, which have been carefully compiled from actual surveys, correctly represent the prehistoric tracks at the State Prison, which during the past year have caused a profound sensation all over the world. Carson people hardly realize how these tracks are regarded abroad. In England, Germany, France and Russia they have been discussed by scientific men, illustrated and made the theme of debate in nearly every leading scientific

school on the globe. Yet right here in Carson one meets scores of people daily who have never taken the trouble to go out and look at a curiosity that several European savants have traveled across the ocean and spent thousands of dollars to see. They have been so fully described, however, in these columns that there is little left except to print the diagrams, which tell the story better than columns of type.

Diagram No. 1 represents a general view of the tracks, with the mastodon's on the left and the man's tracks on the right.

Diagram No. 2 is a general view of the human footprints in the lower floor.

Diagram No. 3 gives an extended view of all that has so far been discovered.

Series No. 2 consists of 13 human footprints 21 inches long, and 7 inches wide, going in a southwesterly direction until lost in the sandstone bluff at the south wall, which is 22 feet high at this point. The man had a peculiar shaped foot, and may be said to have toed the mark, he walked as straight as a surveyor running a line. The quarry is now being worked at this bluff, and we may soon expect more footprints to be found. This series covers 40 feet of ground.

Series No. 3 contains 15 human tracks, 18 inches long and 7 wide, going nearly west; with the toes turned out and

stepping rather irregular.

Series No. 4 has 14 tracks, 18 inches long, going nearly parallel to No. 2, and crossing No. 3.

Series No. 5 extends over 112 feet of ground and contains 44 human footprints 18 inches long and 6 inches wide. But 5 tracks, from 19 to 25, are not distinct enough to represent, the shale being destroyed by carts hauling off the rock. These tracks are irregular in their direction, and disappear under the west wall, which is 32 feet high.

Series No. 6 has 15 human tracks about the same size as the last; they are going northwesterly, and cross No. 5 about 24 feet from the west wall. Bird tracks, covering 23 feet of ground, cross series No. 2, 3 and 4. These are all shown in diagram No. 2.