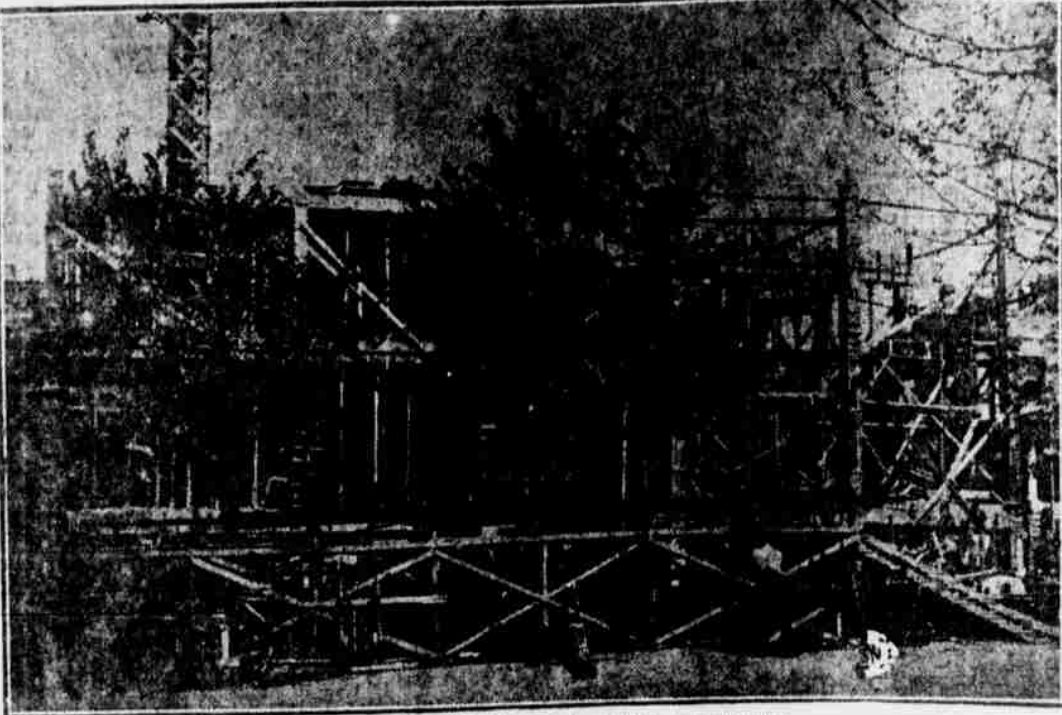


Y. W. C. A. Factor in Tulsa's Progress; Now Has Membership of More Than 800



New home of Tulsa Y. W. C. A. under construction

Donating of a present membership of over eight hundred, and a \$150,000 association building, which when completed will be the finest Y. W. C. A. home in the state, the Tulsa Y. W. C. A. has shown remarkable progress since March 6, 1914.

when it was launched. Bit by bit the Young Women's Christian association, under the careful supervision of a number of Tulsa's best known club women, has grown to become a factor in Tulsa's achievements. In January of 1914, a small

group of women met in the home of Mrs. A. W. Roth to consider possibilities of Tulsa as a field for the Young Women's Christian association. Mrs. Roth, acting upon the advice of the southwest field committee of which she is a member called this meeting. Tulsa women present were Mesdames A. W. Roth, E. W. Craig, A. Ernberger, Dan J. Davison, R. S. Wagner, W. W. Brodie, Hutchinson and Randolph. These women later constituted the provisional, the first board of the local Y. W. C. A. and at a meeting on March 6, 1914 incorporated the Young Women's Christian association. This formed the nucleus for the organization here which later became affiliated with the national organization.

Secured Property at Once.

The first act of this board was to purchase the property, which is the site of the new association building at 126 West Fifth street. Through the kindness of E. Rogers Kemp and others the cottage on the site was repaired, and was used for two years as headquarters, until excavation for the new building began. Club and individuals furnished the cottage and made it ready for occupancy in May, 1914.

The preliminary club was the Y. W. C. A. club composed for the most part of young business women of which Miss Lane Ihre was president. This club played no small part in

getting first membership and secured diligently during the building campaign.

The first real undertaking of particular note was the establishing of the cafeteria, which was opened December 12, 1914, at the present location, 12 West Fourth street. Mrs. W. N. Sill was appointed first chairwoman of cafeteria committee.

They seemed to be showing an interest in the undertaking and in October of the same year, Miss Mildred Corbett, city secretary of the southwest field arrived to assist and remained until activities were well organized. Mrs. A. A. Richards up to this time had acted as chairman of the membership committee and on Sunday, November 1, a mass meeting was held in the Presbyterian church and 480 women and girls were announced. The association was then an assured fact and immediately began work affiliated with the national Y. W. C. A.

Permanent Board Elected.

The next step made was the election of a permanent board of which Mrs. A. W. Roth was made president, Mrs. W. N. Sill, vice-president, Mrs. W. W. Brodie, recording secretary, Mrs. J. D. Richards, treasurer, and Miss Caroline Drake, corresponding secretary, and Mesdames J. A. Hull, Fred S. Clinton, A. A. Richards, R. S. Wagner, A. Ernberger, E. W. Craig, T. E. Smiley, R. J. Heald, R. Shirk, W. Mayginnis, W. I. Williams, C. C. Marze, A. J. Rudd, O. H. Leonard, R. F. MacArthur, Dan J. Davison, J. W. Dodds, F. D. Oiler, Frank Haskell and Lodovico French.

The first secretary here was Miss Wenonah Marlett, a young Canadian, who is now in association work in Canada.

During the year 1915 women were busily engaged in perfecting the organization by adding departments and giving each a permanent head with committees to assist. The six committees then formed chairman were educational committee, with Mrs. W. I. Williams as chairman religious work, Mrs. A. Ernberger, house committee, Mrs. E. J. Heald, board and room committee; Mrs. Fred Oiler, social committee; Mrs. Frank Haskell, and cafeteria committee, Mrs. W. N. Sill.

Every member of the Young Women's Christian association was a true and loyal booster and at the end of the first year the membership roll of one thousand paid up members. At this time, January 1, 1915, Miss Florence Hansen came to be general secretary of the local association, but on April 19 of this year, Miss Hansen accepted the call to be assistant pastor of the First Presbyterian church of this city. Miss Hansen was an earnest and cheerful worker and will still take an active part as leader of the business women's clubs.

Money Raised for Building.

The year 1915 is November, marks real effort and wonderful achievement of the Y. W. C. A. It was at this time the building campaign was held. At the end of arduous but successful campaigns, funds to amount of \$148,000 were reported, pledged to erect the building. The



Photo by Tipton
Mrs. A. W. Roth, President Tulsa Y. W. C. A.

mark set for the campaign had been \$125,000 and through the pictures were shown the work and expense for labor and materials will more than make up the difference.

The building committee appointed at this time was Mrs. A. W. Roth, chairman, Mrs. J. D. Richards, vice-chairman, Mr. R. M. Moody, treasurer, and Mesdames J. M. Gillette, A. T. Allison, J. A. Chapman, E. H. Haskell, J. A. Hull, W. Sinclair, R. M. Moody, and Messrs R. M. McFarlin, J. H. McEwen, J. A. Hull and E. W. Sinclair.

The building already under construction will provide a boarding hall, accommodations for 65 girls, and general association accommodations such as swimming pool, gymnasium, domestic science, domestic art, girls' department, club rooms, cafeteria, rest and recreation rooms and Bible class rooms. In fact all departments and conveniences of the modern association building will be included.

The Young Women's Christian association has been very active this year though due to housing conditions some departments have been unable to pursue their particular work as thoroughly as would otherwise been done. Secretaries for the various departments this year are Miss Ethel Maud Smith, employment and room director; Miss Mabel Murrell, travelers' aid; Miss Nellie Huggins, business secretary; Miss Rose Baker, cafeteria director; Miss Eva Horner, girls' departments.

Homes, churches and schools have served as meeting places for clubs of the association who will meet in the association building when it is completed. Business women, Beta business girls, Tulsa Business College Girls' Thursday club and K. A. C. club all hold regular weekly meetings for the Red Cross work and Bible study.

An organization such as the Young Women's Christian association is with a purpose to provide a "mass of friendliness" for all young women without distinction of class or creed, a place of social service for the girl who has had training, help for the girl who never had a chance, protection for the stranger within our gates and to provide the gospel which young women may practice for mutual benefit.

The present board is Mrs. A. W. Roth, president; Mrs. R. F. MacArthur, vice-president; Mrs. O. H. Leonard, second vice-president; Mrs. W. H. Peck, recording secretary; A. J. Rudd, corresponding secretary; Mrs. A. D. Richards and Mesdames S. W. Mayginnis, W. N. Sill, J. A. Chapman, Dan J. Davison, Frank Haskell, E. P. Harwell, W. M. Hake, R. M. Moody, George Harrington, Randolph Shirk, W. I. Williams, H. L. Fitzgerald, F. S. Clinton, A. Ernberger, J. A. Hull, J. M. Gillette, Charles Grimes and Miss Florence Heald.

Departments Flourishing.

Younger than the association but one of the most important departments is the girls' work department, of which Mrs. George Harrington is

committee chairman and Miss Est. Hazel secretary. This special work was begun in 1914 and working with organized teachers' alliance, with patron teachers' alliance. As a result of this first year show high grade school clubs were organized, many as patriotic lectures with 400 grade school girls enrolled. During the summer of 1915 the girls' department had one month of camp at Tahlequah and sand springs. The last year three weeks were spent at Sand Springs.

A committee has been appointed

with Mrs. Iva J. Davison as chairwoman, which is now contemplating several proposed sites for the permanent Y. W. C. A. camp.

Other committees which are now in charge of the various departments and activities of the association here are girls' department, Mrs. George Harrington, chairman business department, Mrs. N. W. Mayginnis; social department, F. S. Clinton; summer camp committee, Mrs. Dan J. Davison; religious work, Mrs. Charles W. Grimes; extension committee, Mrs. W. N. Sill; travelers'

aid, Mrs. H. L. Fitzgerald; educational and employment, Mrs. W. I. Williams; and membership, Mrs. W. H. Hake.

Good Idea.

"These disloyal citizens who are released on bonds—"

"Yes?"

"Make 'em put up Liberty bonds!"

We buy clean, white rags, bring them to The World Publishing company and ask for Mr. Mac Bruns—Adv.

SHERBETS —and— ICES

In harmony with the desire of the government to conserve sugar we are complying with the request to all ice-cream manufacturers, caterers and hotels not to manufacture or offer for sale Sherbets or Ices, which are considered non-essentials, but are advised to confine our business to the use of dairy products.

We are making a Standard Ice-Cream and you can depend on it as a wholesome, palatable treat as well as one of the most valuable foods, especially for children.

Call your druggist, or better still, take a package home with you.

PURITY ICE CREAM COMPANY

Don't forget to buy W. S. S.



First home of Tulsa's Y. W. C. A.

The Famous Hartmann
WARDROBE TRUNK
will add a pleasure to your vacation trip

Here it is—a Wardrobe Trunk that surpasses any other trunk on the market. It carries more clothes in less space without a wrinkle at the end of the trip. Made in two sections, one a wardrobe and the other a dresser. Half of the top opens, enabling you to open trunk in the corner of a room. The utmost beauty and completeness has been attained in the Hartmann Wardrobes. Gibraltarized construction. Paracentric locks. Sanitary removable laundry case. Shoe box. Latest improved interchangeable hat and drawer section. Locking bar. Secret jewel Drawers. A unique device for carrying an electric iron. Spot welded drawer frame support. Nickled steel angles on all drawer fronts. To lock simply tap the keyless lock with your foot. An exclusive feature found only in—

HARTMANN WARDROBE TRUNKS

There is no effort, no fumbling, no bolts—the climax of convenience. The padded top used in the Hartmann keeps your clothes without a wrinkle. We carry various styles in the Hartmann trunk. See them before you buy. It will mean a great saving to you. The only exclusive Hartmann agency in Tulsa. Buy your trunk direct and get a factory guarantee.

Priced \$27.50 to \$200.00

ARE YOU GOING AWAY?

YOU'LL WANT THE BEST LUGGAGE—THE ELEPHANT FIRST—THE ELEPHANT LAST

COMMENCING MONDAY WE WILL REDUCE OUR STOCK AT A REDUCTION OF 25% TO 30%. WE BOUGHT HEAVY BEFORE THE INCREASE IN PRICES AND ARE GIVING YOU THE OPPORTUNITY TO SAVE MONEY.

Every Article Sold on Factory Guarantee

We put your name or initials in Gold, Free, on all trunks and leather goods.

SUIT CASES and HAND BAGS
and Leather Goods at Reduced Prices

Look Over This List

General Purpose Trunk	Tool Bags	Jewel Boxes
Steamer Trunks	Coin Bags	Drinking Cups
Men's Trunks	Two-Story Bags	Attorneys' Portfolios
Wardrobe Trunks	Leather Shirt Bags	Dressing Cases with Fittings in Ebony and Persian Ivory
Automobile Trunks	Collar Bags	Covered Flasks
Skirt Tray Trunks	Fibergrass Bags	Bill Books
Women's Accessory Trunks	Bamboo Bags	Leather Photo Holders
Tool Cases	Coat Cases	Rite-Hits and Berth High Wardrobe Trunks
Oxford Bags	Suit Cases	Men's Pocketbooks
Ladies' Hand Bags	Fibergrass Suit Cases	Leather Novelties
Ladies' Traveling Bags	Kano Suit Cases	Ladies' Pocketbooks
Umbrellas	Bamboo Suit Cases	
Toilet Rolls	Fitted Suit Cases	
Novelty Work Boxes	Carry-Alls	
	R. B. Pass Books	
	Cigar Cases	

ALL OTHER MAKES
—of—
WARDROBE TRUNKS

Closing Out at
25 Per Cent to 35 Per Cent OFF

EVERYTHING for the SOLDIER

Full display of Army Kits, Photo Cases, Toilet Cases, Trench Mirrors, Identification Bill Folds and Card Cases, Drinking Cups, Trench Cigaret Cases, Tobacco Pouches and Pipes, Waist and Leg Money Belts, Officers' Shirt Cases, Our "Adjusto Roll-Ups," House Wives, Writing Tablets, Officers' Dispatch Bags. Everything for the soldier.

ARMY LOCKERS
Automobile Trunks, Ladies' Hat Boxes and Other Necessary Traveling Equipment
at REDUCED PRICES
All Deliveries Receive Prompt Attention

THE ELEPHANT TRUNK FACTORY

Buy War Savings Stamps

105 S. Main St. Next to Vandever's

Next to Vandever's Phone 3883

Buy War Savings Stamps