

'PIGEON' IDENTIFIED WITH ANOTHER CRIME

Johnson Charged With Being Man Who Took Automobile From Garage at Point of Revolver.

HELD FOR BANK ROBBERY

Identified as one of the men who robbed a bank at Muskogee, Okla., a Tulsa newspaper on January 15. John Berry, held on a charge of being charged as the man who robbed the bank at Muskogee, Okla., on January 15, will be indicted with the former action regarding the robbery of the bank at Muskogee, Okla., on January 15.

The identification of Berry as the man who robbed the bank at Muskogee, Okla., on January 15, was made by the Tulsa newspaper on January 15. John Berry, held on a charge of being charged as the man who robbed the bank at Muskogee, Okla., on January 15, will be indicted with the former action regarding the robbery of the bank at Muskogee, Okla., on January 15.

John Berry, held on a charge of being charged as the man who robbed the bank at Muskogee, Okla., on January 15, will be indicted with the former action regarding the robbery of the bank at Muskogee, Okla., on January 15.

KENTUCKY MINISTER ATTRACTS ATTENTION

The Rev. R. E. Akin of Louisville Announces Innovations But Incomparable to Cooke.

LOUISVILLE, Ky., Sept. 27.—Both pastors and laymen in Louisville are centering their attention on the First Unitarian church where the Rev. R. Ernest Akin, 34, has accepted the pulpit and announced innovations in church conduct. Reverend Akin steps from the Methodist pulpit to the Unitarian church, his recent charge having been the largest Methodist church in Detroit, located near the Ford automobile plant.

Pastor Akin attracted attention upon taking over the Unitarian church here by the announcement that he intended building up a new church solely for "young folks" as he says in the Detroit church.

THOUGHT HE HAD TO GIVE UP WORK

Shreve Says He Could Find Nothing to Help Him—Tanlac Makes Life Work Living.

"I have tried all kinds of medicines and treatments for my stomach, but nothing ever gave me the relief that Tanlac gave me. I was a sufferer of 2000 Harrison street, Oakland, Cal.

CITY NEWS IN BRIEF

DR. A. H. WILSON has returned to Tulsa from an extended vacation trip.

JOHN H. SPENCER, court clerk, was in Bartlesville yesterday on a business trip.

MINOR ALLEN and WILIE HARRIS of Tulsa, Okla., are visiting their father, W. J. Harris, and friends in Muskogee.

RAM KENNEDY did not fight in the fight between him and Sammie Williams, which he won by a unanimous decision.

DR. ARTHUR CAMPBELL, of this city, has invented an improved instrument for use in removing tumors which it is said is expected to revolutionize the treatment of malignant tumors.

DR. ARTHUR CAMPBELL, of this city, has invented an improved instrument for use in removing tumors which it is said is expected to revolutionize the treatment of malignant tumors.

MR. H. F. WALL, of South Chicago, Okla., is visiting in Tulsa for a few days with his son, Harold V. Wall, vice president of Hudson hotel bank.

MR. H. F. WALL, of South Chicago, Okla., is visiting in Tulsa for a few days with his son, Harold V. Wall, vice president of Hudson hotel bank.

CHARLES CHERRY, a small child living with his parents at 1219 East First, was struck and injured by an automobile at Main and Third streets about 3 o'clock yesterday afternoon.

CHARLES CHERRY, a small child living with his parents at 1219 East First, was struck and injured by an automobile at Main and Third streets about 3 o'clock yesterday afternoon.

MARRIAGE licenses were issued to the following yesterday by the clerk of district court: Harry Wood, 23, and Hilda Harris, 22, Avenue 23, John N. Rogers, 24, Tulsa, and Victoria Tellman, Wichita, La. Texas, C. W. Watson, 21, and Pearl Long, 19, Bartlesville, J. W. McNeil, 21, and Jean, 19, Joplin, Mo. Tulsa, and Snow Jones, 18, Broken Arrow.

MARRIAGE licenses were issued to the following yesterday by the clerk of district court: Harry Wood, 23, and Hilda Harris, 22, Avenue 23, John N. Rogers, 24, Tulsa, and Victoria Tellman, Wichita, La. Texas, C. W. Watson, 21, and Pearl Long, 19, Bartlesville, J. W. McNeil, 21, and Jean, 19, Joplin, Mo. Tulsa, and Snow Jones, 18, Broken Arrow.

DECREES of divorce were granted in district and superior court that an additional court room would be a necessity.

Acting on the suggestion of the judges, the county commissioners will have the present district court room partitioned and an additional judge's chamber built. This work probably will be completed within two weeks after the contract is let and when completed the civil jury docket, composed of 200 trial cases, practically all contested, will begin before Judge Owen.

Acting on the suggestion of the judges, the county commissioners will have the present district court room partitioned and an additional judge's chamber built. This work probably will be completed within two weeks after the contract is let and when completed the civil jury docket, composed of 200 trial cases, practically all contested, will begin before Judge Owen.

Acting on the suggestion of the judges, the county commissioners will have the present district court room partitioned and an additional judge's chamber built. This work probably will be completed within two weeks after the contract is let and when completed the civil jury docket, composed of 200 trial cases, practically all contested, will begin before Judge Owen.

Acting on the suggestion of the judges, the county commissioners will have the present district court room partitioned and an additional judge's chamber built. This work probably will be completed within two weeks after the contract is let and when completed the civil jury docket, composed of 200 trial cases, practically all contested, will begin before Judge Owen.

Acting on the suggestion of the judges, the county commissioners will have the present district court room partitioned and an additional judge's chamber built. This work probably will be completed within two weeks after the contract is let and when completed the civil jury docket, composed of 200 trial cases, practically all contested, will begin before Judge Owen.

Acting on the suggestion of the judges, the county commissioners will have the present district court room partitioned and an additional judge's chamber built. This work probably will be completed within two weeks after the contract is let and when completed the civil jury docket, composed of 200 trial cases, practically all contested, will begin before Judge Owen.

Acting on the suggestion of the judges, the county commissioners will have the present district court room partitioned and an additional judge's chamber built. This work probably will be completed within two weeks after the contract is let and when completed the civil jury docket, composed of 200 trial cases, practically all contested, will begin before Judge Owen.

Acting on the suggestion of the judges, the county commissioners will have the present district court room partitioned and an additional judge's chamber built. This work probably will be completed within two weeks after the contract is let and when completed the civil jury docket, composed of 200 trial cases, practically all contested, will begin before Judge Owen.

Acting on the suggestion of the judges, the county commissioners will have the present district court room partitioned and an additional judge's chamber built. This work probably will be completed within two weeks after the contract is let and when completed the civil jury docket, composed of 200 trial cases, practically all contested, will begin before Judge Owen.

Acting on the suggestion of the judges, the county commissioners will have the present district court room partitioned and an additional judge's chamber built. This work probably will be completed within two weeks after the contract is let and when completed the civil jury docket, composed of 200 trial cases, practically all contested, will begin before Judge Owen.

Acting on the suggestion of the judges, the county commissioners will have the present district court room partitioned and an additional judge's chamber built. This work probably will be completed within two weeks after the contract is let and when completed the civil jury docket, composed of 200 trial cases, practically all contested, will begin before Judge Owen.

Acting on the suggestion of the judges, the county commissioners will have the present district court room partitioned and an additional judge's chamber built. This work probably will be completed within two weeks after the contract is let and when completed the civil jury docket, composed of 200 trial cases, practically all contested, will begin before Judge Owen.

Acting on the suggestion of the judges, the county commissioners will have the present district court room partitioned and an additional judge's chamber built. This work probably will be completed within two weeks after the contract is let and when completed the civil jury docket, composed of 200 trial cases, practically all contested, will begin before Judge Owen.

Acting on the suggestion of the judges, the county commissioners will have the present district court room partitioned and an additional judge's chamber built. This work probably will be completed within two weeks after the contract is let and when completed the civil jury docket, composed of 200 trial cases, practically all contested, will begin before Judge Owen.

Acting on the suggestion of the judges, the county commissioners will have the present district court room partitioned and an additional judge's chamber built. This work probably will be completed within two weeks after the contract is let and when completed the civil jury docket, composed of 200 trial cases, practically all contested, will begin before Judge Owen.

Acting on the suggestion of the judges, the county commissioners will have the present district court room partitioned and an additional judge's chamber built. This work probably will be completed within two weeks after the contract is let and when completed the civil jury docket, composed of 200 trial cases, practically all contested, will begin before Judge Owen.

Acting on the suggestion of the judges, the county commissioners will have the present district court room partitioned and an additional judge's chamber built. This work probably will be completed within two weeks after the contract is let and when completed the civil jury docket, composed of 200 trial cases, practically all contested, will begin before Judge Owen.

Acting on the suggestion of the judges, the county commissioners will have the present district court room partitioned and an additional judge's chamber built. This work probably will be completed within two weeks after the contract is let and when completed the civil jury docket, composed of 200 trial cases, practically all contested, will begin before Judge Owen.

Acting on the suggestion of the judges, the county commissioners will have the present district court room partitioned and an additional judge's chamber built. This work probably will be completed within two weeks after the contract is let and when completed the civil jury docket, composed of 200 trial cases, practically all contested, will begin before Judge Owen.

Acting on the suggestion of the judges, the county commissioners will have the present district court room partitioned and an additional judge's chamber built. This work probably will be completed within two weeks after the contract is let and when completed the civil jury docket, composed of 200 trial cases, practically all contested, will begin before Judge Owen.

Acting on the suggestion of the judges, the county commissioners will have the present district court room partitioned and an additional judge's chamber built. This work probably will be completed within two weeks after the contract is let and when completed the civil jury docket, composed of 200 trial cases, practically all contested, will begin before Judge Owen.

Acting on the suggestion of the judges, the county commissioners will have the present district court room partitioned and an additional judge's chamber built. This work probably will be completed within two weeks after the contract is let and when completed the civil jury docket, composed of 200 trial cases, practically all contested, will begin before Judge Owen.

Acting on the suggestion of the judges, the county commissioners will have the present district court room partitioned and an additional judge's chamber built. This work probably will be completed within two weeks after the contract is let and when completed the civil jury docket, composed of 200 trial cases, practically all contested, will begin before Judge Owen.

Acting on the suggestion of the judges, the county commissioners will have the present district court room partitioned and an additional judge's chamber built. This work probably will be completed within two weeks after the contract is let and when completed the civil jury docket, composed of 200 trial cases, practically all contested, will begin before Judge Owen.

Acting on the suggestion of the judges, the county commissioners will have the present district court room partitioned and an additional judge's chamber built. This work probably will be completed within two weeks after the contract is let and when completed the civil jury docket, composed of 200 trial cases, practically all contested, will begin before Judge Owen.

Acting on the suggestion of the judges, the county commissioners will have the present district court room partitioned and an additional judge's chamber built. This work probably will be completed within two weeks after the contract is let and when completed the civil jury docket, composed of 200 trial cases, practically all contested, will begin before Judge Owen.

Acting on the suggestion of the judges, the county commissioners will have the present district court room partitioned and an additional judge's chamber built. This work probably will be completed within two weeks after the contract is let and when completed the civil jury docket, composed of 200 trial cases, practically all contested, will begin before Judge Owen.

Acting on the suggestion of the judges, the county commissioners will have the present district court room partitioned and an additional judge's chamber built. This work probably will be completed within two weeks after the contract is let and when completed the civil jury docket, composed of 200 trial cases, practically all contested, will begin before Judge Owen.

Acting on the suggestion of the judges, the county commissioners will have the present district court room partitioned and an additional judge's chamber built. This work probably will be completed within two weeks after the contract is let and when completed the civil jury docket, composed of 200 trial cases, practically all contested, will begin before Judge Owen.

Acting on the suggestion of the judges, the county commissioners will have the present district court room partitioned and an additional judge's chamber built. This work probably will be completed within two weeks after the contract is let and when completed the civil jury docket, composed of 200 trial cases, practically all contested, will begin before Judge Owen.

Acting on the suggestion of the judges, the county commissioners will have the present district court room partitioned and an additional judge's chamber built. This work probably will be completed within two weeks after the contract is let and when completed the civil jury docket, composed of 200 trial cases, practically all contested, will begin before Judge Owen.

Acting on the suggestion of the judges, the county commissioners will have the present district court room partitioned and an additional judge's chamber built. This work probably will be completed within two weeks after the contract is let and when completed the civil jury docket, composed of 200 trial cases, practically all contested, will begin before Judge Owen.

CLOSE CONFINEMENT FOR JAIL BREAKERS

Sheriff Thinks Revolver Was Passed Through Window From Ground to Berry and Marsh.

Identity of the person responsible for smuggling into the county jail the revolver used by Jack Berry and J. C. Marsh in their attempt at jail delivery Friday night, has not been established, but the means used in procuring the weapon is known to the sheriff. This night last week a watchman for the Park-Washington company saw a man standing north of the south-house directly under the windows of the jail. Sheriff Wootley believes that the person had a revolver on the end of a piece of string and let down the weapon was then drawn up into the jail.

Mr. Wootley believes that the person had a revolver on the end of a piece of string and let down the weapon was then drawn up into the jail. Mr. Wootley believes that the person had a revolver on the end of a piece of string and let down the weapon was then drawn up into the jail.

Mr. Wootley believes that the person had a revolver on the end of a piece of string and let down the weapon was then drawn up into the jail. Mr. Wootley believes that the person had a revolver on the end of a piece of string and let down the weapon was then drawn up into the jail.

Mr. Wootley believes that the person had a revolver on the end of a piece of string and let down the weapon was then drawn up into the jail. Mr. Wootley believes that the person had a revolver on the end of a piece of string and let down the weapon was then drawn up into the jail.

Mr. Wootley believes that the person had a revolver on the end of a piece of string and let down the weapon was then drawn up into the jail. Mr. Wootley believes that the person had a revolver on the end of a piece of string and let down the weapon was then drawn up into the jail.

Mr. Wootley believes that the person had a revolver on the end of a piece of string and let down the weapon was then drawn up into the jail. Mr. Wootley believes that the person had a revolver on the end of a piece of string and let down the weapon was then drawn up into the jail.

Mr. Wootley believes that the person had a revolver on the end of a piece of string and let down the weapon was then drawn up into the jail. Mr. Wootley believes that the person had a revolver on the end of a piece of string and let down the weapon was then drawn up into the jail.

Mr. Wootley believes that the person had a revolver on the end of a piece of string and let down the weapon was then drawn up into the jail. Mr. Wootley believes that the person had a revolver on the end of a piece of string and let down the weapon was then drawn up into the jail.

Mr. Wootley believes that the person had a revolver on the end of a piece of string and let down the weapon was then drawn up into the jail. Mr. Wootley believes that the person had a revolver on the end of a piece of string and let down the weapon was then drawn up into the jail.

Mr. Wootley believes that the person had a revolver on the end of a piece of string and let down the weapon was then drawn up into the jail. Mr. Wootley believes that the person had a revolver on the end of a piece of string and let down the weapon was then drawn up into the jail.

Mr. Wootley believes that the person had a revolver on the end of a piece of string and let down the weapon was then drawn up into the jail. Mr. Wootley believes that the person had a revolver on the end of a piece of string and let down the weapon was then drawn up into the jail.

Mr. Wootley believes that the person had a revolver on the end of a piece of string and let down the weapon was then drawn up into the jail. Mr. Wootley believes that the person had a revolver on the end of a piece of string and let down the weapon was then drawn up into the jail.

WHITTIER SCHOOL HAS IMPROVED SEATING PLAN

Whittier school at Lewis and Barton has inaugurated an improved seating plan whereby pupils who have poor eyesight and who do not have normal hearing will be less handicapped.

In the various rooms seats which vary in size are arranged so that the pupils may be comfortable while at the desks. The children with poor eyesight and defective hearing are seated in the front of the room. Two children from this school have been assigned to the central grade school for instruction in lip reading owing to their inability to hear during the class recitation. Mrs. Albert, principal, reports that she has a large class of pupils who are deaf to some degree necessary to teach them the lip reading system.

Mr. Johnson, principal, reports that she has a large class of pupils who are deaf to some degree necessary to teach them the lip reading system. Mr. Johnson, principal, reports that she has a large class of pupils who are deaf to some degree necessary to teach them the lip reading system.

Mr. Johnson, principal, reports that she has a large class of pupils who are deaf to some degree necessary to teach them the lip reading system. Mr. Johnson, principal, reports that she has a large class of pupils who are deaf to some degree necessary to teach them the lip reading system.

Mr. Johnson, principal, reports that she has a large class of pupils who are deaf to some degree necessary to teach them the lip reading system. Mr. Johnson, principal, reports that she has a large class of pupils who are deaf to some degree necessary to teach them the lip reading system.

Mr. Johnson, principal, reports that she has a large class of pupils who are deaf to some degree necessary to teach them the lip reading system. Mr. Johnson, principal, reports that she has a large class of pupils who are deaf to some degree necessary to teach them the lip reading system.

Mr. Johnson, principal, reports that she has a large class of pupils who are deaf to some degree necessary to teach them the lip reading system. Mr. Johnson, principal, reports that she has a large class of pupils who are deaf to some degree necessary to teach them the lip reading system.

Mr. Johnson, principal, reports that she has a large class of pupils who are deaf to some degree necessary to teach them the lip reading system. Mr. Johnson, principal, reports that she has a large class of pupils who are deaf to some degree necessary to teach them the lip reading system.

Mr. Johnson, principal, reports that she has a large class of pupils who are deaf to some degree necessary to teach them the lip reading system. Mr. Johnson, principal, reports that she has a large class of pupils who are deaf to some degree necessary to teach them the lip reading system.

Mr. Johnson, principal, reports that she has a large class of pupils who are deaf to some degree necessary to teach them the lip reading system. Mr. Johnson, principal, reports that she has a large class of pupils who are deaf to some degree necessary to teach them the lip reading system.

Mr. Johnson, principal, reports that she has a large class of pupils who are deaf to some degree necessary to teach them the lip reading system. Mr. Johnson, principal, reports that she has a large class of pupils who are deaf to some degree necessary to teach them the lip reading system.

Mr. Johnson, principal, reports that she has a large class of pupils who are deaf to some degree necessary to teach them the lip reading system. Mr. Johnson, principal, reports that she has a large class of pupils who are deaf to some degree necessary to teach them the lip reading system.

Mr. Johnson, principal, reports that she has a large class of pupils who are deaf to some degree necessary to teach them the lip reading system. Mr. Johnson, principal, reports that she has a large class of pupils who are deaf to some degree necessary to teach them the lip reading system.

NEAR RIOT RESULTS FROM BIG SHOE SALE

Police, Firemen and Ambulances Called Upon—Four Casualties Reported.

Two thousand women waited two hours for the opening of Johnson Brothers shoe store yesterday morning when it was advertised that 100 pairs of shoes would be given away to the first hundred women that could wear them out of the store.

Three policemen, one fire chief and a night watchman were required to keep the crowd from becoming a riot. An ambulance was called to the intersection with the Erieo railroad near their property.

Directors of the chamber of commerce at their luncheon meeting Friday passed a resolution which will be presented to Frisco officials asking the opening of the crossing in order to provide the automobile factory with an outlet to the plant.

A Noble Love. Mrs. M. J. "But, my dear, are you sure he was not thinking of your money when he proposed to you last night?" "Quite sure!" He said only last night he never thought of that, he simply knew I had it, and that was all he cared for.

A Noble Love. Mrs. M. J. "But, my dear, are you sure he was not thinking of your money when he proposed to you last night?" "Quite sure!" He said only last night he never thought of that, he simply knew I had it, and that was all he cared for.

A Noble Love. Mrs. M. J. "But, my dear, are you sure he was not thinking of your money when he proposed to you last night?" "Quite sure!" He said only last night he never thought of that, he simply knew I had it, and that was all he cared for.

A Noble Love. Mrs. M. J. "But, my dear, are you sure he was not thinking of your money when he proposed to you last night?" "Quite sure!" He said only last night he never thought of that, he simply knew I had it, and that was all he cared for.

A Noble Love. Mrs. M. J. "But, my dear, are you sure he was not thinking of your money when he proposed to you last night?" "Quite sure!" He said only last night he never thought of that, he simply knew I had it, and that was all he cared for.

A Noble Love. Mrs. M. J. "But, my dear, are you sure he was not thinking of your money when he proposed to you last night?" "Quite sure!" He said only last night he never thought of that, he simply knew I had it, and that was all he cared for.

A Noble Love. Mrs. M. J. "But, my dear, are you sure he was not thinking of your money when he proposed to you last night?" "Quite sure!" He said only last night he never thought of that, he simply knew I had it, and that was all he cared for.

A Noble Love. Mrs. M. J. "But, my dear, are you sure he was not thinking of your money when he proposed to you last night?" "Quite sure!" He said only last night he never thought of that, he simply knew I had it, and that was all he cared for.

A Noble Love. Mrs. M. J. "But, my dear, are you sure he was not thinking of your money when he proposed to you last night?" "Quite sure!" He said only last night he never thought of that, he simply knew I had it, and that was all he cared for.

CENT A MILE RATE TO VETS REUNION

Special Offer Made by Railroads to Confederate Soldiers or Families to Atlanta.

Railroads have established a rate of one cent a mile for transportation to the confederate veteran reunion at Atlanta, October 7 to 10. This fare is obtainable only by veterans, sons of veterans and their families, and in order to obtain tickets it will be necessary to obtain a certificate from officers of these organizations.

Persons who are eligible but who have no camp in their home town may join the Tulsa organization by making application to Tate Hotel and paying a membership fee of one dollar.

Cars will be placed at Oklahoma City, Muskogee, Ardmore and other convenient points and will be coupled to a special train leaving Tulsa Monday evening, October 5. This train will consist of standard pullman, tourist and chair cars. The round trip rates are: Ardmore, \$12.12; Bartlesville, \$18.88; Chickasha, \$19.36; Claremore, \$17.64; Muskogee, \$17.14 and Tulsa \$18.14.

The train will be routed to Memphis, Chattanooga, Chickasha and over the Battlefield route to Atlanta.

The train will be routed to Memphis, Chattanooga, Chickasha and over the Battlefield route to Atlanta.

The train will be routed to Memphis, Chattanooga, Chickasha and over the Battlefield route to Atlanta.

The train will be routed to Memphis, Chattanooga, Chickasha and over the Battlefield route to Atlanta.

The train will be routed to Memphis, Chattanooga, Chickasha and over the Battlefield route to Atlanta.

The train will be routed to Memphis, Chattanooga, Chickasha and over the Battlefield route to Atlanta.

The train will be routed to Memphis, Chattanooga, Chickasha and over the Battlefield route to Atlanta.

The train will be routed to Memphis, Chattanooga, Chickasha and over the Battlefield route to Atlanta.

The train will be routed to Memphis, Chattanooga, Chickasha and over the Battlefield route to Atlanta.

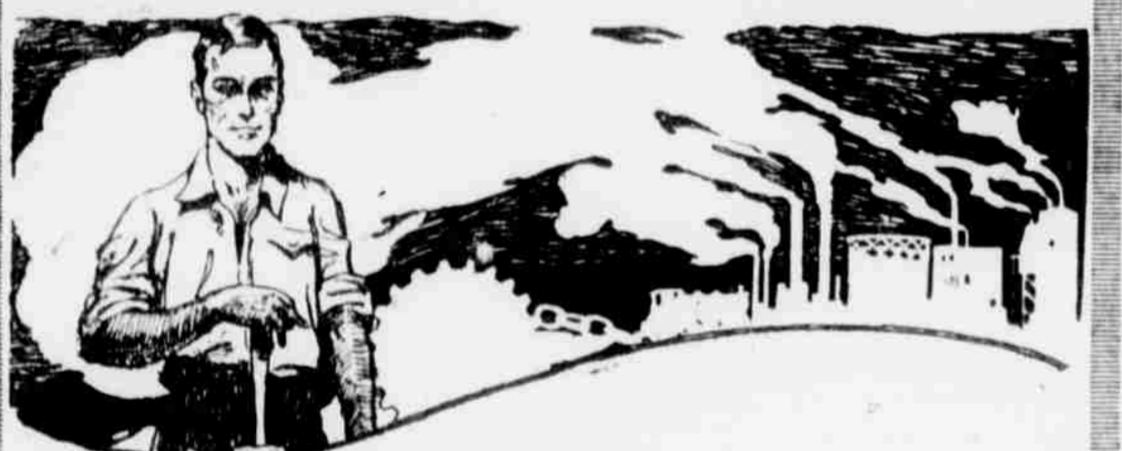
"I CAN'T SAVE A CENT" You hear this now and then. Some of the folks who read the Exchange National appeals for savers, don't believe they can save.

HOW DOES GEORGE YETTER SAVE MONEY? He is a day laborer in the City Park Department. He draws wages in amounts equal to other men in his capacity. He maintains a household.

Yet George Yetter saves regularly more than \$300.00 each year. He don't earn near as much as some folks who say they CAN'T save a cent.

He has the HABIT of THRIFT and they don't. That's the difference. Suppose you teach yourself THRIFT by starting a savings account and SAVE a small sum REGULARLY.

The Exchange National of Tulsa "Oklahoma's Largest Bank"



"Delivering the Goods"

You employ the telephone to carry your messages and bring you the replies. You want action from your telephone; prompt, accurate, courteous action. You must therefore pay the telephone fair wages.

Only when you pay the telephone its fair wages can it pay the workers their fair wages.

The Southwestern Bell is acting as your agent. You employ the telephone company to do certain things for you. Because the company as a whole is made up of men, girls and equipment, then it evident that you must pay these men, girls and equipment for their work.

If your Telephone Company is to "Deliver the Goods" to your greatest satisfaction it must have good employees, and—

Good employees must be paid fair wages.

Southwestern Bell Telephone Co.