

A. & M. EDUCATOR IS CALLED BY DEATH

A. A. Marony, Professor of History at A. & M. College, Has Heart Failure in Class Room.

NOTED STATE HISTORIAN

Formerly a Professor at Phillips University He Was Well Known and Liked All Over State.

Special to The World. STILLWATER, Sept. 29.—A. A. Marony, professor of history and principal of the secondary school at Oklahoma A. & M. college, died suddenly Monday morning from an attack of heart trouble. He became ill while in his class room and was carried to his home, where he died within a few minutes.

charge of his burial. Arrangements for his funeral have not been made pending communications with several brothers and sisters who live in widely separated parts of the United States. He leaves besides his brothers and sisters, a wife, son, daughter and niece, all of whom live in Stillwater. No classes will be held at the college Tuesday.

Cherokee Show Farm Products. TABLEQUAH, Sept. 29.—One of the finest exhibits at the fair at Muskogee will be that of the Cherokee Indian farmers of this section. Included in the exhibit are corn, wheat, oats, potatoes, fruit and a variety of other products of farm and garden. Hon. J. H. P. Jones, of the United States field clerk's office here is in charge of the exhibit. Some of the most productive farms are owned by full-blooded Cherokees and a number of them are among the successful farmers of Cherokee county.

A new African diamond field has been discovered in the gold coast by experts of the British geological survey.

Professor Marony came to A. & M. college in 1910 and was one of the oldest members of the faculty in point of service. He came here from Phillips university at Esd, at that time called Oklahoma Christian university, and was considered one of the highest authorities in the state on the subject of Oklahoma history. For four years he had been chairman of the college committee on student government, better known as the "blue committee." He was well known throughout the state as a Masonic orator, being a Knight Templar. The local Masonic lodge will be in

LODGES AND SOCIETIES

TULSA LODGE No. 71 meets every Tuesday. Next meeting October 1. Visitors welcome. Masonic hall. DELTA LODGE J. C. MONFORT, Secy.

LODGES AND SOCIETIES

PETROLEUM LODGE No. 1 meets every Tuesday. Next meeting October 1. Visitors welcome. Masonic hall. TULSA CHAPTER No. 52 M. A. M. meets every Tuesday. Next meeting October 1. Visitors welcome. Masonic hall. TRINITY COMMANDERY No. 25 meets every Tuesday. Next meeting October 1. Visitors welcome. Masonic hall. ARDAR TEMPLE A. A. O. N. M. S. meets every Tuesday. Next meeting October 1. Visitors welcome. Masonic hall. AFRONA LODGE No. 46 T. O. F. meets every Tuesday. Next meeting October 1. Visitors welcome. Masonic hall. NEW STATE CAMP No. 426 W. O. W. meets every Tuesday. Next meeting October 1. Visitors welcome. Masonic hall. TULSA CAMP No. 426 W. O. W. meets every Tuesday. Next meeting October 1. Visitors welcome. Masonic hall. TULSA COUNCIL No. 104 K. O. F. meets every Tuesday. Next meeting October 1. Visitors welcome. Masonic hall.

WANT ADS

RATES AND INFORMATION. This is the best place for advertising. Rates per word for twenty insertions. Single insertions 12 words. Classified advertising rates for one year.

ANNOUNCEMENTS

SPECIAL NOTICES. MARRIAGE AND DIVORCE. WANTED. ANNOUNCEMENTS. BOARD AND ROOMS. BUSINESS SERVICE. EMPLOYMENT.

ANNOUNCEMENTS

ANNOUNCEMENTS. BOARD AND ROOMS. BUSINESS SERVICE. EMPLOYMENT.

ANNOUNCEMENTS

ANNOUNCEMENTS. BOARD AND ROOMS. BUSINESS SERVICE. EMPLOYMENT.

ANNOUNCEMENTS

ANNOUNCEMENTS. BOARD AND ROOMS. BUSINESS SERVICE. EMPLOYMENT.

THE YELLOW CHASSIS TRUCKS THAT SERVE SO WELL

Announcing the policy of the Robertson Motor Company regarding the handling of REPUBLIC TRUCKS in the State of Oklahoma.



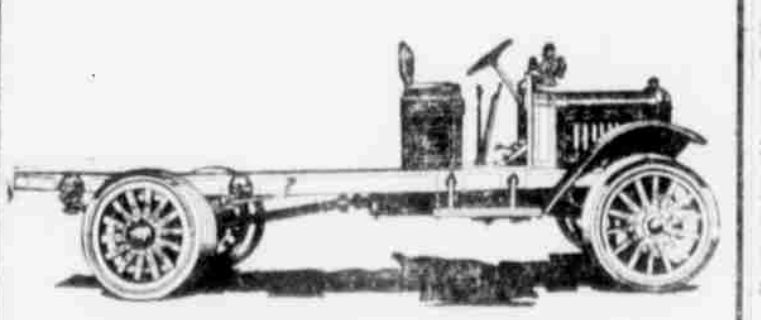
A complete line of new model Trucks. These are coming through with many changes that will interest old REPUBLIC TRUCK owners as well as withstanding competition of other truck builders. All motors are CONTINENTAL RED SEAL. The REPUBLIC factory is able to give MORE truck for LESS money. They are the largest builders of motor trucks in the world.

A service station with skilled REPUBLIC TRUCK mechanics. This company believes in the old adage, "Honesty is the best policy," and emphasizes the fact in the handling of repairs and replacements. All work done by us is GUARANTEED.

PARTS

We are now carrying as near a complete line of parts as it is possible to get. The new factory price lists have arrived which show a great reduction in many items. We have an exceptionally large stock of parts for Continental and Buick motors.

We are Building a Reputation for Square Dealing



ROBERTSON MOTOR CO. 13 E. Seventh Tulsa

LEGAL. PUBLIC AUCTION TO THE HIGHEST BIDDER. THE VEH. MOTOR COMPANY. THE VEH. MOTOR COMPANY. THE VEH. MOTOR COMPANY.

LEGAL. PUBLIC AUCTION TO THE HIGHEST BIDDER. THE VEH. MOTOR COMPANY. THE VEH. MOTOR COMPANY. THE VEH. MOTOR COMPANY.

LEGAL. PUBLIC AUCTION TO THE HIGHEST BIDDER. THE VEH. MOTOR COMPANY. THE VEH. MOTOR COMPANY. THE VEH. MOTOR COMPANY.

LEGAL. PUBLIC AUCTION TO THE HIGHEST BIDDER. THE VEH. MOTOR COMPANY. THE VEH. MOTOR COMPANY. THE VEH. MOTOR COMPANY.

LEGAL. PUBLIC AUCTION TO THE HIGHEST BIDDER. THE VEH. MOTOR COMPANY. THE VEH. MOTOR COMPANY. THE VEH. MOTOR COMPANY.

USED CAR VALUES. Chevrolet five-passenger touring \$400. National chummy, 1917 model \$800. Marmon touring, 1916 model \$2,500. Marmon touring, 1919 model \$3,250. Marmon chummy, 1918 model \$3,250. Marmon chummy, 1918 model \$3,500.

USED CAR VALUES. Chevrolet five-passenger touring \$400. National chummy, 1917 model \$800. Marmon touring, 1916 model \$2,500. Marmon touring, 1919 model \$3,250. Marmon chummy, 1918 model \$3,250. Marmon chummy, 1918 model \$3,500.

USED CAR VALUES. Chevrolet five-passenger touring \$400. National chummy, 1917 model \$800. Marmon touring, 1916 model \$2,500. Marmon touring, 1919 model \$3,250. Marmon chummy, 1918 model \$3,250. Marmon chummy, 1918 model \$3,500.

USED CAR VALUES. Chevrolet five-passenger touring \$400. National chummy, 1917 model \$800. Marmon touring, 1916 model \$2,500. Marmon touring, 1919 model \$3,250. Marmon chummy, 1918 model \$3,250. Marmon chummy, 1918 model \$3,500.

USED CAR VALUES. Chevrolet five-passenger touring \$400. National chummy, 1917 model \$800. Marmon touring, 1916 model \$2,500. Marmon touring, 1919 model \$3,250. Marmon chummy, 1918 model \$3,250. Marmon chummy, 1918 model \$3,500.

USED CAR VALUES. Chevrolet five-passenger touring \$400. National chummy, 1917 model \$800. Marmon touring, 1916 model \$2,500. Marmon touring, 1919 model \$3,250. Marmon chummy, 1918 model \$3,250. Marmon chummy, 1918 model \$3,500.

USED CAR VALUES. Chevrolet five-passenger touring \$400. National chummy, 1917 model \$800. Marmon touring, 1916 model \$2,500. Marmon touring, 1919 model \$3,250. Marmon chummy, 1918 model \$3,250. Marmon chummy, 1918 model \$3,500.