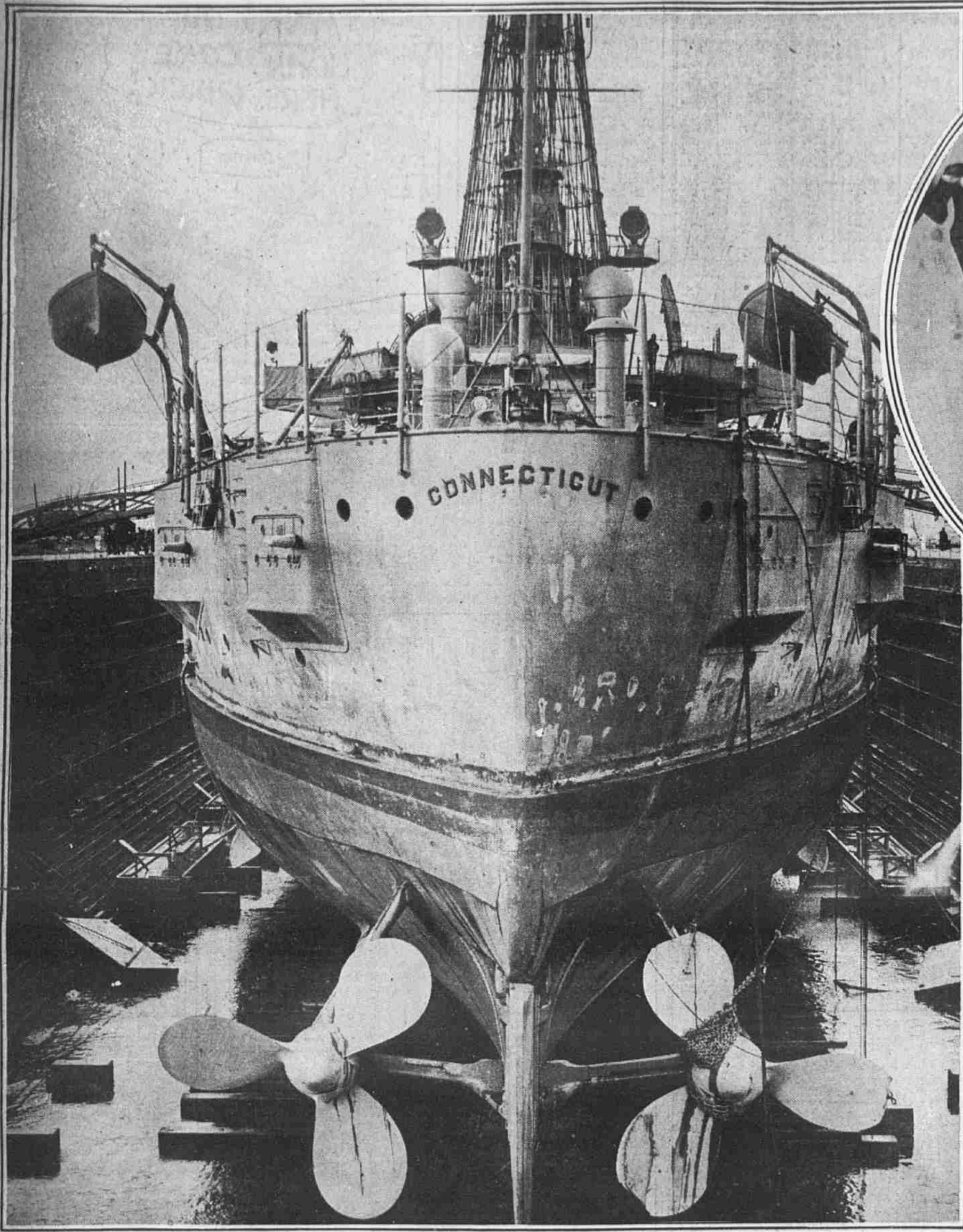




Evening ILLUSTRATED Ledger

SATURDAY
April 3, 1915

WARSHIPS, PERSONS AND SCENES FIGURING IN THE DAY'S NEWS OF A WORLD'S DOINGS DAY BY DAY



BATTLESHIP CONNECTICUT IN DRYDOCK AT LEAGUE ISLAND

The picture shows the chain around the broken right propeller of the big warcraft which forced her to seek the drydock at the navy yard here for repairs, which may keep her out of service for several weeks.



RUBY HALE WHITE

Photo by Reily & Way.

Dancer who will take part in the Greek Bacchanale which is to be part of the colorful "Masque of Primitive Peoples" in Horticultural Hall next Tuesday evening.



LADY LONDONDERRY AS A COLONEL

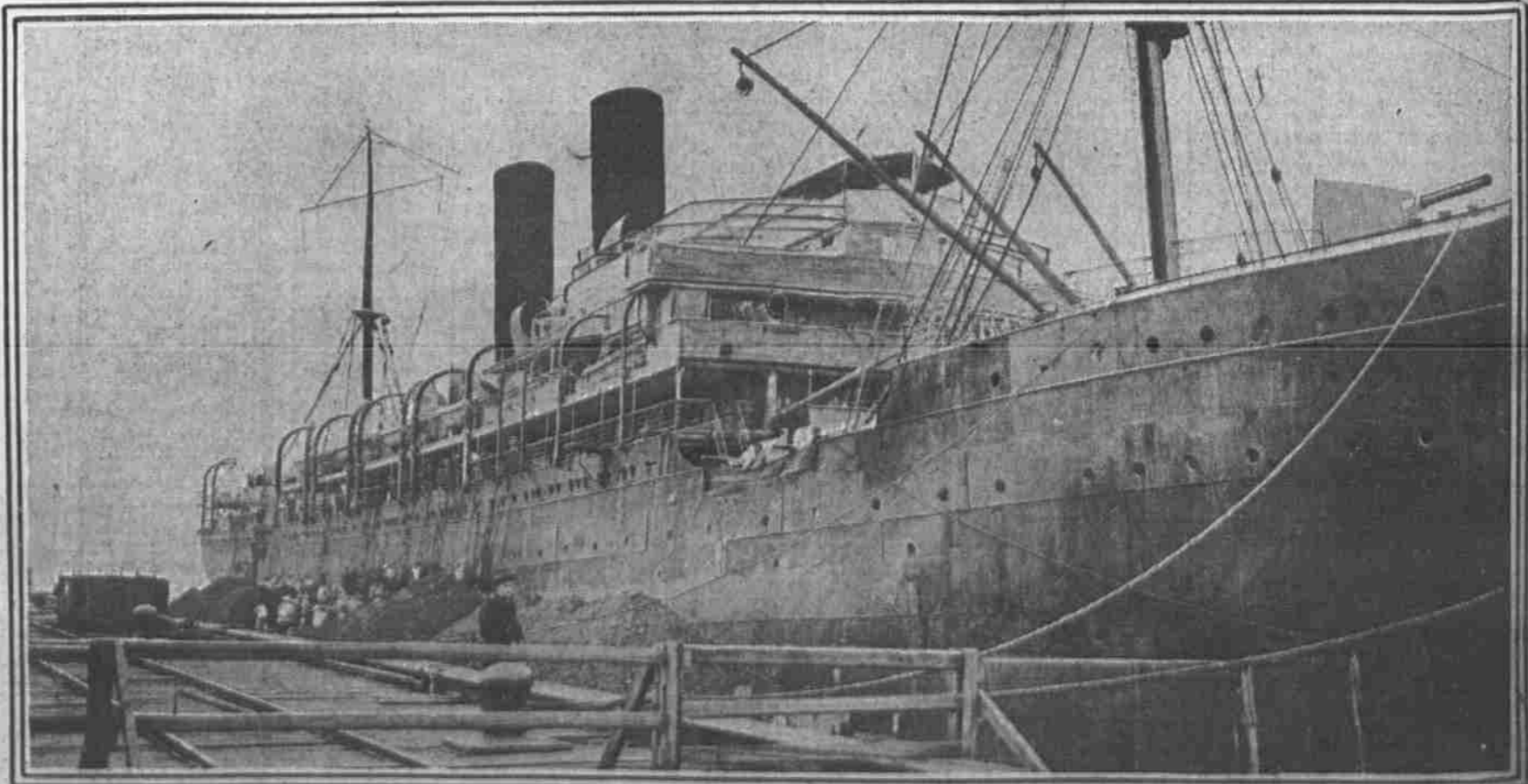
Photo by Underwood & Underwood.

England is organizing women's volunteer reserves. The women are taught signaling, dispatch riding, telegraphing, motoring and camp cooking. It has been explained that the corps is for use only in the event of an invasion of England. Four companies have been formed, with Lady Londonderry as colonel.



AT THE MARINE CORPS REVIEW AT LEAGUE ISLAND

From left to right, the three figures in front are Colonel Long, Commandant W. S. Benson, of the Navy Yard, and Colonel Waller, saluting the passing ranks of marines at the latest drill of the navy's "soldiers and sailors too."



VISITORS BARRED FROM GERMAN CRUISER PRINZ EITEL

This is one of the last pictures taken of the sea rover whose arrival at Newport News was such a sensation. Photographers have since been banned and a fence, guarded by a sentry, keeps all curious persons at a distance.