

**SOCIAL AND PERSONAL.**

Mr. T. R. Webb of Greenwood was in the city Monday.

Mr. M. A. Sumner was in the city Friday from the county.

Mr. T. S. Langston of Madden was in the city Monday afternoon.

Mrs. H. I. Manly of Webb City, Mo., arrived in the city Tuesday and is visiting her sister, Mrs. R. E. Babb.

Mrs. M. A. Leaman of Cross Hill was in the city on Tuesday.

Mr. W. H. Gilkerson, Jr., went to Spartanburg this week; he, the "well known excursionist", is arranging for a big excursion to Spartanburg on the 25th instant, the occasion of the C. C. & O. railway opening in that city.

One of the most delightful meetings of the Mysterious Twenty-two club was on Tuesday afternoon when the members were charmingly entertained by Miss Kate Wright at her home on Chestnut street. Miss Wright was assisted in receiving by Miss Nell Miller. After a number of games of bridge, a salad course was served.

The Junior Aid society of the Methodist church was hospitably entertained at the home of Mr. and Mrs. W. H. Gilkerson on Tuesday evening of this week at a silver tea. The members all contributed a silver coin, the sum realized being devoted to the work of the society. Delightful refreshments were served and a most pleasant evening spent. Miss Gilkerson, president of the society proved herself a most charming hostess.

Mrs. J. C. Garlington and daughter, Miss Edna, are visiting relatives in the city.

Misses Ethel and Maud Sharp of Princeton were shopping in the city Monday.

Messrs. J. J. Denny and S. E. Boney leave today for Georgetown to attend the Bigham-Avant trial, which will begin tomorrow morning.

Mr. Thomas Downey, whose illness has been noted in The Advertiser, has had a change for the better and is steadily improving this week.

Mr. M. L. Motes, of the firm of Motes & Brownlee, Watts Mills, has purchased a nice lot on North Harper street and is preparing to build thereon, the Messrs. Brownlee Bros. having the contract.

Mr. and Mrs. Downs A. Glenn of the county were in the city yesterday shopping.

Messrs. W. T. Austin and M. T. Simpson of Cross Hill were in town yesterday.

Miss Maggie Clardy who has passed through a long siege of illness, is convalescing.

Mr. A. M. Hill of Cross Hill was in town Monday.

Rev. C. E. Rankin and Mr. J. Wells Todd leave Thursday for Charleston to attend the South Carolina Synod. In consequence of the pastor's absence there will be no services at the Presbyterian church next Sunday.

"Father sent me over to borrow your paper; he only wants to read it." "Tell him I'm coming over to borrow his breakfast; I only want to eat it."

Cows that are allowed to go dry too long never attain their best.

**Big Advance In Flour of 30c per bbl.**

We have only one more car of cheap flour. We will make this week only.

- Majestic Best Patent Flour \$6.20
- White Swan Best Pat. Flour 6.00
- Florena Half Patent Flour 5.50
- Corn 97 1/2c
- Meal 97c
- Bran 1.20
- Salt 55c

We are expecting 1000 bushels of Texas Rust Proof Oats, while they last we will sell at 65c per bushel.

Don't forget to see us about your Bagging and Ties.

**Laurens Wholesale Grocery Co.**

**We Ask You** to take Cardui, for your female troubles, because we are sure it will help you. Remember that this great female remedy—

**WINE OF CARDUI**

has brought relief to thousands of other sick women, so why not to you? For headache, backache, periodical pains, female weakness, many have said it is "the best medicine to take." Try it!

**Sold in This City**

**THE ROMANCE OF WHEAT.**

Once Raised For Princes Only, Now the World's Food.

Wheat is the food of princes and peasants. It is the food of the world. It was known to be the best food for fifty centuries, but it did not until thirty or forty years ago become universal. Every community ate all it raised. There was none to sell. It was so precious that only kings and the nobilities could afford it. It was sowed by peasants, who reaped it with a sickle by hand. For 5,000 years no better plan was conceived than the sickle and the scythe. Then came the reaper, an invention by Cyrus H. McCormick, of Scotch-Irish descent. Then the world began eating white bread.

This new machine, the reaper, when it was full grown into the self binder was equal to forty sickles. With one man to drive it, it could cut and bind enough wheat in one season to feed 400 persons. In its most highly developed form, the combined harvester and thrasher, it has become so gigantic a machine that thirty-two horses are required to haul it.

This leviathan cuts a fifty foot roadway through the grain, thrashes it and bags it at the rate of one bag every half minute. And the total world production of reapers of every sort—self binders, mowers, headers, corn binders, etc.—is probably as many as 1,500,000 a year, two-thirds of them being made in the United States.

Because of this harvesting machinery the wheat crop of the world is now nearly twice what it was in 1870. The American crop has multiplied six and a half times in fifty years. Western Canada, Australia, Siberia and Argentina have become wheat producers.

The cost of growing one bushel in America with machinery and high wages is now about half a dollar, which is less than the cost in Europe and as low as the cost in India, where laborers can be hired for a few pennies a day. With a sickle the time cost of a bushel of wheat was three hours. With a self binder it is now ten minutes.

Then came the steamboat and the railroad that carried the grain. At the outset it was shipped in bags. Then some railway genius invented the grain car, which holds as much as twenty or twenty-five wagon loads, and today one of the ordinary moving pictures of an American railroad is a sixty car train traveling eastward with enough wheat in its rolling bins to give bread to a city of 10,000 people for a year.

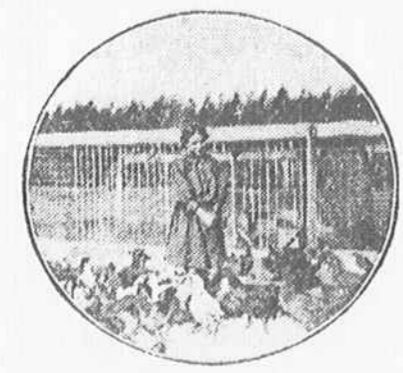
The Siberian railway, which is the longest straight line of steel in the world, was built largely as a wheat conveyor. So were the railways of western Canada, Argentina and India.

It is cheaper to carry wheat from one country to another than from the barn to the nearest town. The average distance that an American farmer has to haul his grain is nine and a half miles, and the average cost of haulage is 9 cents for a hundred pounds. Thus it has actually become true that to carry wheat ten miles by wagon costs more than 2,300 miles by steamship. Such is the tense efficiency of our wheat carrier system that a bushel of grain can now be picked up in Missouri and sent to the cotton spinners of England for a dime.

**First Feeding of Chicks.**

Don't feed raw dough or rough mash to young chicks such as you feed larger chicks. Raw dough sours in the crop and brings on all sorts of bowel troubles. If you want to feed this stuff cook it well beforehand. Well menus through and through, not just a hard crust on the outside and the middle a soggy, wet mash. This is as bad as feeding it raw.

Chicks will do well for awhile on a grain ration alone, but they will do better if fed a little meat from the first. If the grain ration is dry and sweet chicks can be fed a little green



BREAKFAST IN THE POULTRY YARD.

cut home from the very first. Just a little thrown in so that each chick can get a morsel or two will help wonderfully. If you ever dropped a bit of meat into a brooder full of two-week-old chicks and saw them scramble and fight over it you won't doubt that they needed it.

Cooked meat cut up very fine is safer and perhaps just as good, but it is costly. However, cost should be little considered in feeding chicks for the first few weeks, as a foundation can be then secured well worth many times its cost. Feed your poultry regularly. They will come to know you and wait for you and are all the better for it. The illustration will give you an idea.

**Winter Radishes.** Try some winter radishes. They are easily grown and will be greatly enjoyed when fresh vegetables from the garden cannot be had every day. The soil should be deep, fine and rich and well supplied with moisture. Either red or white varieties may be secured from all seedsmen.

**SOUTHERN RAILWAY COMPANY.**

(Schedule Effective June 20, 1909.)

N. B.—These schedule figures show the time that trains may be expected to arrive and depart but the times shown are not guaranteed.

**East and West bound trains from Spartanburg, S. C.**

7:30 A. M.—No. 36, daily, for Charlotte, Washington, Richmond, New York and intermediate points. Arrive Charlotte 10:05 A. M. Richmond 9:30 P. M., Washington 10:55 P. M., New York 6:30 A. M.

9:50 A. M.—No. 42, daily except Sunday, for Charlotte and intermediate points. Arrive Charlotte 12:45 P. M.

1:45 P. M.—No. 12, daily local, for Richmond and intermediate points. Arrive Richmond 7:00 A. M.

3:20 P. M.—No. 28, daily. ("New York-Atlanta-New Orleans Limited") for Washington, New York and the East. Arrive Washington 6:50 A. M., New York 1:00 P. M. Pullman cars, dining cars.

8:10 P. M.—No. 40, daily, for Charlotte and intermediate points.

9:00 P. M.—No. 30, daily, for Washington and New York. Pullman cars, dining cars. Arrive Washington 10:40 A. M., New York 5:00 P. M.

10:30 A. M.—No. 9, daily, for Asheville and intermediate points. Arrive Asheville 2:10 P. M.

5:25 P. M.—No. 13, daily, for Asheville and intermediate points. Arrive Asheville 9:15 P. M. Parlor-car car. West bound trains from Greenville, S. C.

6:50 A. M.—No. 29, daily, for Atlanta and Birmingham. Pullman cars, dining cars. Arrive Atlanta 10:30 A. M., arrive Birmingham 4:00 P. M.

11:35 A. M.—No. 29, daily, for Atlanta and intermediate points, connecting at Atlanta for all points west. Arrive Atlanta 3:55 P. M.

1:30 P. M.—No. 37, daily. ("New York-Atlanta-New Orleans Limited") for Atlanta and New Orleans. Arrive Atlanta 5:00 N. M., New Orleans 7:55 P. M. Pullman sleeping car, club car, observation car and dining car.

2:35 P. M.—No. 14, daily local, for Atlanta and way stations. Arrive Atlanta 8:30 P. M.

1:10 A. M.—No. 25, daily, solid train to New Orleans with pullman cars and dining car. Arrive Atlanta 5:00 A. M., New Orleans 8:20 P. M. Southbound from Columbia.

6:55 A. M.—No. 29, daily, for Savannah and Jacksonville. Pullman cars.

7:55 A. M.—No. 12, daily, for Charleston and intermediate points.

3:50 P. M.—No. 11, daily, for Charleston and way stations.

2:15 A. M.—No. 16, daily, for Charleston. Pullman car. Summer excursion tickets now on sale.

For further information, call on ticket agents Southern railway, or J. L. Meek, A. G. P. P. A., Atlanta, Ga. C. H. Eckert, V. P. & G. M., Washington, D. C. W. E. McGee, T. P. A., Augusta, Ga. H. F. Cary, G. P. A., Washington, D. C.



From cutting to finishing

**LA VOGUE**

**QUALITY**

Is Unequaled

And that's just why we sell them.

We want you to be satisfied with the suits and coats you buy from us, so you will come again.

We're not in business for one season, but for the future.

These La Vogue garments are made of the season's fashionable materials, and after the season's accepted styles.

They're the latest models prevailing this season and are correct in every line.

They're all strictly man tailored.

The making and finish are of the highest grade.

That's why they always look well, and keep their shape until worn out.

Come in—examine them—try them on—make your selection while the stock is complete.

La Vogue Suits \$20 to \$35  
Other Good Suits \$10 to \$20

**J. E. Minter & Bro.**

**DIXIE FLOUR AND GRAIN CO.**

**Wholesale Grocers**

**Fruits and Produce**

**Laurens, S. C. Clinton, S. C.**

We are trying to build up a Fruit and Produce Business in Laurens and Clinton and ask for the co-operation of the Merchants in these towns and the surrounding territory. The trade is capable of supporting a local house of this kind easily and if you will give us your orders we guarantee to keep the goods in stock for you and to supply you with nothing but the very best quality of stuff obtainable. It is clearly to your advantage to get your supplies at home for these reasons:

First. Fruit and Produce is highly perishable. Ordering from a distance the goods are often delayed in transit and reach you in bad order. We can supply you with fresh supplies and give you immediate delivery right at your door in town. Same day orders are received from out of town points. Solid Refrigerator cars arriving every day or two, three cars this week.

Second. Our prices are lower. We handle Fruit and Produce in connection with our Grocery Business and can afford to sell closer than any exclusive fruit and produce house. We buy in solid cars direct from the markets as cheap as anybody. We have no additional expense for traveling salesmen, warehouse and office and labor. Further you can always save the difference in freight.

Lastly: Other things being equal, the home man ought to have the order. We spend our money here and help to build up and advertise the town. What's the use in patronizing foreign houses and letting the money get out of the county. Think it over and give us a showing. We stand on our record for square dealing. Get the habit of 'phoning us regularly.

**New Arrivals This Week.**

- New Arrivals This Week.**
- Solid car Northern eating Potatoes, 500 bushels, smooth, white stock.
  - Solid car Danish Cabbage, 24,000, medium size, hard heads—the keeping kind.
  - Car New York State Apples, assorted varieties. Also shipments of Florida Oranges.

- We Have in Transit:**
- 200 barrels Red Cross best patent flour.
  - 200 barrels Browns Best.
  - 100 barrels Liberty's Nordyke, half patent
  - 100 barrels Atlanta Milling Co's White Wings.
  - 100 barrels Tennessee Milling Co's Nellie King and Satinette Meal.
- This flour was bought when the market was dragging the bottom. We can afford to sell you cheaper than any Mill in the business is quoting. We are willing to divide our profit with you. See us about it. We also have a good round lot left on contract which we can sell for later deliveries.

**SNOW DRIFT LARD Hogless**

We contracted for a lot of this well known product before the present advances. Have just received a fresh shipment and can supply you at the old prices. You can't afford to handle Hog lard when you can get a better piece of goods 4 cents a pound cheaper.

**Solid Car Morris & Co.'s Meats.**

Supreme Brand Hams, Lard, Canned Meats, Cheese, Sausages and Pigs Feet. These Goods are standard. The Supreme Brand on Meat products is a guarantee that these goods are as fine as can be cut out of "Mr. Hog". Every pound Government inspected. The writer of this ad spent a week last Summer in Morris' Establishment and can vouch for its cleanliness.

**Also Have Ordered or in Transit:**

- Car Wheat Shorts.
- Car Red Rust Proof Seed Oats.
- Car Arm and Hammer Brand Soda.

Shipments of Blue Ribbon Candies, Perfection Syrup, Jupiter Cigars, Horsfords and Rumfords Baking Powder, Mixed Nuts, Raisins and Dried Fruits due to arrive this week. Get your supplies from us.

Shipments of "Possum" Brand Coffee. The finest piece of goods of its kind on the market.

Mr. Ray is now representing the house that makes this Coffee and will call on you in a few days.

Get Your Supplies from Us.

'Phone or wire at our expense when in the market for anything in the Grocery Line. We want your business and are prepared to supply you promptly and at reasonable figures.

Yours very truly,

**Dixie Flour and Grain Co.**

Laurens, S. C. Clinton, S. C.