

RAM'S HORN BRAND CANNED GOODS

This Fruit is extra quality, packed in three pound cans with heavy syrup. Every can guaranteed. Regular 30c Goods for 25c

- Pears sliced in halves... each 25c; per doz. \$2.75
- Apricots sliced in halves... each 25c; per doz. \$2.50
- Blackberries..... each 25c; per doz. \$2.50
- Peaches, yellow free..... each 25c; per doz. \$2.50
- Peaches, lemon cling..... each 25c; per doz. \$2.50
- Peaches, sliced..... each 25c; per doz. \$2.50
- Golden Drop Plums..... each 25c; per doz. \$2.25
- Damson Plums..... each 25c; per doz. \$2.25
- Egg Plums..... each 25c; per doz. \$2.25
- Green Gage Plums..... each 25c; per doz. \$2.25
- Muscat Grapes..... each 25c; per doz. \$2.40

Ferdell Coffee

Our care in selecting and handling Ferdell Coffee, makes it surpassingly excellent. The true coffee principal is retained, and the blend is exactly right.

30c, 35c, and 40c pound.

Home Made Cakes a Specialty

WATSON'S GROCERY



A Mother's Love wisely directed, will cause her to give to her little ones only the most wholesome and beneficial remedies and only when actually needed, and the well-informed mother uses only the pleasant and gentle laxative remedy—Syrup of Figs and Elixir of Senna—when a laxative is required, as it is wholly free from all objectionable substances. To get its beneficial effects always buy the genuine, manufactured by the California Fig Syrup Co.

SPECIAL SALE

ON OUR 40c. PECAN GLACE BAR 25c Pound WEDNESDAY ONLY

We use HOT WATER to CLEANSE with at our fountain. **one Elite CONFECTIONERY COMPANY, C. S. PICKRELL, Mgr.** 206 N. Oregon St. Phone 347 Under the Electric Fountain.

500 E. & W. Shirts On Special Sale

Seize the Opportunity. Buy a Year's Supply. See What You Save.

- E. & W. \$2.00 Shirts, Special Price \$1.35
- E. & W. \$2.50 and \$3 Shirts, special price... \$1.85
- E. & W. \$3.50 and \$4 Shirts, special price... \$2.65

All New Goods. All New Patterns. Sale Prices on Suits and Overcoats.



INITIATE FORTY-TWO AND HAVE 100 APPLICATIONS The El Paso dam of Beavers initiated 42 new members Monday night, bringing the membership to 312. However, there were 100 applications reported upon favorably and with those already elected, but who have failed to report for initiation, the membership will reach nearly 500. Six new applications were received Monday night.

WRITE OR TELEPHONE

For Pratt & Lambert's No. 61 Floor Varnish booklet and we will take pleasure in sending it.

Tuttle Paint & Glass Co.

Bell Phone 206. Auto Phone 1206.

We have a complete assortment **RIFLES SHOT GUNS AMMUNITION SADDLES, HARNESS SPORTING GOODS** Come in and let us show you. **Shelton-Payne Arms Company**

"SEE HOFFECKER"

For Store Fixtures and Glass. I just completed new windows for Guarantee Shoe Co., in new Buckler Block. Plate glass show cases a specialty! We silver mirrors.

214 North Stanton Street, El Paso, Texas

RAILROAD NEWS. URGE PATRONAGE FOR NEW TRAINS

G. H. Not Getting the Business It Deserves on Second Daily Train.

In fear that the G. H. & S. A. will remove the new double train service between El Paso and San Antonio, the interests along the line are doing some boosting for the new service. The road has made no threat, but it is known that patronage of the new service is not up to par. The new trains, Nos. 7 and 8, are not getting their share of the regular traffic on the old trains, Nos. 9 and 10. The new service is the same in equipment except that there is no observation car. The Alpine Commercial club is sending out some communications along the line, with the view of encouraging more traffic on the new trains. The service is considered a valuable asset to western Texas.

TO EXTEND THE COMMON POINT TERRITORY IN TEXAS The Texas freight rate zone, known as the Texas common point territory, will be extended westward to cover all points as far as Del Rio and Eagle Pass. This will reduce freight rates at a few points outside of the zone, but will not affect El Paso and vicinity. The change will be effective February 6.

ADDS TWO EXTRA TRAINS TO HANDLE ORANGE CROP. The Texas & Pacific railway has been compelled to put on two extra freight trains during last week in order to handle the extra traffic caused by the orange rush. The two trains will be kept in service until after the orange season is over.

RAILROAD PERSONALS. W. P. McNair, chairman of the Arizona railway commission, was in El Paso Monday. W. R. Brown, general freight and passenger agent of the E. P. & S. W. railroad, and Garnett King, assistant general freight and passenger agent of the same road, returned from Chicago Monday night.

G. S. Wald and R. M. Hoover, general superintendent and assistant superintendent, respectively, of the G. H. & S. A. railway, left Sunday night on a trip of inspection over the El Paso-Sanderson division of the road. W. C. Barnes, chief clerk to the general freight agent of the E. P. & S. W. railroad, is in Little Rock, Ark., attending a rate meeting of agents.

W. E. Douglas, claim agent of the G. H. & S. A. Railroad company, returned Monday from Denison, Texas. R. E. Nunn and Percy McGehee, Jr., and L. L. Forlet, of the G. H. engineering and engineering agent of the eastern end of the division Monday. J. E. Kinney, a car repairer on the T. P., has been laid up during the past week on account of illness.

H. B. Saville, a switchman on the T. P., who has been laying off for some time, has resumed his duties at the local yards. George Clarke, a yard man at the T. P. railroad yards, was taken to the hospital at Marshall, Texas, last week, suffering with rheumatism.

The E. P. & S. W. pay car, which was in El Paso last week, left Tuesday morning for its monthly trip over the eastern division of the road. J. W. White, E. P. & S. W. conductor of the local on the Dawson line, who was injured last summer, has been compelled to lay off on account of the injuries received at that time.

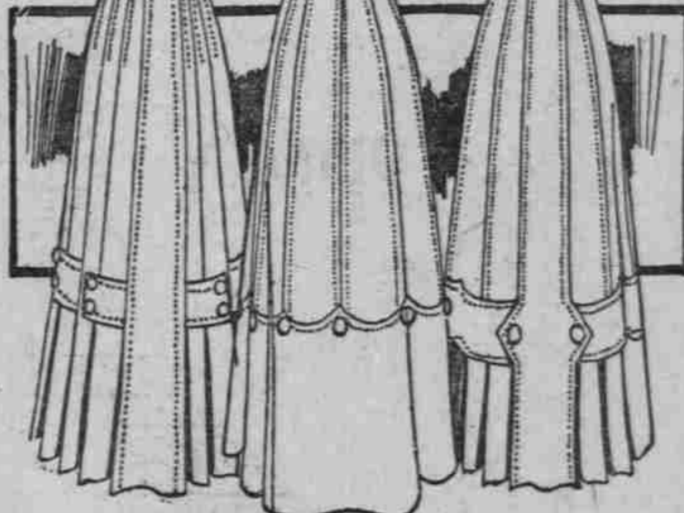
Harry Elliott, a car repairer at the local shops of the T. P., has been laying off during the last week. F. B. Stewart of the local stockyards has just returned from a trip through Illinois, Iowa and other of the middle states. Frank Hickey, machinist apprentice at the T. P.'s local shops, was removed to the hospital at Marshall, Texas, on account of illness. Sam Adair has resumed his duties in the yardmaster's office at the T. P. yards after a short vacation. W. J. Lewis, brakeman on the west end of the E. P. & S. W., has been laid up for a week on account of illness. Delivery horses for sale. Inquire at Ardoin's market.

January Skirt Sale

Begins Tomorrow Morning 500 Skirts--Including New Spring Models At 1-3 Less Than Regular Prices

For months we have been planning for this annual sale. We have succeeded in securing a remarkable collection of well tailored skirts, embracing more than 50 new spring models.

Skirts for Women, Misses and Girls



In this sale you are offered Panama, serge and soft finished worsted skirts of black, navy blue and brown, also cashmere and serge skirts in gray mixtures and stripes, and black voile skirts. Also included in the sale are girls' and misses' skirts in plain colors, including black, and the new checked effects.

More than 50 new spring models are shown—some plain or self trimmed, others trimmed with piping or folds of silk, satin or cloth, still others have silk embroidered panels.

You mustn't miss this opportunity to purchase a new spring skirt for just 1-3 less than the regular price.

Read these prices--- offered beginning tomorrow

- Skirt values to \$8.95; Sale price, **\$5.00**
- Skirt values to \$10.50; Sale price, **\$6.50**
- Skirt values to \$13.50; Sale price, **\$8.75**
- Skirt values to \$15.00; Sale price, **\$10.00**

First Showing of Spring Suits

\$18.75, \$20.00, \$25.00, \$30.00

Several express shipments of spring suits have reached us, giving us very good assortments at the above prices. These advance arrivals show the jaunty jacket 26 inches in length, and rather close fitting skirts, gored effects or pleated at two or four of the seams. Sailor collars are much in evidence and many of the skirts are finished around the bottom with a wide cloth fold. The general effect is plainly tailored with little suggestions of bright color here and there on the jacket. White serge is very much favored, also gray and tan mixtures and stripes. In the solid shades, navy and cadet blue, brown, tan, mode and, of course, black are prominent. At \$18.75, \$20.00, \$25.00 and \$30.00 we are showing very good assortments of spring suits. Even though you may not intend to purchase a suit right now, we shall be glad to have you see the new styles.

Calisher's

Calisher's



EL PASO MERCHANTS

Who Make Prompt Responses TO TELEPHONE CALLS.

EL PASO TRUNK FACTORY Bell 1054 Trunks, Bags and Leather Goods Made, Repaired and Exchanged. We store goods. Opp. Postoffice, across Plaza

WE REPAIR EVERYTHING. Key and Lock work, Guns, Pistols, Umbrellas and Bicycles. Agents Cleveland Bicycles and Emblem Motorcycles. Record: Chicago to New York, 999 miles, in 38 hours. EL PASO REPAIR SHOP, 208 North Stanton Street. Phone Bell 159.

Bell 818 **ICE CREAM** Auto 1188 Smith Ice Cream Co. FAMILY ORDERS PROMPTLY DELIVERED.

LUMBER BURTON-LINGO CO., FIRST & KANSAS STS. BELL 50; AUTO 1000

Bell 808 & 829 **DRUGGISTS** Auto 1088 A. E. RYAN & CO. 212 SAN ANTONIO ST. OPEN ALL NIGHT.

Bell 20 **CARR DRUG CO.** Auto 1020 202 Texas St. SURGICAL INSTRUMENTS AND DENTAL SUPPLIES.

HACK and BAGGAGE "Will be up right away." LONGWELL'S TRANSFER Reasonable Prices. Bell 1-Auto 1001 Careful Men.

Bell 1054 **BAGGAGE and MOVING** Auto 1966 "We're there in just a minute." Storage and Packing by careful men at right price. BELL 1054. ODOM'S TRANSFER. AUTO 1956

Use the **AUTOMATIC TELEPHONE** Secret, Prompt and Accurate. Efficient Service. Reasonable Rates. RING 1362, CONTRACT DEPT.

HENRY MOHR **CUT RATE HARDWARE** 509 S. El Paso St. Guns, Ammunition, Wagon Covers, Builders' Hardware, Tools, all kinds. Saddles, Harness, Cutlery, Tents Oil Paint Etc.

EL PASO THEATRE Polly OF THE Circus

SUND. & MOND. Jan. 22-23 Seats Sale Wed.

The **Crawford Theatre** THE BIG BITTNER COMPANY PRICES: 15c, 25c, 35c Matinee Wednesday, Saturday, Sunday, PRICES: 10c and 25c

MATTICE-BUSH CO. Heating and Plumbing Contractors "BEST BY TEST" Our Service is Prompt and Reliable. 109 N. Campbell St. Bell 956 Auto 2356