

"IT'S A SAVING AND A SATISFACTION TO BUY OF US"

B. Deutser Furniture Company, Money Saving Prices

True it is there are offered many "so called bargains" but this is the store that can show and deliver them to you at Money Saving Prices. These prices talk and the goods show for themselves. No argument needed.

ONE DOLLAR A DAY LESS

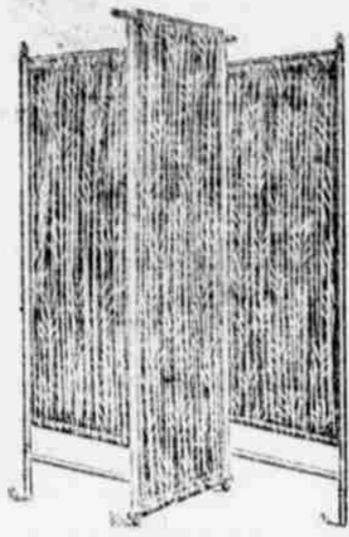
The above scheme inaugurated by us several years ago and continued each year.

You Should See Bed Room Suit; a big \$75 Value, containing Green Enamel Bed Dresser, Wash Stand, Chair, Table; above was \$75 Sept. 30. Until sold we will deduct \$1 daily.



THE RIGHT KIND OF CREDIT.

Credit that doesn't make you pay a penny more for credit than for cash, besides giving you the best for less price. Enjoy them while you pay for goods in small amounts from time to time—"the Deutser way of credit."



SCREENS

A Very Big One.

72 inch wide, when opened 72 inches wide; filled with fancy fabric. \$2.75, 1.65

Fancy Screens

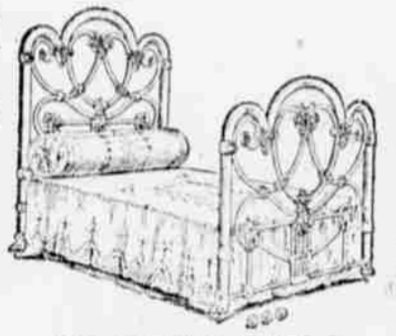
Size 24x30. Just the thing for fire places or ornamental. Filled in with fancy picturesque designs, many subjects. worth \$2.00 95c



MATTRESSES

Exclusive Agents for SEALY AND OSTERMOOR MATTRESSES.

Complete Stock Always on Hand.



IRON BEDS

Well, here's the place that shows more designs, better made than any house in this portion of the state.

See Deutser's Special, worth \$8.50 \$5.25

Hundreds of pretty designs to make up complete Bedroom Suits, Bird's-Eye Maple, Mahogany, Birch and Oak.

Iron Beds

Assorted colors and sizes Worth \$3, Our Special \$1.90

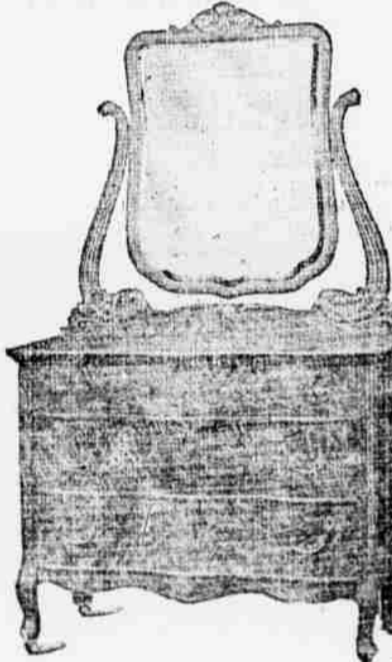
Sewing Rocker

Rattan Back, cane seat Worth 2.50, special \$1.25

FURNITURE EXPOSITION SAMPLES

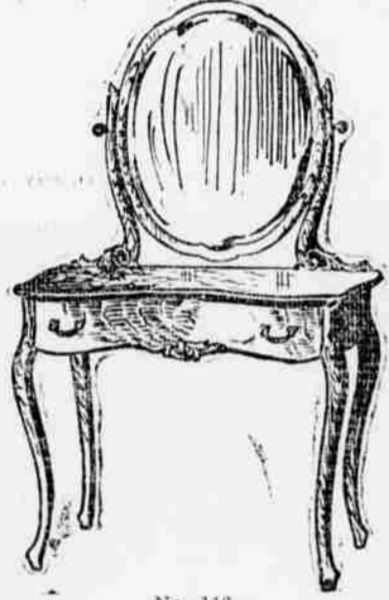
NEW ARRIVALS, GREAT VALUES IN BIRDSEYE MAPLE FURNITURE.

We had occasion to buy for 1-2 their value a quantity of Birdseye Maple Dressers, Washstands, Chiffoniers and Dressing Tables, just the things with Iron Beds. They are on sale Monday at less than manufacturers' prices. Make a selection at once. Only one of a design.



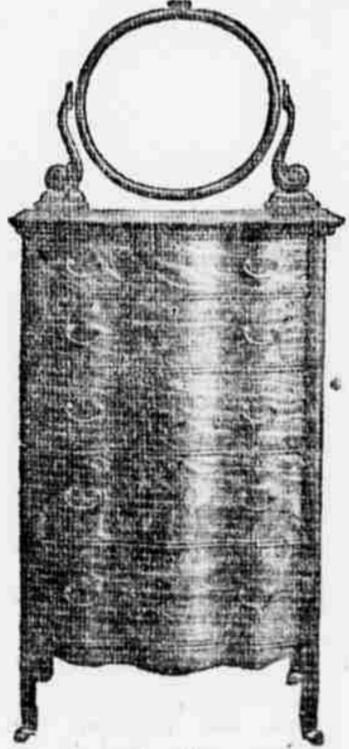
Birdseye Maple Dressers

No. 231. Large base, size 22x42, with 24x34 French Plate Mirror, double swell drawers; manufacturers' price \$30.00; Sample price \$21.50



Dressing Tables

No. 116. A pretty design, oval French Mirror, manufacturers' price \$22.50, Sample price \$10.75



Birdseye Maple Chiffoniers

No. 309. Contain 5 large drawers, with French pattern mirror; double swell front. One not only ornamental but serviceable; manufacturers' price \$25.00, Sample price \$18.75

No. 228. BIRDSEYE MAPLE. Princess Dresser. Low base; two larger drawers, French Pattern Mirror 18x26; something very pretty; manufacturers' price \$25.00; Sample price \$19.75

B. DEUTSER FURNITURE COMPANY, BEAUMONT, TEXAS

Magnolia Park.
This popular resort was thronged with visitors both afternoon and night, enjoying the cool breezes and the fine music, many of whom also visited and enjoyed the high class vaudeville both at the matinee and evening performance. The serpentine dance by Madam Ciss was well received and highly applauded while the double act of the Claire Brothers was repeatedly repeated. Requests in the intermission could not be executed and every one left with the highest praise for the management for the excellent entertainment they were given. On Tuesday and Thursday nights of the coming week the management has arranged for the music and dancing and on next Sunday they will put on a fine vaudeville entertainment than they have ever before attempted. In this con-

nection we would add that the traction service is most excellent and they have had will furnish all the cars necessary to carry passengers both out and in without any delay.
When Charles H. Yale originally produced his famous spectacle, "The Devil's Auction," it was called "The Double Auction" or "The Golden Auction." A few years more and it was known as "The New Devil's Auction." Then came "The New Devil's Auction" and "Forever Devil's Auction." They call "The Purvey and Bear Devil's Auction." And finally, upon reading the twentieth volume, it became "The Everlasting Devil's Auction," and in volume "Everlasting Devil's Auction." It seems as if Manager Yale has reached the limit of his titles. Kyle Theater, Monday, October 2.

Jasper Jettings.
Jasper, Texas, Oct. 1.—The ladies of the Methodist church gave a musical sale at the beautiful residence of Capt. and Mrs. E. J. Kellie last night. Ice cream, punch and other refreshments were served. The house and lawn was crowded with guests. The luncheon being beautifully decorated with Japanese lanterns, etc. All speak in the highest praise of the captain's hospitality. The musical was one of the greatest social events of the season. It was at a late hour when the guests, reluctantly took their departure. Capt. Kellie never does anything by halves and much credit is due him for his assistance in giving the good ladies of the Methodist church to make their entertainment a success. Quite a give some was realized, which will go to improve the new church fund.

IN RAILWAY CIRCLES IT WAS A ROMANCE

RAILROADS PROPOSED IN THIS SECTION.

SOME OR ALL TO BE BUILT

Southeast Texas Continues Most Perseverous Regardless of Presidential Campaign.

The constant cropping out of items relative to new or proposed railway building in Southeast Texas is most gratifying to say the least of it. As a usual thing when a presidential election campaign is on we are in exceeding great luck to be alive. This year, however, the financial people seem to be content no matter which way the election goes and the result is that the cramped money markets are not in evidence and we, of Southeast Texas, are on the eve of considerable railway construction.

Among the roads which may result in something advantageous are: The road from Marshall to Sabine. The Baker road from the northwest.

A Santa Fe extension from Rogan north from Buna, and some day the I. & G. N.

Speaking of two of these proposed lines the Newton County Record has the following brief mention:

The Santa Fe railroad is getting ready to build a line from Call, Rogan or some other point along there into Louisiana. It is more than probable that the line will start from Rogan or some point higher up and pass through Newton and on east.

The surveying crew has been at work several weeks.

Surveyors for the Orange & Northwestern have been in Newton and Sabine counties for the past week. They had no information to give the public but it has been known for some time that this company is preparing for an extension of eighty miles of their road. The owners of this road have immense pine land holdings, north and northeast of Burkeville and they want to get the road into this pine.

Batson is likely to have a railroad sooner or later while the extension of another construction of a line from Sour Lake on west is not improbable. The Gulf & Interstate is likely to develop into an important factor of a through line at any time. It is possible that there are no negotiations on now but there is hardly any railroad property in the country that will not be sold by its owners for some price.

Added to the railroad building prospects are the proposed construction plans of pipe lines from the east and extensions north. Pipe lines are in many respects as good as railroads. They furnish transportation facilities and give the product an outlet which helps both the producer and the community that gets the oil.

CONFEDERATE VETERANS.

Met in Monthly Session Yesterday at City Hall.

The United Confederate Veterans, Albert Sydney Johnston camp No. 75, met yesterday afternoon at the city hall, with Captain George W. O'Brien, commander, in the chair.

The invocation was delivered by Chaplain W. E. Rogers.

The attendance was not so large as the members had hoped for, and they asked The Enterprise reporter to call attention to the non-attendance of some of the brethren.

The committee on subscriptions for the fund for the erection of a monument over the grave of General John B. Gordon reported \$4 collected, and asked for further time, which was granted.

A committee was appointed to draft resolutions of respect to the memory of the deceased members, L. P. Ogden, Munroe McFarlane and R. W. Tevis, were granted further time on account of the absence from the city of some of the members of the committees.

After a general love feast upon reminiscences, the camp adjourned until next regular meeting.

NEW WELL AT JENNINGS.

Heywood Oil Company Brings in Satisfactory Producer in That Field.

The Heywood Oil company brought in a good producer in Jennings Saturday, October 1. Captain W. C. Tyrrell, in replying to a question asked by an Enterprise reporter concerning the well's capacity, seemed to be a bit shy about stating the actual amount the new well would yield, but added that "the Heywood Oil company could get all the oil out of it he well that it wanted."

Married.

Mr. A. M. Grimes of Ganado, Texas, and Miss Anna Ford of Beaumont, were married yesterday afternoon at the residence of the bride on Fourteenth street, by Rev. J. D. Holmes.

E. L. Hawes, a newspaper man with extensive practice in Mexico City, was in Beaumont yesterday, headed for across the Rio Grande. Mr. Hawes has been doing the work of a reporter and stopped off on his return trip to size up the oil prospects.

Miss Maybell Hall Surprised Her Friends.

Wedded and Then Worked

To Be Faithful to Her Employer.—Mr. Peacock of San Antonio Stole Her Away.

Miss Maybell Hall is known to many of the young people of Beaumont as a charming young lady in the employ of the busy Martin Weiss Dry Goods establishment but they must hereafter change their information.

"It's oh! so sudden!" was undoubtedly her exclamation Saturday afternoon when a handsome young man answering to the name of Peacock came in from San Antonio and asked her in his own cunning way to be his bride. She may have answered with her eyes or perhaps she just gave that silent assent so sweet and so expressive but her friends will insist for all time that it was quite sudden with all that.

Miss Hall has been a member of the younger society set here and is pretty and accomplished. She came from St. Louis this season, presumably to work for Mr. Weiss during the winter. Last winter she held a responsible position in San Antonio, and it is guessed that it was there where this budding love first took root between them nor is it beyond surmise to figure that distance continued to lend enchantment and that the young man finally became so impatient that the trip of Saturday was not only planned but beautifully executed.

Miss Hall remained at her post of duty all through yesterday and then when she went to supper the ceremony took place. She did not show upon her pretty face that anything had happened in her life but calmly returned to her work and remained there until 1 o'clock Saturday night. The end of the week always brings about a big rush in this store and Miss Hall was not the fellow to leave her employer in a lurch with so much business on hand.

At 11 o'clock the young man called at the store and accompanied her away. They went to the hotel and spent the night, leaving yesterday morning at 7:20 for San Antonio.

It is hinted that this item in the Enterprise may be Mr. Weiss' first intimation of the affair, but it is easy to see that he will have little fault to find with the happy couple who are now safely "at home" in the Alamo City.

Miss Hall was one of the most valued members of the Episcopal church choir and yesterday they were wondering where she was. She was rooming with Miss McFarlane, and the latter helped down her surprise after 11 o'clock Saturday night by assisting with the packing of the trunk preparatory to the departure yesterday morning.

Mr. Peacock is a promising young business man of San Antonio.

AMUSEMENTS.

The Devil's Auction plays at the Kyle tonight and the indications point to a well filled house notwithstanding this production has been upon the stage for twenty-three years.

The bill boards around the city recite the fact that it is younger than ever and the New Orleans Press was specially complimentary of the production.

The advance sale is healthy although in the case of such a large theatre as the Kyle it is still possible to get many good seats.

The coming of this production brings to mind the older days of Beaumont's theatrical life. When Mr. John H. Goshue was manager of the open house—the little frame building that saw such an excellent production it would have been a suicidal piece of business for him to bring to the city a musical comedy sparkling with pretty girls. The people here would have proclaimed it a breach of morality. In those days, too, the Devil's Auction was about the only real musical comedy about.

Now it is all changed. The production gets large houses and appreciative audiences. There is plenty of good music in it and quite enough acting and lines to give those days from the most overworked brain.

The coming of this show is today hailed with delight by the same people who twelve years ago would have condemned it—such is life in a city.

Manager Yale's claim that the "Devil's Auction" is the oldest in name yet the newest in point of novelty, can well be substantiated in this the twenty-third edition of this famous spectacle, as every thing is new from the time the curtain rises on the first act until it is rung down on the beautiful transformation scene.

Amos (love) at the close of the performance. Every act, novelty and feature being new, all the scenery, property, etc. In fact, not one old feature is retained and the theatre going public of Beaumont certainly have a treat in store for them on Monday, Oct. 2, at the Kyle theatre.

A most notable feature has been obtained by Manager Chas. H. Yale for the twenty-third edition of his "Everlasting Devil's Auction." In the management of Miss Lizzie N. Wilson—the very clever singer and dancer comedienne, who will appear as Janet the milk maid. Miss Wilson who is the sister of the famous Golden Voice Singing Comedian, Al H. Wilson, is a very handsome and sprightly actress, possessed of a splendid voice, magnetic appearance, and a most clever manner, which in conjunction with rare ability as a comedienne, forms a combination which is seldom seen upon our later day stage. Kyle Theatre, Monday, Oct. 2.

W. C. TYRRELL, Pres. and Mgr. A. M. McFADDIN, Vice-Pres.
E. C. TAYLOR, Secy. J. R. NORVELL, Treasurer.
W. C. TYRRELL, Jr., Asst. Secy. and Treasurer.

Heywood Oil Co.

PRODUCERS and SHIPPERS OF CRUDE OIL OF BEAUMONT AND SOUR LAKE, TEXAS.
Complete Equipment and all Facilities for quick deliveries.
OFFICE:—Kyle Opera House Bld'g.

References—Any of the Beaumont Banks.

K. C. S. Ry.

Texarkana & Fort Smith Ry.

World's Fair Route

...60...
ST. LOUIS

Through Sleepers Without Change
via Shreveport and Cotton Belt Route.

...Dining Car Service...
This Train Leaves 7:45 A. M. Daily
Arriving in St. Louis Next Morning.
Double Daily Service to Kansas City.

Through Buffet Sleepers

C. E. SWINDELL, Genl. Pass. Agt.
R. A. MORRIS, City Pass. & Ticket Agt.

BEAUMONT ICE, LIGHT & REFRIGERATING CO.

LIGHTING AND POWER
ICE AND COLD STORAGE

Rates Furnished on Application. All Orders Receive Prompt Attention

Main Office 380 and 382 Tevis St.

WORLD'S FAIR ROUTE

ST. LOUIS THROUGH SLEEPERS Santa Fe and

Harvey Dining Halls. Stop-over at Eureka Springs. W. A. TULEY, General Passenger Agt., Fort Worth, Tex.

You can't afford to miss the great

World's Fair

The greatest show ever held, an education within itself, equal to a journey 'round the world.

Why not go now—this month

Rates are very low, accommodations are easily had at reasonable prices. If you are in doubt about the cost of a visit you can purchase a complete round trip including railroad ticket, hotel accommodations with meals, admissions to the Fair and all necessary expense for any number of days at a certain fixed price, with arrangements all made in advance. Write us about this at once—10-day. The Cotton Belt Route operates

Through Daily Trains to St. Louis

carrying sleepers, dining cars, chair cars, coaches
Write for illustrated World's Fair folder containing map of grounds, train schedules, etc.

E. W. LABEAUME, G. P. T. A.
St. Louis, Mo.
or call on Cotton Belt Route Ticket Agent