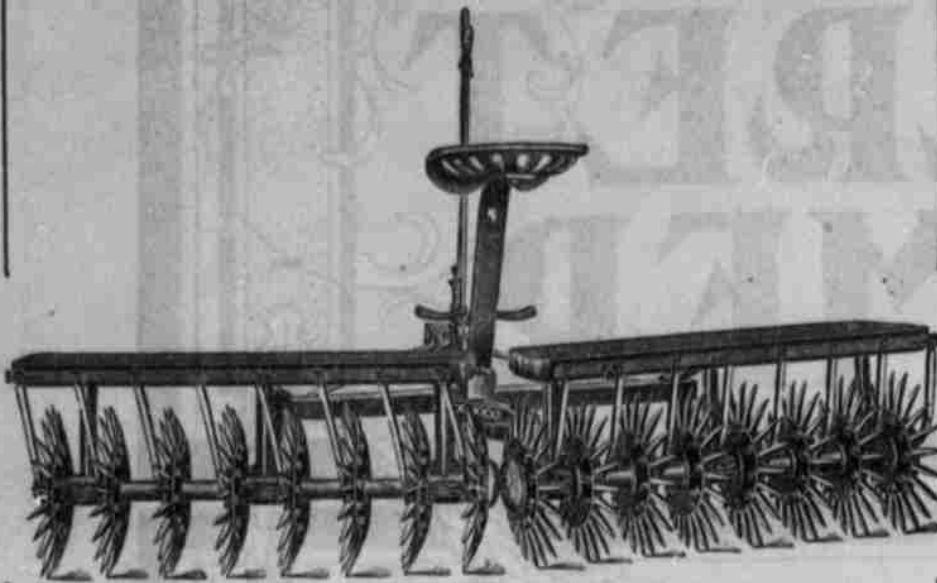


ALFALFA

(ONE OF NATURE'S RICHEST GIFTS TO MAN.)



EMERSON ALFALFA RENOVATOR

Will destroy weeds and all foreign grasses in your alfalfa fields; loosens the soil to a depth two to four inches, forming a dust mulch which protects the roots from the sun and holds the moisture which otherwise would evaporate.

Write us for further information. Sold only by

MILLER-CAHOON CO.

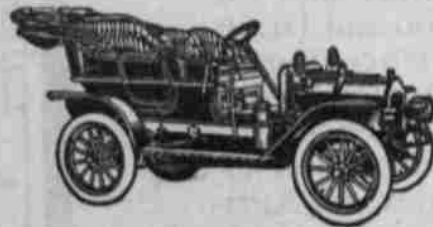
PIONEER IMPLEMENT DEALERS OF UTAH

L. C. MILLER, Gen'l Mgr.

MURRAY, UTAH

THREE CAR LOADS OF REO AUTOMOBILES SHIPPED OUR COUNTRY TERRITORY IN MAY

WHO WILL BE THE NEXT TO SHOW WISDOM ALONG THESE LINES, TO SHOW APPRECIATION OF MODERN UP-TO-DATE METHODS ON THE FARM?



REMEMBER A REO AUTOMOBILE
CAN BE USED FOR A GREAT MANY PURPOSES TO YOUR ADVANTAGE.

WRITE AND ASK US ABOUT THIS.

SHARMAN AUTOMOBILE CO.

109-111 W. So. Temple St.

SALT LAKE CITY, UTAH

THE WORLD'S BEST LAYERS

White Orpingtons

White Leghorns

BRED IN LINE—Bred by Selection for Heaviest Known Egg Production. A life devoted to the study of Increased Egg Production is giving results that will please and amply repay you for investigation.

C. S. GORLINE

1224 East 12 South Street

SALT LAKE CITY, UTAH

AGRICULTURE

LUCERN THE BEST FORAGE CROP.

We are in receipt of an inquiry from a subscriber at Sunnyside, Utah, who asks if there is a more profitable forage crop than alfalfa. He also desires to know how it compares as a forage crop with Brome grass.

In reply we can say that we do not have in this western country a crop that begins to compare in value with lucern as a forage crop. It is rich in the protein elements which are converted by animals into flesh, muscle, and bone, and when fed in combination with foods poor in protein and containing large proportions of fat making elements, forms a most desirable ration for all farm stock. It is of course a valuable crop to grow upon the land as it is a legume and has the power of gathering nitrogen, one of the most excellent plant foods, from the air. Its deep reaching roots bring up plant foods from the subsoil, and place them where they can be utilized by other crops. When plowed under its leaves, stubble, and roots add humus and nitrogen to the soil, and leave it in a most excellent condition for all other farm crops. It is superior in every way to Brome grass, with the possible exception of comparison as a pasture crop.

Brome grass can better be compared in feeding value with timothy. Its special value in our section is as a drouth resistant crop. It is doing exceptionally well on our dry lands, especially the first three or four years after it is seeded. We have noted on our visit to the dry farms this season that it does not seem to do so well after four or five years, and in fact begins to deteriorate after that time.

FARMERS, ATTENTION! We are in the market at all times for Wheat, Oats and Barley. Write to us for prices. We pay Spot Cash.
DAVID ROBBINS & CO.
Salt Lake City, Utah.

TOURIST CARS TO TOUR AUGUST TWELFTH.

Pilots Will Lead Way to San Francisco Via Valley Line and Back Along Coast.

"Bring your machines, you owners,

just so they are Tourists, and come along," is the slogan of the biggest automobile tour ever undertaken by private manufacturers in California and probably the biggest in the country, which will be started under the auspices of the Auto Vehicle Company Wednesday, August 12.

Arrangements for the big run were completed yesterday in the office of Manager Conwell of the company after a conference with Pilot C. B. Smith, who has just returned from San Francisco after an inspection of road conditions.

The route will be to San Francisco via the Valley line and back along the coast. Any Tourist machine is eligible but other makes are barred. The average running time of the trip, according to careful calculations by Pilot Smith, should be fifteen miles per hour in order to complete the tour in four days.

The only requirement for entering the run free of charge is that the car driven must be a Tourist. The run will in no way be an "experts'" race and the greenest amateur at the wheel will have an even chance to connect with some of the prize money, but in order to add interest to the event, competitive features will be introduced in the way of establishing controls and limiting running time. Awards will be made for general reliability, perfect scores and so forth.

Cars Five Minutes Apart.

Cars will be started on a five-minute headway and distances between machines will be maintained under penalty, thus assuring each car of a clear road. C. W. Sahland and C. B. Smith, who have repeatedly inspected the road, will pilot the tour and in addition to marking the route clearly with confetti and flags will supply



Plows, Harrows, Planters, Cultivators, Potato Diggers, Stalk Cutters, Carts, Etc.
THE WORLD'S BEST Over 66 years of KNOWING
How is hammered into every one of them.
Over 1400 different sizes and styles for all soils and sections. Send for our catalog—FREE.
Just Say **P & O** To Your Dealer He will do the Rest
PARLIN & ORENDORFF CO., CANTON, ILLS.

UTAH IMPLEMENT-VEHICLE CO

Salt Lake City, Agents