



### That's the Trouble —Hot Biscuits

THEY go hand-in-hand with indigestion, and the Doctor only a step behind.

Why do mothers persist in serving hot breads? A child's digestion is as undeveloped as its body. It should be given nutritious food, that is easily digested. Hot biscuits are not easily digested—Ask your doctor.

## AMERICAN-MAID BREAD

solves the problem. It is easily digested. It is a wholesome, dainty, appetizing food. Builds bone and muscle. It will make a man of that boy, and he will love every crumb of it.

OGDEN BAKING CO.  
Ogden, Utah.



## ENGINEERS OF UTAH STATE ROAD COMMISSION MEET TO HEAR A DISCUSSION OF CEMENT ROADS

By invitation of the Portland Cement association, engineers of the Utah state road commission, city of Ogden, and the cement producing companies of the state, assembled in the office of the Utah Sales company, 515 Eccles building, yesterday afternoon, to meet Prof. Duff A. Abrams, of the Lewis Institute, Chicago, Ill.

Professor Abrams has devoted his life to research work in concrete and especially concrete highways and materials. He is a man of international reputation and his discoveries are revolutionizing the methods of concrete construction generally.

Utah abounds in suitable material for everlasting, cheap constructed concrete highways and, with the idea of developing these immense deposits in the state, the Portland Cement association asked Professor Abrams to come to Ogden to address the engineers of the state.

Attending the meeting were: James Pingree, secretary and treasurer Union Portland Cement Co.; C. A. Day, president Ogden Portland Cement Co.; R. E. Bristol, president Utah Sales Co.; H. C. Day, vice president and general manager, Ogden Portland Cement Co.; O. C. Hart, superintendent Ogden Portland Cement Co.; J. M. Tracy, city engineer, Ogden, Utah; W. A. Richmond, assistant state highway engineer; C. S. Fisher, state bridge engineer; J. O. Burson, state road commissioner; L. H. Grossbeck, state road commissioner; R. N. Miller, district engineer, state highway; George Soife, chemist Portland Cement Co. of Utah; F. A. Sutton, state testing laboratory; G. B. Stone, Portland Cement association inspector; W. G. Gilson, care Utah Sales company; Wm. F. Long, district engineer Portland Cement association; Levi Muir, district engineer state highway.

Special meeting of I. U. of S. & O. E. at Moose hall at 8 p. m. tonight. Second Vice President MacKenzie is to speak.

### NOTICE

All stationary engineers and firemen. Special meeting of I. U. of S. & O. E. at Moose hall at 8 p. m. tonight. Second Vice President MacKenzie is to speak.

W. H. HOLMES, Secy.

### WORLD'S MARKETS

NEW YORK, Oct. 29.—Steels shared with oils and motors in the strong tone at the opening of today's stock market, being favorably influenced by the quarterly statement of the United States Steel corporation. United States Steel rose only a point, but advances in allied stocks, notably Republic, Lackawanna and Bethlehem were more extensive. General Motors the recent feature, gained four points at the outset, affiliated issues rising 1 to 2, while leading equipments advanced two or three points. Food, shipping and tobacco shares also participated substantially in the advance.

The more extensive gains of the early trading included Crucible and Republic Steels at 5 and 6 3/4 points respectively, Mexican Petroleum 4 1/4, American Sugar 3 1/2, Cuban-American Sugar 1 1/2 and Worthington Pump 12. Profit taking caused the usual reactions of 1 to 3 points, the setback in several issues exceeding that range. Trading became dull on the reversal but quickened again when buying of high priced oils was resumed. Texas company advanced 11 points to a new high of 320 and steels strengthened again. Call money opened at 9 per cent.

Trading became apathetic at midday, leaders hesitating probably as a result of uncertain money conditions. There were several noteworthy exceptions, however, Texas company and the sugar group making material additions to the gains of the morning. Bethlehem and United States Steel also reflected steady accumulation.

### CHICAGO GRAIN

CHICAGO, Oct. 29.—Higher quotations on corn today accompanied a new upturn in hog values, the fact that receipts of corn were meager tended also to strengthen values. Commission houses did most of the buying. Opening prices, which varied from the same as yesterday's finish to 3/8c higher, with December 1 1/2 to 1 3/4, and May 1 1/4 to 1 1/2, were followed by a slight downturn in some cases and then a material advance all around.

Oats were dull but hardened with corn. After opening unchanged to 1/4 off, including December at 70 1/2 to 70 3/4, the market made slight general gains.

Provisions reflected the rise in the hog market. Offerings were light. Further upturns which took place were ascribed in part to gossip about a big loan to Germany. Predictions of wet weather had an additional bullish effect, and so, too, did scarcity of cars. The corn close was steady, 1/2 to 1/4c net higher, with December 1 1/2 to 1 3/4 and May 1 1/4 to 1 1/2.

Increasing demand for lard and ribs with reports of a half billion dollar loan to Germany counted later against the provision bears.

CHICAGO, Oct. 29.—				
	Open	High	Low	Close
<b>Corn—</b>				
Dec.	1.26	1.27 1/2	1.25 1/2	1.27 1/2
May	1.23 1/2	1.24 1/2	1.23 1/2	1.23 1/2
<b>Oats—</b>				
Dec.	.70 1/2	.71 1/2	.70 1/2	.71 1/2
May	.73 1/2	.74 1/2	.73 1/2	.74 1/2
<b>Pork—</b>				
Oct.	34.29	34.70	34.15	24.62
Jan.	26.70	26.90	26.70	26.80
Jan.	24.62	24.75	24.60	24.67
<b>Ribs—</b>				
Oct.	19.25	19.25	19.00	19.00
Jan.	18.55	18.72	18.50	18.70

**CASH SALES.**  
CHICAGO, Oct. 29.—Corn No. 2 mixed \$1.41@1.42; No. 2 yellow \$1.42@1.42 3/4.  
Oats No. 1 1/4@73c; No. 2 white 71 1/4@72 1/2c; No. 3 white 69 1/4@70c.  
Rye No. 2 \$1.37@1.37 1/2.  
Barley \$1.20@1.40.  
Timothy \$8.50@11.25.  
Clover nominal.  
Pork nominal.  
Lard \$27.00.  
Ribs \$18.50@18.25.

**CHICAGO LIVESTOCK.**  
CHICAGO, Oct. 29.—Hogs—Receipts 13,000; market 20 to 25c higher; bulk \$13.50@14.00; top \$14.15; heavy \$13.60@14.00; medium \$13.50@14.15; light \$13.70@14.10; light light \$13.25@13.75; heavy packing sows, smooth, \$12.00@12.50; packing sows, rough, \$12.75@13.00; pigs \$12.50@13.50.  
Cattle—Receipts 18,000; market firm; beef steers, medium and heavy weight, choice and prime \$16.75@19.50; medium and good \$10.75@16.50; common \$8.25@10.50; light weight, good and choice, \$14.00@19.25; common and medium \$7.50@13.75; butcher cattle, heifers, \$6.75@14.50; cows \$6.50@13.00; canners and cutters \$5.25@6.50; veal calves \$17.00@18.00; feeder steers \$6.75@13.00; stocker steers \$6.00@10.25; western range, steers, \$7.75@15.50; cows and heifers \$6.00@13.00.  
Sheep—Receipts 25,000; market firm; lambs \$12.35@15.50; culls and common \$8.50@12.00; ewes, medium, good and choice \$6.75@8.25; culls and common \$3.00@6.50; breeding \$6.75@12.50.

**OGDEN LIVESTOCK MARKET.**  
Cattle—Receipts 354; choice heavy steers \$8@9; good steers \$7@8; fair steers \$5@7; choice feeder steers \$7@8; choice cows and heifers \$6@7.50; fair to good cows and heifers \$5@6; cutters \$4@5; canners \$3@4; choice feeder cows \$5@6; fat bulls \$5@6; hologna bulls \$4@5; veal calves \$10@11.  
Hogs—Receipts 700; choice fat hogs, 175 to 250 lbs., \$12.50@13.00; bulk \$12.50@12.75.  
Sheep—Receipts 7210; choice lambs \$10@11.50; wethers \$6.50@7.50; fat ewes \$5@6; feeder lambs \$9@10.

**OMAHA LIVESTOCK.**  
OMAHA, Neb., Oct. 29.—(United States Bureau of Markets.)—Hogs—Receipts 3500; market 15 to 25c higher; top \$14.10; bulk \$13.50@13.85; heavy weight \$13.75@14.00; medium weight \$13.85@14.10; light weight \$13.75@14.10; heavy packing sows, smooth,

## Another Car Load of RANGES and HEATERS Just Received

THIS WEEK WE Give Away Free

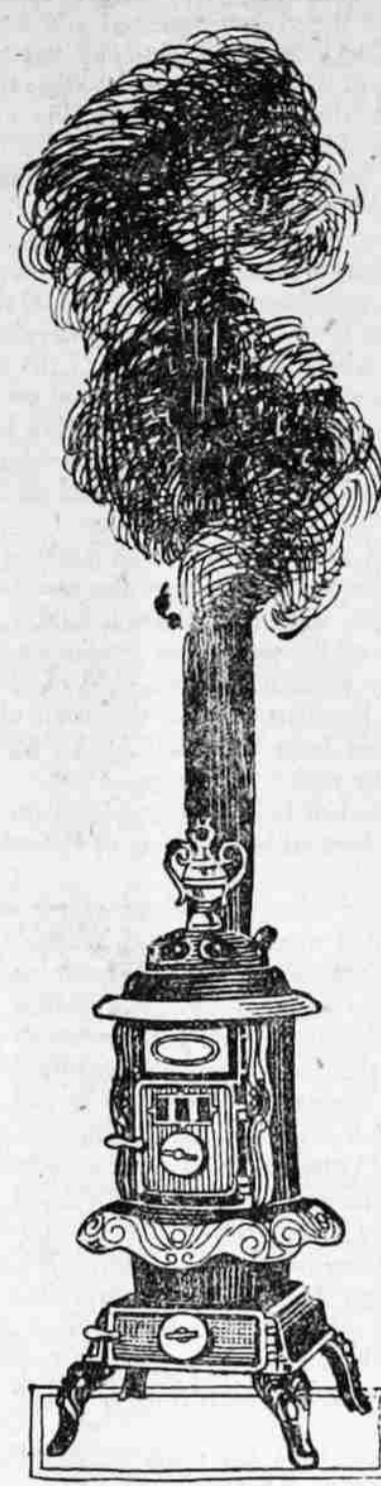
ONE 31-PIECE SET OF BLUEBIRD CHINA  
With every Universal Range and Heater sold during the week. Be sure and get your Range and Heater this week

BECAUSE IT IS A SETTLED FACT THAT IT WILL BE A LONG TIME BEFORE RANGES AND HEATERS ARE CHEAPER.

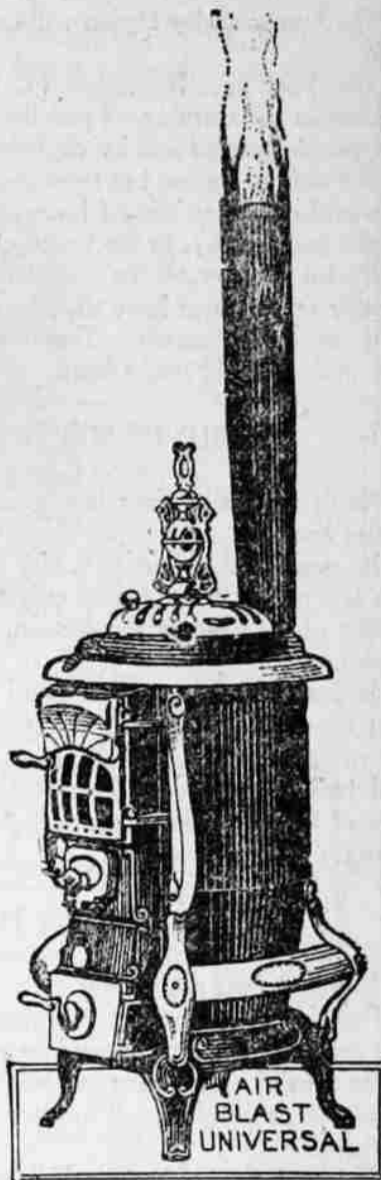
So take advantage of this splendid offer.  
We also have a number of good second-hand ranges at a savings. Come and see them.

It is time to think about that SONORA PHONOGRAPH that you are going to enjoy this winter.

COME IN AND HEAR IT and you will be convinced that it is the highest class talking machine in the world.  
Prices from \$50.00 to \$1000.00



THE OLD WAY



THE UNIVERSAL WAY

## Home Furniture Company

CORNER TWENTY-THIRD ST. AND WASHINGTON AVE.

**LIBERTY BONDS.**  
NEW YORK, Oct. 29.—Liberty bond prices at 2:55 p. m. today were: 3 1/2s 100.94; first 4s 95.04; second 4s 93.16; first 4 1/4s 95.40; second 4 1/4s 93.24; third 4 1/4s 95.22; fourth 4 1/4s 93.34; Victory 3 3/4s 99.58; Victory 4 3/4s 99.56.  
**THE FUMBLE!**  
A rainy day. A gridiron slippery. Still will they play. This game means history. The pigskin's wet. Time's flying fast. They cannot gain.  
They try a pass. The ball speeds true. The end is waiting. He'll take a chance. He's hesitating. A solid thump. It hits his chest. It slips away. He did his best. The ball bounds high. It nestles downward. Not to him—but To the opposing forward. A thrilling run Through puddles swollen. A score is made. A game is "stolen."  
People who find life an empty dream frequently make a howling nightmare for others.  
Read the Classified Ads

**KANSAS CITY LIVESTOCK.**  
KANSAS City, Mo., Oct. 29.—(United States Bureau of Markets.)—Hogs—Receipts 8000; market active 40 to 50c higher; bulk \$13.50@14.00; heavies \$13.50@14.00; mediums \$13.75@14.00; lights \$13.50@14.00; light lights \$13.25@13.75; packing sows, \$11.75@12.75; pigs \$12.50@14.00.  
Cattle—Receipts 22,000; market steady to weak; heavy beef steers, choice and prime \$15.75@18.35; medium and good \$12.00@15.75; common \$9.75@11.85; light beef steers, good and choice \$13.00@18.15; common and medium \$8.25@13.00; butcher cattle, heifers, \$6.50@12.50; cows \$6.50@10.75; canners and cutters \$5.00@6.50; veal calves \$12.50@16.75; feeder steers \$8.00@13.50; stocker steers \$5.75@9.75.  
Sheep—Receipts 7000; market generally steady; lambs \$13.00@15.35; culls and common \$8.00@12.25; yearling wethers \$9.50@10.75; ewes \$6.00@7.50; culls and common \$3.00@5.75; breeding ewes \$7.50@14.00; feeder lambs \$10.50@12.25.  
**BUTTER AND EGGS.**  
CHICAGO, Oct. 29.—Butter unchanged. Eggs higher; receipts 2498 cases; firsts 57 1/2@58 1/2c; ordinary firsts 50@52 1/2c; at mark, cases included, 52@57c; storage packed firsts 59 1/2c.  
**MINNEAPOLIS PRODUCE.**  
MINNEAPOLIS, Minn., Oct. 29.—Flour unchanged.  
Barley 1.08@1.32.  
Rye No. 2 \$1.31 1/4@1.31 1/2.  
Bran \$37.00.  
**BAR SILVER.**  
LONDON, Oct. 29.—Bar silver 66 1/2d per ounce.  
Money and discount unchanged.  
**MONEY EXCHANGE.**  
NEW YORK, Oct. 29.—Mercantile paper unchanged.  
Sterling: Demand \$4.16; cables \$4.16 3/4.  
Francs: Demand 8.76; cables 8.74.  
Guilders: Demand 37 3/4; cables 38.  
Lire: Demand 10.66; cables 10.63.  
Marks: Demand 3.30; cables 3.35.  
Time loans strong, unchanged.

### OCCIDENT FLOUR

**It Will Not Cost You a Penny**

to try Occident Flour, for the Russell-Miller Milling Company will stand back of your investment with an iron-clad, money-back guarantee, which we will cheerfully carry out for them.

Let your grocer send you a sack—make as many bakings as you choose from it—then if you are not willing to say it beats any other flour you have used, your money comes back for the asking.

Utah Grain & Elevator Co.  
Ogden, Utah.  
Wholesale Distributors.

The ACE  
Price \$11.00

## Here's a Wonderful Fitter

Some men go for years needing such a simple shoe as a combination last without even knowing that there is such a thing. The variety of Walk-Over shapes provides a perfect fit for everybody. A combination last is simply one made two widths narrower at the heel than at the tread. It fits thin-heeled men like a silk sock; and it's a swagger-looking shoe, too—now isn't it?

# Walk-Over Boot Shop

2481 Washington Avenue.

## McCREADY'S AT 161-163 25th St.

Is Closing Out His Stock Of  
\$25,000.00 Worth of Shoes,  
Ladie's & Gent's Furnishings,  
Notions, Bedding and Millinery  
At Wholesale Factory  
Prices

SALE NOW ON

## McCREADY'S AT 161-163 25th St.

### Sure Relief

**BELL'S  
INDIGESTION  
CURE**

6 BELL'S  
Hot water  
Sure Relief  
**BELL'S  
FOR INDIGESTION**