

All Operators Waiting for Railroad Branch Lines to the Mines

A review of the year of the various mining districts embraced within the radius of the Deep Creek country is not possible except that its culmination should be given the space of an entire special edition.

DEEP CREEK HAS GONE RIGHT ON

By G. A. HENRY

Spring Creek and Pleasant Valley in Utah, are considered as a part and parcel of the Deep Creek country, it can be readily figured how difficult it would be to write a detailed report when either one in the list named could fill the space here occupied.

The Western Pacific railroad on the north, a most wonderful change in conditions has occurred during the past year, but with the contemplated construction of branches and spurs, penetrating the works and mines, which will be put in active operation during the present year, the additional difference will be very much greater.

and winter supplies are being hauled into camp for the purpose of having the development go on regardless of the spook of 1893 appearing again.

development made during the present year except a temporary disappointment occasioned by the slump in copper.

Section Made up of Utah and Nevada Camps is a Wonder.

That this property stands out as one of Utah's greatest copper properties no one questions.

WAKE UP!

The Time. The Place. The Opportunity Is Now Here

SALT LAKE CITY

is now admitted by all to have the brightest future of any city in the entire West, and will be the first to go forward by leaps and bounds as soon as normal conditions prevail.

IMPROVE THE OPPORTUNITY.

Now is the best chance the people ever had to buy gilt edge securities at very low prices. Buy now, and keep on buying.

Buy railroad stocks, industrial stocks or good mining stocks, especially copper stocks.

Buy railroad stocks, industrial stocks or good mining stocks, especially copper stocks. Copper stocks pay greater dividends than any other.

Hubbard Investment Co. 78 WEST SECOND SOUTH STREET.

GENERAL VIEW OF STEPTOE REDUCTION PLANT

Rosier House Reverberatories Power House Machine Shops Warehouse Office Building Concentrator Ore Line Trestle

THE CUMBERLAND-ELY MINE



Boarding House and Cottages of Miners at Veteran Mine of Cumberland-Ely Copper Company, October 1, 1907.

Without a rival, except its neighbor, the Nevada Consolidated, the Cumberland-Ely Mining company has been steadily developing its magnificent estate during the past year, with the most gratifying results to its stockholders.

Millions of tons of ore have been blocked out, and no one yet knows how much treasure is hidden in the company's territory.

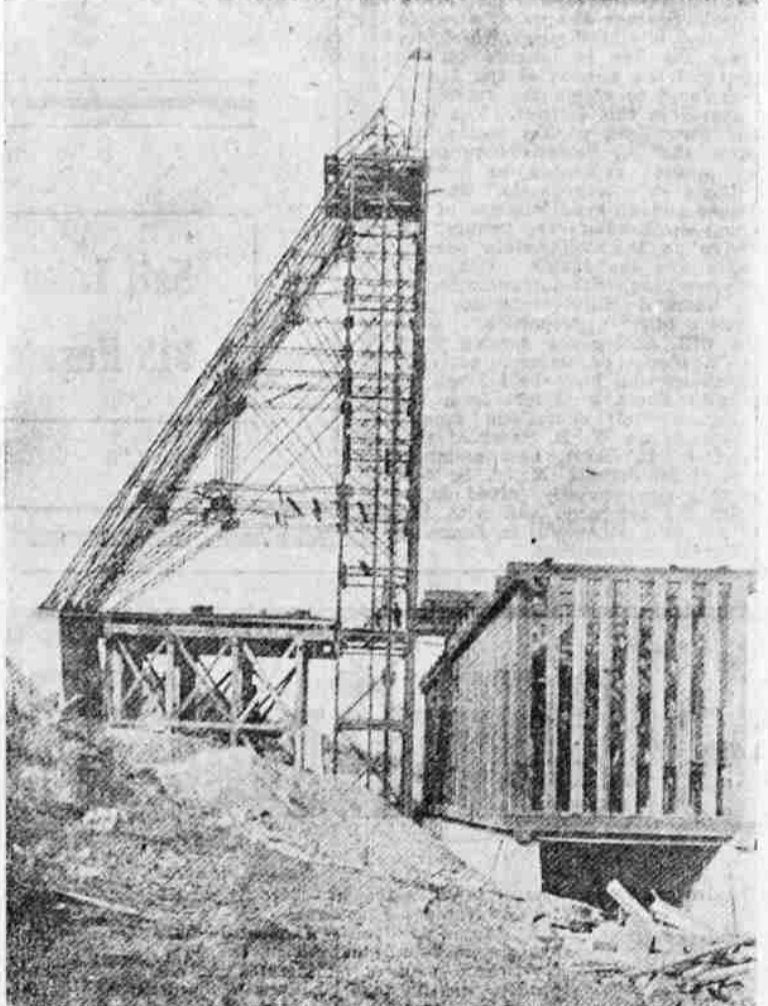
Its Wonderful Resources. The company is incorporated under the laws of Maine and is capitalized for 1,300,000 shares at \$5 a share.

that region has produced has been found. The Veteran tunnel opened these storehouses so the rich ores could be reached, and the more direct reference to this property are quite frequently made by citing the sulphides of immensely high grade ores yielded by this development and operating proposition, which is one of the most important in the camp.

Ore Values Very High. Veteran tunnel ore is of higher value than any other to be found in the bona fide Ely ore zones.

The ore from this property is in appearance a black mass, impregnated with iron. It crumbles in one's hand and then are exposed the peacock colors characteristic of the copper-bearing ores of Butte, Montana, mines.

THE NEVADA CONSOLIDATED MINE AT ELY



Steel Gallows Frames and Ore Bin, Star Pointer Mine of the Nevada Consolidated, November 1.

If there should be any doubt in the minds of the public as to the greatness of the Nevada Consolidated mines at Ely, a glance at some of the figures below should at once remove them.

The holdings of the company comprise some 700 acres of extremely valuable copper property, divided into two groups, the Ruth and Eureka, or Copper Flat groups.

year, and will produce \$9,817,200 pounds of refined copper. Now figuring copper at 14 cents a pound, and allowing 8 cents a pound for all the expenses incident to mining and smelting, the annual net earnings of this Ely company will be \$2,389,000, which will be equal to \$1.85 per share a year, or 18.5 per cent on the stock at \$10.

Another extremely valuable asset of the company is the Nevada Northern railway, of which the owner with the Cumberland-Ely company. This road connects with the Southern Pacific at Coburn and is 150 miles long.

Yampa Mines and Smelter

Two of Bingham's biggest institutions are the Tintic Mining & Development company and the Yampa Smelting company.

When General Manager C. W. Saxman came to the Yampa in February last, he at once set about making improvements in both mine and mill and the capacity of the smelter has been increased from 450 to 750 tons daily under his direction.

While important improvements have been made at the smelter, they have not been more than those made at the mine. There an electric haulage system has been installed and a big twenty-drill compressor is about to take the place of the five and seven-drill machines now in use.

Company's Holdings. The company's estate comprises some 180 acres near the head of Star Fork, adjoining the Utah Consolidated on the north and the Boston Consolidated property on the west.

Two tunnels and a shaft constitute the main workings, and the statement comes from a reliable source that the reserves are now much larger than ever before.

On the 1700-foot level the ore body was driven through on the strike of the vein for more than 800 feet. It is now probably open for 1000 feet or more.

What is considered one of the most complete mills in the United States is located on Utah Copper property in Bingham canyon.

Lenox Mining Co. Massosot Mining Co. Eddie Mining Co.

Mines Located at Bingham Canyon, Utah

A. H. McCARRICK, President. A. H. PAGE, Secretary and Treasurer.

STEPTOE HOTEL, Ely City, Nevada

The Only Strictly First-Class Hotel in Eastern Nevada. The Cafe is the handsomest and the best conducted in the State.